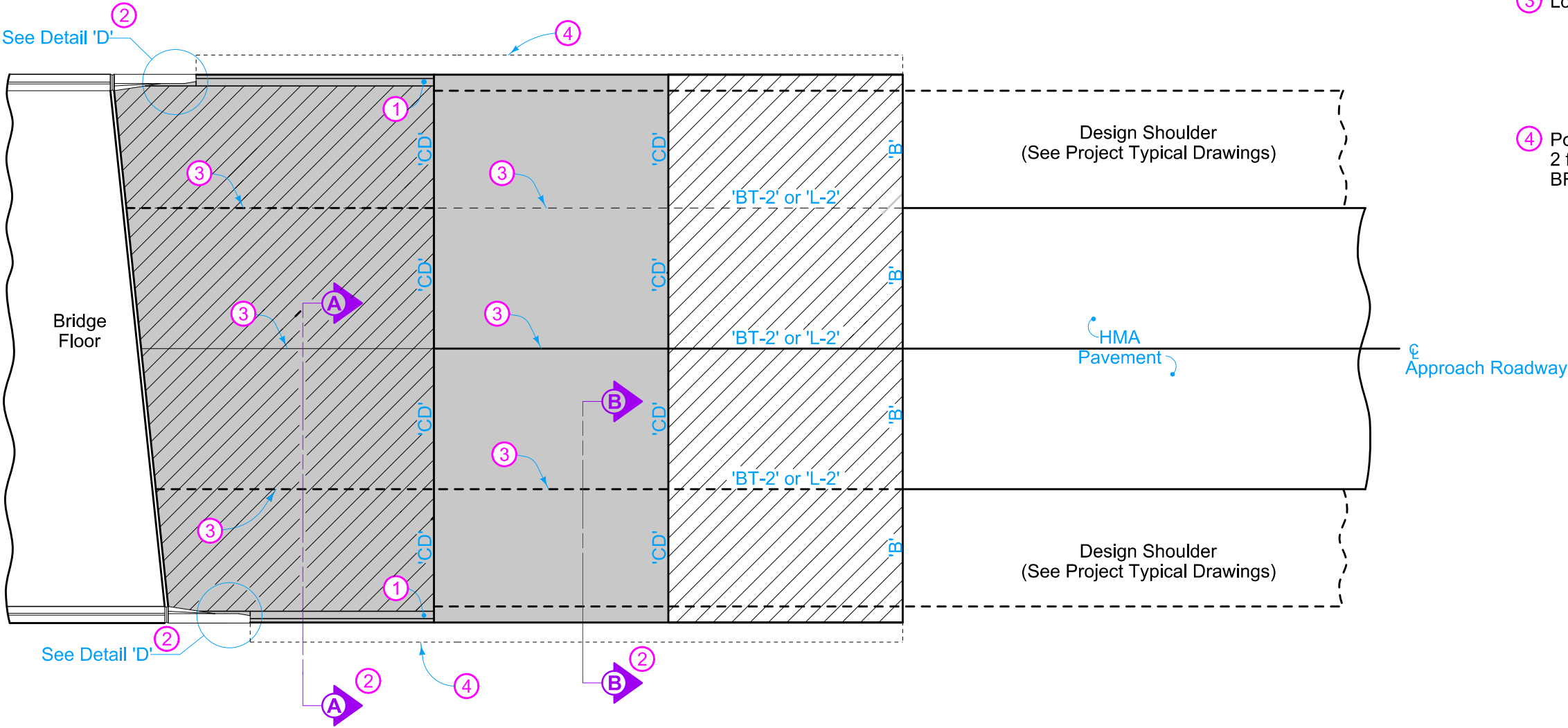


For joint details, see PV-101.

- ① Build 4 inch Sloped Curb to end of Double Reinforced Section. Refer to PV-102 for curb and runout details.
- ② See BR-201, BR-202, BR-203, or BR-204.
- ③ Longitudinal Joint (PV-101):  
Single Pour - Saw cut joint per Detail B .  
Two Pours - Use 'BT-2' joint.
- ④ Polymer Grid and excavation limits of Modified Subbase 2 feet outside of pavement edge. See BR-201, BR-202, BR-203, or BR-204.



PLAN VIEW

Pay limits for contract item include the following areas:

- Double Reinforced Section
- Single Reinforced Section
- Non-Reinforced Section

IOWA DOT	REVISION	
	4	10-21-25
STANDARD ROAD PLAN		
BR-212		
SHEET 1 of 1		

REVISIONS: Changed 'KT' joints to 'BT' joints.

*Shawn Miller*

APPROVED BY DESIGN METHODS ENGINEER

**BRIDGE APPROACH  
(ABUTTING HMA PAVEMENT)**