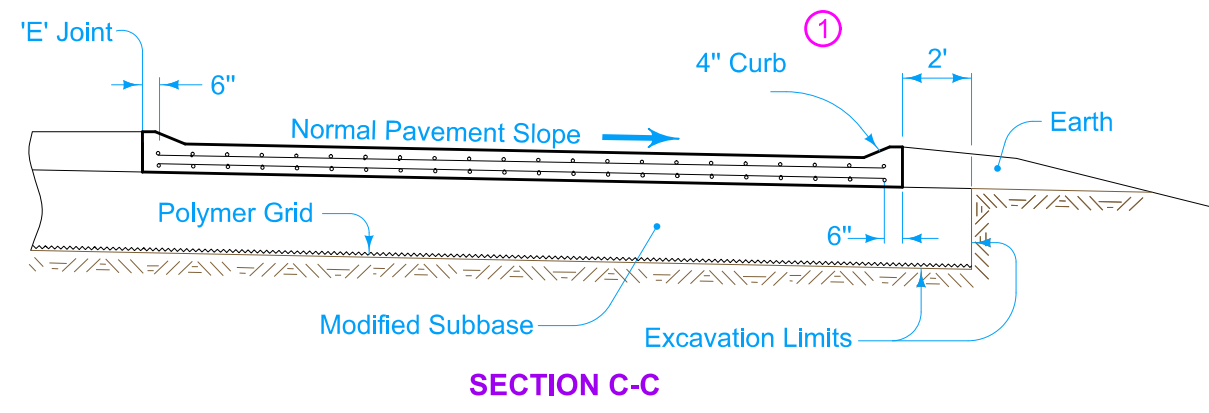
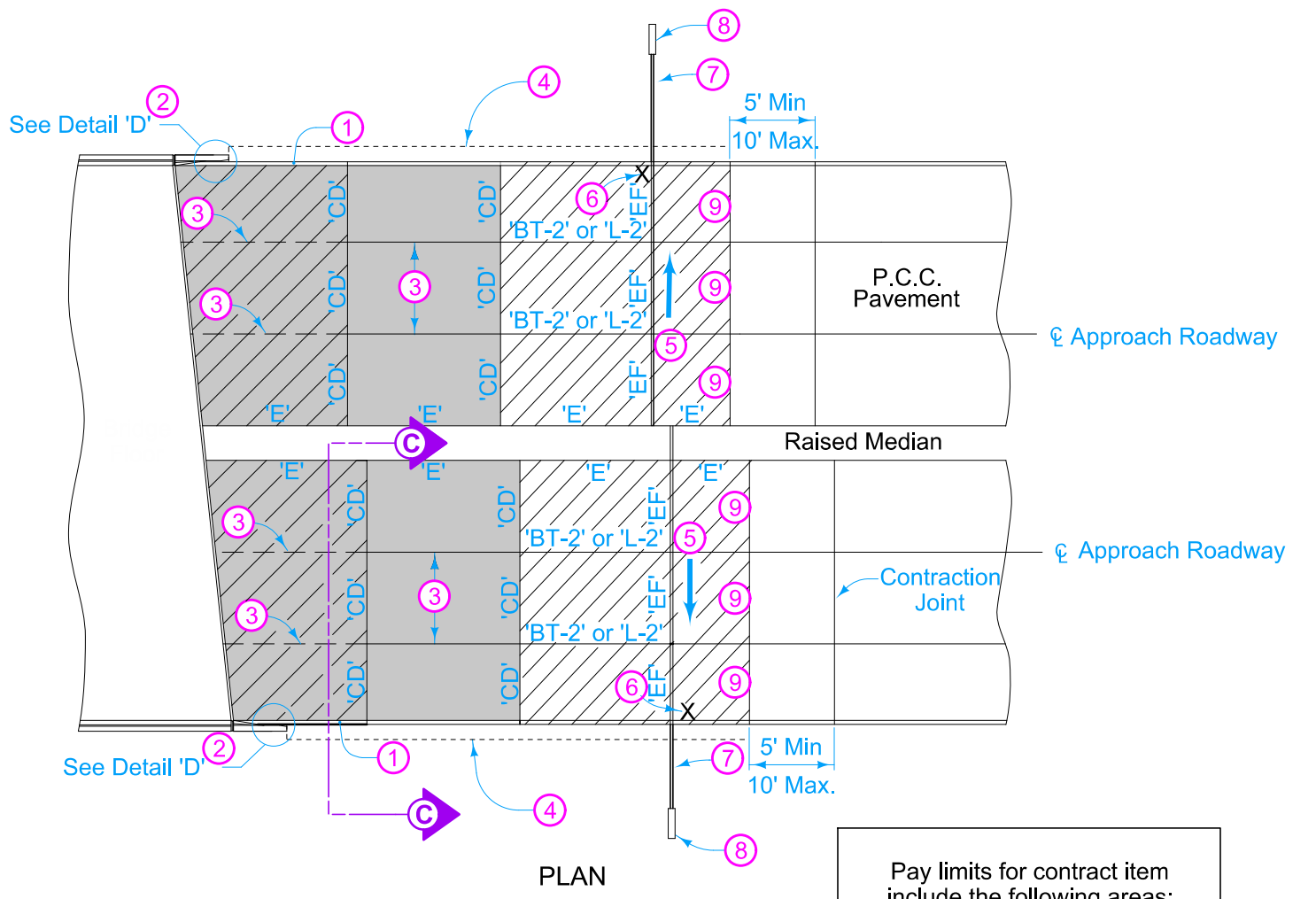
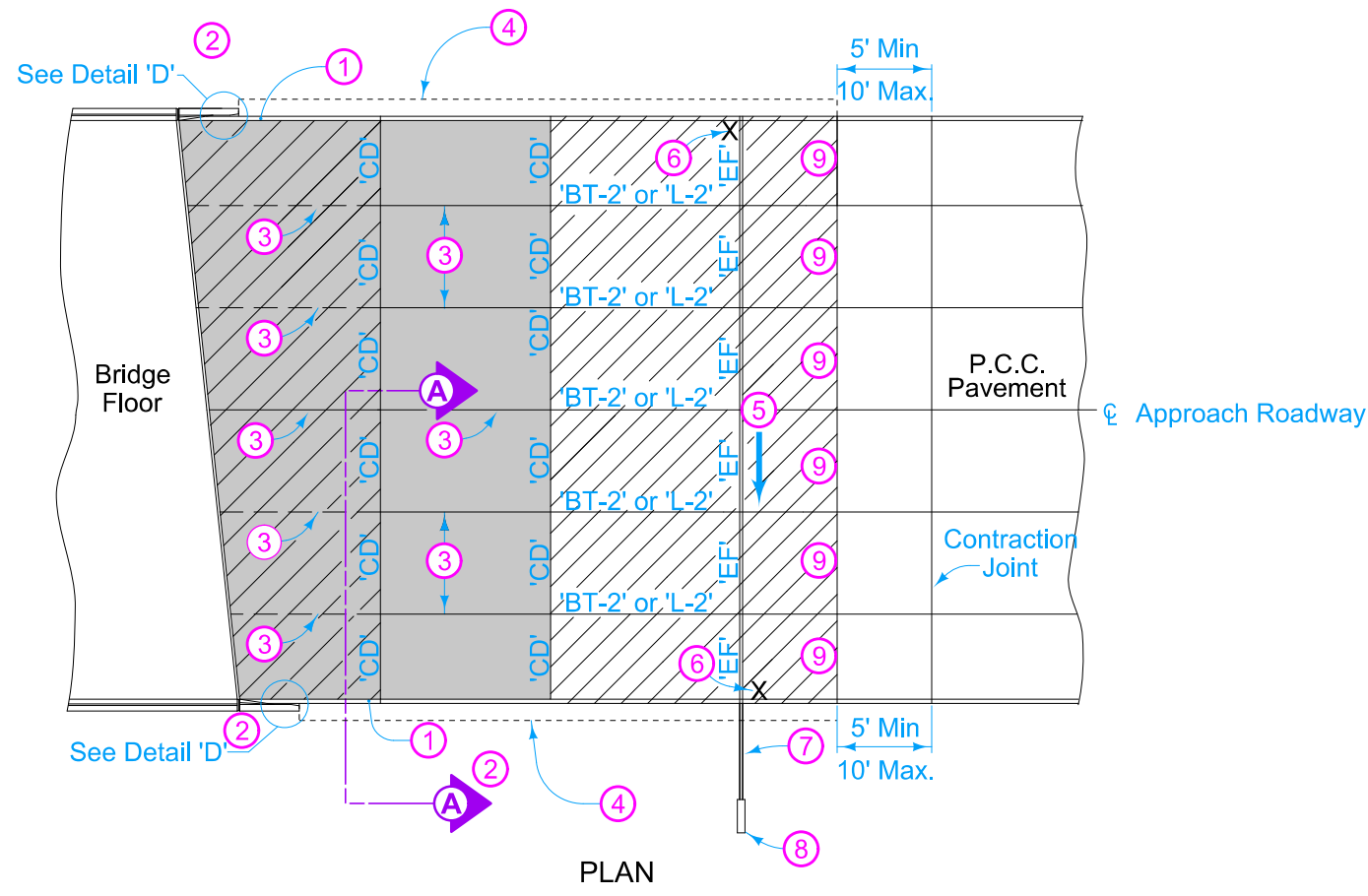


For joint details, see PV-101.



- ① Build 4 inch Curb, unless noted otherwise in the plans. Refer to PV-102 for curb and runout details.
- ② See BR-201, BR-202, BR-203, or BR-204.
- ③ Longitudinal Joint (PV-101):
Single Pour - Saw cut joint per Detail B.
Two Pours - Use 'BT-2' joint.
- ④ Polymer Grid and excavation limits of Modified Subbase 2 feet outside of pavement edge. See BR-201, BR-202, BR-203, or BR-204.
- ⑤ Slope subdrain to drain.
- ⑥ Place an "X" in the plastic concrete near the 'EF' joint at the outside edge of pavement.
- ⑦ 4 inch perforated subdrain (polyethylene, corrugated tubing).
- ⑧ See DR-303 or DR-306 for outlet details
- ⑨ 'DW' or 'RT' joint.

Pay limits for contract item include the following areas:

- Double Reinforced Section
- Single Reinforced Section
- Non-Reinforced Section

	REVISION
	4 04-21-26
STANDARD ROAD PLAN	BR-231
REVISIONS: Changed 'K' joints to 'BT' joints.	SHEET 1 of 1
APPROVED BY DESIGN METHODS ENGINEER	
BRIDGE APPROACH (MULTI-LANE, CURBED ROADWAY)	