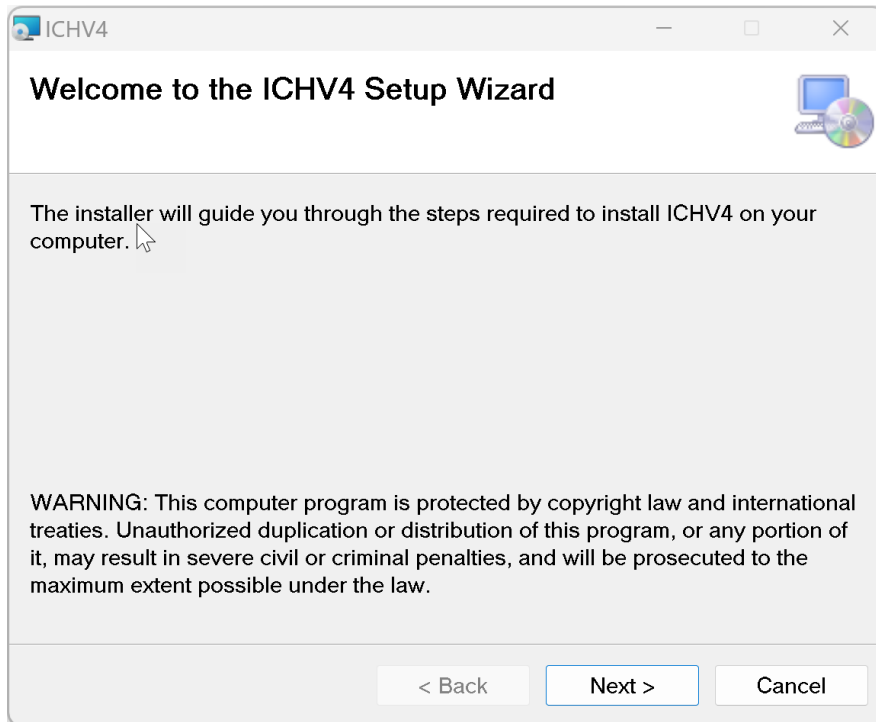
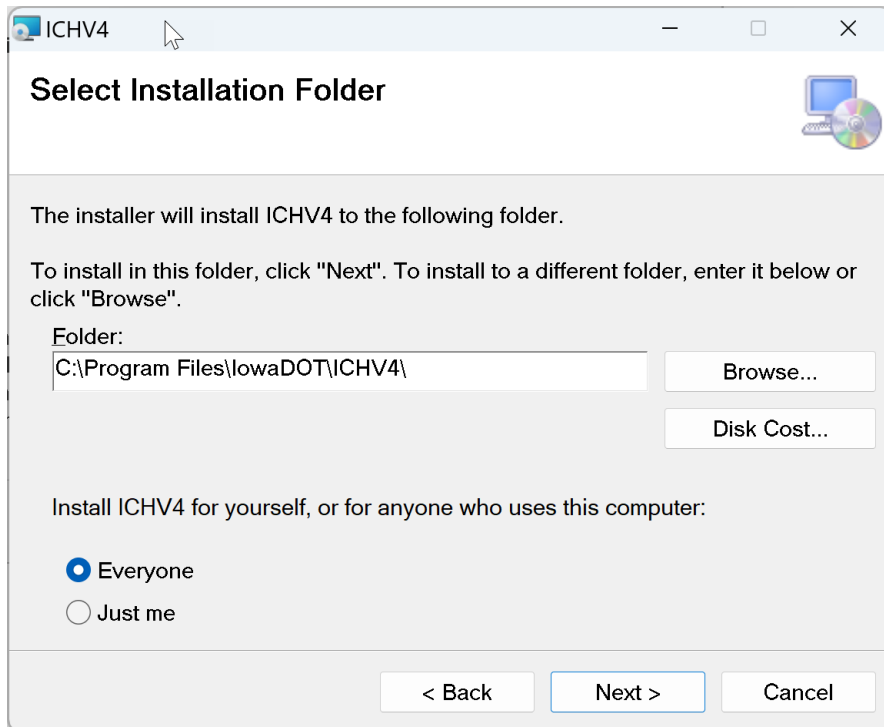


Iowa Culvert Hydraulics Installation

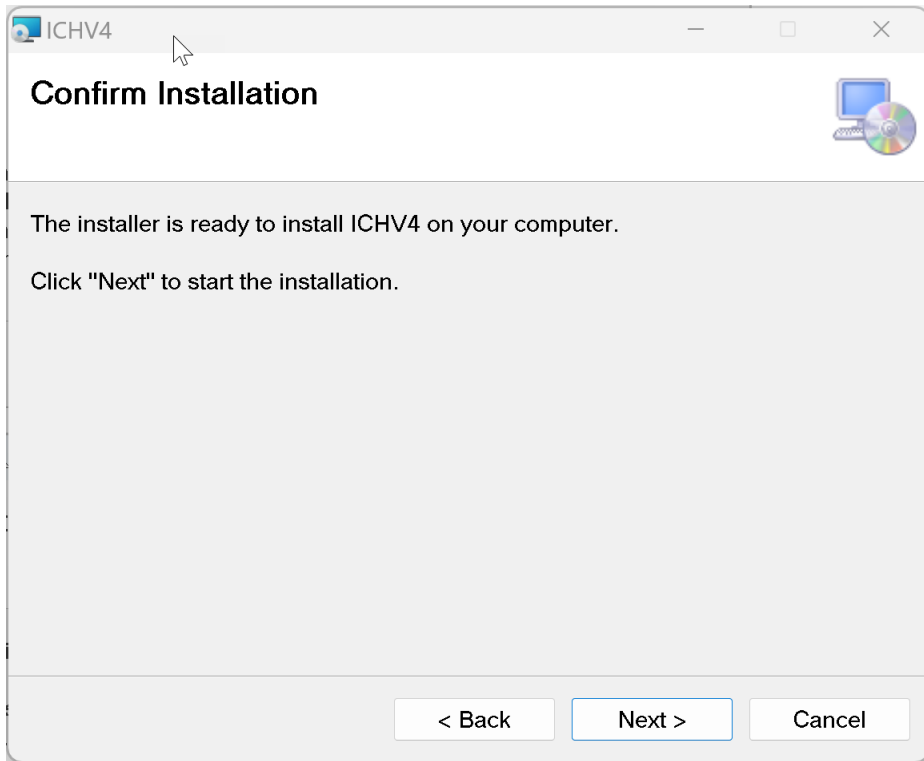


Click Next.

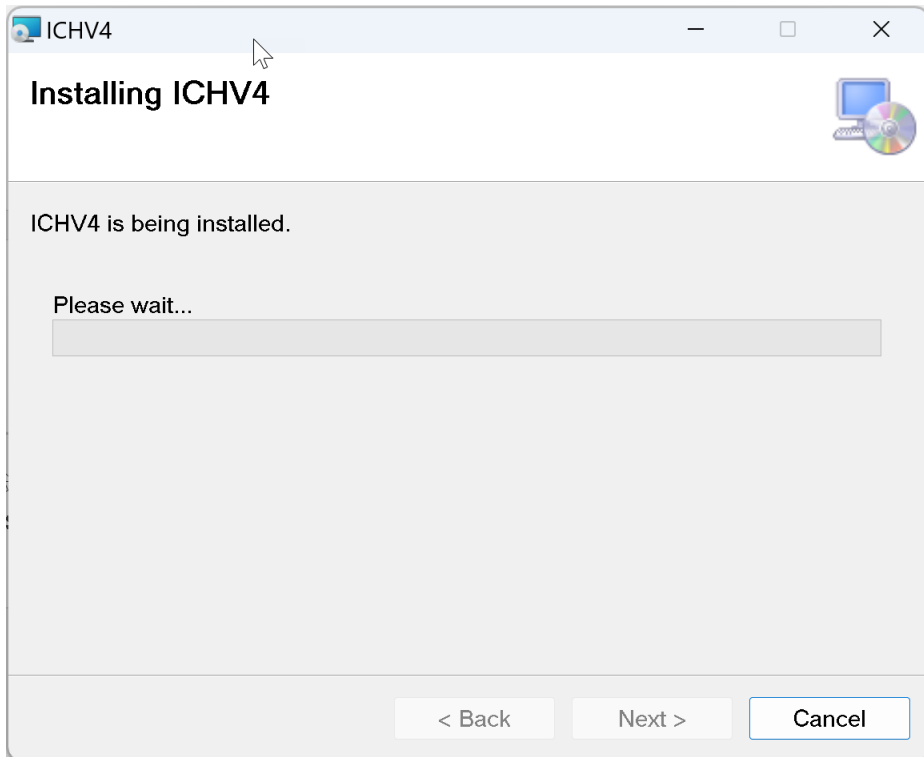


Select Everyone option for install.

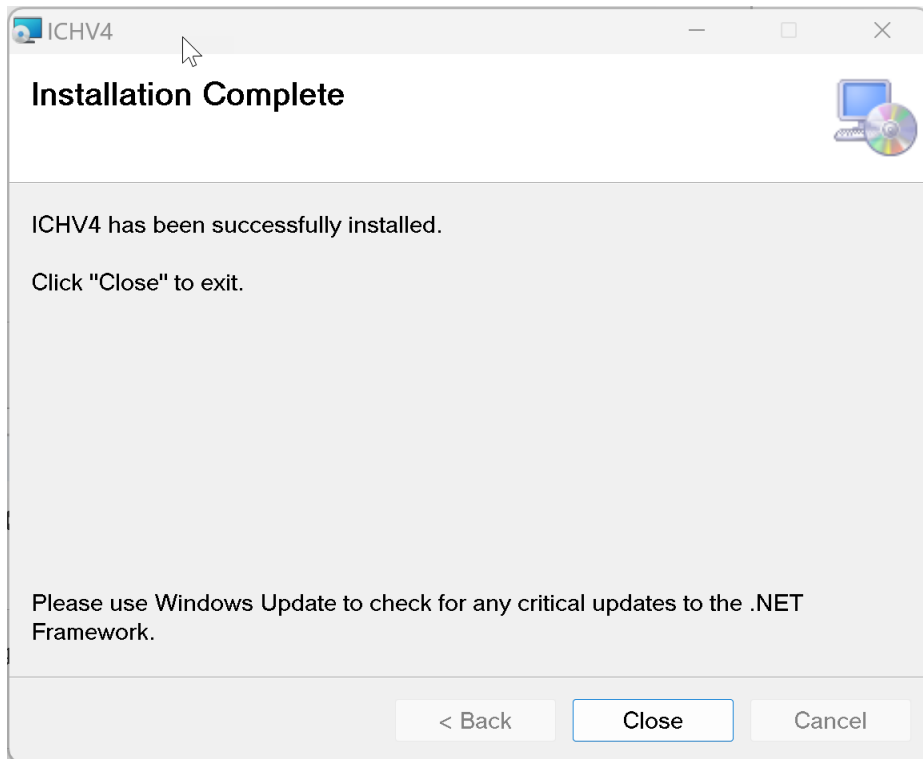
Click Next.



Click Next.



Progress screen will display.



Click Close.

The install creates an entry in the Start Menu named lowaDOT and the program is listed as ICHV4. A desktop shortcut with an ICH icon and name ICHV4 is also created.

The program uses the .NET Framework 4.8 and will install this if it is not already present.