

OFFICIAL DESCRIPTION CHANGE

OFFICE: Transportation Data

ENTERED BY: Stefani Wonders

ENTERED DATE: 09-07-2006

New Description – Interstate 35 and its extensions in Polk County described as follows:

West Des Moines:

Beginning on the Polk–Warren County line (south corporation line) at a point near the S $\frac{1}{4}$ Corner Section 31–T78N–R25W, Polk County (N $\frac{1}{4}$ Corner Section 6–T77N–R25W, Warren County) connecting with an unnamed street; thence curving in a northeasterly, northerly, northwesterly, and northerly direction on said unnamed street through Sections 31, 30, 19, 18, 7, and 6–T78N–R25W to the north corporation line (south corporation line of Clive) (approximately 2105 feet west of the NE Corner of said Section 6) connecting with an unnamed street.

Clive:

Beginning on an unnamed street at the south corporation line (north corporation line of West Des Moines); thence northerly on said unnamed street through Sections 32–T79N–R25W to the north corporation line (south corporation line of Urbandale) (a point approximately 679 feet west of the NE Corner of said Section 32) connecting with an unnamed street.

Urbandale:

Beginning on an unnamed street at the south corporation line (north corporation line of Clive); thence northerly on said unnamed street through Sections 29, and 20–T79N–R25W to a point approximately 653 feet west of the NE Corner of said Section 20; thence northeasterly and easterly through Sections 17 and 16–T79N–R25W to a point near the Center of said Section 16;

thence easterly through Sections 16, 15, 14, and 13-T79N-R25W to the east corporation line (a point near the Center of said Section 13).

Beginning again on the east corporation line connecting with an unnamed street; thence easterly through Sections 18, 17, 16, 15, 14, and 13-T79N-R24W; thence northeasterly through Section 18-T79N-R23W to the junction of Interstate 80 and Interstate 235 (approximately 2026 feet east and 2283 feet south of the NW Corner of said Section 18); thence northerly, northwesterly, and northeasterly through Sections 18 and 7-T79N-R23W to the south corporation line of Ankeny (approximately 1258 feet east of the NW Corner of said Section 7) connecting with an unnamed street.

Ankeny:

Beginning on an unnamed street at the south corporation line; thence northeasterly, northerly, and northeasterly on said unnamed street through Section 6-T79N-R23W and Sections 31, 30, 19, and 18-T80N-R23W to the north corporation line (approximately 1968 feet east of the NW Corner of said Section 18).

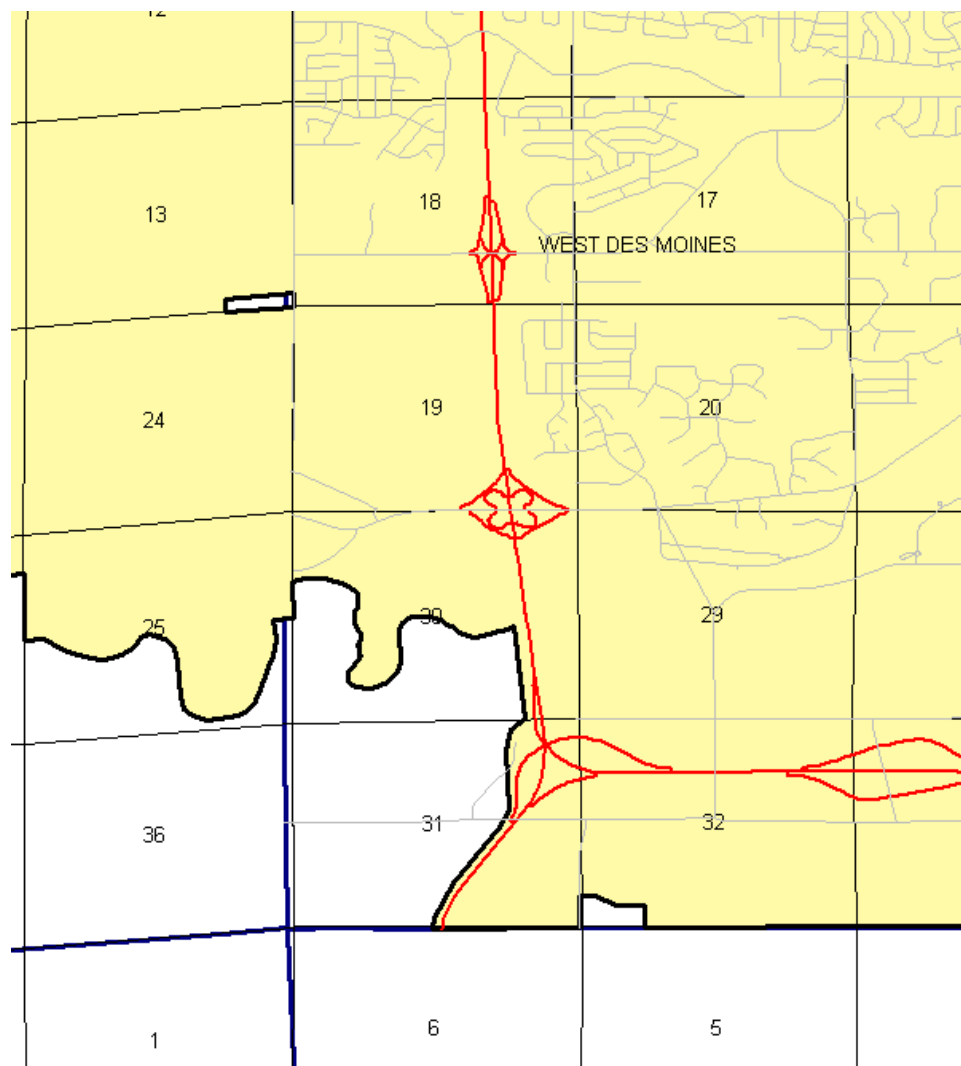
Beginning again on the north corporation line of Ankeny connecting with an unnamed street; thence northeasterly through Section 7-T80N-R23W to the south corporation line of Ankeny (approximately 1296 feet north and 2567 feet east of the SW Corner of said Section 7) connecting with an unnamed street.

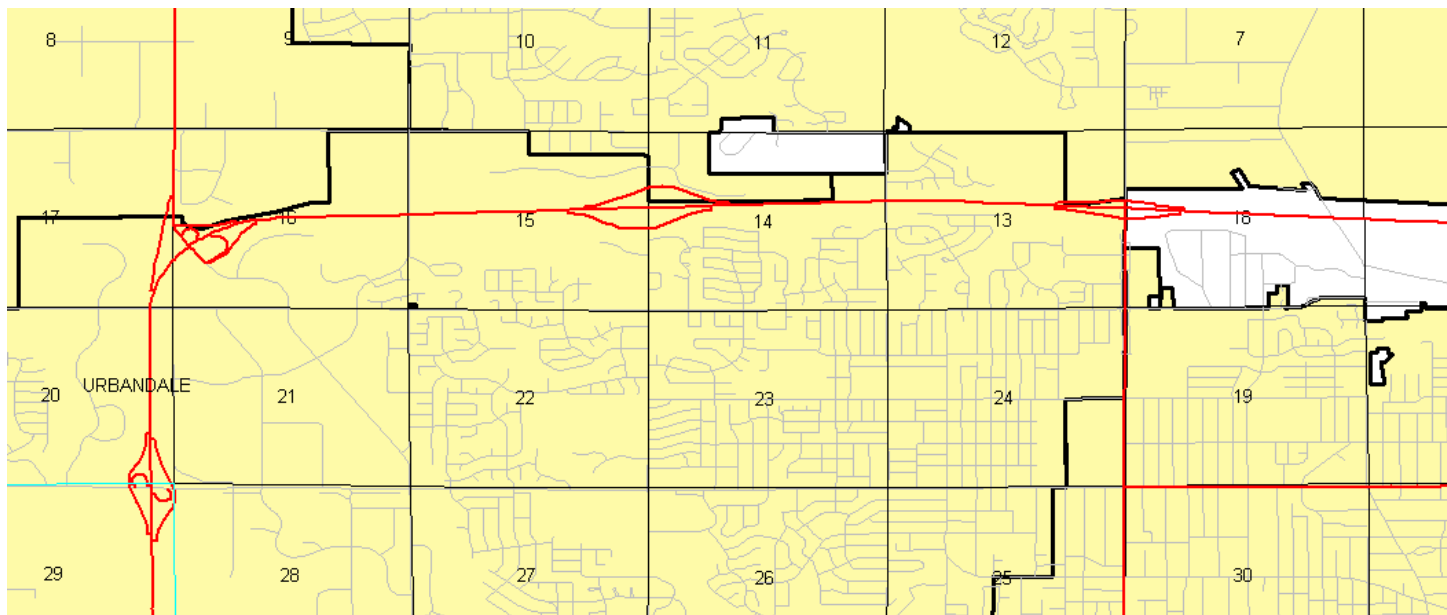
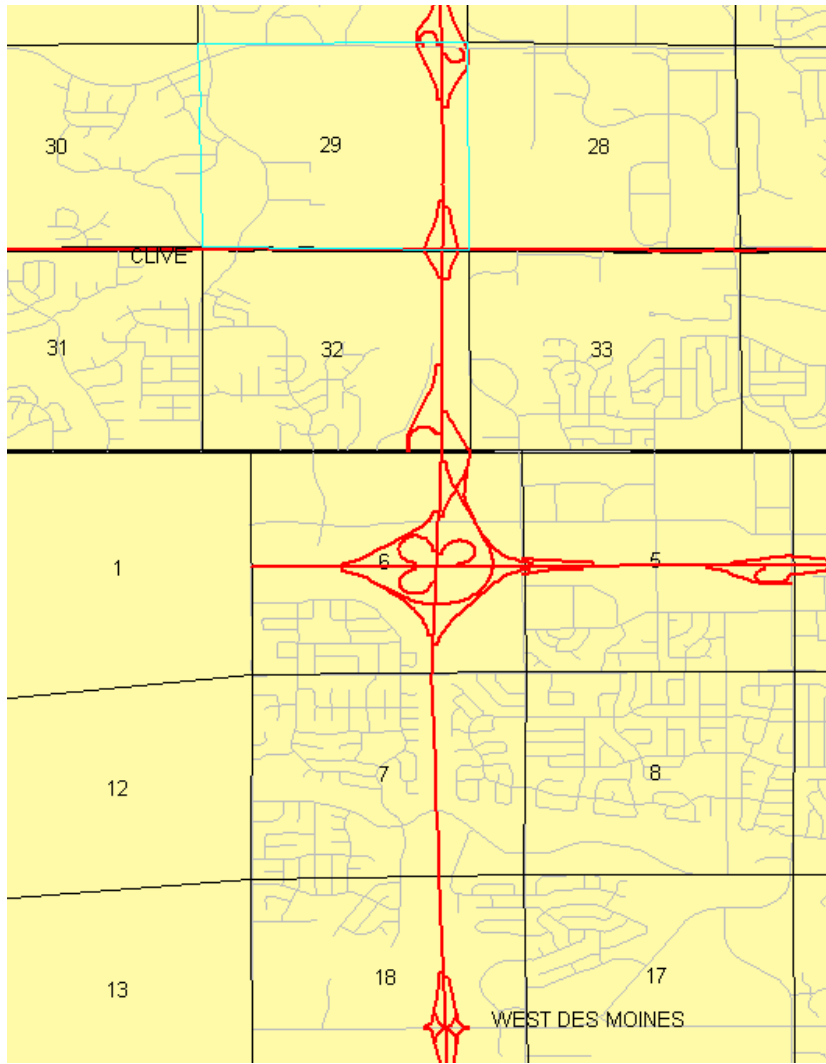
Ankeny:

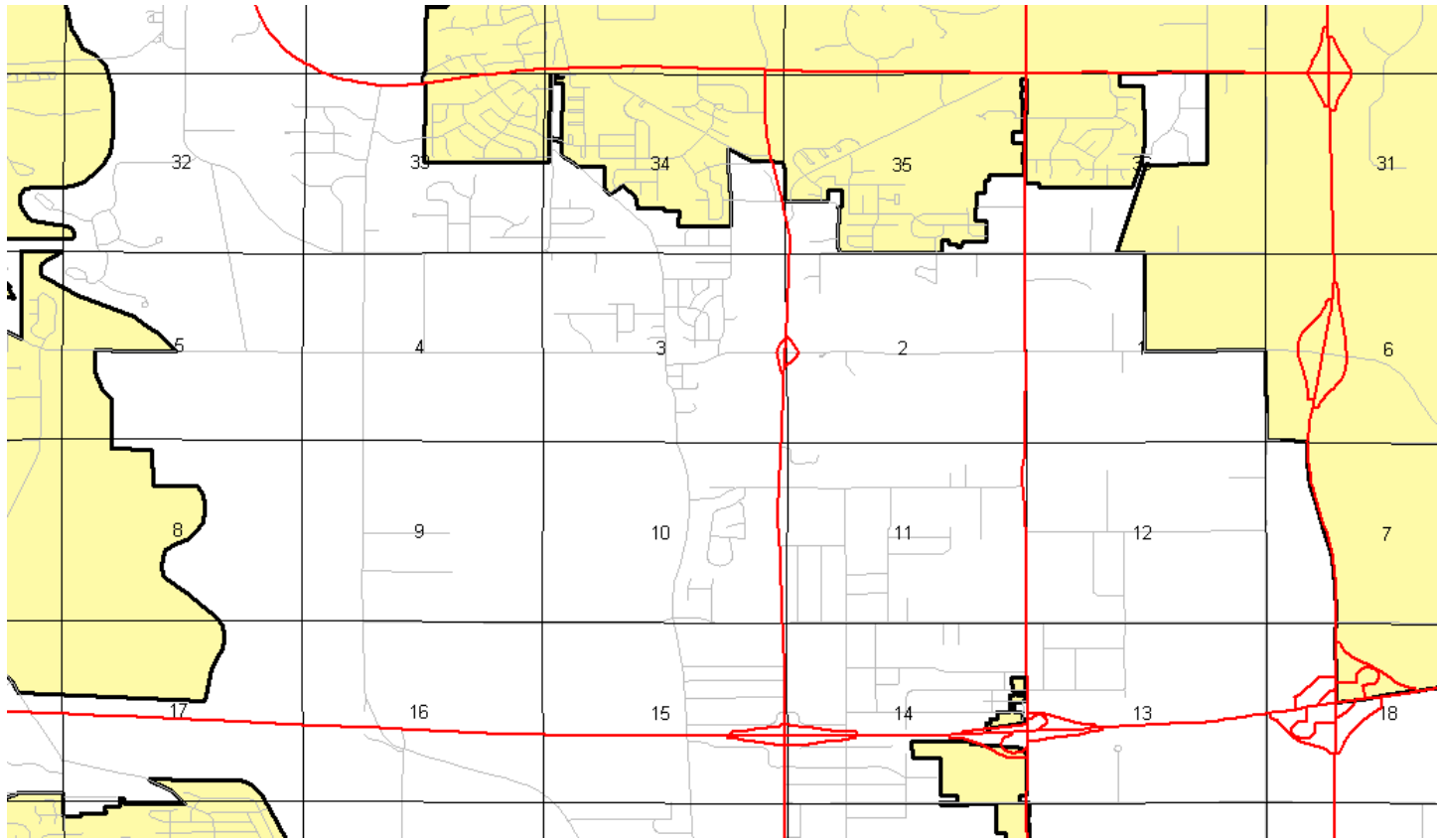
Beginning on an unnamed street at the south corporation line; thence northeasterly on said unnamed street through Section 7-T80N-R23W to the north corporation line (approximately 1300 feet south and 3819 feet east of the NW Corner of said Section 7).

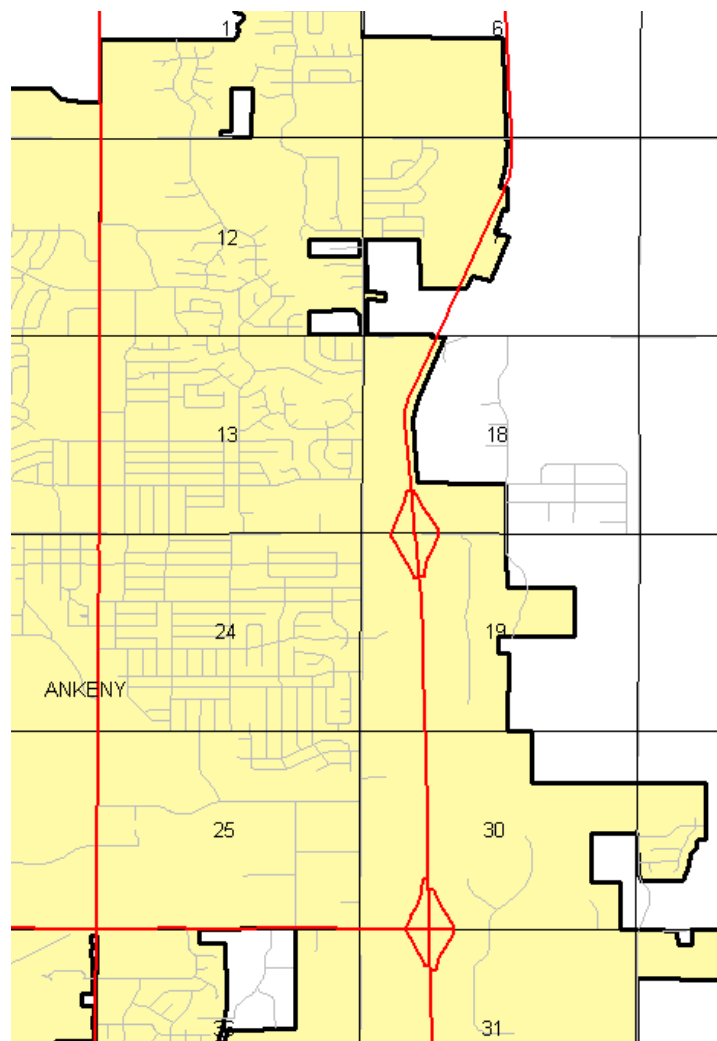
Beginning again on the north corporation line of Ankeny connecting with an unnamed street; thence northerly through Sections 7 and 6-T80N-R23W and Sections 31, 30, 19, 18, 7, and 6-T81N-R23W to the Polk-Story County line to

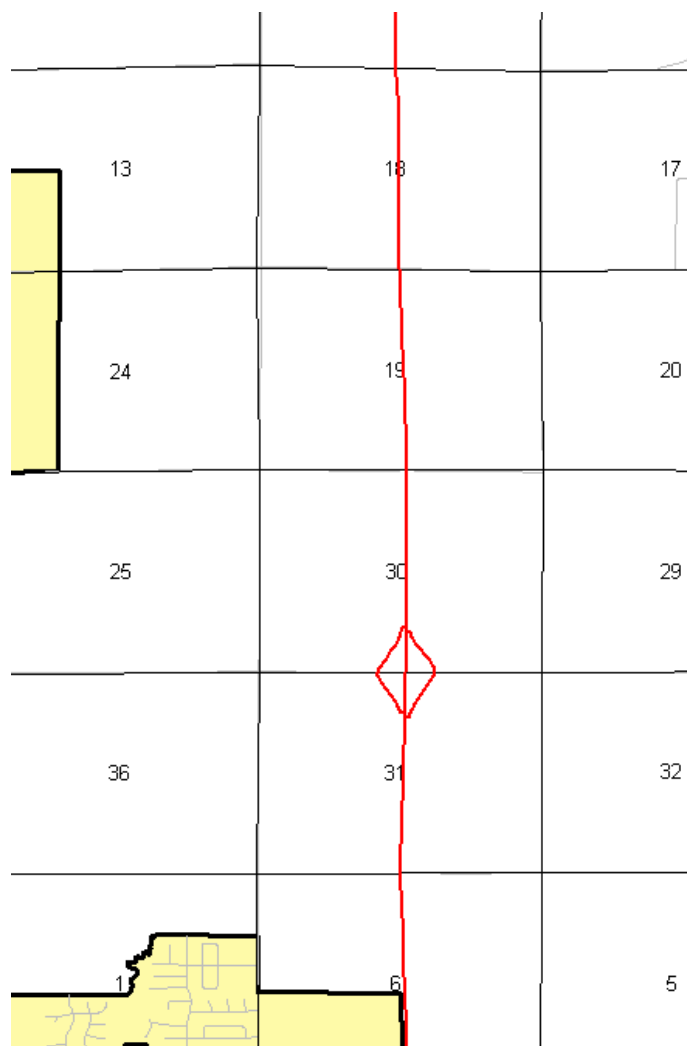
a point near the N $\frac{1}{4}$ Corner of said Section 6, Polk County (S $\frac{1}{4}$ Corner Section 31-T82N-R23W, Story County).

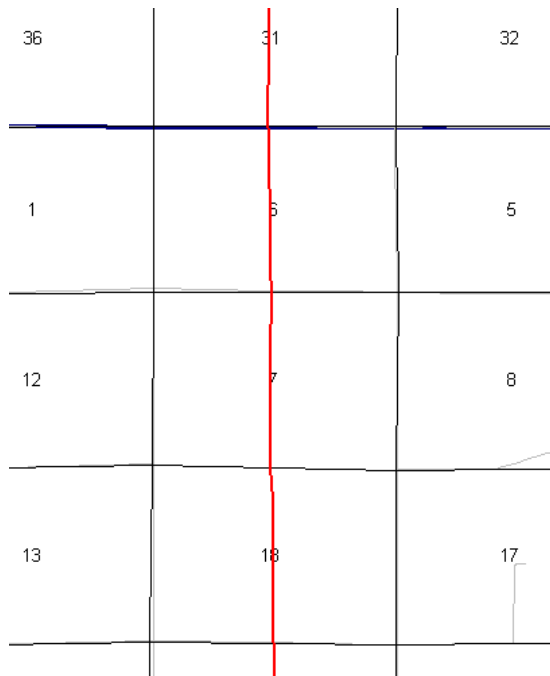












OFFICIAL DESCRIPTION CHANGE

COUNTY: Polk

ROUTE: Interstate 35

STAFF ACTION NUMBER: 5-87-1518

APPROVAL DATE: 5-13-87

New Description - Interstate 35 and its extensions in Polk County described as follows:

Beginning on the Polk-Warren County line at a point near the S $\frac{1}{4}$ Corner Section 31-T78N-R25W, Polk County (N $\frac{1}{4}$ Corner Section 6-T77N-R25W, Warren County); thence curving in a northeasterly direction through Section 31-T78N-R25W to a point approximately $\frac{1}{2}$ mile south and 0.3 mile west of the NE Corner Section 31-T78N-R25W; thence curving in a northerly direction through Sections 31 (junction Iowa 5) and Section 30-T78N-R25W to the south corporation line of West Des Moines, connecting with an unnamed street.

West Des Moines:

Beginning on an unnamed street at the south corporation line; thence north on said unnamed street through Sections 30, 19, 18, 7 and 6-T78N-R25W to the north corporation line connecting with an unnamed street.

Beginning again on the north corporation line of West Des Moines connecting with an unnamed street; thence north through Section 32-T79N-R25W to the south corporation line of Urbandale connecting with an unnamed street.

Urbandale:

Beginning on an unnamed street at the south corporation line; thence north on said unnamed street through Sections 29 and 20-T79N-R25W to the north corporation line connecting with an unnamed street.

Beginning again at the north corporation line of Urbandale connecting with an unnamed street; thence curving in a northeasterly direction through the SE $\frac{1}{4}$ of Section 17-T79N-R25W and the SW $\frac{1}{4}$ of Section 16-T79N-R25W to a point (junction Iowa 141) in the SW $\frac{1}{4}$ of said Section 16; thence curving in a northeasterly and easterly direction through Sections 16, 15 and 14-T79N-R25W to the west corporation line of Urbandale connecting with an unnamed street.

Urbandale:

Beginning again on an unnamed street at the west corporation line; thence east on said unnamed street through Sections 14 and 13-T79N-R25W to the east corporation line (west corporation line of Johnston) connecting with an unnamed street.

Johnston:

Beginning on the west corporation line (east corporation line of Urbandale) connecting with an unnamed street; thence east through Section 18-T79N-R24W to the east corporation line connecting with an unnamed street.

Beginning again at the east corporation line of Johnston connecting with an unnamed street; thence east through Sections 18, 17, 16 and 15-T79N-R24W to a point (junction Iowa 415) approximately 1,950 feet north of the SE Corner Section 14-T79N-R24W; thence in a generally easterly direction through Section 14-T79N-R24W to a point (junction US 69) approximately 1,850 feet north of the SE Corner Section 14-T79N-R24W then in a generally easterly direction through Section 13-T79N-R24W and Section 18-T79N-R23W to a point (junction Interstate 80 and 235) approximately ¼ mile east of the W ¼ Corner Section 18-T79N-R23W; thence northerly through Sections 18, 7 and 6-T79N-R23W and Section 31-T80N-R23W to the south corporation line of Ankeny, connecting with an unnamed street.

Ankeny:

Beginning on an unnamed street at the south corporation line; thence north on said unnamed street through Sections 31, 30, 19 and 18-T80N-R23W to the north corporation line, connecting with an unnamed street.

Beginning again on the north corporation line of Ankeny connecting with an unnamed street; thence north, northeast and north through Sections 7 and 6-T80N-R23W and Section 31-T81N-R23W to a point approximately 2,900 feet east of the NW Corner Section 31-T81N-R23W; thence north through the center part of Sections 30, 19, 18, 7 and 6-T81N-R23W to the Polk-Story County line on the north line of Section 6-T81N-R23W, Polk County (Section 31-T82N-R23W, Story County).

COMMISSION ORDER

DIVISION: Planning & Research

COMMISSION ORDER NUMBER: PR-79-272

SUBMITTED BY: C.I. MacGillivray

MEETING DATE: 11-7-78

DISCUSSION/BACKGROUND:

Due to a review of our Primary Interstate System Records Interstate 35 in Polk County should be deleted and the new description added should be officially included into the Primary Interstate System.

Interstate 35 begins on the Polk-Warren County line approximately ½ mile east of the SE Corner of Polk County and travels northerly, easterly and northerly via West Des Moines, Urbandale, Johnston, and Ankeny to the Polk-Story County line approximately 6 miles east of Sheldahl, Iowa.

PROPOSAL/ACTION RECOMMENDATION:

Locate Interstate 35 and its extensions in Polk County as follows:

Beginning on the Polk-Warren County line at a point near the S ¼ Corner Section 31-T78N-R25W, Polk County (N ¼ Corner Section 6-T77N-R25W, Warren County); thence curving in a northeasterly direction through Section 31-T78N-R25W to a point approximately ½ mile south and 0.3 mile west of the NE Corner Section 31-T78N-R25W; thence curving in a northerly direction through Sections 31 (junction Iowa 5) and Section 30-T78N-R25W to the south corporation line of the City of West Des Moines connecting with an unnamed street.

West Des Moines:

Commencing on an unnamed street at the south corporation line; thence northerly on said unnamed street through Sections 30, 19, 18, 7, and

6-T78N-R25W to the north corporation line connecting with an unnamed street.

Beginning again on the north corporation line of the City of West Des Moines and connecting with an unnamed street; thence in a northerly direction through Section 32-T78N-R25W to the south corporation line of the City of Urbandale connecting with an unnamed street.

Urbandale:

Connecting with an unnamed street at the south corporation line; thence north-easterly on said unnamed street through Sections 29 and 20-T79N-R25W to the north corporation line connecting with an unnamed street.

Beginning again at the north corporation line of the City of Urbandale connecting with an unnamed street; thence curving in a northeasterly direction through the SE $\frac{1}{2}$ of Section 17-T79N-R25W and the SW $\frac{1}{4}$ of Section 16-T79N-R25W to a point (junction Iowa 141) in the SW $\frac{1}{4}$ of said Section 16; thence curving in a northeasterly and easterly direction through Sections 16, 15, and 14-T79N-R25W to the westerly corporation line of the City of Urbandale connecting with an unnamed street.

Urbandale:

Commencing again on an unnamed street at the westerly corporation line; thence easterly on said unnamed street through Sections 14 and 13-T79N-R25W to the east corporation line (west corporation line of the City of Johnston connecting with an unnamed street.

Johnston:

Beginning on the west corporation line (east corporation line of the City of Urbandale connecting with an unnamed street; thence easterly through Section 18-T79N-R24W to the east corporation line connecting with an unnamed street.

Beginning again at the east corporation line of the City of Johnston connecting with an unnamed street; thence easterly through Sections 18, 17, 16, and 15-T79N-R24W to a point (junction Iowa 415) approximately 1950 feet north of the SE Corner Section 14-T79N-R24W; thence in a generally easterly direction through Section 14-T79N-R24W to a point (junction US 69) approximately 1850 feet north of the SE Corner Section 14-T79N-R24W; thence in a generally easterly direction through Section 13-T79N-R24W and Section 18-T79N-R23W to a point (junction Interstate 30 and 235) approximately ¼ mile east of the W ¼ Corner Section 18-T79N-R23W; thence northerly through Sections 18, 7, and 6-T79N-R23W and Section 31-T80N-R23W to the south corporation line of the City of Ankeny, connecting with an unnamed street.

Ankeny:

Commencing on an unnamed street at the south corporation line; thence northerly on said unnamed street through Sections 31, 30, 19, and 18-T80N-R23W to the north corporation line, connecting with an unnamed street.

Beginning again on the north corporation line of the City of Ankeny connecting with an unnamed street; thence northerly, northeasterly, and northerly through Sections 7 and 6-T80N-R23W and Section 31-T81N-R23W to a point (junction Iowa 87) approximately 2900 feet east of the NW Corner Section 31-T81N-R23W; thence northerly through the center part of Sections 30, 19, 18, 7, and 6-T81N-R23W to the Polk-Story County line on the north line of Section 6-T81N-R23W, Polk County (Section 31-T82N-R23W, Story County).

NOW, THEREFORE: Be it resolved that the Iowa Department of Transportation approve the location of Interstate 35 in Polk County, Iowa.

NOTE: To become effective upon the adoption of this resolution.

REVISED: 5-13-87

COMMISSION ORDER

DIVISION: Planning & Research

SUBMITTED BY: Raymond L. Kassel

MEETING DATE: 3-9-76

DISCUSSION/BACKGROUND:

Due to a review of our Primary Interstate Highway System records, Interstate 35 in Urbandale, Polk County, should be deleted from the Primary Interstate Road Extension, and the new description added should be officially included into the Primary Interstate Road Extension.

PROPOSAL/ACTION RECOMMENDATION:

Locate Interstate 35 in Urbandale, Polk County as follows:

Commencing on an unnamed street at the south corporation line; thence north-easterly on said unnamed street through Sections 29 and 20-T79N-R25W to the north corporation line.

Commencing again on an unnamed street at the west corporation line; thence easterly on said unnamed street through Sections 14 and 13-T79N-R25W to the east corporation line.

NOW, THEREFORE: Be it resolved that the Iowa Department of Transportation approve the revision of Interstate Road Extension 35, Urbandale, Polk County, Iowa.

NOTE: To become effective upon adoption of this resolution.

COMMISSION RESOLUTION

DIVISION: Planning & Research

COMMISSION ORDER NUMBER: 74-501

MEETING DATE: 5-1-74

Locate Interstate 35 and its extensions in Polk County as follows:

Beginning on the Polk–Warren County line at a point near the S $\frac{1}{4}$ Corner Section 31–T78N–R25W, Polk County (N $\frac{1}{4}$ Corner Section 6–T77N–R25W, Warren County); thence curving in a northeasterly direction to a point–approximately $\frac{1}{2}$ mile south and 0.3 mile west of the NE Corner Section 31–T78N–R25W; thence curving in a northerly direction to a point approximately 670 feet south, and 990 feet west of the NE Corner Section 31–T78N–R25W; thence in a northerly direction to the south corporation line of the City of West Des Moines, connecting with an unnamed street.

Beginning again on the north corporation line of the City of West Des Moines connecting with an unnamed street; thence in a northerly direction through Section 32 to the south corporation line of the City of Urbandale.

Urbandale:

Commencing on an unnamed street at the south corporation line; thence northerly on said unnamed street through Sections 14 and 13–T79N–R25W to the north corporation line.

Beginning again at the north corporation line of the City of Urbandale connecting with an unnamed street; thence curving in a northeasterly and easterly direction through the SE $\frac{1}{4}$ of Section 17–T79N–R25W and the SW $\frac{1}{4}$ of Section 16–T79N–R25W to a point near the center of Section 16–T79N–R25W thence in an easterly direction through Sections 16–15 and 14 to the westerly corporation line of Urbandale connecting with an unnamed street.

Urbandale:

Commencing again on an unnamed street at the west corporation line; thence east on said unnamed street through Sections 14 and 13–T79N–R25W to the east corporation line.

Beginning again at the east corporation line of Urbandale connecting with an unnamed street thence easterly through Sections 18, 17, 16, 15, 14 and 13–T79N–R24W and Section 18–T79N–R23W to a point approximately $\frac{1}{4}$ mile east

of the W ¼ Corner Section 18-T79N-R23W; thence northerly through Sections 18, 7 and 6-T79N-R23W and Section 31-T80N-R23W to the south corporation line of the Town of Ankeny, connecting with an unnamed street.

Beginning again on the north corporation line of the Town of Ankeny connecting with an unnamed street; thence northerly, northeasterly and northerly through Sections 7 and 6-T80N-R23W and Section 31-T81N-R23W to a point approximately 24 feet west of the N ¼ Corner Section 31-T81N-R23W, thence northerly following substantially the quarter section line through Sections 30, 19, 18, 7 and 6-T81N-R23W to the Polk-Story County line at a point approximately 98 feet west of the N ¼ Corner Section 6-T81N-R23W, Polk County (S ¼ Corner Section 31-T82N-R23W, Story County).

NOW THEREFORE: Be it resolved that the Iowa State Highway Commission approve the location of Interstate 35 and its extensions in Polk County, Iowa.

NOTE: To become effective upon the adoption of this resolution.

OFFICIAL DESCRIPTION CHANGE

COUNTY: Polk

ROUTE: Interstate 35

APPROVAL DATE: 11-28-62

Beginning on the Polk-Warren County line at a point near the S $\frac{1}{4}$ Corner Section 31-T78N-R25W, Polk County (N $\frac{1}{4}$ Corner Section 6-T77N-R25W, Warren County); thence curving in a northeasterly direction to a point approximately $\frac{1}{2}$ mile south and 0.3 mile west of the NE Corner Section 31-T78N-R25W; thence curving in a northerly direction to a point approximately 670 feet south, and 990 feet west of the NE Corner Section 31-T78N-R25W; thence in a northerly direction to the south corporation line of the City of West Des Moines, connecting with an unnamed street.

Beginning again on the north corporation line of the City of West Des Moines connecting with an unnamed street; thence north through Section 32-T79N-R25W to the south corporation line of Urbandale.

Beginning on the north corporation line of Urbandale; thence in a northerly direction through Sections 29 and 20-T79N-R25W to a point approximately 560 feet west of the SE Corner Section 17-T79N-R25W; thence curving in a northeasterly and easterly direction through the SE $\frac{1}{4}$ of Section 17-T79N-R25W and the SW $\frac{1}{4}$ of Section 16-T79N-R25W to a point near the center of Section 16-T79N-R25W; thence in an easterly direction through Sections 16, 15, and 14-T79N-R25W to the west corporation line of Urbandale connecting with an unnamed street.

Beginning on the east corporation line connecting with an unnamed street; thence easterly through Sections 18, 17, 16, 15, 14 and 13-T79N-R24W and Section 18-T79N-R23W to a point approximately $\frac{1}{4}$ mile east of the W $\frac{1}{4}$ Corner Section 18-T79N-R23W; thence northerly through Sections 18, 7 and 6-T79N-

R23W and Section 31–T80N–R23W to the south corporation line of the Town of Ankeny, connecting with an unnamed street.

Ankeny:

Commencing on an unnamed street at the south corporation line; thence northerly on said unnamed street through Sections 31, 30, 19 and 18–T80N–R23W to the north corporation line.

Beginning again on the north corporation line of the Town of Ankeny connecting with an unnamed street; thence northerly, northeasterly and northerly through Sections 7 and 6–T80N–R23W and Section 31–T81N–R23W to a point approximately 24 feet west of the N $\frac{1}{4}$ Corner Section 31–T81N–R23W; thence northerly following substantially the quarter section line through Sections 30, 19, 18, 7 and 6–T81N–R23W to the Polk–Story County line at a point approximately 98 feet west of the N $\frac{1}{4}$ Corner Section 6–T81N–R23W, Polk County (S $\frac{1}{4}$ Corner Section 31–T82N–R23W, Story County).

OFFICIAL DESCRIPTION CHANGE

COUNTY: Polk

CITY OF: West Des Moines

ROUTE: Interstate 35

APPROVAL DATE: 10-15-57

Commencing on an unnamed street at the south corporation line; thence northerly on said unnamed street through Sections 30, 19, 18, 7 and 6-T78N-R25W to the north corporation line.