

COMMISSION ORDER**DIVISION:** Planning & Research**COMMISSION ORDER NUMBER:** PR-79-272**SUBMITTED BY:** C. I. MacGillivray**MEETING DATE:** 11-2-78**DISCUSSION/BACKGROUND:**

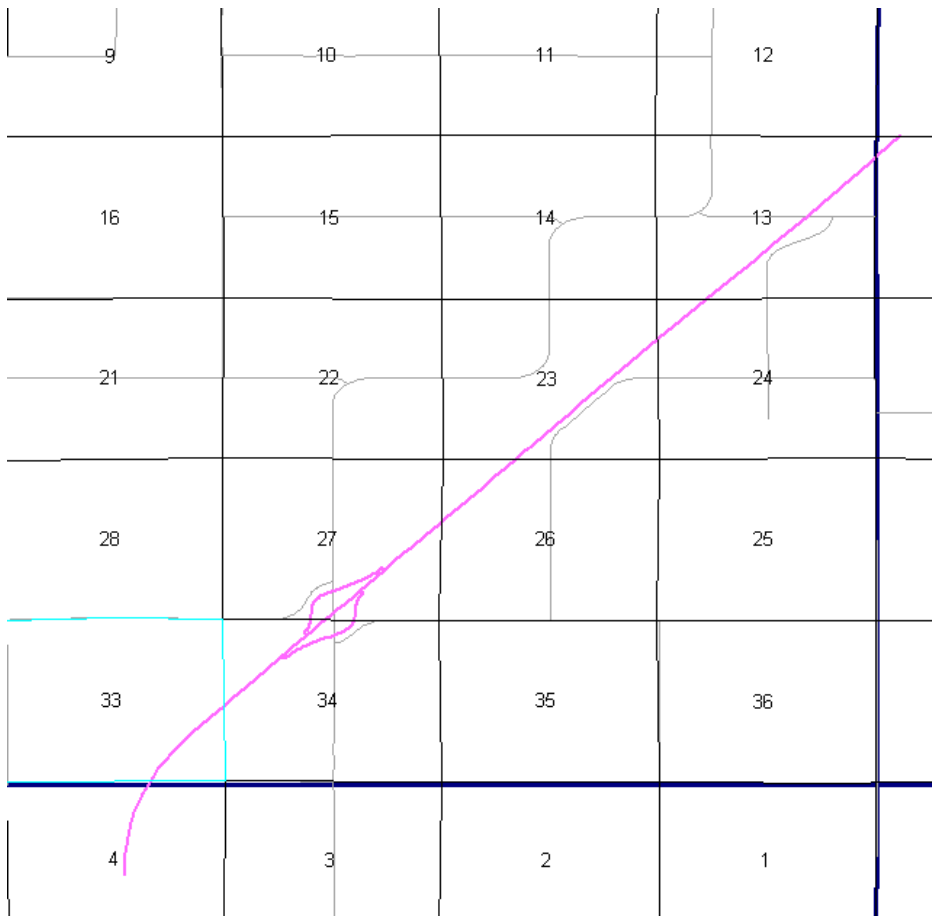
Interstate 35 located in Wright County should be officially included into the Primary Interstate Highway System.

PROPOSAL/ACTION RECOMMENDATION:

Beginning on the Hamilton-Wright County line approximately 2529 feet west of the SE Corner of Section 33-T90N-R23W, Wright County (NE Corner of Section 4-T89N-R23W, Hamilton County); thence northeasterly through Sections 33, 34, 27, 26, 23, 24 and 13-T90N-R23W to the Wright-Franklin County line near the NE Corner Section 13-T90N-R23W, Wright County (Section 18-T90N-R22W, Franklin County).

NOW, THEREFORE: Be it resolved that the Iowa Department of Transportation approve the location of Interstate 35 in Wright County, Iowa.

NOTE: To become effective upon adoption of this resolution.



COMMISSION ORDER

DIVISION: Planning & Research

SUBMITTED BY: Raymond L. Kassel

MEETING DATE: 3-9-76

DISCUSSION/BACKGROUND:

Interstate 35 located in Wright County should be officially included into the Primary Interstate Highway System.

PROPOSAL/ACTION RECOMMENDATION:

Beginning on the Hamilton–Wright County line near the SE Corner of Section 33–T90N–R23W, Wright County (NE Corner of Section 4–T89N–R23W, Hamilton County); thence northeasterly through Sections 33, 34, 27, 26, 23, 24 and 13–T90N–R23W to the Wright–Franklin County line near the NE Corner Section 13–T90N–R23W, Wright County (Section 18–T90N–R22W, Franklin County).

NOW, THEREFORE: Be it resolved that the Iowa Department of Transportation approve the location of Interstate Route 35 in Wright County, Iowa.

NOTE: To become effective upon adoption of this resolution.