

**OFFICIAL DESCRIPTION CHANGE**

**OFFICE:** Transportation Data

**ENTERED BY:** Stefani Wonders

**ENTERED DATE:** 09-18-2006

**DISCUSSION/BACKGROUND:**

Due to a review of our Primary System records, the primary route description for Interstate 80 in Scott County was revised.

**PROPOSAL/ACTION RECOMMENDATION:**

New Description – Interstate 80 and its extensions in Scott County described as follows:

Beginning on the Scott-Cedar County line at a point 2548 feet north of the SW Corner Section 19-T79N-R1E, Scott County (SE Corner Section 24-T79N-R1W, Cedar County); thence in an easterly direction through Sections 19, 20, and 21-T79N-R1E to a point near the E ¼ Corner Section 21-T79N-R1E; thence curving in a southeasterly direction through Section 22, 23, 26, and 25-T79N-R1E to the west corporation line of the City of Walcott, connecting with an unnamed street (approximately 784 feet south of the E ¼ Corner of said Section 25).

Walcott:

Beginning on an unnamed street at the west corporation line; thence southeasterly through Section 25-T79N-R1E and Section 30-T79N-R2E to the east corporation line connecting with an unnamed street (approximately 1386 feet south and 126 feet east of the Center of said Section 30).

Beginning again at the east corporation line of the City of Walcott connecting with an unnamed street; thence southeasterly through Sections 30, 29, 32, and 33-T79N-R2E to a point 241 feet north of the W ¼ Corner Section 34-T79N-R2E; thence easterly through Sections 34 and

35-T79N-R2E to the west corporation line of the City of Davenport connecting with an unnamed street (a point near the E  $\frac{1}{4}$  Corner of said Section 35).

Davenport:

Beginning on an unnamed street at the west corporation line; thence easterly and southeasterly through Section 36-T79N-R2E and Sections 31 and 32-T79N-R3E to a point near the W  $\frac{1}{4}$  Corner SW  $\frac{1}{4}$  Section 33-T79N-R3E; thence easterly and southeasterly through Sections 33, 34, and 35-T79N-R3E to a point near the SE Corner Section 35-T79N-R3E; thence southeasterly and easterly through Section 1-T78N-R3E and Sections 6, 5, and 4-T78N-R4E to the east corporation line/west corporation line of the City of Bettendorf connecting with an unnamed street (a point near the NW Corner of Section 3-T78N-R4E).

Bettendorf:

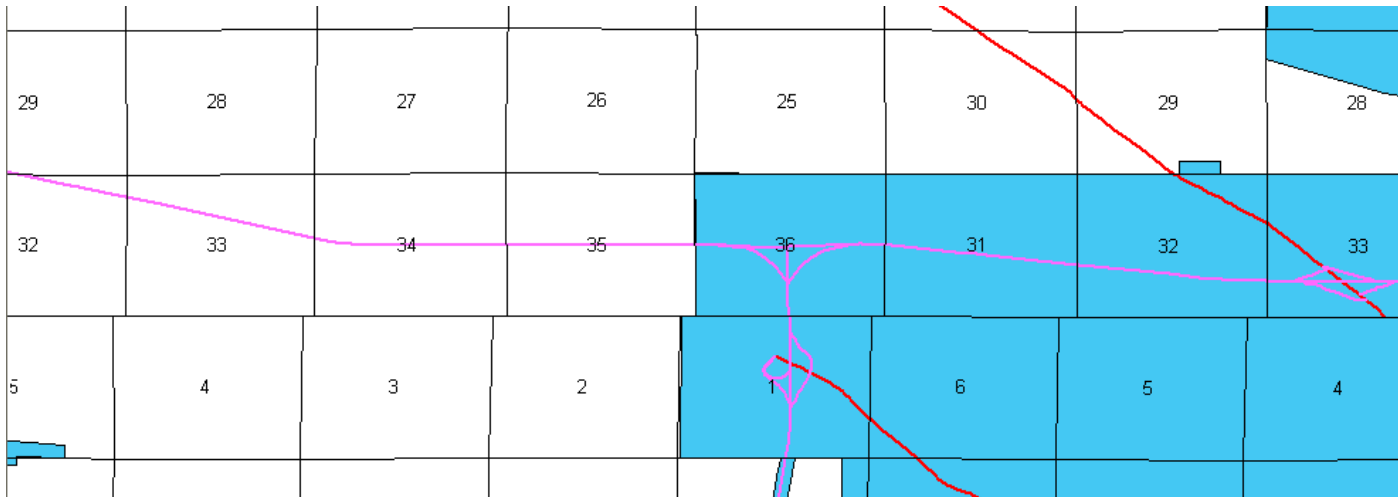
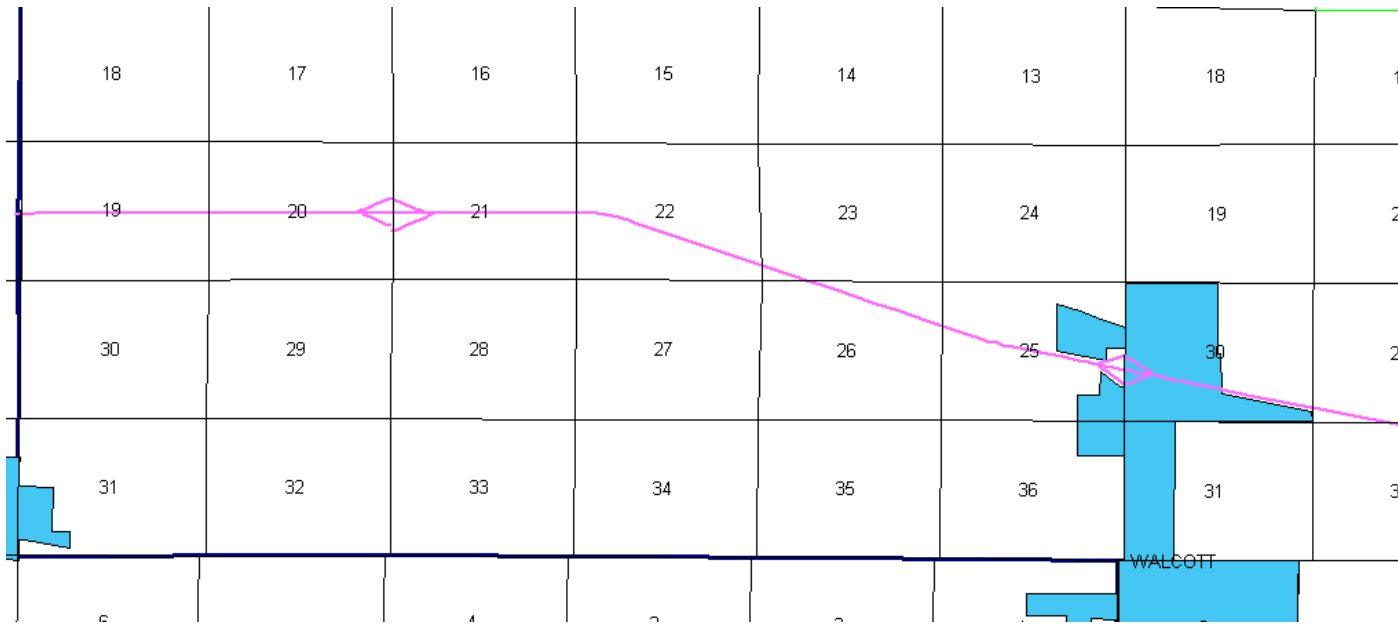
Beginning on the west corporation line/east corporation line of the City of Davenport connecting with an unnamed street; thence easterly through Sections 3, 2, and 1-T78N-R4E to the east corporation line connecting with an unnamed street ( a point near the NW Corner of Section 6-T78N-R5E).

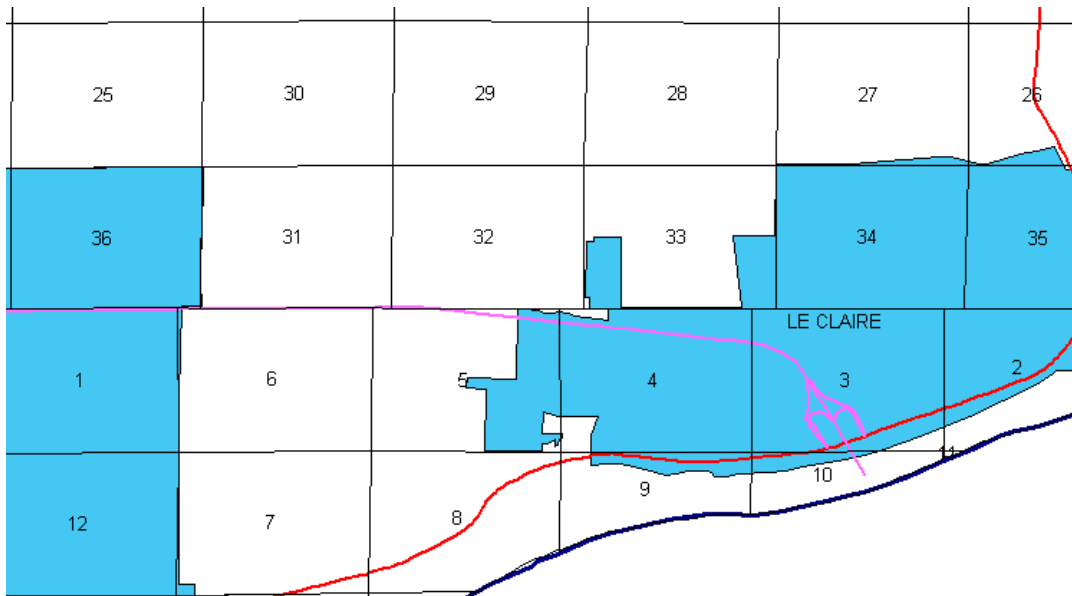
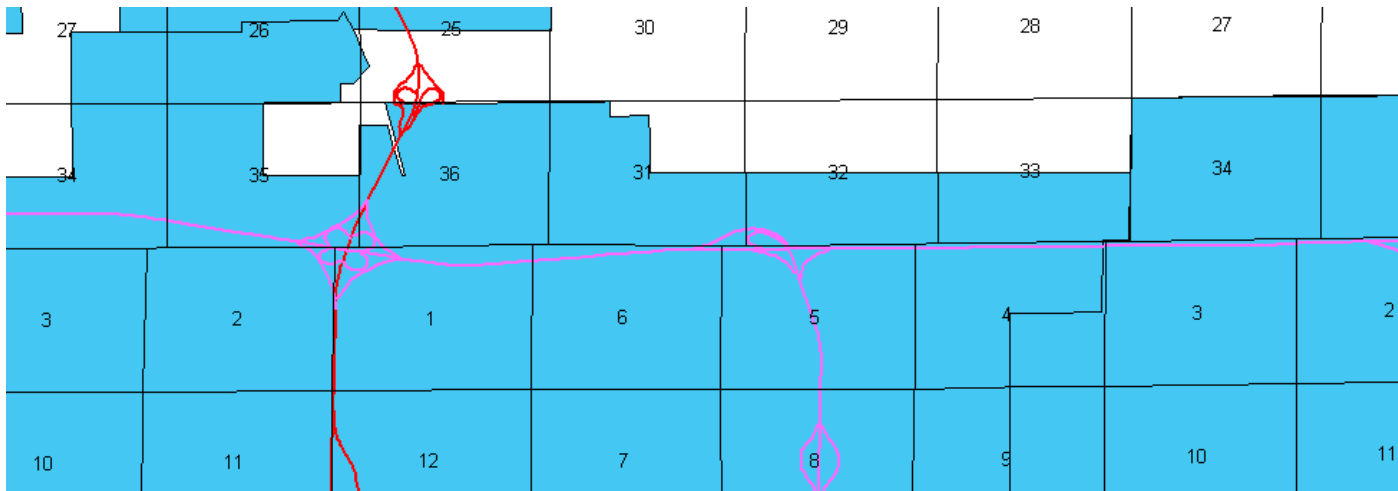
Beginning again at the east corporation line of the City of Bettendorf connecting with an unnamed street; thence easterly through Section 6-T73N-R5E to a point near the SE Corner Section 31-T79N-R5E; thence easterly and southeasterly through Section 5-T78N-R5E to the west corporation line of the City of Le Claire connecting with an unnamed street (approximately 1535 feet west and 311 feet south of the NE Corner of said Section 5).

Le Claire:

Beginning on an unnamed street at the west corporation line; thence southeasterly and southerly on said unnamed street through Sections 4 and

3-T78N-R5E to approximately 3513 feet east and 337 feet north of the SW Corner of said Section 3, Scott County (Iowa-Illinois State line).





## COMMISSION ORDER

**DIVISION:** Planning & Research

**COMMISSION ORDER NUMBER:** PR-79-272

**SUBMITTED BY:** C.I. MacGillivray

**MEETING DATE:** 11-2-78

**DISCUSSION/BACKGROUND:**

Due to a review of our Primary Interstate System Records, Interstate 80 in Scott County should be deleted and the new description added should be officially included into the Primary Interstate System.

**PROPOSAL/ACTION RECOMMENDATION:**

It is recommended that the old description of Interstate 80 in Scott County be deleted and the new description, as referred in the attached detailed description, be included in the Primary Interstate System effective upon the adoption of this resolution.

Locate Interstate 80 and its extensions in Scott County as follows:

Beginning on the Scott-Cedar County line at a point 2548 feet north of the SW Corner Section 19-T79N-R1E, Scott County (SE Corner Section 24-T79N-R1W, Cedar County); thence in an easterly direction through Sections 19, 20, and 21-T79N-R1E to a point 7 feet south of the E  $\frac{1}{4}$  Corner Section 21-T79N-R1E; thence curving in a southeasterly direction through Section 22-T79N-R1E to a point 714 feet north of the SE Corner of said Section 22; thence continuing in a southeasterly direction through Sections 23, 26, and 25-T79N-R1E to the west corporation line of the City of Walcott, connecting with an unnamed street.

Walcott:

Beginning on an unnamed street at the west corporation line; thence southeasterly through Section 25-T79N-R1E and Section 30-T79N-R2E to the east corporation line connecting with an unnamed street.

Beginning again at the east corporation line of the City of Walcott connecting with an unnamed street near the E  $\frac{1}{4}$  Corner of the SW  $\frac{1}{4}$  of Section 30-T79N-R2E; thence southeasterly through Sections 30, 29, 32, and 33-T79N-R2E to a point 241 feet north of the W  $\frac{1}{4}$  Corner Section 34-T79N-R2E; thence curving in an easterly direction to a point approximately  $\frac{1}{4}$  mile east of the W  $\frac{1}{4}$  Corner Section 34-T79N-R2E; thence in an easterly direction through Sections 34 and 35-T79N-R2E to the west corporation line of the City of Davenport connecting with an unnamed street.

Davenport:

Beginning on an unnamed street at the west corporation line at a point near the W  $\frac{1}{4}$  Corner of Section 36-T79N-R2E; thence easterly and southeasterly through Section 36-T79N-R2E and Sections 31 and 32-T79N-R3E to a point approximately  $\frac{1}{4}$  mile north of the SW Corner Section 33-T79N-R3E; thence easterly through Sections 33 and 34-T79N-R3E to a point approximately  $\frac{1}{4}$  mile north of the S  $\frac{1}{4}$  Corner

Section 34-T79N-R3E; thence curving southeasterly and continuing southeasterly through Sections 34 and 35-T79N-R3E to a point near the SE Corner Section 35-T79N-R3E; thence southeasterly and easterly through Section 1-T78N-R3E and Sections 6, 5, and 4-T78N-R4E to the east corporation line (west corporation line of the City of Bettendorf) connecting with an unnamed street.

Bettendorf:

Beginning on the west corporation line (east corporation line of the City of Davenport) connecting with an unnamed street at a point near the NW Corner of Section 3-T78N-R4E; thence easterly through Sections 3 and 2-T78N-R4E to a point approximately 1335 feet west and 75 feet south of the NE Corner Section 2-T78N-R4E; thence easterly through Sections 2 and 1-T78N-R4E to the east corporation line connecting with an unnamed street.

Beginning again at the east corporation line of the City of Bettendorf connecting with an unnamed street at a point near the NW Corner of Section 6-T78N-R5E; thence easterly through Section 6-T73N-R5E to a point near the SE Corner Section 31-T79N-R5E; thence easterly through Sections 5 and 4-T78N-R5E to the west corporation line of the City of Le Claire connecting with an unnamed street at a point near the center of the NW  $\frac{1}{4}$  of Section 4-T78N-R5E.

Le Claire:

Beginning on an unnamed street at the west corporation line at a point near the center of the NW  $\frac{1}{4}$  of Section 4-T78N-R5E; thence southeasterly to a point approximately 1250 feet south of the NE Corner Section 4-T78N-R4E; thence south-southeasterly through Section 3-T78N-R5E to a point near the S  $\frac{1}{4}$  Corner Section 3-T78N-R5E at the Mississippi River (Iowa-Illinois State line).

**COMMISSION ORDER**

**DIVISION:** Planning & Research

**COMMISSION ORDER NUMBER:** H-76-491

**SUBMITTED BY:** Raymond L. Kassel

**MEETING DATE:** 4-20-76

**DISCUSSION/BACKGROUND:**

Due to a review of our Primary Interstate Highway System records, Interstate 80 in Scott County should be deleted from the Primary Interstate Highway System and the new description added should be officially included into the Primary Interstate System.

**PROPOSAL/ACTION RECOMMENDATION:**

Locate Interstate 80 and its extensions in Scott County as follows:

Beginning on the Scott-Cedar County line at a point 2548 feet north of the SW Corner Section 19-T79N-R1E Scott County (SE Corner Section 24-T79N-R1W, Cedar County); thence in an easterly direction through Sections 19, 20, 21-T79N-R1E to a point 7 feet south of the E ¼ Corner Section 21-T79N-R1E; thence curving in a southeasterly direction through Section 22-T79N-R1E to a point 714 feet north of the SE Corner of said Section 22; thence continuing in a southeasterly direction through Sections 23, 26 and 25-T79N-R1E to a point 1981 feet north of the SE Corner Section 25-T79N-R1E (the west corporation line of the City of Walcott), connecting with an unnamed street.

Walcott:

Beginning on an unnamed street at the west corporation line approximately 1981 feet north of the SE Corner Section 25-T79N-R1E; thence southeasterly through Section 25-T79N-R1E to the east corporation line with an unnamed street near the E ¼ Corner of the SW ¼ of Section 30-T79N-R2E.

Beginning again at the east corporation limits of Walcott with an unnamed street near the E  $\frac{1}{4}$  Corner of the SW  $\frac{1}{4}$  of Section 30-T79N-R2E; thence southeasterly through Sections 30, 29, 32 and 33-T79N-R2E to a point 241 feet north of the W  $\frac{1}{4}$  Corner Section 34-T79N-R2E; thence curving in an easterly direction to a point approximately  $\frac{1}{4}$  mile east of the W  $\frac{1}{2}$  Corner Section 34-T79N-R2E; thence in an easterly direction through Sections 34 and 35-T79N-R2E, the west corporation line of the City of Davenport connecting with an unnamed street.

#### Davenport:

Beginning on an unnamed street at the west corporation line of the W  $\frac{1}{4}$  Corner of Section 36-T79N-R2E; thence easterly and southeasterly through Sections 31 and 32-T79N-R3E to a point approximately  $\frac{1}{4}$  mile north of the SW Corner Section 33-T79N-R3E; thence easterly through Sections 33 and 34-T79N-R3E to a point approximately  $\frac{1}{4}$  mile north of the S  $\frac{1}{4}$  Corner Section 34-T79N-R3E; thence curving southeasterly and continuing southeasterly through Sections 34 and 35-T79N-R3E to a point near the SE Corner Section 35-T79N-R3E; thence southeasterly and easterly through Section 1-T78N-R3E and Sections 6, 5, and 4-T78N-R4E to the east corporation line connecting with an unnamed street.

#### Bettendorf:

Beginning on an unnamed street at the west corporation line NW Corner of Section 3-T78N-R4E; thence easterly through Sections 3 and 2-T78N-R4E to a point approximately 1335 feet west and 75 feet south of the NE Corner Section 2-T78N-R4E; thence easterly through Sections 2 and 1-T78N-R4E to the east corporation line connecting with an unnamed street.

Beginning again at the east corporation line of Bettendorf with an unnamed street near the NW Corner of Section 6-T78N-R5E; thence easterly through Section 6-T78N-R5E, Section 31-T79N-R5E to a point

near the SE Corner Section 31-T79N-R5E; thence southeasterly through Section 32-T79N-R5E, Section 5 and 4-T78N-R5E to a point near the center of the NW ¼ of Section 4-T78N-R5E the west corporation line of the City of Le Claire connecting with an unnamed street.

Le Claire:

Beginning on an unnamed street at the west corporation line near the center of the NW ¼ of Section 4-T78N-R5E; thence southeasterly to a point approximately 1250 feet south of the NE Corner Section 4-T78N-R4E; thence south-southeasterly through Section 3-T78N-R5E to a point near the S ¼ Corner Section 3-T78N-R5E at the Mississippi River.

NOW, THEREFORE: Be it resolved that the Iowa Department of Transportation approve the revision of Interstate 80 in Scott County.

NOTE: To become effective upon adoption of this resolution.

#### **OFFICIAL DESCRIPTION CHANGE**

**COUNTY:** Scott

**ROUTE:** Interstate 80

**APPROVAL DATE:** 11-28-62

Beginning on the Scott-Cedar County line at a point 2548 feet north of the SW Corner Section 19-T79N-R1E Scott County (SE Corner Section 24-T79N-R1W Cedar County); thence in an easterly direction through Sections 19, 20, and 21-T79N-R1E to a point 7 feet south of the E ¼ Corner Section 21-T79N-R1E; thence curving in a southeasterly direction through Section 22-T79N-R1E to a point 714 feet north of the SE Corner of said Section 22; thence continuing in a southeasterly direction through Section 23, 26 and 25-T79N-R1E to a point 1981 feet north of the SE Corner Section 25-T79N-R1E and continuing in a southeasterly direction

through Sections 30, 29, 32, and 33-T79N-R2E to a point 241 feet north of the W  $\frac{1}{4}$  Corner Section 34-T79N-R2E; thence curving in an easterly direction to a point approximately  $\frac{1}{4}$  mile east of the W  $\frac{1}{2}$  Corner Section 34-T79N-R2E; thence in an easterly direction through Sections 34, 35 and 36-T79N-R2E, and east-southeasterly through Sections 31 and 32-T79N-R3E to a point approximately  $\frac{1}{4}$  mile north of the SW Corner Section 33-T79N-R3E; thence easterly through Sections 33 and 34-T79N-R3E to a point approximately  $\frac{1}{4}$  mile north of the S  $\frac{1}{4}$  Corner Section 34-T79N-R3E; thence curving south easterly, and continuing southeasterly through Sections 34 and 35-T79N-R3E to a point near the SE Corner Section 35-T79N-R3E; thence southeasterly and easterly through Section 1-T78N-R3E, Sections 6, 5, 4, 3 and 2-T78N-R4E to a point approximately 1335 feet west and 75 feet south of the NE Corner Section 2-T78N-R4E; thence easterly through Section 2 and 1-T78N-R4E, Section 6-T78N-R5E, Section 31-T79N-R5E to a point near the SE Corner Section 31-T79N-R5E; thence southeasterly through Section 32-T79N-R5E, Sections 5 and 4-T78N-R5E to a point approximately 1250 feet south of the NE Corner Section 4-T78N-R5E; thence south-southeasterly through Section 3-T78N-R5E to a point near the S  $\frac{1}{4}$  Corner Section 3-T78N-R5E at the Mississippi River.