

**OFFICIAL DESCRIPTION CHANGE**

**OFFICE:** Transportation Data

**ENTERED BY:** Stefani Wonders

**ENTERED DATE:** 09-14-2006

**DISCUSSION/BACKGROUND:**

Due to a review of our Primary System records, the primary route description for Interstate 80 in Polk County was found to be in slight error and therefore was re-written.

**PROPOSAL/ACTION RECOMMENDATION:**

New Description – Interstate 80 and its extensions in Polk County described as follows:

West Des Moines:

Beginning on an unnamed street at the west corporation line (Polk-Dallas County line) at a point near the W  $\frac{1}{4}$  Corner Section 6-T78N-R25W, Polk County (E  $\frac{1}{4}$  Corner Section 1-T78N-R26W, Dallas County); thence easterly on unnamed street to a point approximately 1318 feet east of the center of Section 6-T78N-R25W connecting with Interstate 35; thence northerly through said Section 6 to the north corporation line/south corporation line of Clive connecting with an unnamed street (approximately 2036 feet west of the NE Corner of said Section 6).

Clive:

Beginning on an unnamed street at the south corporation line; thence northerly on said unnamed street to the north corporation line/south corporation line of Urbandale connecting with an unnamed street (approximately 684 feet west of the NE Corner Section 32-T78N-R25W).

Urbandale:

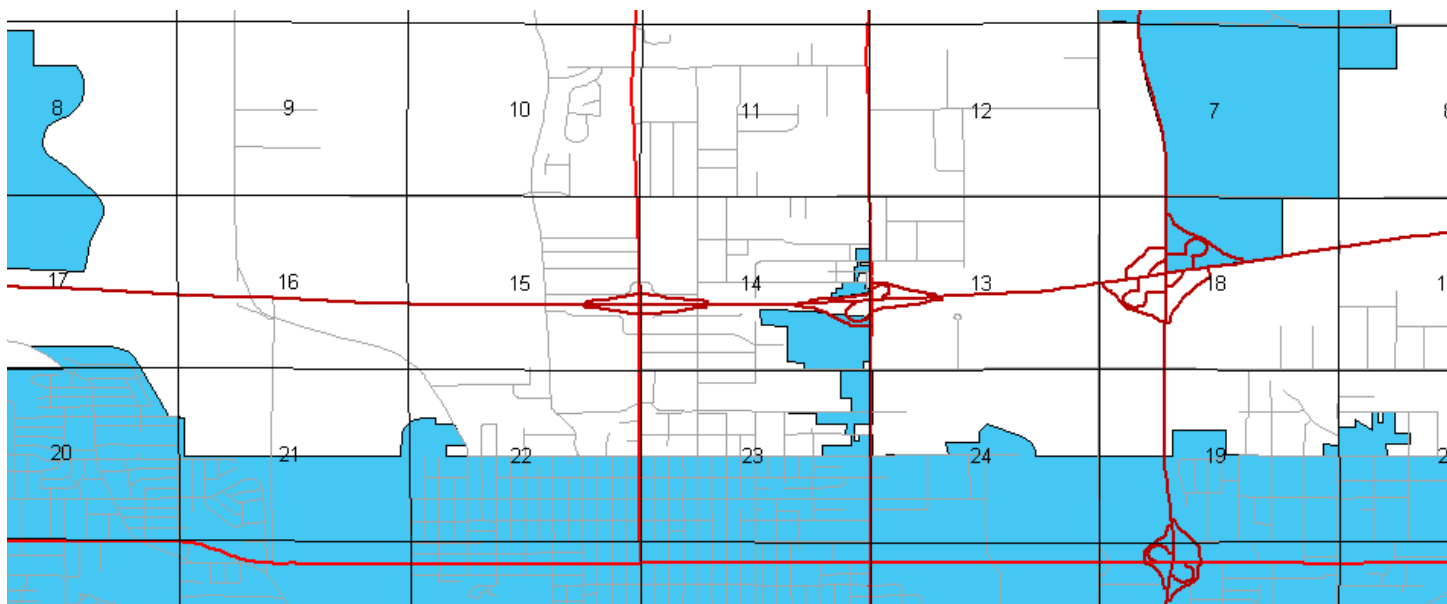
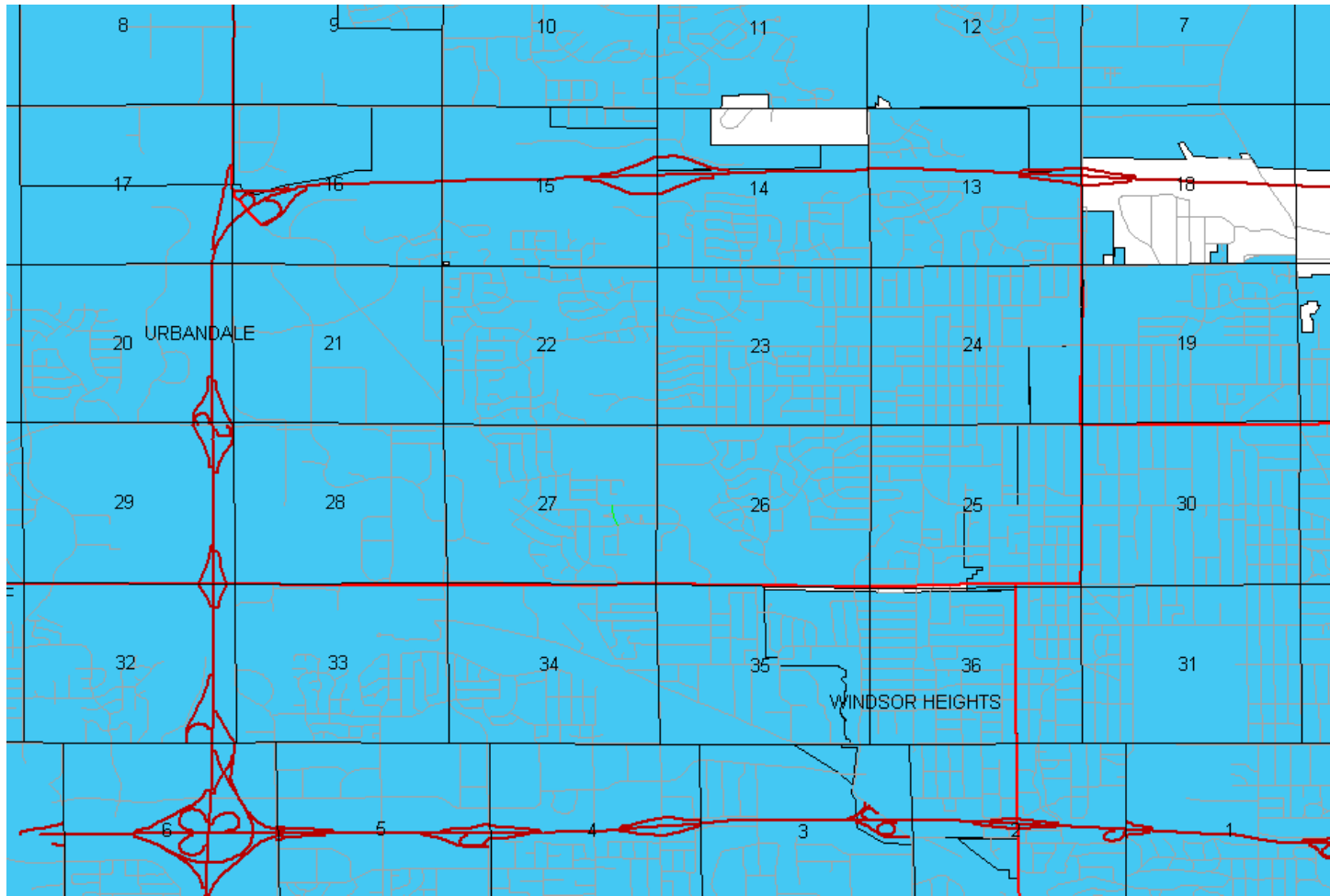
Beginning on an unnamed street at the south corporation line; thence northerly, northeasterly, and easterly on said unnamed street through Sections 29, 20, 17, 16, 15, 14, and 13-T79N-R25W to the east corporation line (a point near the E  $\frac{1}{4}$  Corner of said Section 13).

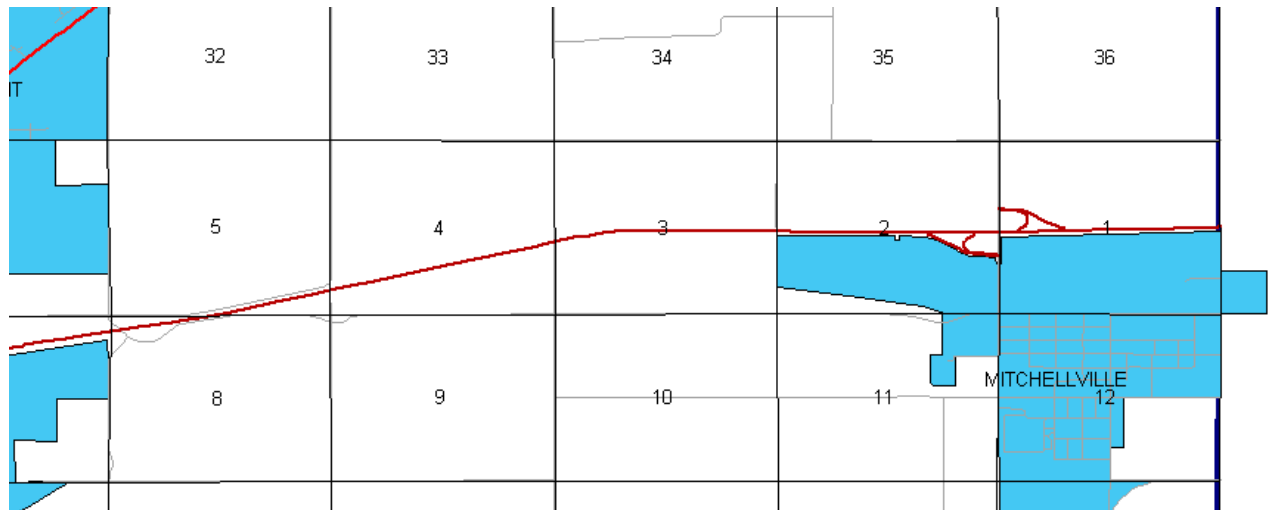
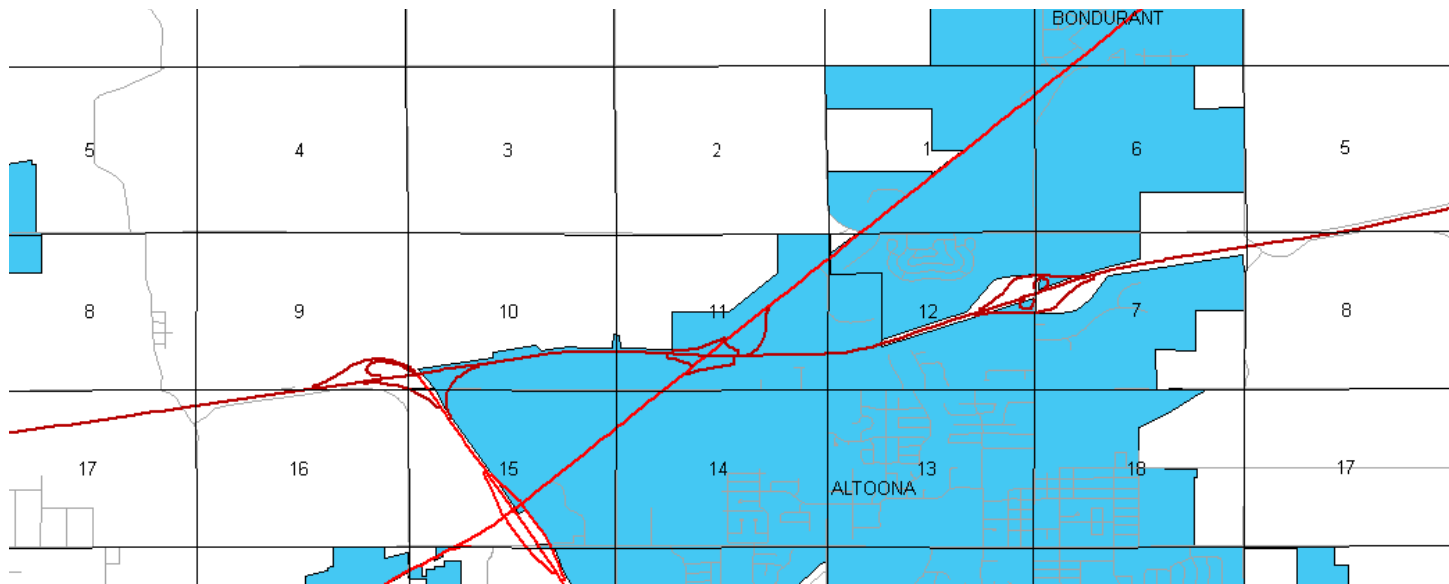
Beginning again on the east corporation line of Urbandale connecting with an unnamed street; thence easterly through Sections 18, 17, 16, and 15-T79N--R24W to a point (junction Iowa 415) approximately 1950 feet north of the SE Corner Section 14-T79N-R24W; thence easterly through Section 14-T79N-R24W to a point (junction US 69) approximately 2100 feet north of the SE Corner Section 14-T79N-R24W; thence easterly through Section 13-T79N-R24W and Section 18-T79N-R23W to a point (junction Interstate 35 and Interstate 235) approximately 2085 feet east of the W  $\frac{1}{4}$  Corner Section 18-T79N-R23W; thence easterly and northeasterly through Sections 18, 17, 16, 9, and 10-T79N-R23W to the west corporation line of Altoona connecting with an unnamed street (approximately 544 feet north and 472 feet east of the SW Corner of said Section 10).

Altoona:

Beginning on an unnamed street at the west corporation line; thence easterly on said unnamed street to the east corporation line (approximately 1477 feet north and 1808 feet east of the SW Corner Section 12-T79N-R23W).

Beginning again on the east corporation line of Altoona connecting with an unnamed street; thence northeasterly through Section 12-T79N-R23W and Sections 7, 8, 5, and 4-T79N-R22W to a point approximately 360 feet south of the E  $\frac{1}{4}$  Corner of Section 4-T79N-R22W; thence curving easterly and following substantially the center section line through Sections 3, 2, and 1-T79N-R22W to the Polk-Jasper County line at a point near the E  $\frac{1}{4}$  Corner Section 1-T79N--R22W, Polk County (W  $\frac{1}{4}$  Corner Section 6-T79N-R21W, Jasper County).





## COMMISSION ORDER

**DIVISION:** Planning & Research

**COMMISSION ORDER NUMBER:** PR-79-272

**SUBMITTED BY:** C.I. MacGillivray

**MEETING DATE:** 11-2-78

## DISCUSSION/BACKGROUND:

Due to a review of our Primary Interstate system records, Interstate 80 in Polk County should be deleted and the new description added should be officially included into the Primary Interstate System.

Interstate 80 begins on the corporation line of West Des Moines (Polk–Dallas County line) approximately ½ mile south of the NW Corner of West Des Moines, and travels northerly and east–northeasterly via West Des Moines, Urbandale, and Johnston to the Polk–Jasper County line approximately ½ mile north of Mitchellville, Iowa.

#### **PROPOSAL/ACTION RECOMMENDATION:**

Locate Interstate 80 and its extensions in Polk County as follows:

West Des Moines:

Beginning on an unnamed street at the west corporation line (Polk–Dallas County line) at a point near the W ¼ Corner Section 6–T78N–R25W, Polk County (E ¼ Corner Section 1–T78N–R26W, Dallas County); thence easterly on unnamed street to a point approximately 1000 feet east of the center of Section 6–T78N–R25W; thence northerly through said Section 6 to the north corporation line connecting with an unnamed street.

Beginning on the north corporation line of the City of West Des Moines connecting with an unnamed street; thence in a northerly direction through Section 32–T78N–R25W to the south corporation line of the City of Urbandale connecting with an unnamed street.

Urbandale:

Commencing on an unnamed street at the south corporation line; thence northerly on said unnamed street through Sections 29 and 20–T79N–R25W to the north corporation line connecting with an unnamed street.

Beginning again at the north corporation line of the City of Urbandale connecting with an unnamed street; thence curving in a northeasterly direction through the SE  $\frac{1}{4}$  of Section 17-T79N-R25W and the SW  $\frac{1}{4}$  of Section 16-T79N-R25W to a point (junction Iowa 141) in the SW  $\frac{1}{4}$  of said Section 16; thence curving in a northeasterly and easterly direction through Sections 16, 15, and 14-T79N-R25W to the westerly corporation line of the City of Urbandale connecting with an unnamed street.

Urbandale:

Commencing again on an unnamed street at the westerly corporation line; thence easterly on said unnamed street through Sections 14 and 13-T79N-R25W to the east corporation line (west corporation line of the City of Johnston) connecting with an unnamed street.

Johnston:

Beginning on the west corporation line (east corporation line of the City of Urbandale) connecting with an unnamed street; thence easterly through Section 18-T79N-R24W to the east corporation line connecting with an unnamed street.

Beginning again on the east corporation line of the City of Johnston connecting with an unnamed street; thence easterly through Sections 18, 17, 16, and 15-T79N-R24W to a point (junction Iowa 415) approximately 1950 feet north of the SE Corner Section 14-T79N-R24W; thence in a generally easterly direction through Section 14-T79N-R24W to a point (junction US 69) approximately 1850 feet north of the SE Corner Section 14-T79N-R24W; thence in a generally easterly direction through Section 13-T79N-R24W and Section 18-T79N-R23W to a point (junction Interstate Routes 35 and 235) approximately  $\frac{1}{4}$  mile east of the W  $\frac{1}{4}$  Corner Section 18-T79N-R23W; thence east-northeasterly through Sections 18, 17, and 16-T79N-R23W to a point approximately 172 feet east of the N  $\frac{1}{4}$  Corner Section 16-T79N-R23W, and continuing in a northeasterly and easterly direction through Sections 9, 10, and 11-T79N-R23W (junction US 65) to a point approximately 1182 feet north of the SE Corner of said Section 11; thence northeasterly through Section 12-T79N-R23W and Sections 7, 8, 5, and 4-T79N-R22W to a point approximately 360 feet south of the E  $\frac{1}{4}$  Corner of Section 4-T79N-R22W; thence curving easterly and following substantially the center section line through Sections 3, 2, and 1-T79N-R22W to the Polk-Jasper County line at a point approximately 136 feet north of the E  $\frac{1}{4}$  Corner Section 1-T79N-R22W, Polk County (W  $\frac{1}{4}$  Corner Section 6-T79N-R21W, Jasper County).

NOW, THEREFORE: Be it resolved that the Iowa Department of Transportation approve the location of Interstate 80 in Polk County, Iowa.

NOTE: To become effective upon the adoption of this resolution.

**COMMISSION ORDER**

**DIVISION:** Planning & Research

**SUBMITTED BY:** Raymond L. Kassel

**MEETING DATE:** 3-9-76

**DISCUSSION/BACKGROUND:**

Due to a review of our Primary Interstate Highway System records, Interstate 80 in Urbandale, Polk County should be deleted from the Primary Interstate Road Extension and the new description added should be officially included into the Primary Interstate Road Extension.

**PROPOSAL/ACTION RECOMMENDATION:**

Locate Interstate 80 in Urbandale, Polk County as follows:

Commencing on an unnamed street at the south corporation line; thence northerly on said unnamed street through Sections 29 and 20-T79N-R25W to the north corporation line.

Commencing again on an unnamed street at the west corporation line; thence easterly on said unnamed street through Sections 14 and 13-T79N-R25W to the east corporation line.

NOW, THEREFORE: Be it resolved that the Iowa Department of Transportation approve the revision of Interstate 80, Urbandale, Polk County, Iowa.



NOTE: To become effective upon adoption of this resolution.

**COMMISSION RESOLUTION**

**DIVISION:** Planning & Research

**COMMISSION ORDER NUMBER:** 74-500

**SUBMITTED BY:** Gene R. Mills

**MEETING DATE:** 5-1-74

Locate Interstate 80 and its extensions in Polk County as follows:

Beginning on the north corporation line of the City of West Des Moines connecting with an unnamed street; thence in a northerly direction through Section 32 to the south corporation line of the City of Urbandale.

Urbandale:

Commencing on an unnamed street at the south corporation line; thence northerly on said unnamed street through Section 14 and 13-T79N-R25W to the north corporation line.

Beginning again at the north corporation line of the City of Urbandale connecting with an unnamed street; thence curving in a northeasterly and easterly direction through the SE  $\frac{1}{4}$  of Section 17-T79N-R25W and the SW  $\frac{1}{4}$  of Section 16-T79N-R25W to a point near the center of Section 16-T79N-R25W; thence in an easterly direction through Sections 16, 15 and 14 to the west corporation line of Urbandale connecting with an unnamed street.

Urbandale:

Commencing again on an unnamed street at the west corporation line; thence easterly on said unnamed street through Sections 14 and 13-T79N-R25W to the east corporation line.

Beginning again at the east corporation line of Urbandale connecting with an unnamed street; thence easterly through Sections 18, 17, 16, 15, 14 and 13-T79N-R24W and Section 18-T79N-R23W to a point approximately  $\frac{1}{4}$  mile east of the W  $\frac{1}{4}$  Corner Section 18-T79N-R23W thence east-northeasterly through Sections 18, 17 and 16-T79N-R23W to a point approximately 172 feet east of the N  $\frac{1}{4}$  Corner of Section 16-T79N-R23W, and continuing in a northeasterly and easterly direction through Sections 9, 10 and 11-T79N-R23W to a point approximately 1182 feet north of the SE Corner of Section 11-T79N-R23W; thence northeasterly through Section 12-T79N-R23W and Sections 7, 8, 5 and 4-T79N-R22W to a point approximately 360 feet south of the E  $\frac{1}{4}$  Corner of Section 4-T79N-R22W; thence curving easterly and following substantially the quarter section line through Sections 3, 2 and 1-T79N-R22W to the Polk-Jasper County line at a point approximately 136 feet north of the E  $\frac{1}{4}$  Corner Section 1-T79N-R22W, Polk County (W  $\frac{1}{4}$  Corner Section 6-T79N-R21W, Jasper County).

NOW, THEREFORE: Be it resolved that the Iowa State Highway Commission approve the location of Interstate 80 and its extensions in Polk County, Iowa.

NOTE: To become effective upon the adoption of this resolution.

#### **OFFICIAL DESCRIPTION CHANGE**

**COUNTY:** Polk

**ROUTE:** Interstate 80

**APPROVAL DATE:** 1-29-64

## West Des Moines:

Commencing on an unnamed street at the west corporation line (Polk-Dallas County line) at a point approximately 100 feet north of the W  $\frac{1}{4}$  Corner Section 6-T78N-R25W, Polk County (E  $\frac{1}{4}$  Corner Section 1-T78N-R26W, Dallas County); thence east on said unnamed street to a point approximately 1,000 feet east and 100 feet north of the center of Section 6-T78N-R25W; thence northerly on an unnamed street to the north corporation line.

Beginning on the north corporation line of the City of West Des Moines connecting with an unnamed street thence north through Section 32-79-25 to the south corporation line of Urbandale; thence in a northerly direction through Sections 29 and 20-T79N-R25W to a point approximately 560 feet west of the SE Corner of Section 17-T79N-R25W; thence curving in a northeasterly and easterly direction through the SE  $\frac{1}{4}$  of Section 17-T79N-R25W and the SW  $\frac{1}{4}$  of Section 16-T79N-R25W to a point near the center of Section 16-T79N-R25W; thence in an easterly direction through Sections 16, 15 and 14-T79N-R25W to the west corporation line of Urbandale connecting with an unnamed street.

Beginning on the east corporation line connecting with unnamed street thence easterly through Sections 18, 17, 16, 15, 14 and 13-T79N-R24W and Section 18-T79N-R23W to a point approximately  $\frac{1}{4}$  mile east of the W  $\frac{1}{4}$  Corner of Section 18-T79N-R23W; thence east-northeasterly through Sections 18, 17 and 16-T79N-R23W to a point approximately 172 feet east of the N  $\frac{1}{4}$  Corner of Section 16-T79N-R23W and continuing in a northeasterly and easterly direction through Sections 9, 10 and 11-T79N-R23W to a point approximately 1182 feet north of the SE Corner of Section 11-T79N-R23W; thence northeasterly through Section 12-T79N-R23W and Sections 7, 8, 5 and 4-T79N-R22W to a point approximately 360 feet south of the E  $\frac{1}{4}$  Corner of Section 4-T79N-R22W; thence curving easterly and following substantially the quarter section line through Sections 3, 2 and 1-T79N-R22W to the Polk-Jasper County line at a point approximately 136 feet north of the E

¼ Corner of Section 1-T79N-R22W, Polk County (W ¼ Corner of Section 6-T79N-R21W, Jasper County).