

**OFFICIAL DESCRIPTION CHANGE**

**OFFICE:** Transportation Data

**ENTERED BY:** Stefani Wonders

**ENTERED DATE:** 09-18-2006

**DISCUSSION/BACKGROUND:**

Due to a review of our Primary System records, the primary route description for Interstate 80 in Johnson County was revised.

**PROPOSAL/ACTION RECOMMENDATION:**

New Description – Interstate 80 and its extensions in Johnson County described as follows:

Beginning at the Johnson-Iowa County line at a point near the SW Corner Section 31-T80N-R8W, Johnson County (SE Corner Section 36-T80N-R9W, Iowa County); thence easterly following substantially the section line through Sections 31, 32, and 33-T80N-R8W to a point approximately 1970 feet west and 20 feet north of the SE Corner Section 33-T80N-R8W; thence northeasterly through Sections 33, 34 and 35-T80N-R8W to a point approximately 500 feet west and 20 feet north of the E ¼ Corner Section 35-T80N-R8W; thence easterly following substantially the center section line through Sections 35 and 36-T80N-R8W; Sections 31 and 32-T80N-R7W to the west corporation line of Tiffin connecting with an unnamed street (a point near the E ¼ Corner of said Section 32).

Tiffin:

Beginning on an unnamed street at the west corporation line; thence easterly on said unnamed street to the east corporation line/west corporation line of Coralville connecting with an unnamed street (2561 feet south of the NW Corner Section 35-T80N-R7W).

Coralville:

Beginning on an unnamed street at the west corporation line/east corporation line of Tiffin; thence easterly and southeasterly on said unnamed street through Sections 35 and 36-T80N-R7W and Sections 31 and 32-T80N-R6W to near the S  $\frac{1}{4}$  Corner of said Section 32; thence easterly through Section 5 and 4-T79N-R6W to the east corporation line/west corporation line of Iowa City connecting with an unnamed street (approximately 964 feet east and 164 feet south of the NW Corner of said Section 4).

Iowa City:

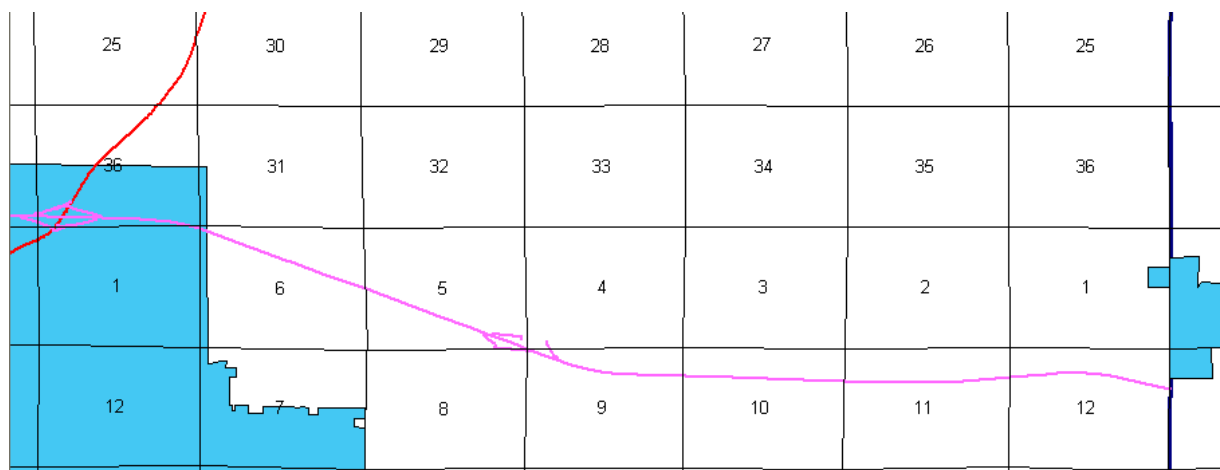
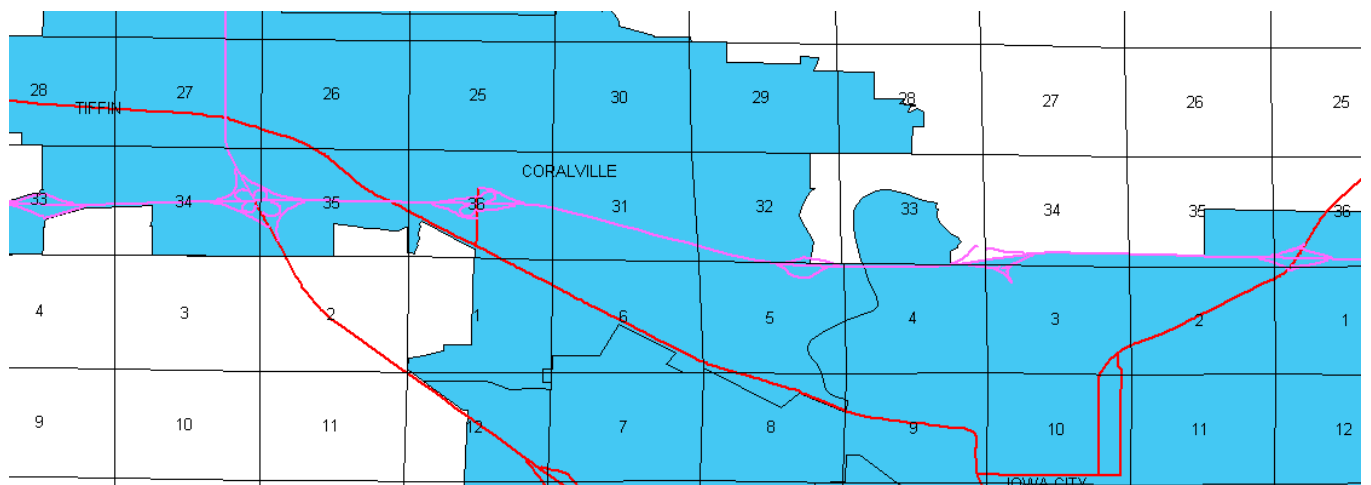
Beginning on an unnamed street at the west corporation line/east corporation line of Coralville; thence easterly and northeasterly on said unnamed street through Section 4-T79N-R6W and Section 33-T80N-R6W to the east corporation line (approximately 1618 feet west of the SE Corner of said Section 33).

Beginning again on the east corporation line of the City of Iowa City connecting with an unnamed street; thence northeasterly and easterly through Sections 33, 34, and 35-T80N-R6W to the west corporation line of Iowa City connecting with an unnamed street (approximately 467 feet north of the S  $\frac{1}{4}$  Corner of said Section 35).

Iowa City:

Beginning on an unnamed street at the west corporation line; thence easterly on said unnamed street to the east corporation line (approximately 205 feet south and 297 feet east of the NW Corner Section 6-T79N-R5W).

Beginning again on the east corporation line of Iowa City connecting with an unnamed street; thence southeasterly through Sections 6, 5, and 9-T79N-R5W; thence easterly, northeasterly, and southeasterly through Sections 9, 10, 11 and 12-T79N-R5W to a point on the Johnson-Cedar County line approximately 1775 feet south of the NE Corner Section 12-T79N-R5W, Johnson County (NW Corner Section 7-T79N-R5W, Cedar County).



**COMMISSION ORDER**

**DIVISION:** Planning & Research

**COMMISSION ORDER NUMBER:** PR-79-272

**SUBMITTED BY:** C.I. MacGillivray

**MEETING DATE:** 11-2-78

**DISCUSSION/BACKGROUND:**

Due to a review of our Primary Road System records Interstate 80 in Johnson County should be deleted and the new description added should be officially included into the Primary Road System.

**PROPOSAL/ACTION RECOMMENDATION:**

It is recommended that the old description of Interstate 80 in Johnson County be deleted and the new description, as referred in the attached detailed description, be included in the Primary Road System effective upon the adoption of this resolution.

Locate Interstate 80 and its extensions in Johnson County as follows:

Beginning at the Johnson-Iowa County line at a point approximately 218 feet north of the SW Corner Section 31-T80N-R8W, Johnson County (SE Corner Section 36-T80N-R9W, Iowa County); thence easterly following substantially the section line through Sections 31 and 32-T80N-R8W to a point approximately 176 feet north of the S  $\frac{1}{4}$  Corner Section 32-T80N-R8W; thence easterly following substantially the section line through Sections 32 and 33-T80N-R8W to a point approximately 1970 feet west and 20 feet north of the SE Corner Section 33-T80N-R8W; thence northeasterly through Sections 33, 34 and 35-T80N-R8W to a point approximately 500 feet west and 20 feet north of the E  $\frac{1}{4}$  Corner Section 35-T80N-R8W; thence easterly following substantially the center section line through Sections 35 and 36-T80N-R8W; Sections 31, 32 and 33-T80N-R7W to a point approximately 212 feet north of the center of

Section 33-T89N-R7W; thence easterly following substantially the center section line through Sections 33, 34 (junction Interstate 330) and 35-T80N-R7W to the west corporation line of the City of Coralville connecting with an unnamed street.

Coralville:

Beginning on an unnamed street at the west corporation line near the S  $\frac{1}{4}$  Corner of the NE  $\frac{1}{4}$  Section 35-T80N-R7W; thence easterly and southeasterly through Sections 30, 31 and 32-T80N-R6W on unnamed street to the east corporation line near the SW Corner of Section 33-T80N-R6W (Iowa River) connecting with an unnamed street.

Beginning again on the east corporation line of the City of Coralville connecting with an unnamed street near the NW Corner of Section 4-T79N-R6W (Iowa River); thence easterly through Section 4-T79N-R6W and Sections 33 and 34-T80N-R6W to a point approximately 300 feet east and 275 feet north of the SW Corner Section 34-T80N-R6W; thence northeasterly through Section 34-T80N-R6W to a point approximately 590 feet north of the S  $\frac{1}{4}$  Corner Section 34-T80N-R6W; thence easterly through Sections 34 and 35-T80N-R6W to the west corporation limits of the City of Iowa City connecting with an unnamed street.

Iowa City:

Beginning on an unnamed street at the west corporation line at a point near the S  $\frac{1}{4}$  Corner of Section 35-T80N-R7W; thence easterly and southeasterly through Sections 35 and 36-T80N-R6W, Section 1-T79N-R6W and Section 6-T79N-R5W to the east corporation line connecting with an unnamed street.

Beginning again on the east corporation line of the City of Iowa City connecting with an unnamed street; thence southeasterly through Sections 6 and 5-T79N-R5W to approximately the SE Corner Section 5-T79N-R5W; thence southeasterly through Section 9-T79N-R5W and easterly, northeasterly, and southeasterly through Sections 9, 10, 11 and 12-T79N-R5W to a point on the Johnson-Cedar County line approximately 1775 feet south of the NE Corner Section 12-T79N-R5W, Johnson County (NW Corner Section 7-T79N-R5W, Cedar County).

**COMMISSION ORDER****DIVISION:** Planning & Research**SUBMITTED BY:** Raymond L. Kassel**DISCUSSION/BACKGROUND:**

Due to a review of our Primary Road System records, Interstate 80 in Johnson County should be deleted from the Primary Road System, and the new description added should be officially included into the Primary Road System.

**PROPOSAL/ACTION RECOMMENDATION:**

Locate Interstate 80 in Johnson County as follows:

Beginning at the Johnson-Iowa County line at a point approximately 218 feet north of the SW Corner Section 31-T80N-R8W, Johnson County (SE Corner Section 36-T80N-R9W, Iowa County); thence easterly following substantially the section line through Sections 31 and 32-T80N-R8W to a point approximately 176 feet north of the S  $\frac{1}{4}$  Corner Section 32-T80N-R8W; thence easterly following substantially the section line through Sections 32 and 33-T80N-R8W to a point approximately 1970 feet west and 20 feet north of the SE Corner Section 33-T80N-R8W; thence northeasterly through Sections 33, 34 and 35-T80N-R8W to a point approximately 500 feet west and 20 feet north of the E  $\frac{1}{4}$  Corner Section 35-T80N-R8W; thence easterly following substantially the quarter section line through Sections 35 and 36-T80N-R8W, Sections 31, 32 and 33-T80N-R7W to a point approximately 212 feet north of the center of Section 33-T80N-R7W; thence easterly following substantially the quarter section line through Sections 33, 34, 35-T80N-R7W to a point approximately 900 feet from the NE Corner of Section 35-T80N-R7W, the west city limits of the City of Coralville connecting with an unnamed street.

Beginning again on the east corporation line of the City of Coralville connecting with an unnamed street near the SW Corner of Section 33-T80N-R6W (Iowa River); thence easterly through Sections 33 and 34-T80N-R6W to a point approximately 300 feet east and 275 feet north of the SW Corner Section 34-T80N-R6W; thence northeasterly through Section 34-T80N-R6W to a point approximately 590 feet north of the S  $\frac{1}{4}$  Corner Section 34-T80N-R6W; thence easterly through Sections 34 and 35-T80N-R6W to a point near the S  $\frac{1}{4}$  Corner Section 35 (west corporation limits of the City of Iowa City).

Beginning again at the east corporation limits of the City of Iowa City near the NW Corner of Section 6-T79N-R5W; thence southeasterly through Sections 6 and 5-T79N-R5W to approximately the SE Corner Section 5-T79N-R5W; thence southeasterly through Section 9-T79N-R5W to a point approximately 2536 feet southeast of the NE Corner Section 9-T79N-R5W; thence easterly, northeasterly, and southeasterly through Sections 9, 10, 11, and 12 to a point on the Johnson-Cedar County line approximately 1775 feet south of the NE Corner Section 12-T79N-R5W, Johnson County (NW Corner Section 7-T79N-R4W, Cedar County).

#### Coralville:

Beginning on an unnamed street at the west corporation line near the S  $\frac{1}{4}$  Corner of the NE  $\frac{1}{4}$  Section 35-T80N-R7W; thence easterly and southeasterly on unnamed street to the east corporation limits near the SW Corner of Section 33-T80N-R6W (Iowa River) connecting with an unnamed street.

#### Iowa City:

Beginning on an unnamed street at the west corporation line at a point approximately on the S  $\frac{1}{4}$  Corner of Section 35-T80N-R7W; thence easterly and southeasterly through Sections 35 and 36-T80N-R6W to the east corporation line near a point in the NW Corner Section 6-T79N-R5W connecting with an unnamed street.



NOW, THEREFORE: Be it resolved that the Iowa Department of Transportation approve the revision of Interstate 80 in Johnson County, Iowa.

NOTE: To become effective upon adoption of this resolution.

REVISED: 1978

**OFFICIAL DESCRIPTION CHANGE**

**COUNTY:** Johnson

**ROUTE:** Interstate 80

**APPROVAL DATE:** 3-9-76

Beginning at the Johnson-Iowa County line at a point approximately 218 feet north of the SW Corner Section 31-T80N-R8W, Johnson County (SE Corner Section 36-T80N-R9W, Iowa County); thence easterly following substantially the section line through Sections 31 and 32-T80N-R8W to a point approximately 176 feet north of the S  $\frac{1}{4}$  Corner Section 32-T80N-R8W; thence easterly following substantially the section line through Sections 32 and 33-T80N-R8W to a point approximately 170 feet west and 20 feet north of the SE Corner Section 33-T80N-R8W; thence northeasterly through Sections 33, 34, and 35-T80N-R8W to a point approximately 500 feet west and 20 feet north of the E  $\frac{1}{4}$  Corner Section 35-T80N-R8W; thence easterly following substantially the quarter section line through Sections 35 and 36-T80N-R8W, Sections 31, 32, and 33-T80N-R7W to a point approximately 212 feet north of the center of Section 33-T80N-R7W; thence easterly following substantially the quarter section line through Sections 33, 34, 35-T80N-R7W to a point approximately 900 feet from the NE Corner of Section 35-T80N-R7W, the west city limits of the City of Coralville connecting with an unnamed street.

Coralville:

Beginning on an unnamed street at the west corporation line near the S  $\frac{1}{4}$  Corner of the NE  $\frac{1}{4}$  Section 35-T80N-R7W; thence easterly and southeasterly on unnamed street to the east corporation limits near the SW Corner of Section 33-T80N-R6W (Iowa River) connecting with an unnamed street.

Beginning again on the east corporation line of the City of Coralville connecting with an unnamed street near the SW Corner of Section 33-T80N-R6W (Iowa River); thence easterly through Sections 33 and 34-T80N-R6W to a point approximately 300 feet east and 275 feet north of the SW Corner Section 34-T80N-R6W; thence northeasterly through Section 34-T80N-R6W to a point approximately 590 feet north of the S  $\frac{1}{4}$  Corner Section 34-T80N-R6W; thence easterly through Sections 34 and 35-T80N-R6W to a point near the S  $\frac{1}{4}$  Corner Section 35 (west corporation limits of the City of Iowa City).

Iowa City:

Beginning on an unnamed street at the west corporation line at a point approximately on the S  $\frac{1}{4}$  Corner of Section 35-T80N-R7W; thence easterly and southeasterly through Sections 35 and 36-T80N-R6W to the east corporation line near a point in the NW Corner Section 6-T79N-R5W connecting with an unnamed street.

Beginning again at the east corporation limits of the City of Iowa City near the NW Corner of Section 6-T79N-R5W; thence southeasterly through Sections 6 and 5-T79N-R5W to approximately the SE Corner Section 5-T79N-R5W; thence southeasterly through Section 9-T79N-R5W to a point approximately 2536 feet southeast of the NE Corner Section 9-T79N-R5W; thence easterly, northeasterly, and southeasterly through Sections 9, 10, 11, and 12-T79N-R5W to a point on the Johnson-Cedar County line approximately 1775 feet south of the NE Corner Section 12-T79N-R5W, Johnson County (NW Corner Section 7-T79N-R4W, Cedar County).

**OFFICIAL DESCRIPTION CHANGE**

**COUNTY:** Johnson

**ROUTE:** Interstate 80

**APPROVAL DATE:** 11-28-62

Beginning at the Johnson-Iowa County line at a point approximately 218 feet north of the SW Corner Section 31-T80N-R8W, Johnson County (SE Corner Section 36-T80N-R9W, Iowa County); thence easterly following substantially the section line through Section 31 and 32-T80N-R8W to a point approximately 176 feet north of the S  $\frac{1}{4}$  Corner Section 32-T80N-R8W; thence easterly following substantially the section line through Section 32 and 33-T80N-R8W to a point approximately 1970 feet west and 20 feet north of the SE Corner Section 33-T80N-R8W; thence northeasterly through Sections 33, 34 and 35-T80N-R8W to a point approximately 500 feet west and 20 feet north of the E  $\frac{1}{4}$  Corner Section 35-T80N-R8W; thence easterly following substantially the quarter section line through Sections 35 and 36-T80N-R8W, Sections 31, 32 and 33-T80N-R7W to a point approximately 212 feet north of the center of Section 33-T80N-R7W; thence easterly following substantially the quarter section line through Sections 33, 34, 35 and 36-T80N-R7W to a point approximately 2633 feet south of the N  $\frac{1}{4}$  Corner Section 36-T80N-R7W; thence easterly following substantially, the quarter section line through Section 36-T80N-R7W to a point approximately 1240 feet west of the E  $\frac{1}{4}$  Corner Section 36-T80N-R7W; thence southeasterly through Section 36-T80N-R7W, Section 31, 32-T80N-R6W and Section 5-T79N-R6W to the west corporation line of the Town of Coralville connecting with an unnamed street at a point approximately 900 feet east and 110 feet south of the NW Corner Section 5-T79N-R6W.

Coralville:

Commencing on an unnamed street at the west corporation line at a point approximately 900 feet east and 110 feet south of the N  $\frac{1}{4}$  Corner Section 5-T79N-R6W; thence easterly on unnamed street through Section 5 and 4-T79N-R6W to the east corporation line at a point approximately 450 feet east and 170 feet south of the NE Corner Section 5-T79N-R6W.

Beginning again on the east corporation line of the Town of Coralville connecting with an unnamed street at a point approximately 450 feet east and 170 feet south of the NE Corner Section 5-T79N-R6W; thence easterly through Section 4-T79N-R6W to a point approximately 38 feet east and 170 feet south of the N  $\frac{1}{4}$  Corner Section 4-T79N-R6W; thence northeasterly through Section 4-T79N-R6W, Sections 33 and 34-T80N-R6W to a point approximately 306 feet east and 275 feet north of the SW Corner Section 34-T80N-R6W; thence northeasterly through Section 34-T80N-R6W to a point approximately 590 feet north of the S  $\frac{1}{4}$  Corner Section 34-T80N-R6W; thence easterly through Sections 34, 35 and 36-T80N-R6W to a point approximately 815 feet, east and 400 feet north of the SW Corner Section 36-T80N-R6W; thence easterly through Section 36-T80N-R6W to a point approximately 1885 feet west and 300 feet north of the NE Corner Section 1-T79N-R6W; thence southeasterly through Section 36-T80N-R6W, Section 1-T79N-R6W, Sections 6 and 5-T79N-R5W to approximately the SE Corner Section 5-T79N-R5W; thence southeasterly through Section 9-T79N-R5W to a point approximately 2536 feet southeast of the NE Corner Section 9-T79N-R5W; thence easterly, northeasterly and southeasterly through Sections 9, 10, 11 and 12 to a point on the Johnson-Cedar County line approximately 1775 feet south of the NE Corner Section 12-T79N-R5W, Johnson County (NW Corner Section 7-T79N-R4W, Cedar County).