

OFFICIAL DESCRIPTION CHANGE

OFFICE: Research and Analytics

EFFECTIVE DATE: 08-23-2019

COUNTY: Dallas

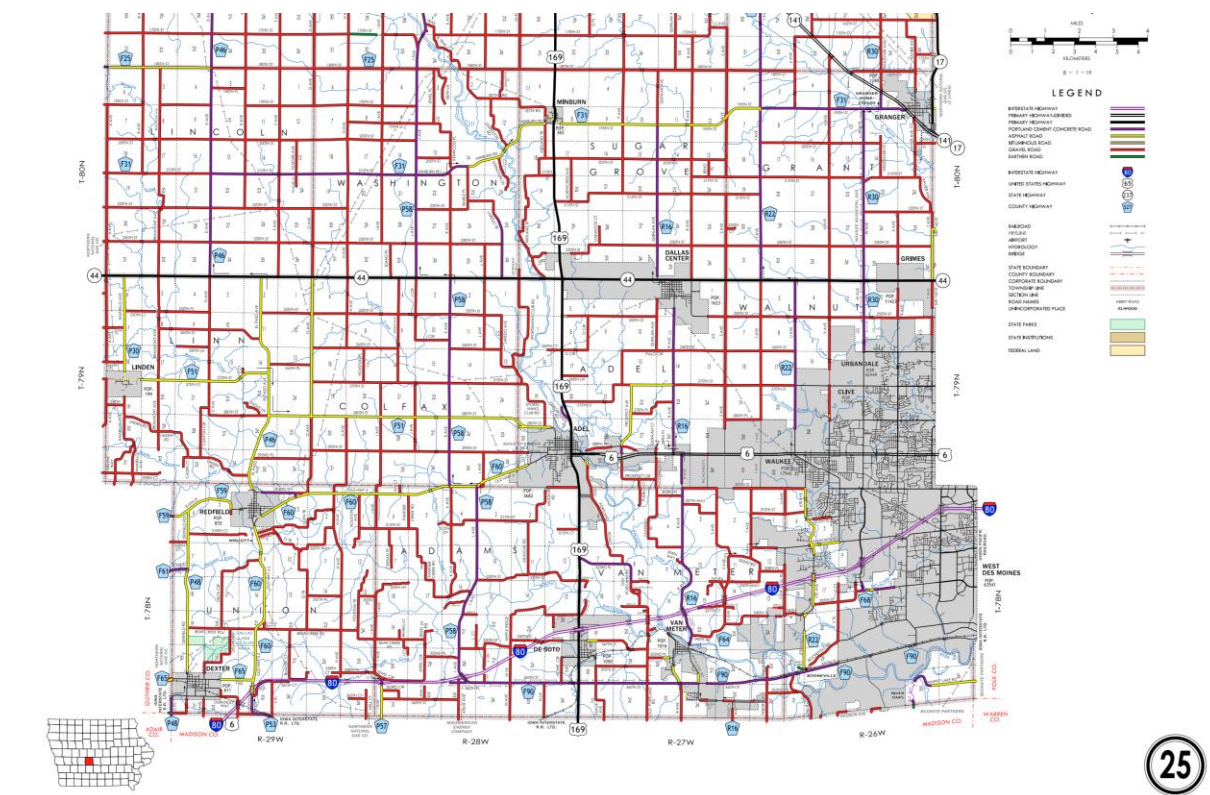
ROUTE: Interstate 80

ENTERED BY: Paul Mauer

ENTERED DATE: 08-14-2020

DISCUSSION/BACKGROUND:

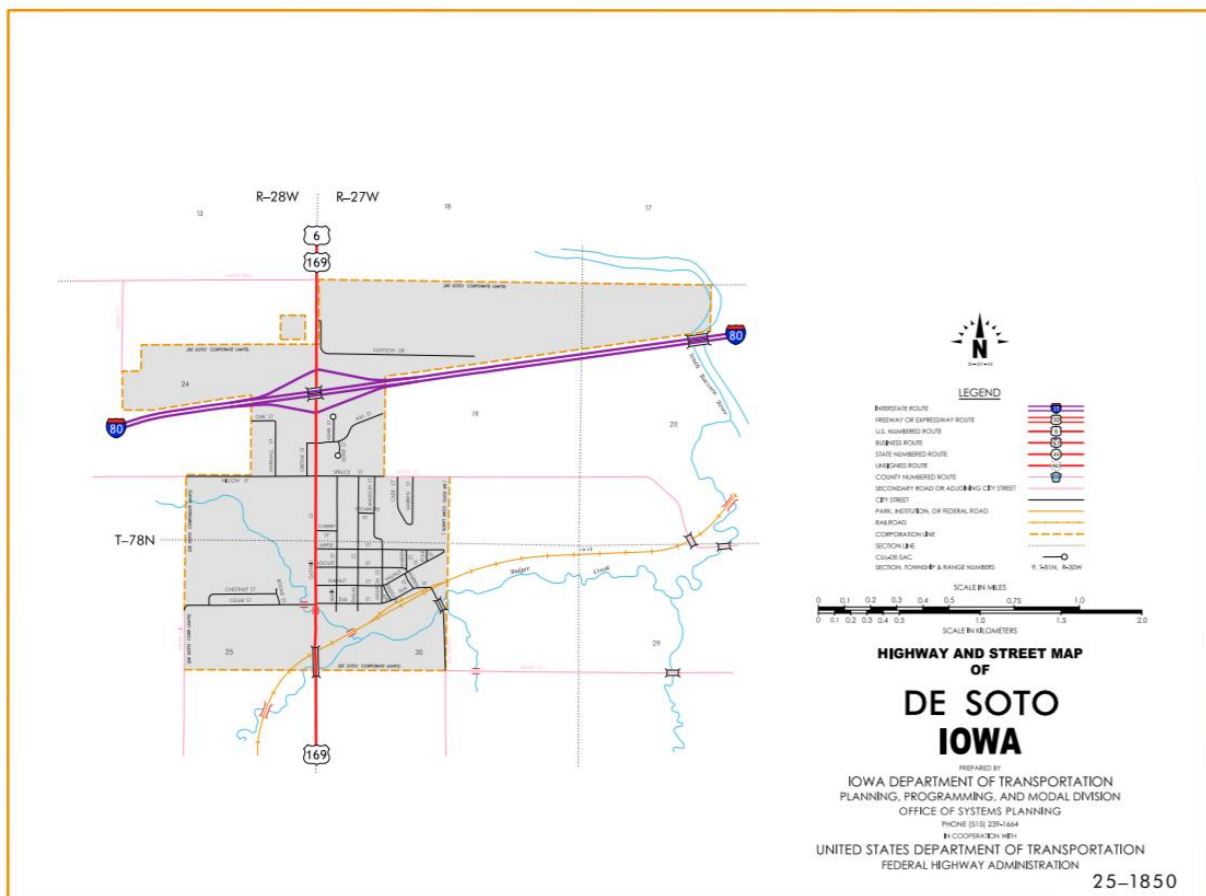
Due to an annexation by the City of Waukee effective August 23, 2019, the primary route description for Interstate 80 in Dallas County was re-written to reflect these changes.



PROPOSAL/ACTION RECOMMENDATION:

New Description – Interstate 80 and its extensions in Dallas County described as follows:

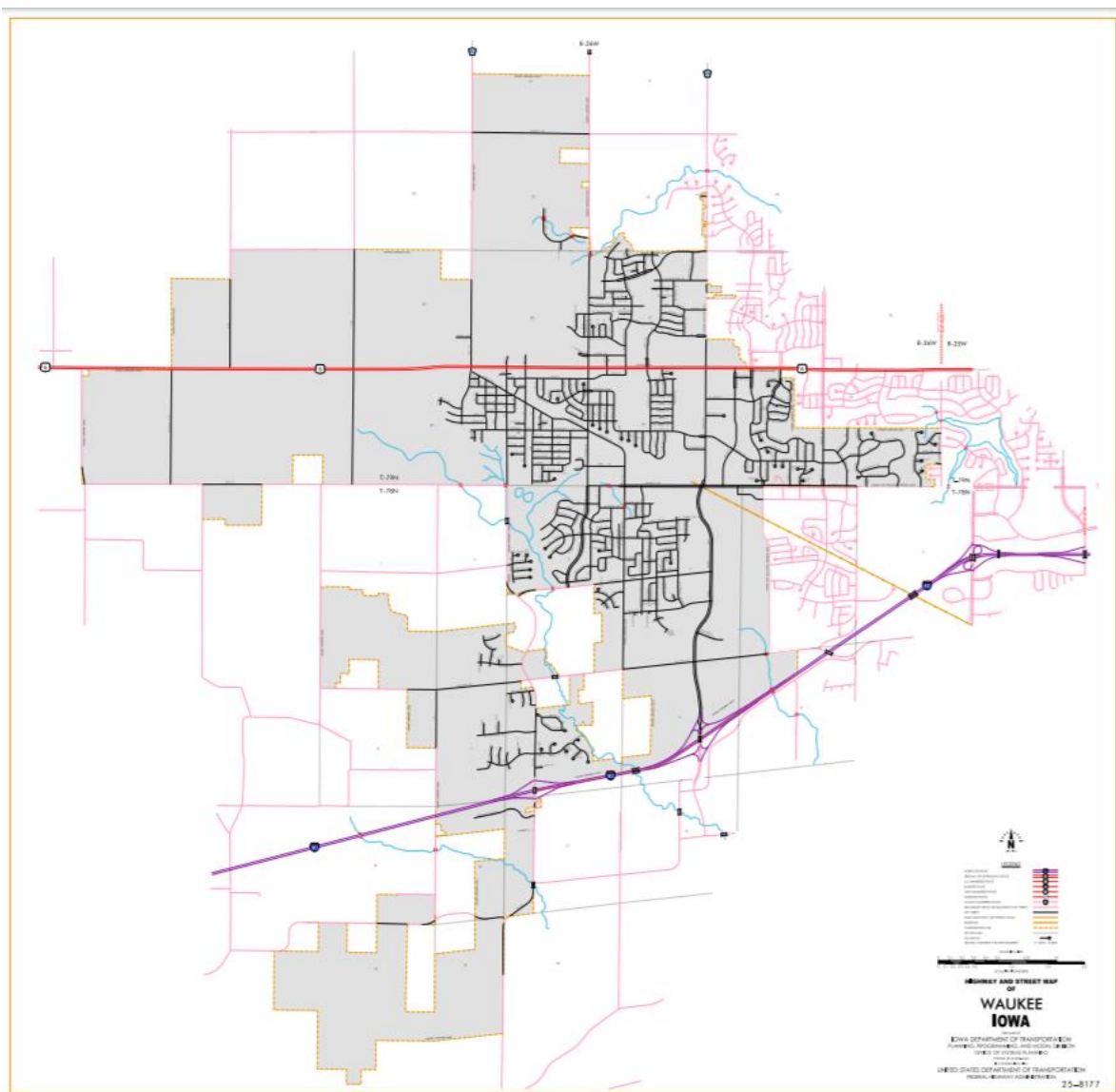
Beginning on the Dallas–Madison County line at a point approximately 1704 feet west of the SE Corner of Section 32–T78N–R29W, Dallas County (NE Corner of Section 5–T77N–R29W, Madison County); thence northeasterly through Sections 32 and 33–T73N–R29W to a point approximately 2612 feet east and 127 feet south of the N $\frac{1}{4}$ Corner of Section 33–T73N–R29W; thence easterly following substantially the section line of Sections 33, 34, 35, and 36–T78N–R29W and Sections 31 and 32–T78N–R28W to a point approximately 1094 feet west of the NE Corner of said Section 32; thence northeasterly through Sections 29, 28, 27, 26, 23, and 24–T78N–R28W to the west corporation line of De Soto (approximately 1869 feet east and 159 feet north of the Center of said Section 24).



De Soto:

Beginning at the west corporation line; thence northeasterly to the east corporation line (approximately 2096 feet south and 1980 feet east of the NW Corner Section 19-T78N-R27W).

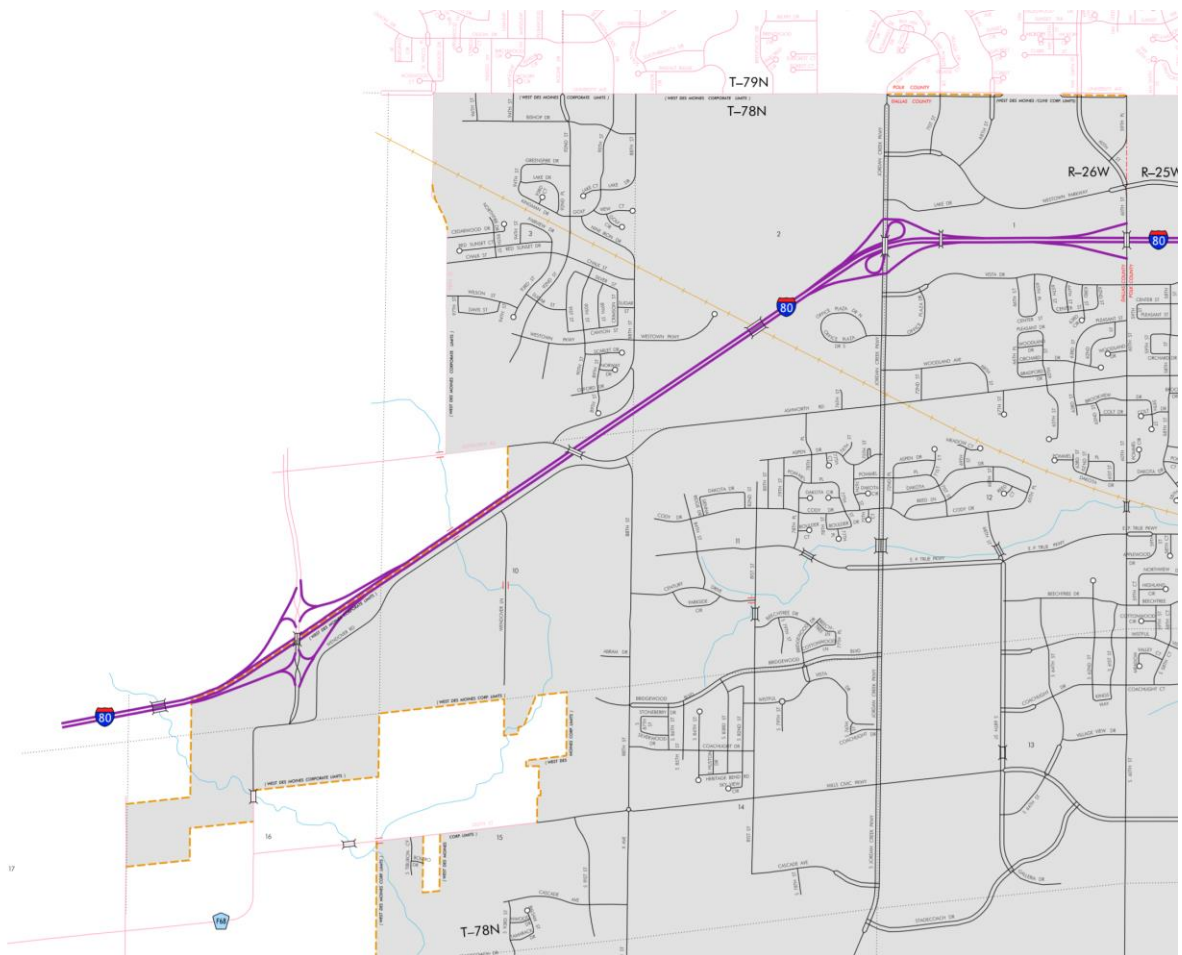
Beginning again on the east corporation line of De Soto; thence continuing northeasterly through Sections 19, 20, 21, 16, 15, 14, and 13-T78N-R27W to the west corporation line of Waukee (approximately 468 feet south of the NW Corner of Section 18-T78N-R26W).



Waukee:

Beginning at the west corporation line thence northeasterly to the east corporation line (approximately 60 feet northwest of the NE Corner of Section 18-T78N-R26W).

Beginning again at the west corporation line of the of Waukee thence northeasterly and easterly through Sections 8 and 9-T78N-R26W to the west corporation line of West Des Moines (approximately 1560 feet northeast of the SW Corner of Section 9-T78N-R26W).



West Des Moines:

Beginning at the west corporation line; thence northeasterly and easterly to the junction of 60th Street at the Dallas-Polk County Line (approximately E ¼ Corner Section 1-T78N-R26W, Dallas County (W ¼ Corner of Section 6-T78N-R25W, Polk County).

OFFICIAL DESCRIPTION CHANGE

OFFICE: Research and Analytics

EFFECTIVE DATE: 11-06-2017

COUNTY: Dallas

ROUTE: Interstate 80

ENTERED BY: Paul Mauer

ENTERED DATE: 10-29-2019

DISCUSSION/BACKGROUND:

Due to an annexation by the City of Waukee effective November 6, 2017, the primary route description for Interstate 80 in Dallas County was re-written to reflect these changes.

De Soto:

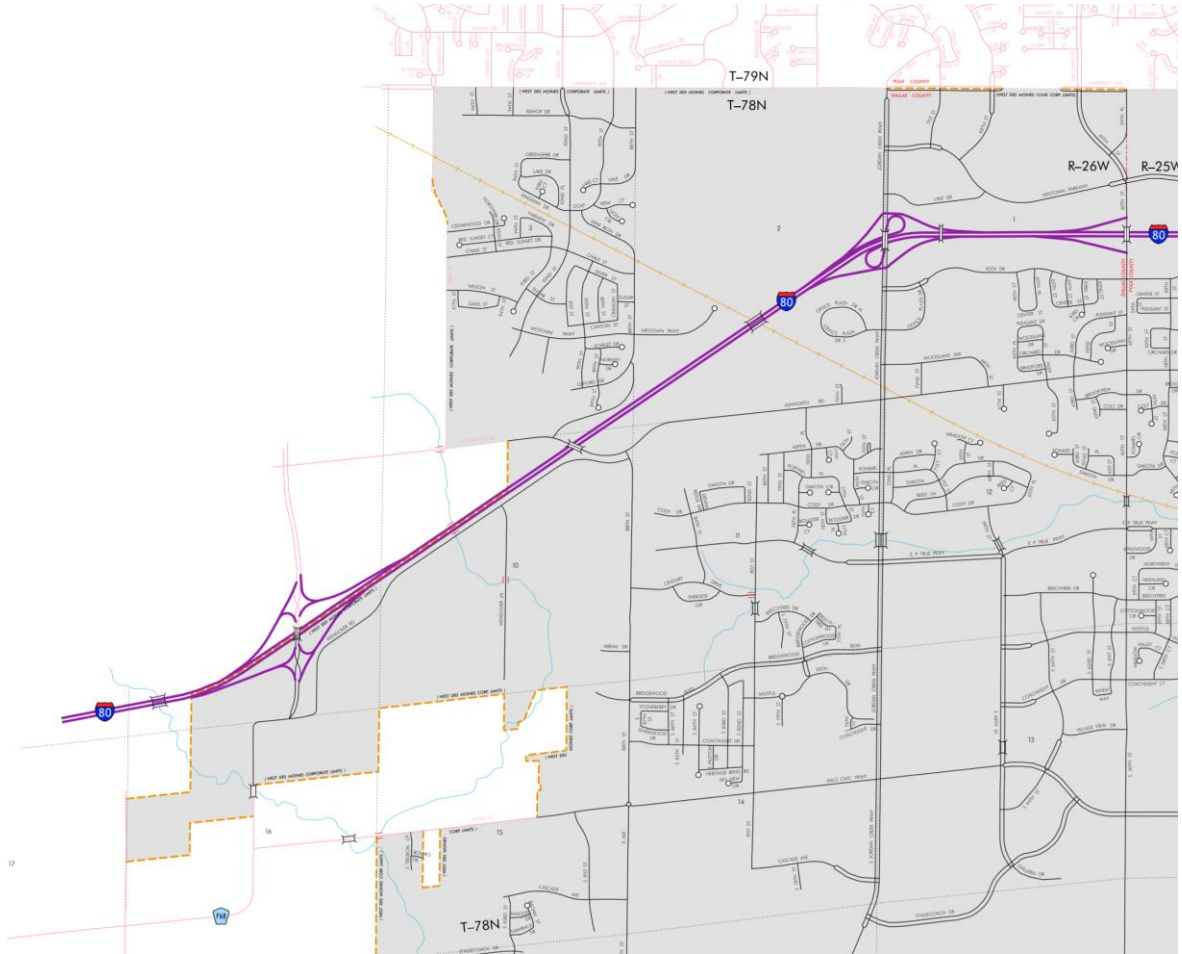
Beginning at the west corporation line; thence northeasterly to the east corporation line (approximately 2096 feet south and 1980 feet east of the NW Corner Section 19-T78N-R27W).

Beginning again on the east corporation line of De Soto; thence continuing northeasterly through Sections 19, 20, 21, 16, 15, 14, and 13-T78N-R27W to the west corporation line of Waukee (approximately 468 feet south of the NW Corner of Section 18-T78N-R26W).

Waukee:

Beginning at the west corporation line thence northeasterly to the east corporation line (approximately 60 feet northwest of the NE Corner of Section 18-T78N-R26W).

Beginning again at the west corporation line of the of Waukee thence northeasterly and easterly through Sections 8 and 9-T78N-R26W to the west corporation line of West Des Moines (approximately 1560 feet northeast of the SW Corner of Section 9-T78N-R26W).



West Des Moines:

Beginning at the west corporation line; thence northeasterly and easterly to the junction of 60th Street at the Dallas-Polk County Line (approximately E $\frac{1}{4}$ Corner Section 1-T78N-R26W, Dallas County (W $\frac{1}{4}$ Corner of Section 6-T78N-R25W, Polk County).

OFFICIAL DESCRIPTION CHANGE

OFFICE: Transportation Data

ENTERED BY: Stefani Wonders
ENTERED DATE: 09-14-2006

DISCUSSION/BACKGROUND:

Due to a review of our Primary System records, the primary route description for Interstate 80 in Dallas County was found to be in slight error and therefore was re-written.

PROPOSAL/ACTION RECOMMENDATION:

New Description – Interstate 80 and its extensions in Dallas County described as follows:

Beginning on the Dallas–Madison County line at a point approximately 1704 feet west of the SE Corner of Section 32–T78N–R29W, Dallas County (NE Corner of Section 5–T77N–R29W, Madison County); thence northeasterly through Sections 32 and 33–T73N–R29W to a point approximately 2612 feet east and 127 feet south of the N $\frac{1}{4}$ Corner of Section 33–T73N–R29W; thence easterly following substantially the section line of Sections 33, 34, 35, and 36–T78N–R29W and Sections 31 and 32–T78N–R28W to a point approximately 1094 feet west of the NE Corner of said Section 32; thence northeasterly through Sections 29, 28, 27, 26, 23, and 24–T78N–R28W to the west corporation line of De Soto connecting with an unnamed street (approximately 1869 feet east and 159 feet north of the Center of said Section 24).

De Soto:

Beginning on an unnamed street at the west corporation line; thence northeasterly on said unnamed street to the east corporation line (approximately 2096 feet south and 1980 feet east of the NW Corner Section 19–T78N–R27W).

Beginning again on the east corporation line of De Soto connecting with an unnamed street; thence continuing northeasterly through Sections 19, 20, 21,

16, 15, 14, and 13-T78N-R27W; thence northeasterly and easterly through Sections 18, 7, and 8-T78N-R26W to the west corporation line of Waukee connecting with an unnamed street (approximately 793 feet east and 168 feet north of the SW Corner of said Section 8).

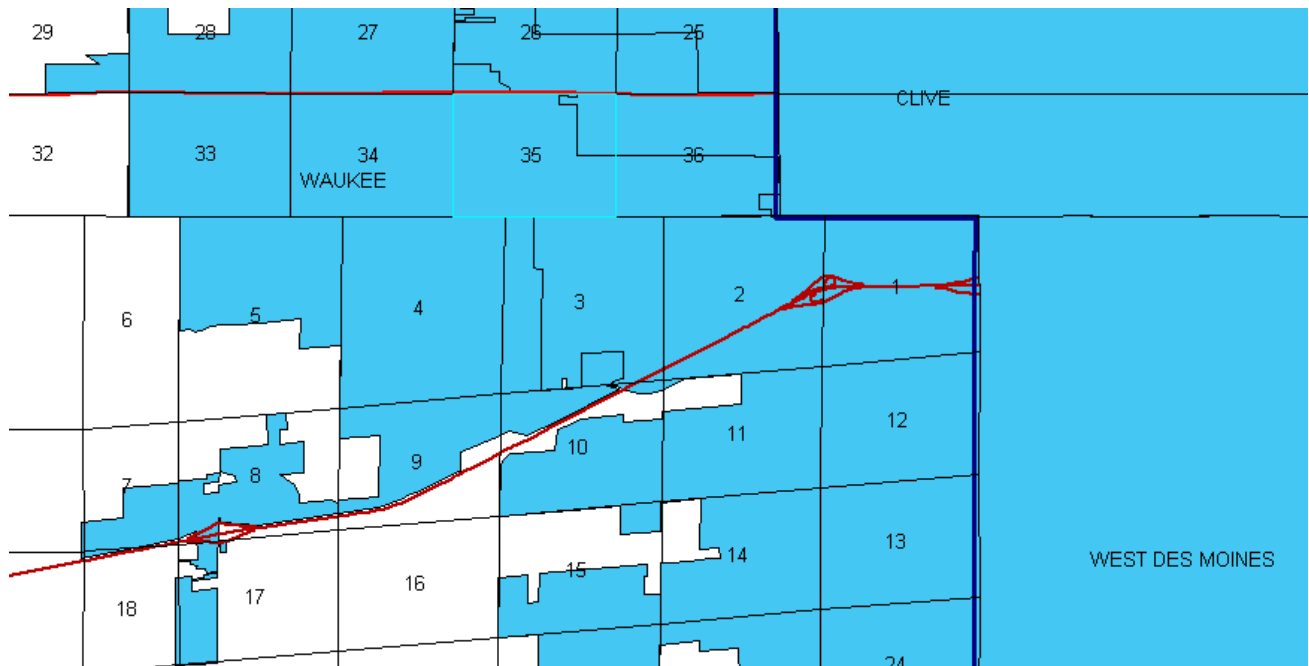
Waukee:

Beginning on an unnamed street at the west corporation line; thence northeasterly on said unnamed street to the east corporation line (approximately 1726 feet east and 264 feet north of the SW Corner Section 8-T78N-R26W).

Beginning again on the east corporation line of Waukee connecting with an unnamed street; thence northeasterly through Sections 8, 9, and 10-T78N-R26W to the south corporation line of West Des Moines connecting with an unnamed street (approximately 1638 feet west and 266 feet south of the NE Corner of said Section 10).

West Des Moines:

Beginning on an unnamed street at the south corporation line; thence northeasterly and easterly on said unnamed street to the Dallas-Polk County line (approximately E $\frac{1}{4}$ Corner Section 1-T78N-R26W, Dallas County (W $\frac{1}{4}$ Corner of Section 6-T78N-R25W, Polk County).



COMMISSION ORDER

DIVISION: Planning & Research

COMMISSION ORDER NUMBER: PR-79-272

SUBMITTED BY: C.I. MacGillivray

MEETING DATE: 11-2-78

DISCUSSION/BACKGROUND:

Due to the review of our Primary Road System records, Interstate 80 in Dallas County should be deleted from the Primary Road System and the new description added should be officially included into the Primary Road System.

Interstate 80 begins at the Dallas-Madison County line approximately 1 mile southeast of Dexter, Iowa and travels in a northeasterly direction to the Dallas-Polk County line approximately 4 miles southeast of Waukee, Iowa.

PROPOSAL/ACTION RECOMMENDATION:

Locate Interstate 80 in Dallas County as follows:

Beginning on the Dallas–Madison County line at a point approximately 1285 feet west of the SE Corner of Section 32–T78N–R29W, Dallas County (NE Corner of Section 5–T77N–R29W, Madison County); thence northeasterly through Sections 32 and 33–T73N–R29W to a point approximately 233 feet east and 1000 feet south of the N $\frac{1}{4}$ Corner of Section 33–T73N–R29W (US 6 interchange); thence curving in an easterly direction to a point near the NE Corner of Section 33–T78N–R29W; thence easterly following substantially the section line of Sections 34, 35, and 36–T78N–R29W and Sections 31, 32, and 33–T78N–R28W to a point approximately 240 feet east of the NW Corner Section 33–T78N–R28W; thence northeasterly through Sections 28, 27, 26, 23, and 24–T78N–R28W (US 169 interchange), and continuing northeasterly through Sections 19, 20, 21, 16, 15, 14, and 13–T78N–R27W; thence northeasterly and easterly through Sections 18, 7, 8, 9, 10, 3, 2, and 1–T78N–R26W to the Dallas–Polk County line at a point approximately 100 feet north of the E $\frac{1}{4}$ Corner of Section 1–T78N–R26W, Dallas County (W $\frac{1}{4}$ Corner of Section 6–T78N–R25W, Polk County).

NOW, THEREFORE: Be it resolved that the Iowa Department of Transportation approve the location of Interstate 80 in Dallas County, Iowa.

NOTE: To become effective upon adoption of this resolution.

COMMISSION ORDER

DIVISION: Planning & Research

SUBMITTED BY: Raymond L. Kassel

MEETING DATE: 9–21–76

DISCUSSION/BACKGROUND:

Due to the review of our Primary Road System records, Interstate 80 in Dallas County should be deleted from the Primary Road System and the new description added should be officially included into the Primary Road System.

Interstate 80 begins at the Dallas–Madison County line approximately 1 mile southeast of Dexter, Iowa and travels in a northeasterly direction to the Dallas–Polk County line approximately 4 miles southeast of Waukee, Iowa.

PROPOSAL/ACTION RECOMMENDATION:

Locate Interstate 80 in Dallas County as follows:

Beginning on the Dallas–Madison County line at a point approximately 1285 feet west of the SE Corner of Section 32–T78N–R29W, Dallas County (NE Corner of Section 5–T77N–R29W, Madison County); thence northeasterly through Sections 32 and 33–T78N–R29W to a point approximately 233 feet east and 1000 feet south of the N $\frac{1}{4}$ Corner of Section 33–T78N–R29W (US 6 interchange); thence curving in an easterly direction to a point near the NE Corner of Section 33–T78N–R29W; thence easterly following substantially the section line of Sections 34, 35, and 36–T78N–R29W and Sections 31, 32, and 33–T78N–R28W to a point approximately 240 feet east of the NW Corner Section 33–T78N–R28W; thence northeasterly through Sections 28, (Iowa 90 interchange), 27, 26, 23, and 24–T78N–R28W (US 169 interchange), and continuing northeasterly through Sections 19, 20, 21, 16, 15, 14, and 13–T78N–R27W; thence northeasterly and easterly through Sections 18, 7, 8, 9, 10, 3, 2, and 1–T78N–R26W to the Dallas–Polk County line at a point approximately 100 feet north of the E $\frac{1}{4}$ Corner of Section 1–T78N–R26W, Dallas County (W $\frac{1}{4}$ Corner of Section 6–T78NR25W, Polk County).

NOW, THEREFORE: Be it resolved that the Iowa Department of Transportation approve the location of Interstate 80 in Dallas County, Iowa.

NOTE: To become effective upon adoption of this resolution.

OFFICIAL DESCRIPTION CHANGE

COUNTY: Dallas

ROUTE: Interstate 80

APPROVAL DATE: 1-29-64

Beginning on the Dallas-Madison County line at a point approximately 1285 feet west of the SE Corner of Section 32-T78N-R29W, Dallas County (NE Corner of Section 5-T77N-R29W, Madison County); thence northeasterly through Sections 32 and 33-T78N-R29W to a point approximately 233 feet east and 1000 feet south of the N $\frac{1}{4}$ Corner of Section 33-T78N-R29W; thence curving in an easterly direction to a point 14 feet north of the NE Corner of Section 33-T78N-R29W; thence east following substantially the section line to a point approximately 240 feet east of the NW Corner of Section 33-T78N-R28W; thence northeasterly through Sections 28, 27, 26, 23 and 24-T78N-R28W, and continuing northeasterly through Sections 19, 20, 21, 16, 15, 14 and 13-T78N-R27W; thence northeasterly and easterly through Sections 18, 7, 8, 9, 10, 3, 2 and 1-T78N-R26W to the Dallas-Polk County line at a point approximately 100 feet north of the E $\frac{1}{4}$ Corner of Section 1-T78N-R26W, Dallas County (W $\frac{1}{4}$ Corner of Section 6-T78N-R25W, Polk County).