

OFFICIAL DESCRIPTION CHANGE

OFFICE: Transportation Data

ENTERED BY: Stefani Wonders

ENTERED DATE: 09-14-2006

DISCUSSION/BACKGROUND:

Due to a review of our Primary System records, the primary route description for Interstate 80 in Adair County was found to be in slight error and therefore was re-written.

PROPOSAL/ACTION RECOMMENDATION:

New Description – Interstate 80 and its extensions in Adair County described as follows:

Beginning on the Adair-Cass County line at a point near the W $\frac{1}{4}$ Corner Section 6-T77N-R33W, Adair County (E $\frac{1}{4}$ Corner Section 1-T77N-R34W, Cass County); thence easterly and southeasterly through Section 6-T77N-R33W; thence southeasterly and easterly through Section 5-T77N-R33W to a point 1298 feet north of the SE Corner of said Section 5; thence easterly following substantially the south quarter section line Section 4-T77N-R33W to the west corporation line of the City of Adair connecting with an unnamed street (approximately 1298 feet north and 1770 feet east of the SW Corner of said Section 4).

Adair:

Beginning on an unnamed street at the west corporation line; thence easterly on said unnamed street to the east corporation line (approximately 1277 feet north and 1740 feet west of the SE Corner Section 3-T77N-R33W).

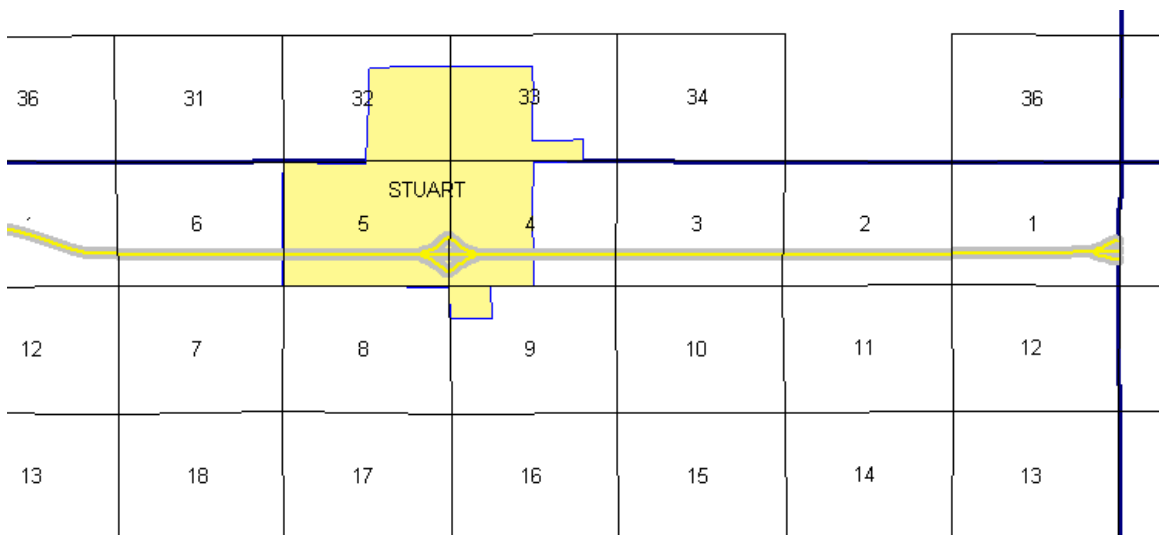
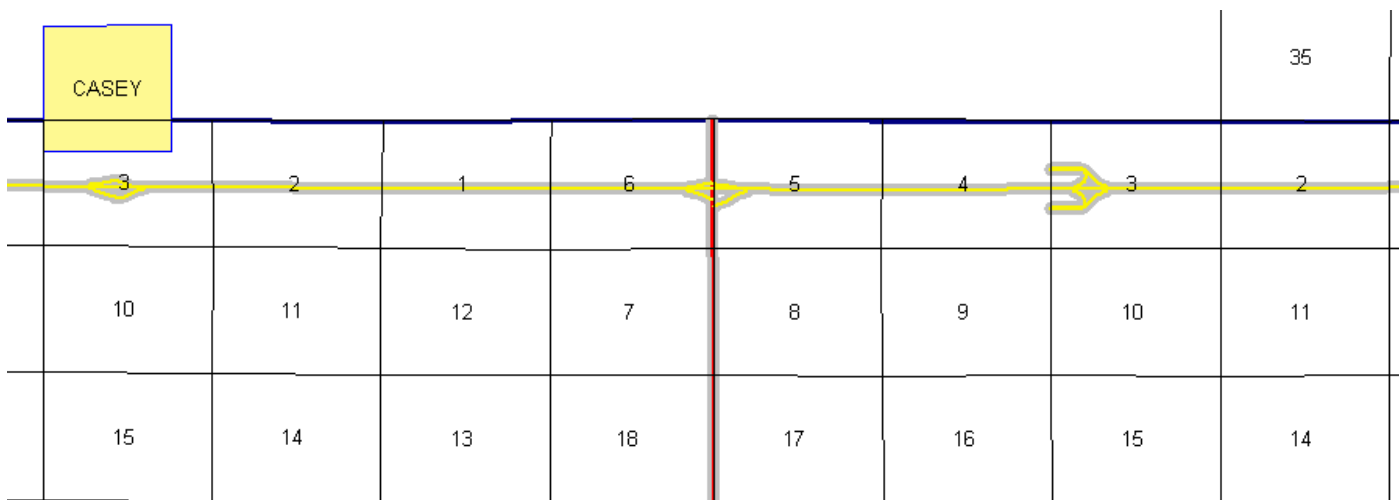
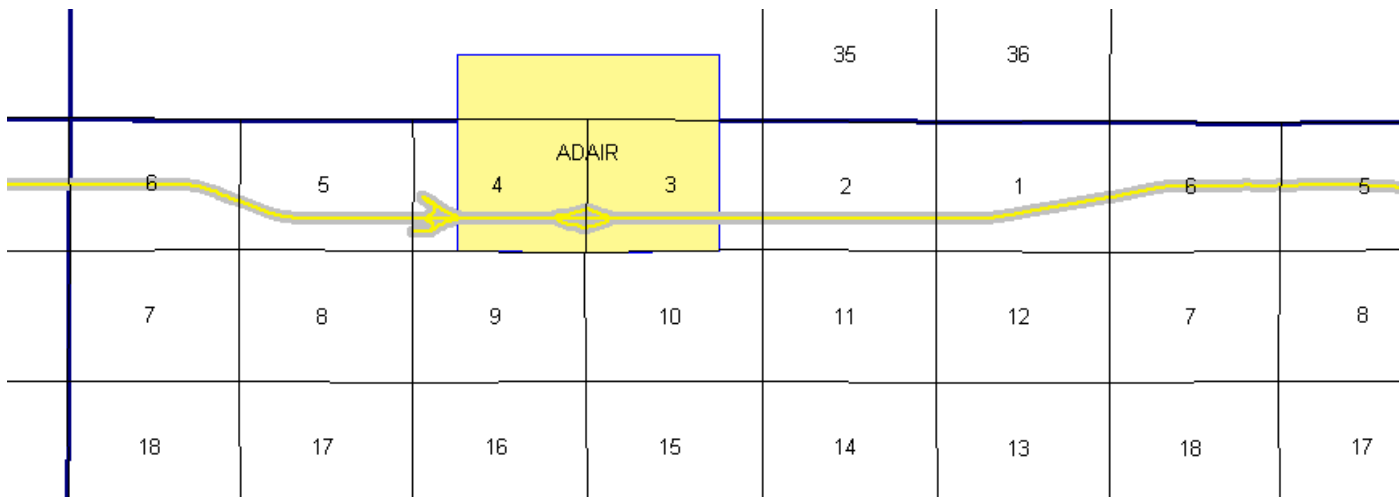
Beginning again on the east corporation line of the City of Adair connecting with an unnamed street; thence easterly following

substantially the south quarter section line through Sections 3 and 2-T77N-R33W to a point 1306 feet north of the SE Corner Section 2-T77N-R33W; thence easterly and northeasterly through Section 1-T77N-R33W; thence northeasterly and easterly through Section 6-T77N-R32W to a point 33 feet south of the E $\frac{1}{4}$ Corner of said Section 6; thence easterly following approximately the center section line through Sections 5, 4, 3, 2 and 1-T77N-R32W and Sections 6 (junction Iowa 25), 5, 4, 3 and 2-T77N-R31W to a point near the E $\frac{1}{4}$ Corner Section 2-T77N-R31W; thence easterly, southeasterly and easterly through Section 1-T77N-R31W to a point 1335 feet north of the SE Corner of said Section 1; thence easterly following approximately the south quarter section line through Sections 6 and 5-T77N-R30W to the west corporation line of the City of Stuart connecting with an unnamed street (approximately 1326 feet north of the SW Corner said Section 5).

Stuart:

Beginning on an unnamed street at the west corporation line; thence easterly on said unnamed street to the east corporation line (approximately 1314 feet north of the S $\frac{1}{4}$ Corner Section 4-T77N-R30W).

Beginning again on the east corporation line of the City of Stuart connecting with an unnamed street; thence easterly following substantially the south quarter section line of Sections 4, 3, 2 and 1-T77N-R30W to the Adair-Madison county line at a point 1428 feet north of the SE Corner Section 1-T77N-R30W, Adair County (SW Corner Section 6-T77N-R29W, Madison County).



COMMISSION ORDER

DIVISION: Planning & Research

COMMISSION ORDER NUMBER: PR-81-677

SUBMITTED BY: Patrick R. Cain

MEETING DATE: 2-28-81

DISCUSSION/BACKGROUND:

Due to a review of our primary road system records, Interstate 80 in Adair County should be deleted and the new description added should be officially included in the primary road system.

Interstate 80 begins at the Adair-Cass County line approximately three miles west of the City of Adair and proceeds easterly via the cities of Adair and Stuart to the Adair-Madison County line approximately four miles east of the City of Stuart.

PROPOSAL/ACTION RECOMMENDATION:

It is recommended the commission approve deleting the present description of Interstate 80 in Adair County from the primary road system and approve including the attached new description of Interstate 80 in the primary road system.

Locate Interstate 80 and its extensions in Adair County as follows:

Beginning on the Adair-Cass county line at a point 15 feet south of the W ¼ Corner Section 6-T77N-R33W, Adair County (E ¼ Corner Section 1-T77N-R34W, Cass County); thence easterly and southeasterly through Section 6-T77N-R33W, and-southeasterly and easterly through Section 5-T77N-R33W to a point 1298 feet north of the SE Corner of said Section 5; thence east following substantially the south quarter section line

Section 4-T77N-R33W to the west corporation line of the City of Adair connecting with an unnamed street.

Adair:

Beginning at the west corporation line, connecting with an unnamed street; thence easterly to the east corporation line connecting with an unnamed street.

Beginning again on the east corporation line of the City of Adair connecting with an unnamed street; thence east following substantially the south quarter section line through Sections 3 and 2-T77N-R33W to a point 1306 feet north of the SE Corner Section 2-T77N-R33W; thence easterly and northeasterly through Section 1-T77N-R33W, and northeasterly and easterly through Section 6-T77N-R32W to a point 33 feet south of the E $\frac{1}{4}$ Corner of said Section 6; thence easterly following approximately the center section line through Sections 5, 4, 3, 2 and 1-T77N-R32W; thence Sections 6 (junction Iowa 25), 5, 4, 3 and 2-T77N-R31W to a point 197 feet south of the E $\frac{1}{4}$ Corner Section 2-T77N-R31W; thence easterly, southeasterly and easterly through Section 1-T77N-R31W to a point 1335 feet north of the SE Corner of said Section 1; thence easterly following approximately the south quarter section line through Sections 6 and 5-T77N-R30W to the west corporation line of the City of Stuart connecting with an unnamed street.

Stuart:

Beginning on the west corporation line connecting with an unnamed street; thence easterly to the east corporation line connecting with an unnamed street.

Beginning again on the east corporation line of the City of Stuart connecting with an unnamed street; thence easterly following substantially the south quarter section line of Sections 4, 3, 2 and 1-T77N-R30W to the Adair-Madison county line at a point 1428 feet

north of the SE Corner Section 1–T77N–R30W, Adair County (SW Corner Section 6–T77N–R29W, Madison County).

COMMISSION ORDER

DIVISION: Planning & Research

COMMISSION ORDER NUMBER: PR–79–272

SUBMITTED BY: C.I. MacGillivray

MEETING DATE: 11–2–78

DISCUSSION/BACKGROUND:

Due to a review of our Primary Road System records, Interstate 80 in Adair County should be deleted and the new description added should be officially included into the Primary Road System.

Interstate 80 begins at the Adair–Cass County line approximately 2 ¼ miles west of Adair and travels in an easterly direction to the Adair–Madison County line approximately 4 miles southeast of Stuart, Iowa, via the City of Adair, Iowa.

PROPOSAL/ACTION RECOMMENDATION:

Locate Interstate 80 and its extension in Adair County as follows:

Beginning on the Adair–Cass County line at a point 15 feet south of the W ¼ Corner Section 6–T77N–R33W, Adair County (E ¼ Corner Section 1–T77N–R34W, Cass County); thence easterly and southeasterly through Section 6–T77N–R33W, and southeasterly and easterly through Section 5–T77N–R33W to a point 1298 feet north of the SE Corner of said Section 5; thence east following substantially the south quarter section line through Section 4–T17N–R33W to the west corporation line of the City of Adair connecting with an unnamed street.

Adair:

Beginning at the west corporation line, connecting with an unnamed street; thence easterly to the east corporation line connecting with an unnamed street.

Beginning again on the east corporation line of the City of Adair connecting with an unnamed street; thence east following substantially the south quarter section line through Sections 3 and 2-T77N-R33W to a point 1306 feet north of the SE Corner Section 2-T77N-R33W; thence easterly and northeasterly through Section 1-T77N-R33W, and northeasterly and easterly through Section 6-T77N-R32W to a point 33 feet south of the E $\frac{1}{4}$ Corner of said Section 6; thence easterly following approximately the center section line through Sections 5, 4, 3, 2, and 1-T77N-R32W; thence Sections 6 (junction Iowa 25), 5, 4, and 3-T77N-R31W to a point 197 feet south of the E $\frac{1}{4}$ Corner Section 2-T77N-R31W; thence easterly, southeasterly, and easterly through Section 1-T77N-R31W to a point 1335 feet north of the SE Corner of said Section 1; thence easterly following approximately the south quarter section line through Sections 6, 5, 4, 3, 2, and 1-T77N-R30W to the Adair-Madison County line at a point 1428 feet north of the SE Corner Section 1-T77N-R30W, Adair County (SW Corner Section 6-T77N-R29W, Madison County).

NOW, THEREFORE: Be it resolved that the Iowa Department of Transportation approve the location of Interstate 80 in Adair County, Iowa.

NOTE: To become effective upon the adoption of this resolution.

REVISED: 4-28-81

COMMISSION ORDER

DIVISION: Planning & Research

SUBMITTED BY: Raymond L. Kassel

MEETING DATE: 8-24-76

DISCUSSION/BACKGROUND:

Due to a review of our Primary Road System records, Interstate 80 in Adair County should be deleted and the new description added should be officially included into the Primary Road System.

Interstate 80 begins at the Adair-Cass County line approximately 2 ¼ miles west of Adair and travels in an easterly direction to the Adair-Madison County line approximately 4 miles southeast of Stuart, Iowa, via the City of Adair, Iowa.

PROPOSAL/ACTION RECOMMENDATION:

Locate Interstate 80 and its extension in Adair County as follows:

Beginning on the Adair-Cass County line at a point 15 feet south of the W ¼ Corner Section 6-T77N-R33W, Adair County (E ¼ Corner Section 1-T77N-R34W, Cass County); thence easterly and southeasterly through Section 6-T77N-R33W, and southeasterly and easterly through Section 5-T77N-R33W to a point 1298 feet north of the SE Corner of said Section 5; thence east following substantially the south quarter section line through Section 4-T17N-R33W to the west corporation line of the City of Adair connecting with an unnamed street.

Adair:

Beginning at the west corporation line, connecting with an unnamed street; thence easterly to the east corporation line connecting with an unnamed street.

Beginning again on the east corporation line of the City of Adair connecting with an unnamed street; thence east following substantially the south quarter section line through Sections 3 and 2-T77N-R33W to a point 1306 feet north of the SE Corner Section 2-T77N-R33W; thence easterly and northeasterly through Section 1-T77N-R33W, and northeasterly and easterly through Section 6-T77N-R32W to a point 33 feet south of the E $\frac{1}{4}$ Corner of said Section 6; thence easterly following approximately the center section line through Sections 5, 4, 3, 2, and 1-T77N-R32W; thence Sections 6 (junction Iowa 25), 5, 4, and 3-T77N-R31W to a point 197 feet south of the E $\frac{1}{4}$ Corner Section 2-T77N-R31W; thence easterly, southeasterly and easterly through Section 1-T77N-R31W to a point 1335 feet north of the SE Corner of said Section 1; thence easterly following approximately the south quarter section line through Sections 6, 5, 4, 3, 2, and 1-T77N-R30W to the Adair-Madison County line at a point 1428 feet north of the SE Corner Section 1-T77N-R30W, Adair County (SW Corner Section 6-T77N-R29W, Madison County).

NOW, THEREFORE: Be it resolved that the Iowa Department of Transportation approve the location of Interstate 80 in Adair County, Iowa.

NOTE: To become effective upon the adoption of this resolution.

COMMISSION RESOLUTION

DIVISION: Planning & Research

COMMISSION ORDER NUMBER: 74-776

SUBMITTED BY: Gene R. Mills

MEETING DATE: 6-26-74

Locate Interstate 80 and its extension in Adair County as follows:

Beginning on the Adair-Cass County line at a point 15 feet south of the W $\frac{1}{4}$ Corner Section 6-T77N-R33W, Adair County (E $\frac{1}{4}$ Corner Section 1-T77N-R34W, Cass County); thence easterly and southeasterly through Section 6-T77N-R33W, and southeasterly and easterly through Section 5-T77N-R33W to a point 1298 feet north of the SE Corner of said Section 5; thence east following substantially the quarter-quarter section line to the west corporation line of the Town of Adair connecting with an unnamed street.

Adair:

Commencing on an unnamed street (Interstate 80) at the west corporation line; thence east on unnamed street (Interstate 80) to the east corporation line.

Beginning again on the east corporation line of the Town of Adair connecting with an unnamed street; thence east following substantially the quarter-quarter section line to a point 1306 feet north of the SE Corner Section 2-T77N-R33W; thence easterly and northeasterly through Section 1-T77N-R33W, and northeasterly and easterly through Section 6-T77N-R32W to a point 33 feet south of the E $\frac{1}{4}$ Corner of said Section 6; thence easterly following approximately the quarter section line to a point 197 feet south of the E $\frac{1}{4}$ Corner Section 2-T77N-R31W; thence easterly, southeasterly, and easterly through Section 1-T77N-R31W to a point 1335 feet north of the SE Corner of said Section 1; thence easterly following approximately the quarter-quarter section line to the Adair-Madison County line at a point 1428 feet north of the SE Corner

Section 1-T77N-R30W, Adair County (SW Corner Section 6-T77N-R29W, Madison County).

NOW, THEREFORE: Be it resolved that the Iowa State Highway Commission approve the location of Interstate 80 in Adair County, Iowa.

OFFICIAL DESCRIPTION CHANGE

COUNTY: Adair

ROUTE: Interstate 80

APPROVAL DATE: 3-11-59

Beginning on the Adair-Cass County line at a point 15 feet south of the W $\frac{1}{4}$ Corner Section 6-T77N-R33W, Adair County (E $\frac{1}{4}$ Corner Section 1-T77N-R34W, Cass County): thence easterly and southeasterly thru Section 6-T77N-R33W, and southeasterly and easterly thru Section 5-T77N-R33W to a point 1298 feet north of the SE Corner of said Section 5; thence east following substantially the quarter-quarter section line to a point 1306 feet north of the SE Corner Section 2-T77N-R33W; thence easterly and northeasterly thru Section 1-T77N-R33W and northeasterly and easterly thru Section 6-T77N-R32W to a point 33 feet south of the E $\frac{1}{4}$ Corner of said Section 6; thence easterly following approximately the quarter section line to a point 197 feet south of the E $\frac{1}{4}$ Corner Section 2-T77N-R31W; thence easterly, southeasterly, and easterly thru Section 1-T77N-R31W to a point 1335 feet north of the SE Corner of said Section 1; thence easterly following approximately the quarter-quarter section line to the Adair-Madison County line at a point 1428 feet north of the SE Corner Section 1-T77N-R30W, Adair County (SW Corner Section 6-T77N-R29W, Madison County).