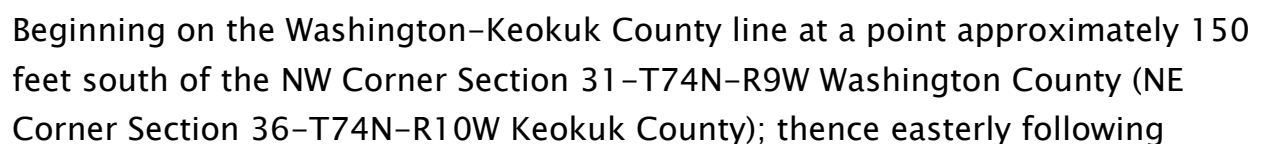
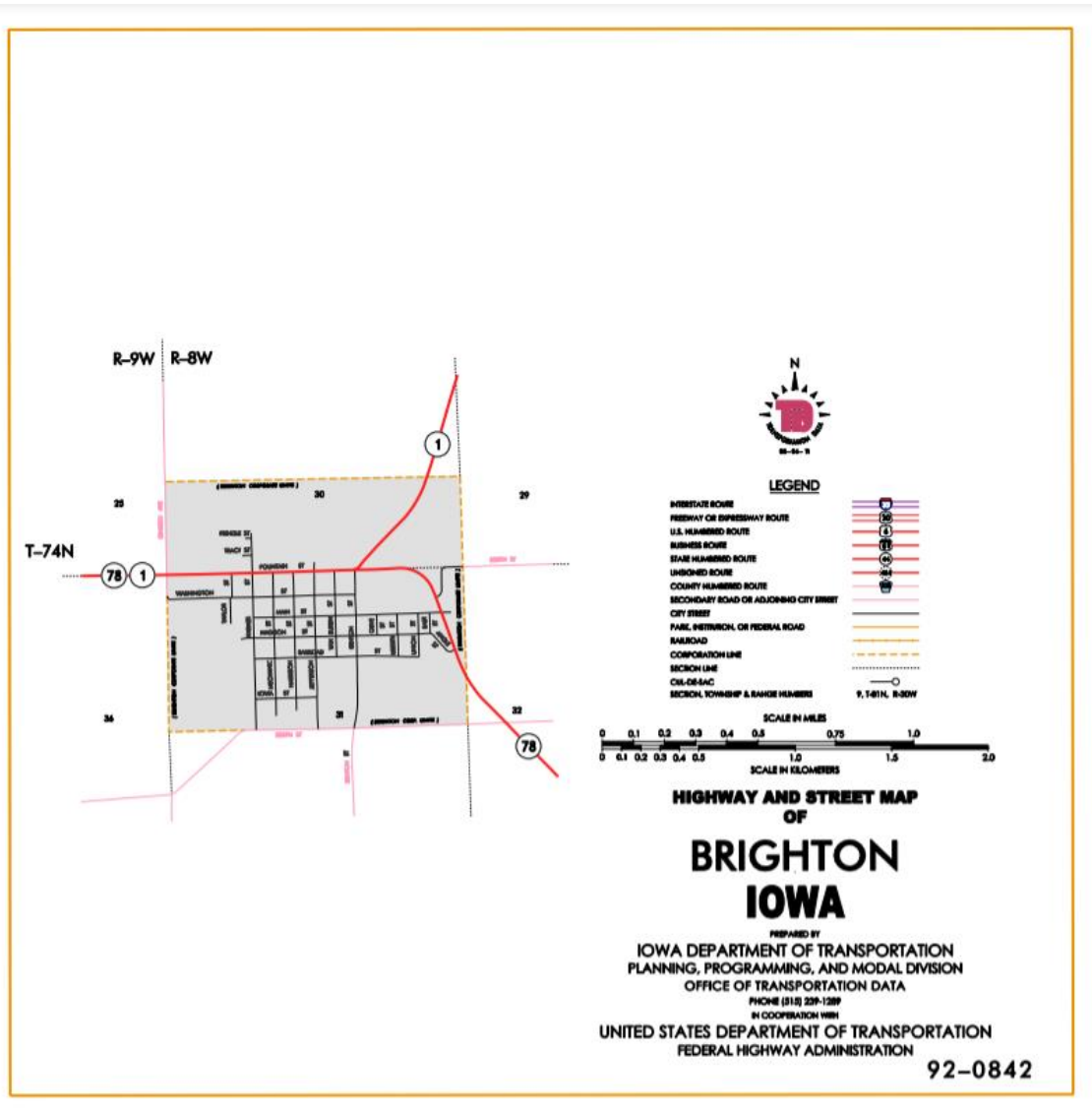


**ENTERED DATE:** 2-3-2022



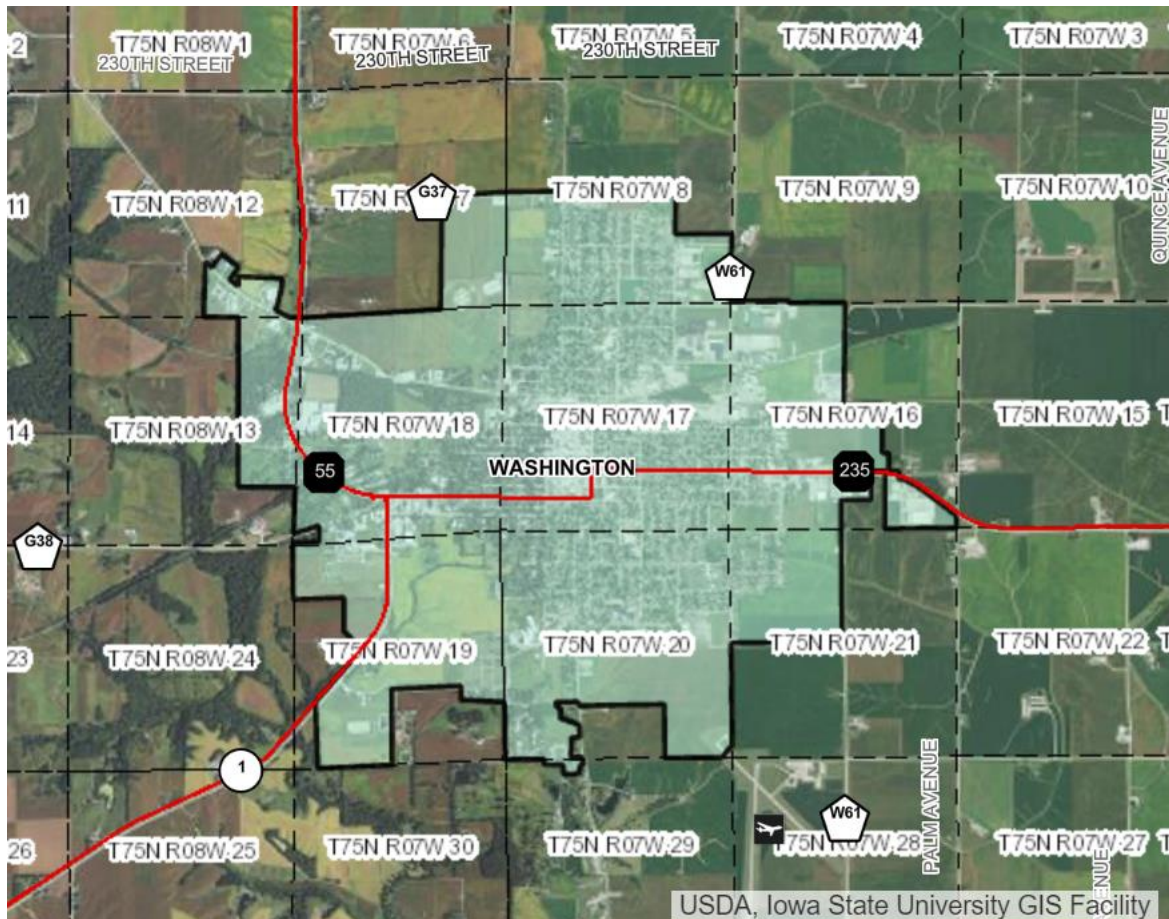
substantially the section line of Sections 31, 32, 33, 34, 35, and 36-T74N-R9W to the west corporation line of the City of Brighton connecting with Fountain Street.



Brighton:

Beginning on Fountain Street at the west corporation line; thence easterly on Fountain Street to an unnamed street; thence northeasterly on unnamed street to the north corporation line.

Beginning again on the north corporation line of the City of Brighton connecting with an unnamed street; thence in a northeasterly direction through Section 30, 29, 20, 17, 16, 9, 10, and 3–T74N–R8W, Section 34, 35, 26, 25, and 24–T75N–R8W, and Section 19–T75N–R7W to the south corporation line of Washington connecting with an unnamed street.



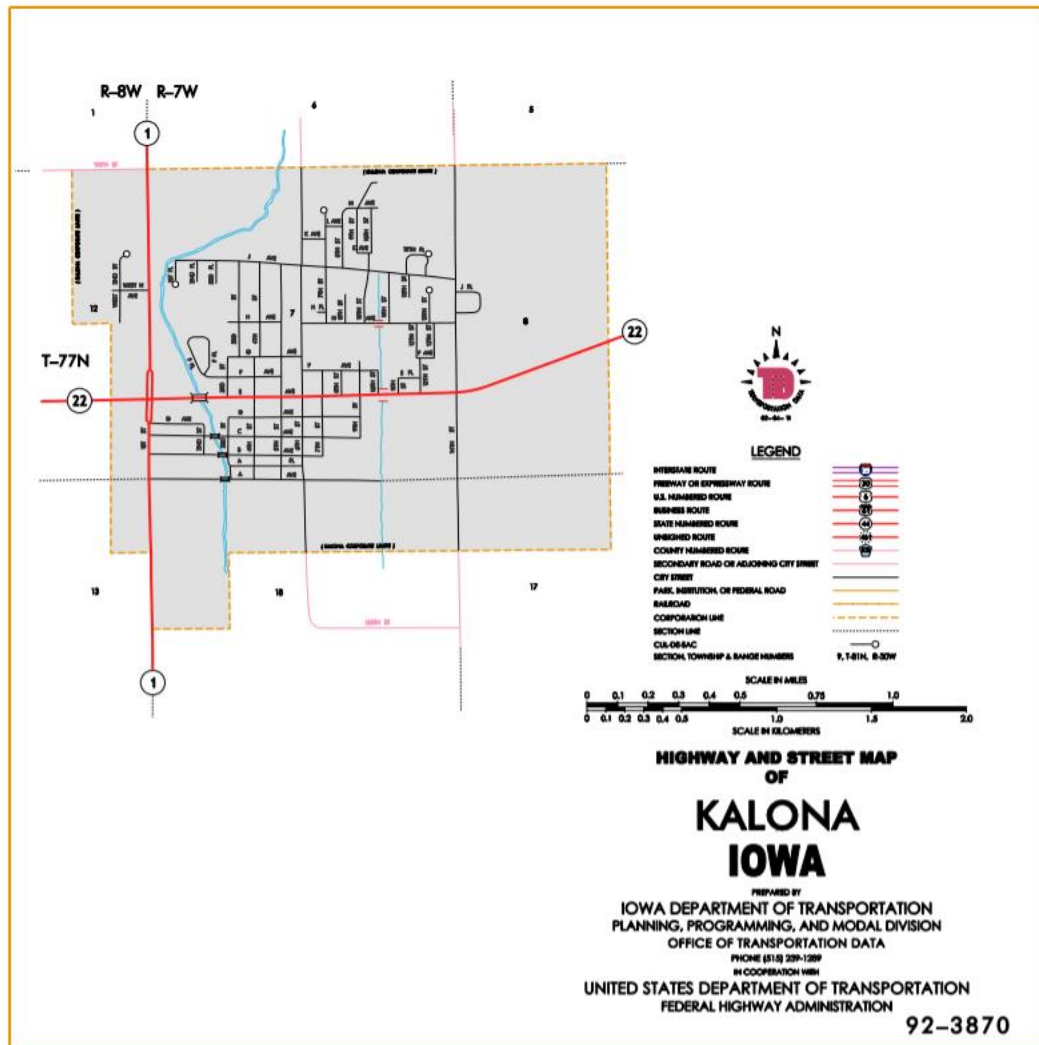
Washington:

Beginning on an unnamed street at the south corporation line; thence northerly on unnamed street to West Madison Street; thence northwesterly and northerly on the extension of West Madison Street to the north corporation line.

Beginning again on the north corporation line of the City of Washington connecting with the extension of West Madison Street; thence northerly



following substantially the section line of Sections 7 and 6-T75N-R7W (north junction Iowa 92), Section 31, 30, 19, 18, 7, and 6-T76N-R7W and Sections 31, 30, 19, and 18-T77N-R7W to the south corporation line of the City of Kalona connecting with 1st Street.



Kalona:

Beginning on 1st Street at the south corporation line; thence northerly on 1st Street to the north corporation line.

Beginning again on the north corporation line of the City of Kalona connecting with 1st Street; thence northerly following substantially the section line of Section 6-T77N-R7W to the Washington-Johnson County line at a point near the NW Corner Section 6-T77N-R7W Washington County (SW Corner Section 31-T78N-R7W Johnson County).

#### **STAFF ACTION**

**OFFICE:** Transportation Inventory

**STAFF ACTION NUMBER:** S-85-846

**SUBMITTED BY:** Patrick R. Cain

**SUBMITTAL DATE:** 2-6-85

**TITLE:** Official Description Change: Iowa 1, Washington County

#### **DISCUSSION/BACKGROUND:**

Iowa 1 begins on the Washington-Keokuk County line approximately 1 mile north of the SW corner of Washington County, and travels easterly, northeasterly and northerly via Brighton, Washington, and Kalona to the Washington-Johnson County line approximately 1 mile north of Kalona, Iowa.

A portion of Iowa 1 was annexed into the City of Washington on December 13, 1984. To reflect this annexation and to provide a more detailed description of the extensions of Iowa 1 in Brighton, Washington, and Kalona the official description of Iowa 1 in Washington County should be revised and the new description officially included in the Primary Road System.

#### **PROPOSAL/ACTION RECOMMENDATION:**

It is recommended to approve revising the description of Iowa 1 in Washington County and including the new description in the Primary Road System.

New Description – Iowa 1 and its extensions in Washington County described as follows:

Beginning on the Washington-Keokuk County line at a point approximately 150 feet south of the NW Corner Section 31-T74N-R9W Washington County (NE Corner Section 36-T74N-R10W Keokuk County); thence easterly following substantially the section line of Sections 31, 32, 33, 34, 35, and 36-T74N-R9W to the west corporation line of the City of Brighton connecting with Fountain Street.

## Brighton:

Beginning on Fountain Street at the west corporation line; thence easterly on Fountain Street to an unnamed street; thence northeasterly on unnamed street to the north corporation line.

Beginning again on the north corporation line of the City of Brighton connecting with an unnamed street; thence in a northeasterly direction through Section 30, 29, 20, 17, 16, 9, 10, and 3-T74N-R8W, Section 34, 35, 26, 25, and 24-T75N-R8W, and Section 19-T75N-R7W to the south corporation line of Washington connecting with an unnamed street.

## Washington:

Beginning on an unnamed street at the south corporation line; thence northerly on unnamed street to West Madison Street; thence northwesterly and northerly on the extension of West Madison Street to the north corporation line.

Beginning again on the north corporation line of the City of Washington connecting with the extension of West Madison Street; thence northerly following substantially the section line of Sections 7 and 6-T75N-R7W (north junction Iowa 92), Section 31, 30, 19, 18, 7, and 6-T76N-R7W and Sections 31, 30, 19, and 18-T77N-R7W to the south corporation line of the City of Kalona connecting with 1st Street.

## Kalona:

Beginning on 1st Street at the south corporation line; thence northerly on 1st Street to the north corporation line.

Beginning again on the north corporation line of the City of Kalona connecting with 1st Street; thence northerly following substantially the section line of Section 6-T77N-R7W to the Washington-Johnson County line at a point near the NW Corner Section 6-T77N-R7W Washington County (SW Corner Section 31-T78N-R7W Johnson County).

**COMMISSION ORDER**

**DIVISION:** Planning & Research

**COMMISSION ORDER NUMBER:** PR-79-272

**SUBMITTED BY:** C.I. MacGillivray

**MEETING DATE:** 11-2-78

**TITLE:** Iowa 1, Washington County, Iowa

**DISCUSSION/BACKGROUND:**

Iowa 1 begins on the Washington-Keokuk County line approximately 1 mile north of the SW corner of Washington County, and travels easterly, northeasterly and northerly via Brighton and Kalona to the Washington-Johnson County line approximately 2 miles north of Kalona, Iowa.

Due to a review of our Primary Road System Records Iowa 1 in Washington County should be deleted and the new description added should be officially included into the Primary System.

**PROPOSAL/ACTION RECOMMENDATION:**

It is recommended that the old description of Iowa 1 in Washington County be deleted and the new description, as referred in the attached detailed description, be included in the Primary Road System effective upon the adoption of this resolution.

Locate Iowa 1 and its extensions in Washington County as follows:

Beginning on the Washington-Keokuk County line at a point approximately 150 feet south of the NW Corner Section 31-T74N-R9W Washington County (NE Corner Section 36-T74N-R10W Keokuk County); thence easterly following



substantially the section line of Sections 31, 32, 33, 34, 35, and 36-T74N-R9W to the west corporation line of the City of Brighton connecting with an unnamed street.

Brighton:

Beginning on the west corporation line connecting with an unnamed street; thence easterly and northeasterly to the north corporation line connecting with an unnamed street.

Beginning again on the north corporation line of the City of Brighton connecting with an unnamed street; thence in a northeasterly direction through Sections 30, 29, 20, 17, 16, 9, 10, and 3-T74N-R8W, Sections 34, 35, 26, 25, and 24-T75N-R8W, and Sections 19 and 18-T75N-R7W to a point approximately 950 feet north of the S3 Corner Section 18-T75N-R7W (south junction Iowa 92); thence northwesterly and northerly through said Section 18 to a point near the SW Corner Section 7-T75N-R7W; thence northerly following substantially the section line of Sections 7 and 6-T75N-R7W (north junction Iowa 92), Section 31, 30, 19, 18, 7, and 6-T76N-R7W and Sections 31, 30, 19, and 18-T77N-R7W to the south corporation line of the City of Kalona connecting with an unnamed street.

Kalona:

Beginning on the south corporation line connecting with an unnamed street; thence northerly to the north corporation line connecting with an unnamed street.

Beginning again on the north corporation line of the City of Kalona connecting with an unnamed street; thence northerly following substantially the section line of Section 6-T77N-R7W to the Washington-Johnson County line at a point near the NW Corner Section 6-T77N-R7W Washington County (SE Corner Section 31-T78N-R7W Johnson County).

REVISED: 2-6-85

**OFFICIAL DESCRIPTION CHANGE**

**COUNTY:** Washington

**ROUTE:** Iowa 1

**APPROVAL DATE:** 7-26-56

Beginning on the Keokuk-Washington County line at a point approximately 150 feet south of the NW Corner Section 31-T74N-R9W (NE Corner Section 36-T74N-R10W Keokuk County); thence easterly approximately 6 miles near or along the north line of Sections 31, 32, 33, 34, 35, and 36-T74N-R9W to the west corporation line of the Town of Brighton connecting with Bouton Street.

Beginning again on the north corporation line of the Town of Brighton connecting with an unnamed street; thence in a northeasterly direction through Sections 30, 29, 20, 17, 16, 9, 10, and 3-T74N-R8W, Sections 34, 35, 26, 25, and 24-T75N-R8W, and Sections 19 and 18-T75N-R7W to the west corporation line of the City of Washington connecting with West Madison Street; thence northwesterly through Section 18--T75N-R7W to the west line of said Section 18; thence northerly following substantially the section line to the south corporation line of the Town of Kalona connecting with First Street on the west line of Section 18-T77N-R7W.

Beginning again on the north corporation line of the Town of Kalona connecting with First Street on the west line of Section 7-T77N-R7W; thence north following substantially the section line to the Washington-Johnson County line at a point near the NW Corner Section 6-T77N-R7W Washington County (SE Corner Section 31-T78N-R7W Johnson County).

**OFFICIAL DESCRIPTION CHANGE**

**COUNTY:** Washington

**CITY OF:** Brighton

**ROUTE:** Iowa 1

**APPROVAL DATE:** 2-16-38

Commencing on Fountain Street at the west corporation line; thence easterly on Fountain Street to Benton Street; thence northeasterly on unnamed street approximately 2514 feet to the north corporation line.

**OFFICIAL DESCRIPTION CHANGE**

**COUNTY:** Washington

**CITY OF:** Kalona

**ROUTE:** Iowa 1

**APPROVAL DATE:** 4-14-36

Commencing on First Street on the west side of Section 18-T77N-R7W at the south corporation line; thence northerly on First Street to the north corporation line.