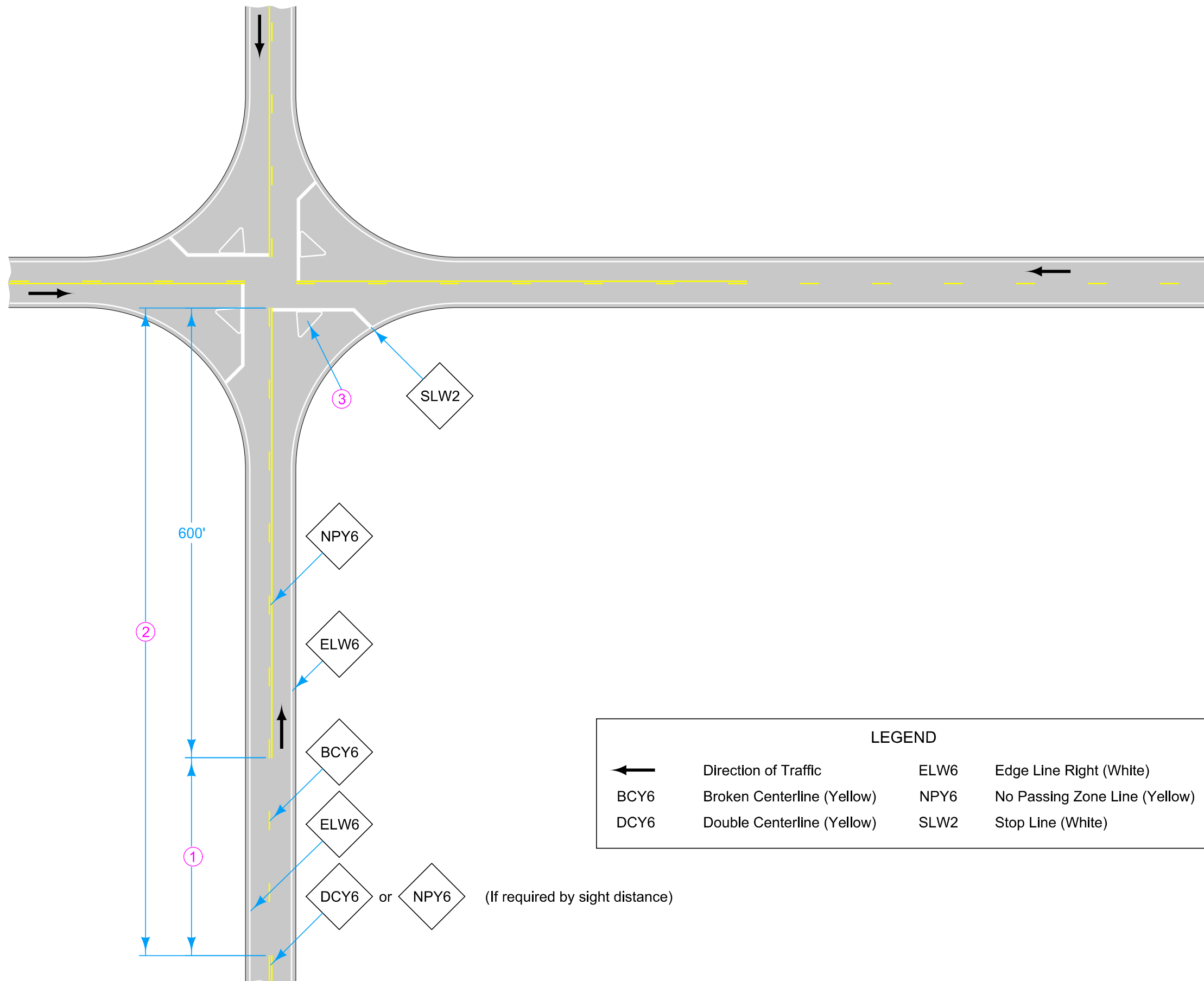


DESIGNER INFORMATION

For line information, see PM-110.

For projects not on the Primary system the following substitutions may be made. See plan sheets for substitutions.

ELW6 → ELW4
 BCY6 → BCY4
 NPY6 → NPY4
 DCY6 → DCY4



- ① If less than 400 feet, join Yellow Lines.
- ② If less than 1000 feet, extend Yellow Line to Stop Line.
- ③ If Island present, see PM-120.

| LEGEND | | | |
|--------|----------------------------|------|-------------------------------|
| | Direction of Traffic | ELW6 | Edge Line Right (White) |
| BCY6 | Broken Centerline (Yellow) | NPY6 | No Passing Zone Line (Yellow) |
| DCY6 | Double Centerline (Yellow) | SLW2 | Stop Line (White) |

DCY6 or NPY6 (If required by sight distance)

Possible Contract Item:
 Pavement Marking Line Items

Possible Tabulation:
 108-22

| | | |
|---------------------------|----------|---------------|
| | REVISION | |
| | 3 | 10-15-24 |
| STANDARD ROAD PLAN | | PM-620 |
| | | SHEET 1 of 1 |

REVISIONS: Modified line widths from 4 inches to 6 inches.

Shawn Miller
 APPROVED BY DESIGN METHODS ENGINEER

**TWO-LANE ROADWAY
 WITH NO TURN LANES
 (FOUR-WAY STOP CONDITION)**