



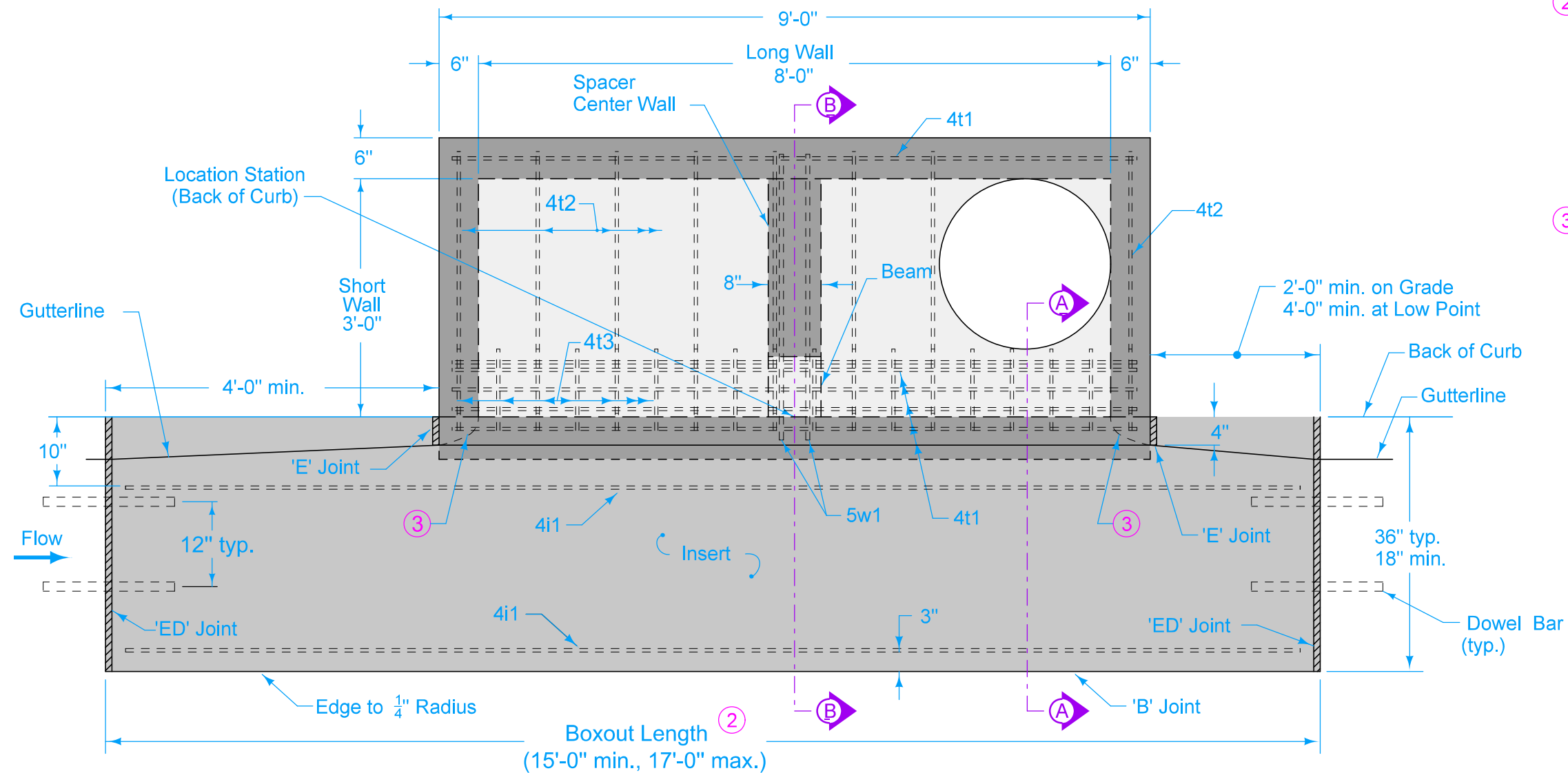


① Insert shaping may be modified for insert widths less than 36 inches. For an 18 inch insert, reduce dimensions indicated by 1/4 inch.

		REVISION	
		7	10-21-25
FIGURE 6010.509	STANDARD ROAD PLAN	SW-509	
		SHEET 1 of 3	
REVISIONS: Updated Sudas and IDOT Logos.			
			
SUDAS DIRECTOR		DESIGN METHODS ENGINEER	
DOUBLE OPEN-THROAT CURB INTAKE, SMALL BOX			



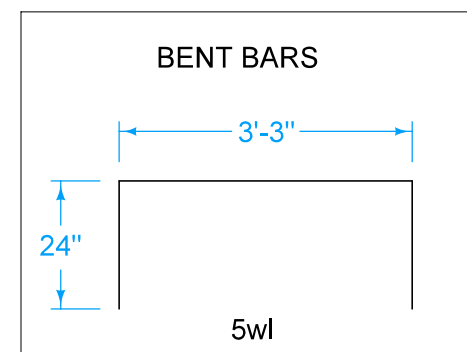
PLAN





② Transverse joint spacing on new concrete pavement is controlled by the intake boxout. Adjust adjacent joint spacing as required to accommodate boxouts.

For retrofit intakes, match existing pavement joints. Stop any transverse pavement joints that do not conform to the minimum spacing requirements at the edge of the insert area.

③ Rounded shaping at inlet.

REINFORCING BAR LIST						
Mark	Size	Location	Shape	Count	Length	Spacing
4b1	4	Base	—	9	3'-6"	12"
4b2	4	Base	—	5	8'-6"	10"
4i1	4	Insert	—	4	Boxout Length minus 8"	See Insert
4t1	4	Top	—	6	8'-6"	See Plan
4t2	4	Top	—	8	3'-6"	12"
4t3	4	Top	—	18	10"	6"
4w1	4	Walls	—	22	Wall Height minus 4"	13"
4w2	4	Long Walls	—	Varies	4'-8"	12"
4w3	4	Short Walls	—	Varies	3'-8"	12"
5w1	5	Beam	└┐	2	7'-3"	4"



		REVISION	
		7	10-21-25
		SW-509	
FIGURE 6010.509	STANDARD ROAD PLAN	SHEET 2 of 3	
REVISIONS: Updated Sudas and IDOT Logos.			
			
SUDAS DIRECTOR		DESIGN METHODS ENGINEER	
DOUBLE OPEN-THROAT CURB INTAKE, SMALL BOX			

