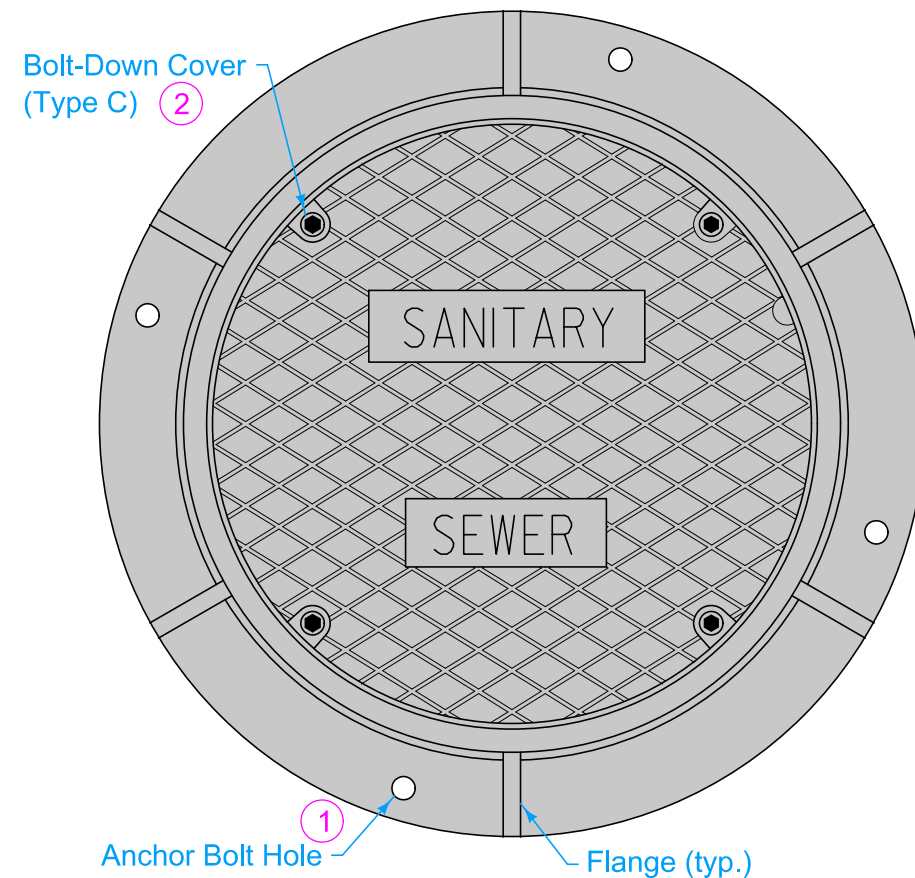


TYPE A

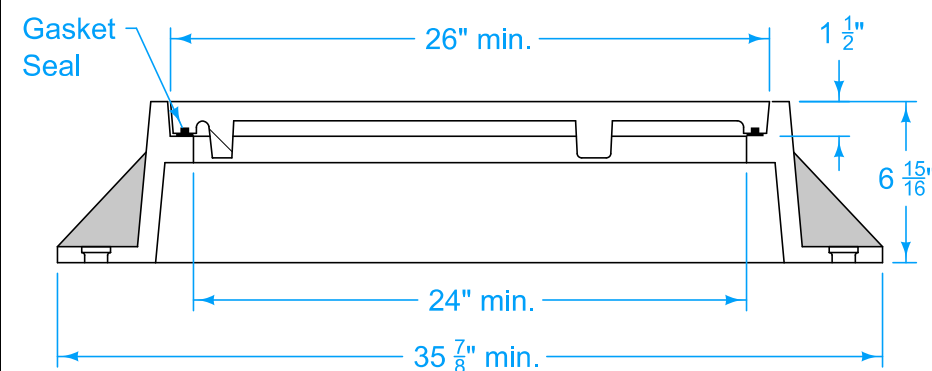
Two-piece fixed casting

TYPE C

Two-piece fixed casting with bolt-down cover (2)



PLAN



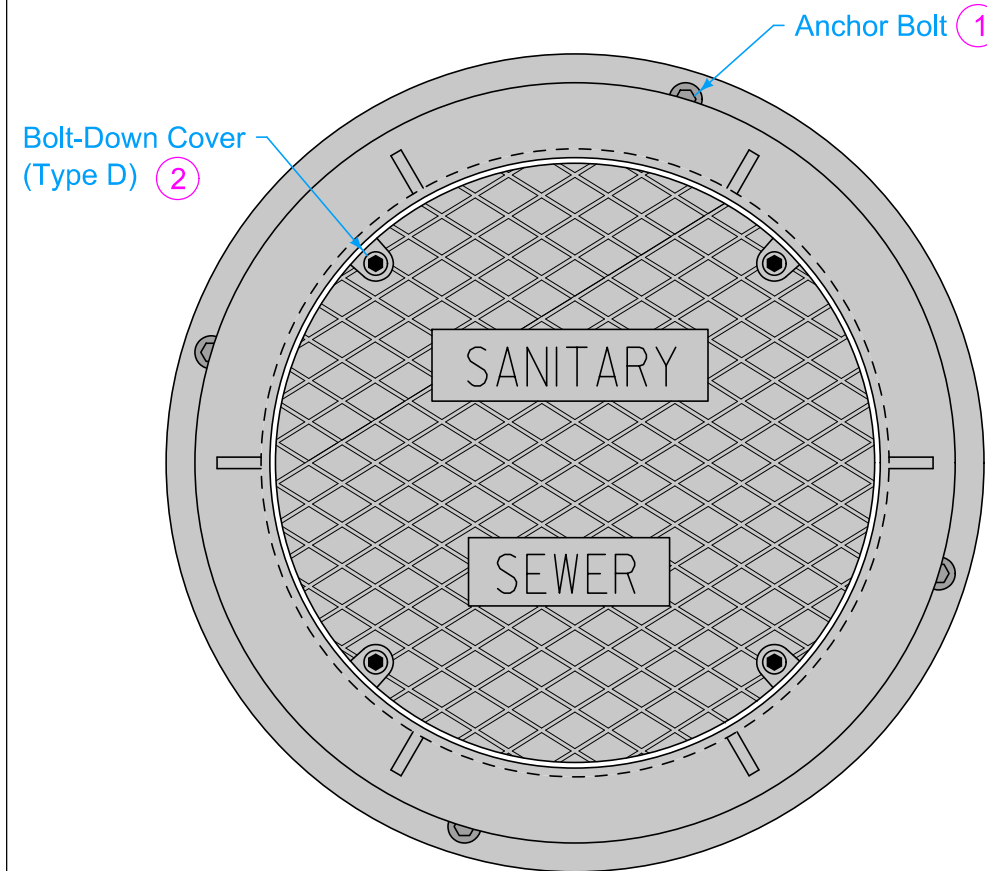
TYPICAL SECTION

TYPE B: HMA

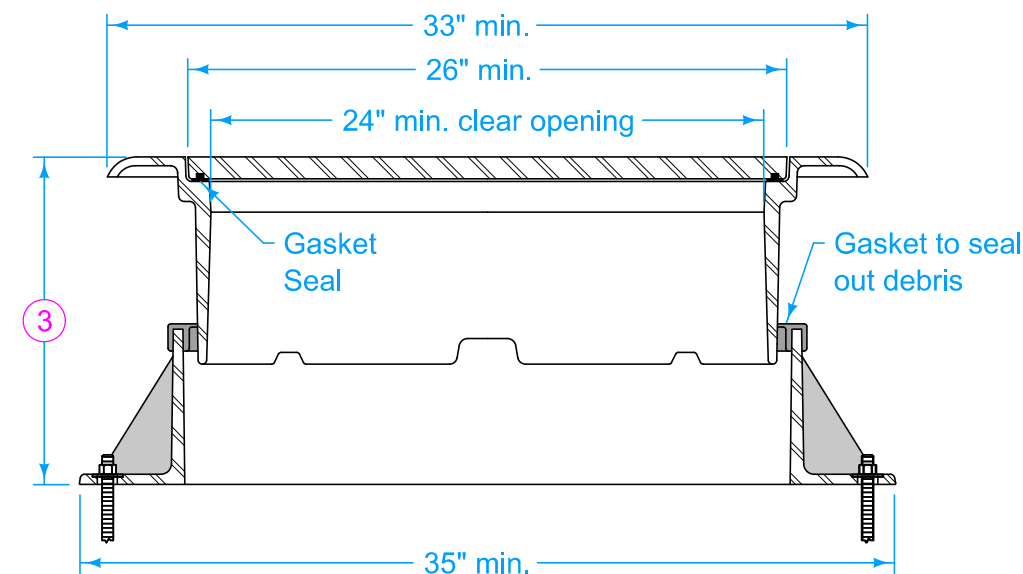
Three-piece floating casting for use in HMA paving

TYPE D: HMA

Three-piece floating casting with bolt-down cover for use in HMA paving (2)



PLAN




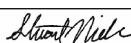


TYPICAL SECTION

Frame Notes:
Size, spacing, and number of lugs and flanges may vary.

Cover Notes:
Roughness pattern and text style may vary.
Minimum one concealed pickhole.

- (1) Anchor the lower frame of all three-piece castings to the manhole structure. When specified in the contract documents, anchor the frame of two-piece castings to the manhole structure. If casting frame does not include anchor holes or slots, drill four 7/8 inch diameter holes, equally spaced around the frame.
- (2) If specified, furnish bolt down frame and cover with four 1/2 inch minimum diameter stainless steel, hex nut, recessed cap screws. Secure cover with screws, washers, and rubber gasket seals.
- (3) Casting height varies. Minimum adjustment range of 4 inches.

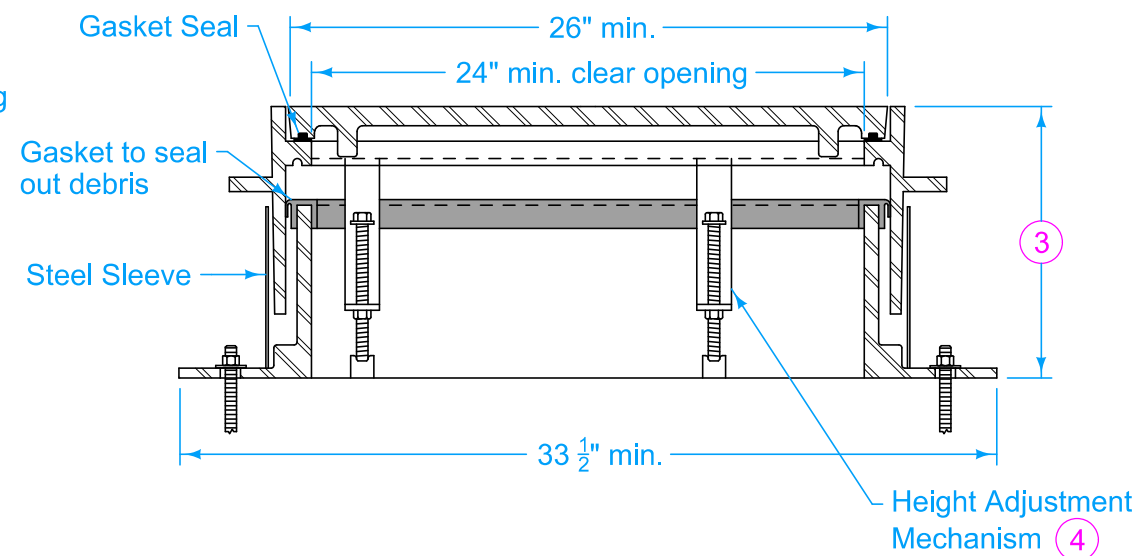
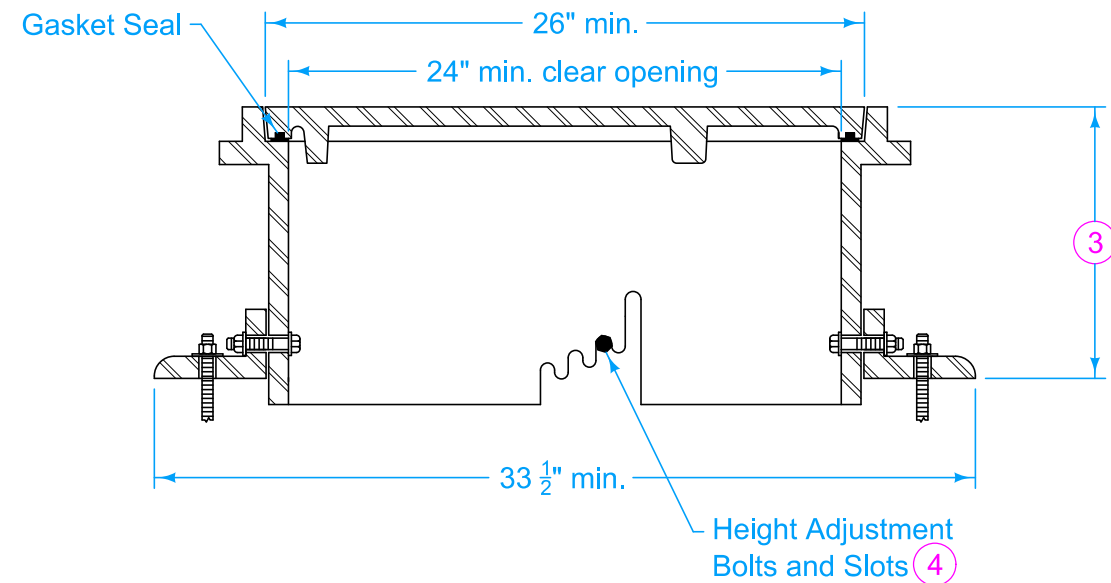
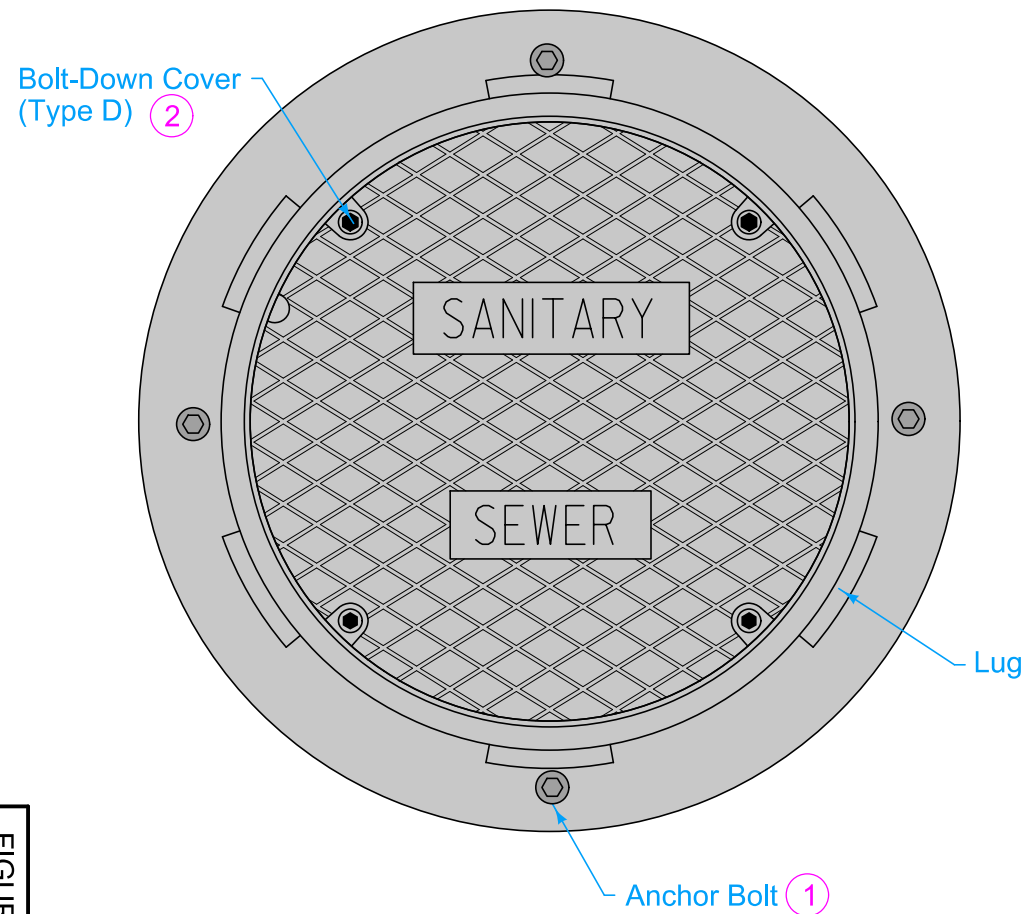
		REVISION	
		5	10-21-25
FIGURE 6010.601	STANDARD ROAD PLAN	SW-601	
		SHEET 1 of 2	
REVISIONS: Updated Sudas and IDOT Logos.			
			
SUDAS DIRECTOR		DESIGN METHODS ENGINEER	
CASTINGS FOR SANITARY SEWER MANHOLES			

TYPE B: PCC

Three-piece floating casting for use
in PCC paving and PCC boxouts

TYPE D: PCC

Three-piece floating casting with bolt-down cover
for use in PCC paving and PCC boxouts




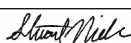


TYPICAL SECTION (5)

Frame Notes:
Size, spacing, and number of lugs and flanges
may vary.

Cover Notes:
Roughness pattern and text style may vary.
Minimum one concealed pickhole.

- (1) Anchor the lower frame of all three-piece castings to the manhole structure. When specified in the contract documents, anchor the frame of two-piece castings to the manhole structure. If casting frame does not include anchor holes or slots, drill four 7/8 inch diameter holes, equally spaced around the frame.
- (2) If specified, furnish bolt down frame and cover with four 1/2 inch minimum diameter stainless steel, hex nut, recessed cap screws. Secure cover with screws, washers, and rubber gasket seals.
- (3) Casting height varies. Minimum adjustment range of 4 inches.
- (4) Set casting at proper grade using the adjustment slots or adjustment mechanism. Remove bolts or mechanism upon completion of paving.
- (5) Height adjustment method may vary; two options are shown.

		REVISION	
		5	10-21-25
FIGURE 6010.601	STANDARD ROAD PLAN	SW-601	
		SHEET 2 of 2	
REVISIONS: Updated Sudas and IDOT Logos.			
			
SUDAS DIRECTOR		DESIGN METHODS ENGINEER	
CASTINGS FOR SANITARY SEWER MANHOLES			