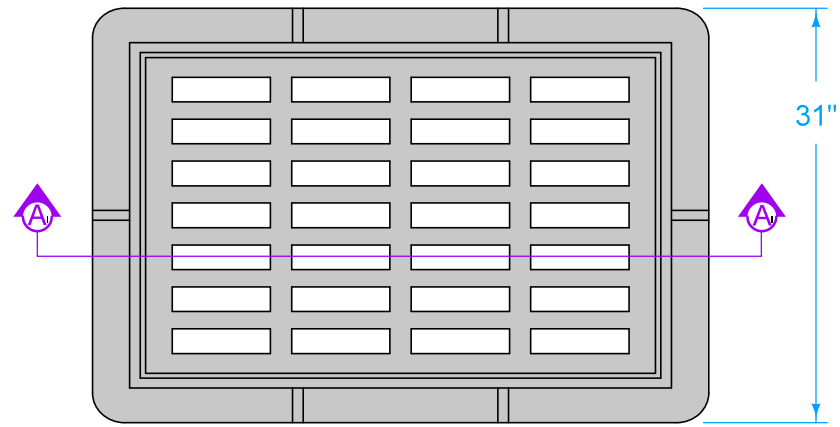
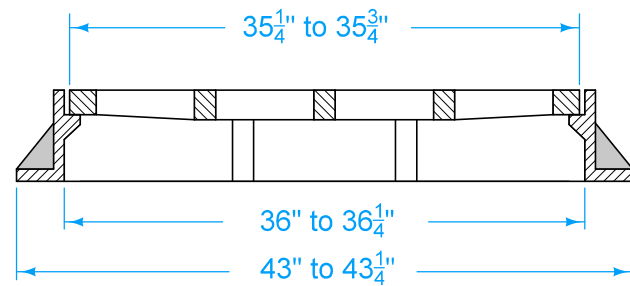


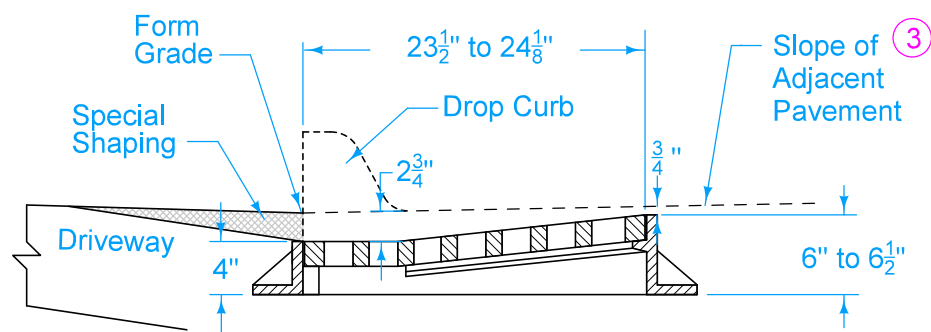
TYPE Q ^①
 Driveway Grate
 (Minimum open area 370 in²)



PLAN

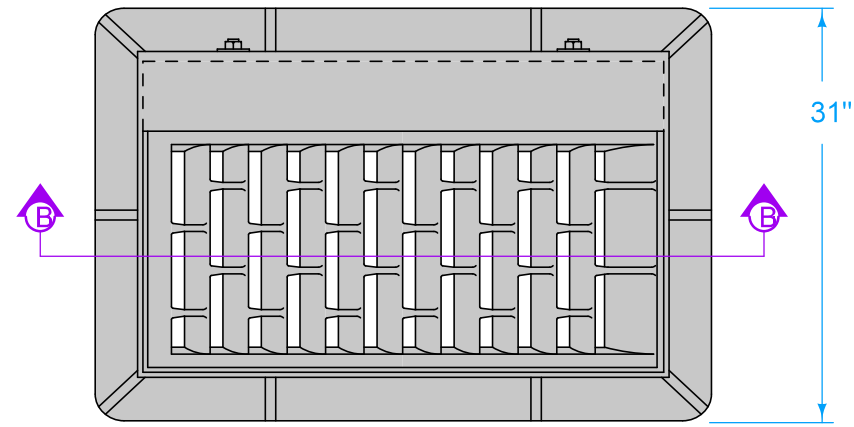


SECTION A-A

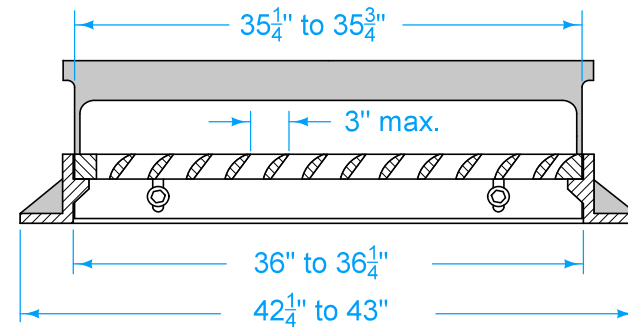


TYPICAL SECTION

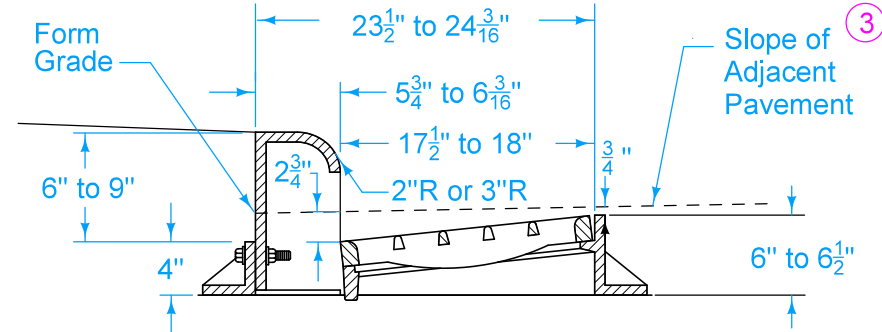
TYPE R ^②
 Curb Inlet Grate
 (Minimum open area 180 in²)



PLAN







SECTION B-B

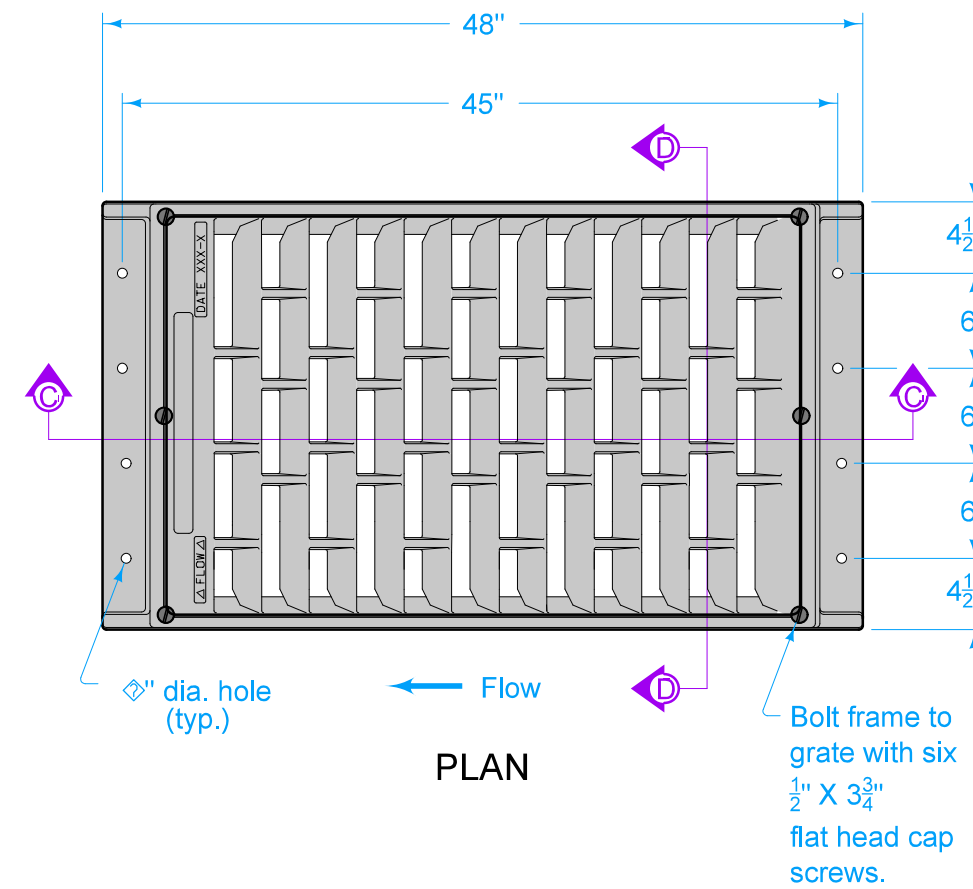


TYPICAL SECTION

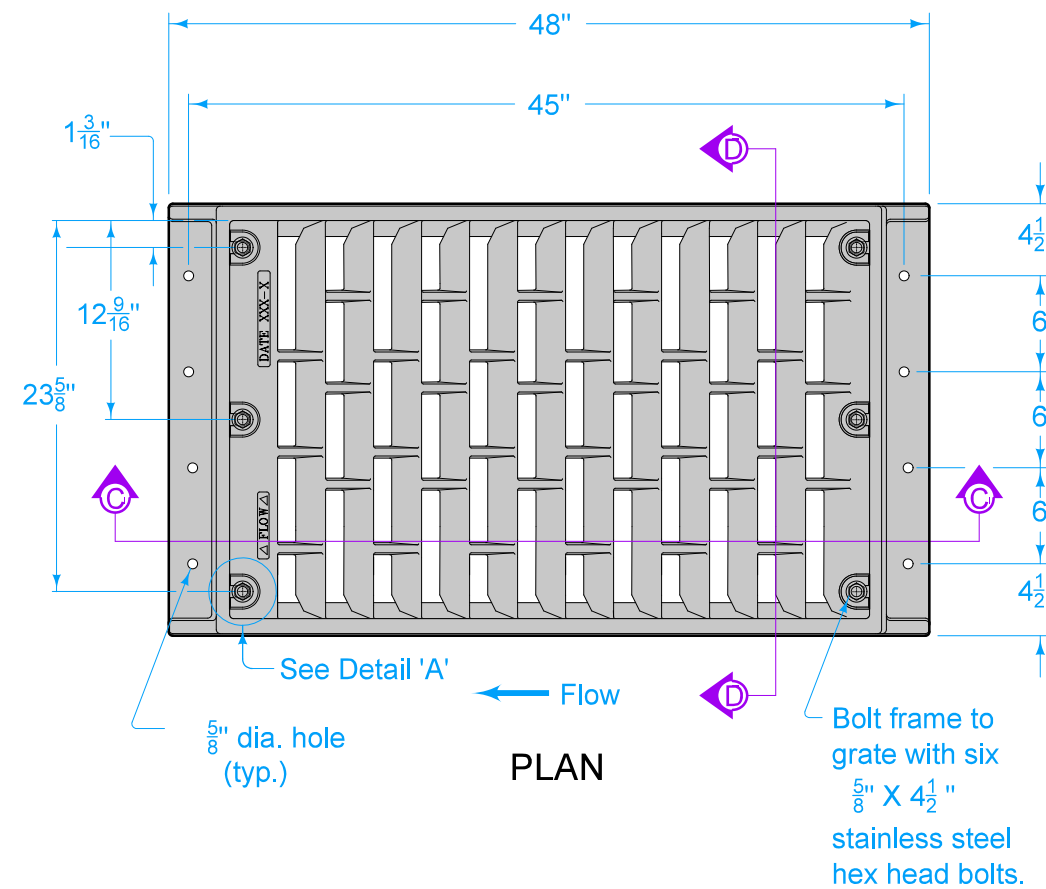
- ① For use at curb drops for driveways. Use only when specified in the contract documents.
- ② Provide bicycle-safe vane-style grate. At low points, grates with vanes facing both directions of flow are allowed.
- ③ For details of boxout pavement, refer to SW-514.

		REVISION	
		7	10-21-25
FIGURE 6010.603	STANDARD ROAD PLAN	SW-603	
		SHEET 1 of 2	
REVISIONS: Updated Sudas and IDOT Logos.			
			
SUDAS DIRECTOR		DESIGN METHODS ENGINEER	
CASTINGS FOR GRATE INTAKES			

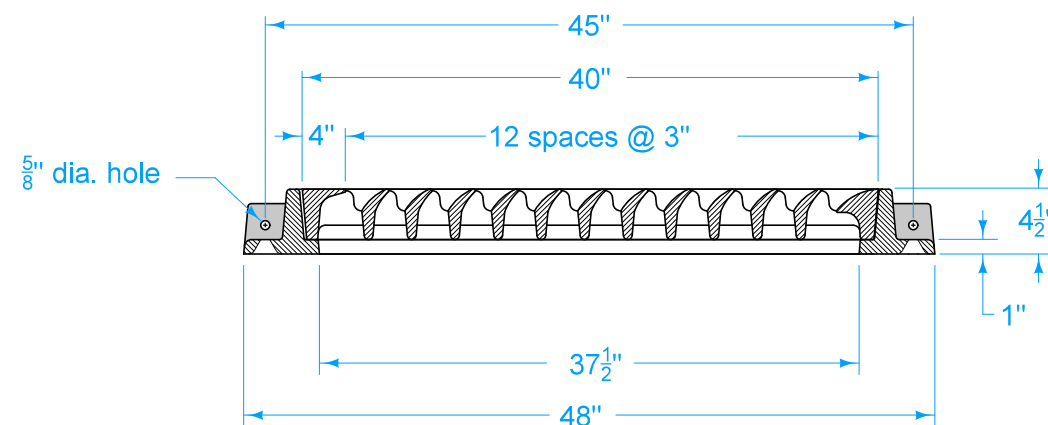
TYPE S ② ④
Barrier Intake Grate
(Minimum open area 300 in²)



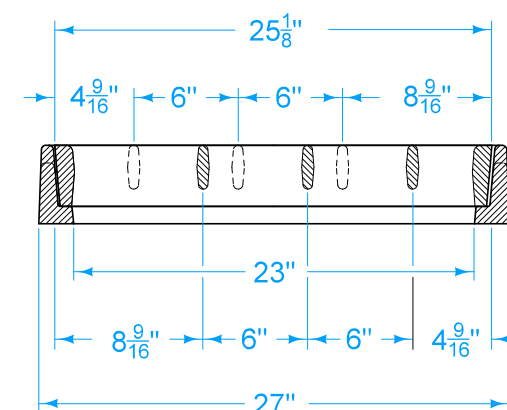
PLAN



PLAN



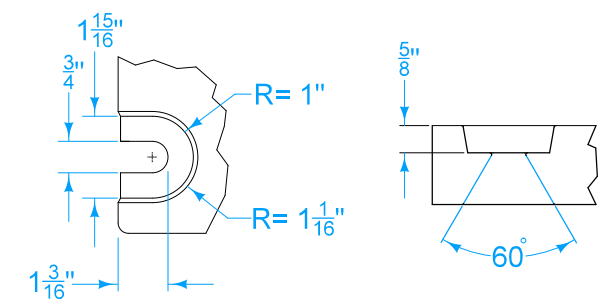
SECTION C-C



SECTION D-D





- ② Provide bicycle-safe vane-style grate. At low points, grates with vanes facing both directions of flow are allowed. The Contractor has the choice of which Type S Grate to use.
- ④ Use ductile iron frame castings meeting the requirements of ASTM A 536.

Frame minimum weight = 220 lbs.
Grate minimum weight = 340 lbs.



DETAIL 'A'

Bolt Slot Detail

		REVISION	
		7	10-21-25
FIGURE 6010.603	STANDARD ROAD PLAN	SW-603	
		SHEET 2 of 2	
REVISIONS: Updated Sudas and IDOT Logos.			
			
SUDAS DIRECTOR		DESIGN METHODS ENGINEER	
CASTINGS FOR GRATE INTAKES			