

TIMING FOR ACTUATED SIGNALS

Recommended Settings, (secs.)

Initial = 12.0  
Extension = 2.5  
Maximum Green = 45.0  
Yellow = 5.0  
All Red = (see table)

Distance Between Stop Lines (ft)	All Red (secs.)
1550	**27-36
1450	**25-33
1350	**23-31
1250	**21-29
1150	**20-26
1050	*21-36
950	*19-33
850	*17-30
750	*15-27
650	*14-23
550	*12-20

\* Range of values are based on operating speeds between 20 and 35 mph  
\*\* Range of values are based on operating speeds between 30 and 40 mph

LEGEND

- Vehicle Detection Area
- Temporary Crash Cushion
- Direction of Traffic
- Traffic Sign
- Drum
- Type 'B' High-Intensity Flashing Warning Light
- Work Area
- Temporary Traffic Signal

SPEED LIMIT (mph)*	A
35 or less	250'
40 - 45	350'
50 or greater	500'

\* Speed Limit refers to regulatory speed limit before road work.

Place Concrete Barrier Markers at 10 ft C/C on bridge rail.  
① Locate signal heads 70 to 100 feet beyond stop bar. Adjust location of signal heads as field conditions warrant.

Possible Contract Items:  
Pavement Marking Items  
Pavement Markings Removed  
Temporary Barrier Rail  
Temporary Crash Cushions  
Temporary Traffic Signals  
Traffic Control

Possible Tabulations:  
108-22  
108-28  
108-30  
108-33

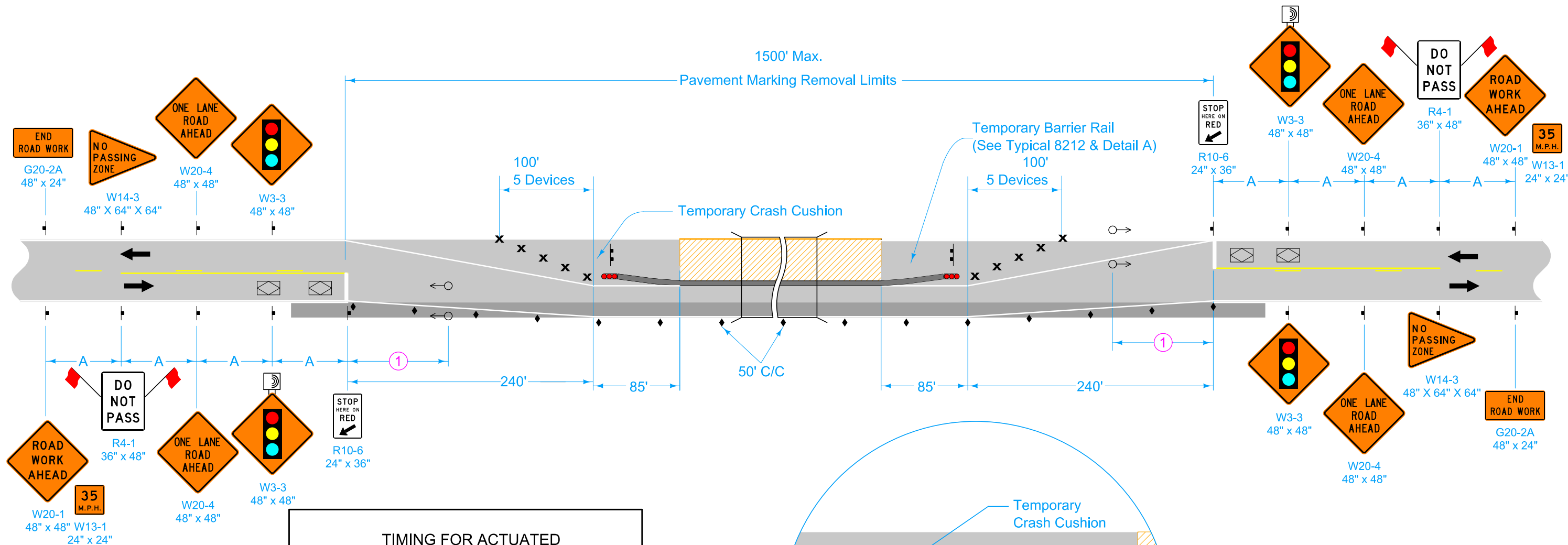
STANDARD ROAD PLAN

REVISIONS: Added detail A, and adjusted all red times.

APPROVED BY DESIGN METHODS ENGINEER

LANE CLOSURE WITH SIGNALS AND TBR

REVISION	
10	10-21-25
TC-217	
SHEET 1 of 2	



**LEGEND**

- Type III Barricade
- Single White Delineators (mount back to back)
- Vehicle Detection Area
- Temporary Crash Cushion
- Direction of Traffic
- Traffic Sign
- Drum
- Type 'B' High-Intensity Flashing Warning Light
- Work Area
- Temporary Traffic Signal

**TIMING FOR ACTUATED SIGNALS**

Distance Between Stop Lines (ft)	All Red (secs.)
1550	**27-36
1450	**25-33
1350	**23-31
1250	**21-29
1150	**20-26
1050	*21-36
950	*19-33
850	*17-30
750	*15-27
650	*14-23
550	*12-20

Recommended Settings, (secs.)

Initial = 12.0  
 Extension = 2.5  
 Maximum Green = 45.0  
 Yellow = 5.0  
 All Red = (see table)

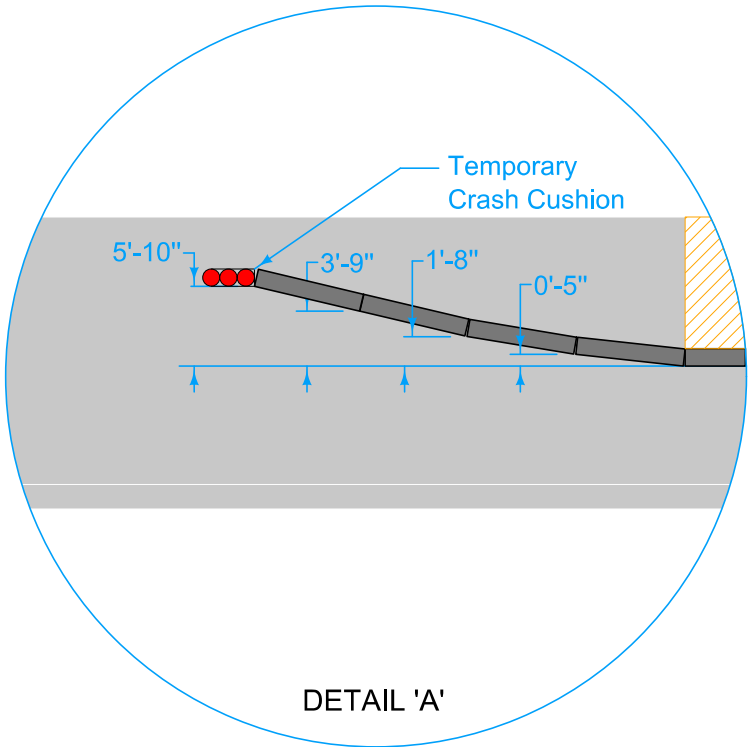
\* Range of values are based on operating speeds between 20 and 35 mph

\*\* Range of values are based on operating speeds between 30 and 40 mph

SPEED LIMIT (mph)*	A
35 or less	250'
40 - 45	350'
50 or greater	500'

Place Concrete Barrier Markers at 10 ft C/C on bridge rail.

① Locate signal heads 70 to 100 feet beyond stop bar. Adjust location of signal heads as field conditions warrant.



Possible Contract Items:

- Pavement Marking Items
- Pavement Markings Removed
- Temporary Barrier Rail
- Temporary Crash Cushions
- Temporary Traffic Signals
- Traffic Control

Possible Tabulations:

- 108-22
- 108-28
- 108-30
- 108-33

<b>IOWA DOT</b> <b>STANDARD ROAD PLAN</b>	REVISION	
	10	10-21-25
<b>TC-217</b> SHEET 2 of 2		
REVISIONS: Added detail A, and adjusted all red times.		
APPROVED BY DESIGN METHODS ENGINEER		
<b>LANE CLOSURE WITH SIGNALS AND TBR</b>		