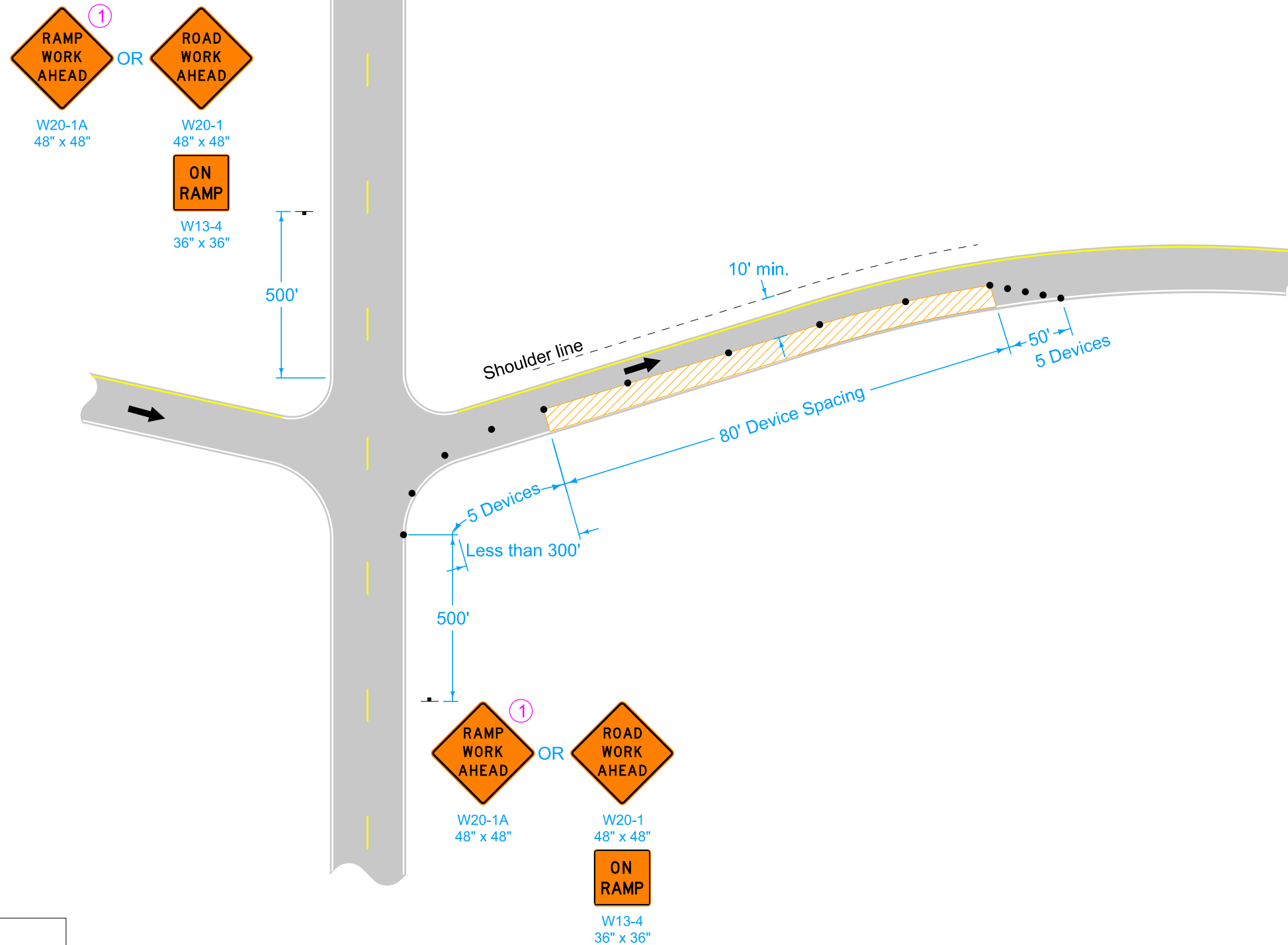


① Refer to SI-881 for sign details.

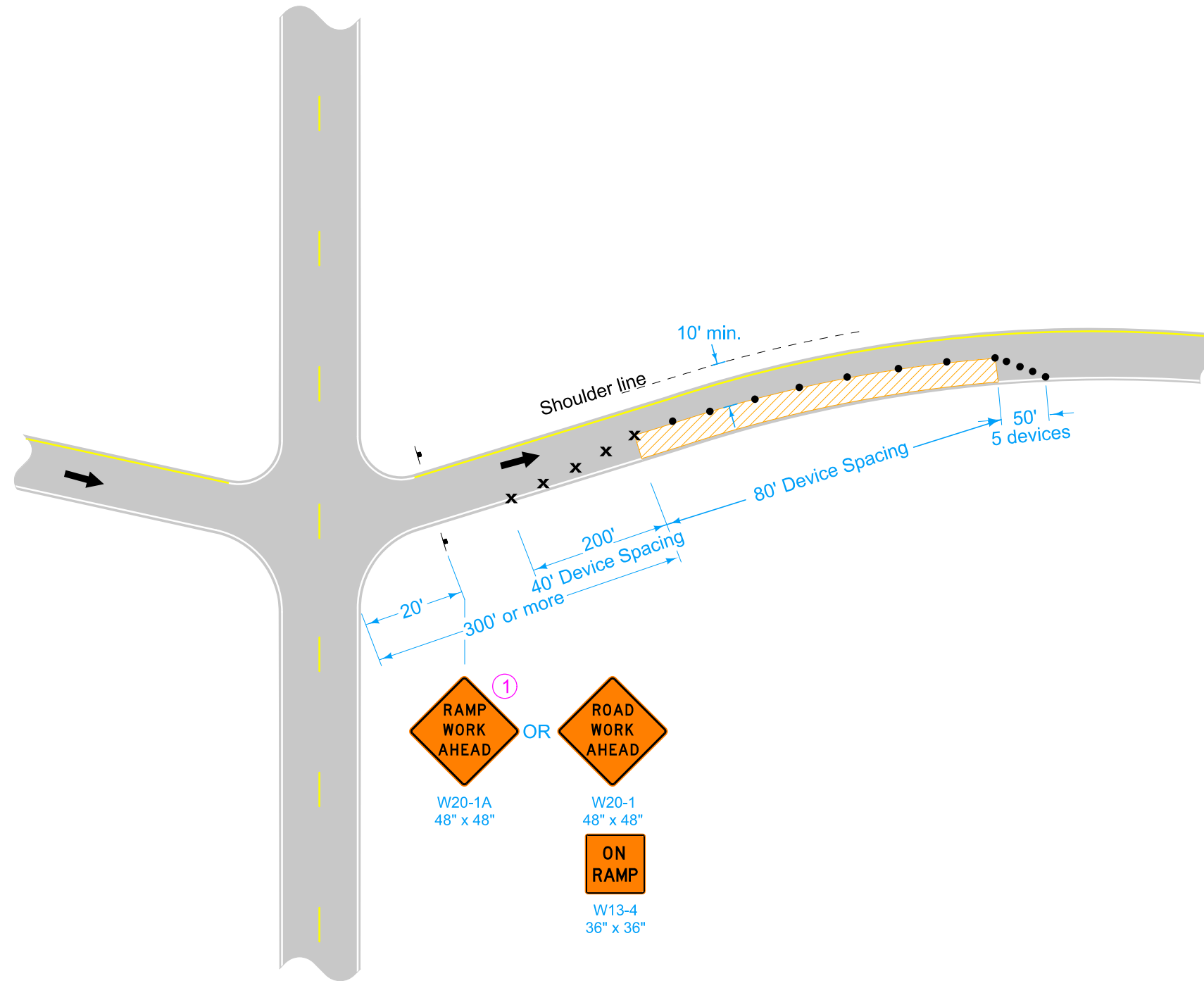


LEGEND	
	Traffic Sign
	42" Channelizer
	Direction of Traffic
	Work Area

Possible Contract Item:  
Traffic Control

	REVISION	
	3	10-15-19
STANDARD ROAD PLAN		TC-416
REVISIONS: New logo.		SHEET 1 of 4
 APPROVED BY DESIGN METHODS ENGINEER		
<b>PARTIAL LANE CLOSURE ON RAMPS</b>		

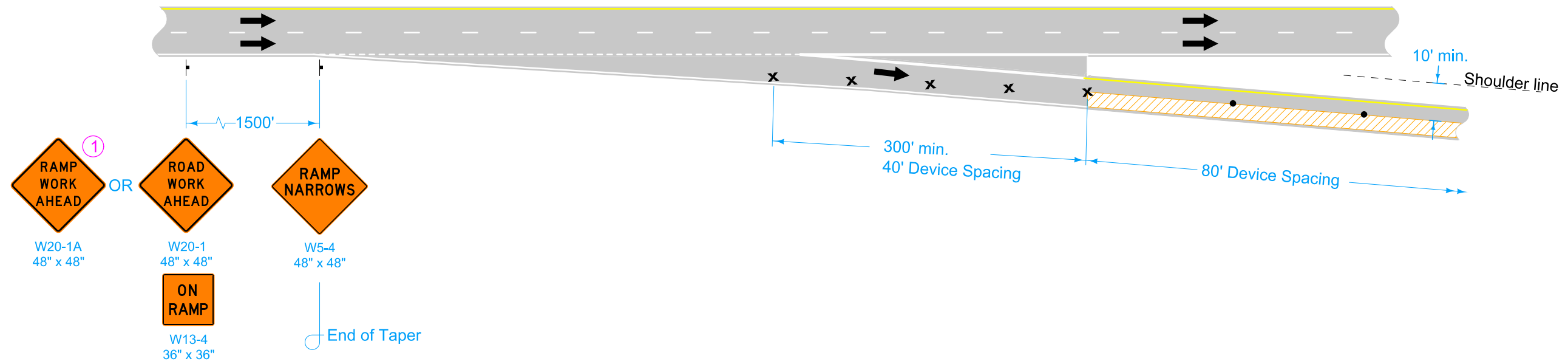
① Refer to SI-881 for sign details.



LEGEND	
x	Drum
†	Traffic Sign
•	42" Channelizer
←	Direction of Traffic
	Work Area

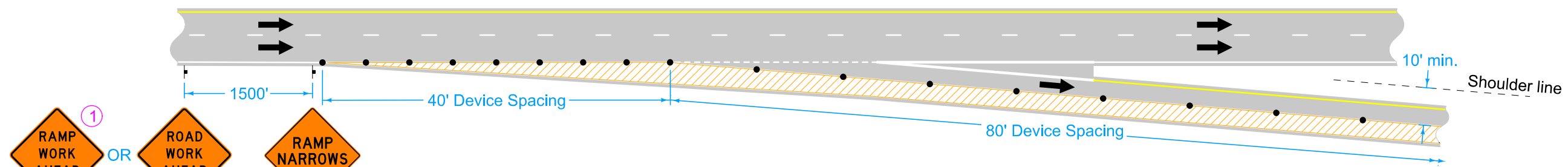
	REVISION	
	3	10-15-19
<b>STANDARD ROAD PLAN</b>		<b>TC-416</b>
REVISIONS: New logo.		SHEET 2 of 4
 APPROVED BY DESIGN METHODS ENGINEER		
<b>PARTIAL LANE CLOSURE ON RAMPS</b>		

① Refer to SI-881 for sign details.



LEGEND	
x	Drum
†	Traffic Sign
•	42" Channelizer
←	Direction of Traffic
▨	Work Area

	REVISION	
	3	10-15-19
STANDARD ROAD PLAN		TC-416
REVISIONS: New logo.		SHEET 3 of 4
 APPROVED BY DESIGN METHODS ENGINEER		
<b>PARTIAL LANE CLOSURE ON RAMPS</b>		

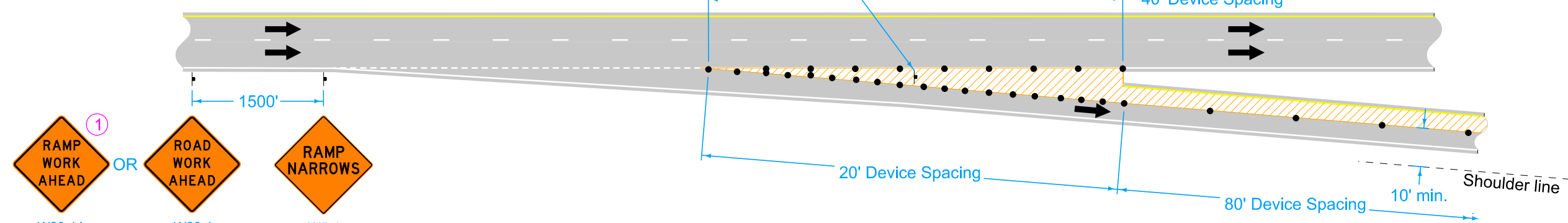


- ① RAMP WORK AHEAD  
W20-1A  
48" x 48"
- OR
- ROAD WORK AHEAD  
W20-1  
48" x 48"
- ON RAMP  
W13-4  
36" x 36"
- RAMP NARROWS  
W5-4  
48" x 48"

End of Taper

- ①
- ① ②
- EXIT  
G20-23  
48" x 48"
- ①
- ① ②
- EXIT  
G20-23A  
12" x 36"
- ①
- ① ②
- EXIT  
G20-23  
48" x 48"

- ① Refer to SI-881 for sign details.
- ② Temporary EXIT sign, mounted so that bottom of sign is a minimum of 3 feet above pavement surface. If in place for more than one day, mount an Exit Number Panel with the proper exit number above the temporary EXIT sign.



- ① RAMP WORK AHEAD  
W20-1A  
48" x 48"
- OR
- ROAD WORK AHEAD  
W20-1  
48" x 48"
- ON RAMP  
W13-4  
36" x 36"
- RAMP NARROWS  
W5-4  
48" x 48"

End of Taper

**LEGEND**

- ⬆ Traffic Sign
- 42" Channelizer
- ← Direction of Traffic
- ▨ Work Area

	REVISION	
	3	10-15-19
<b>STANDARD ROAD PLAN</b>		<b>TC-416</b>
REVISIONS: New logo.		SHEET 4 of 4
 APPROVED BY DESIGN METHODS ENGINEER		
<b>PARTIAL LANE CLOSURE ON RAMPS</b>		