
Non-DOT User Access to Iowa DOT ProjectWise System

Design Manual
Chapter 21
Automation Tools
Instructions

Originally Issued: 10-13-14
Revised: 08-26-25

Gaining Access to Iowa DOT ProjectWise Server

The Iowa Department of Transportation uses Bentley System's ProjectWise software to maintain project files. Non-DOT users can be granted access to the system based on work being done for or with the department. The process for gaining access to the system is outlined below:

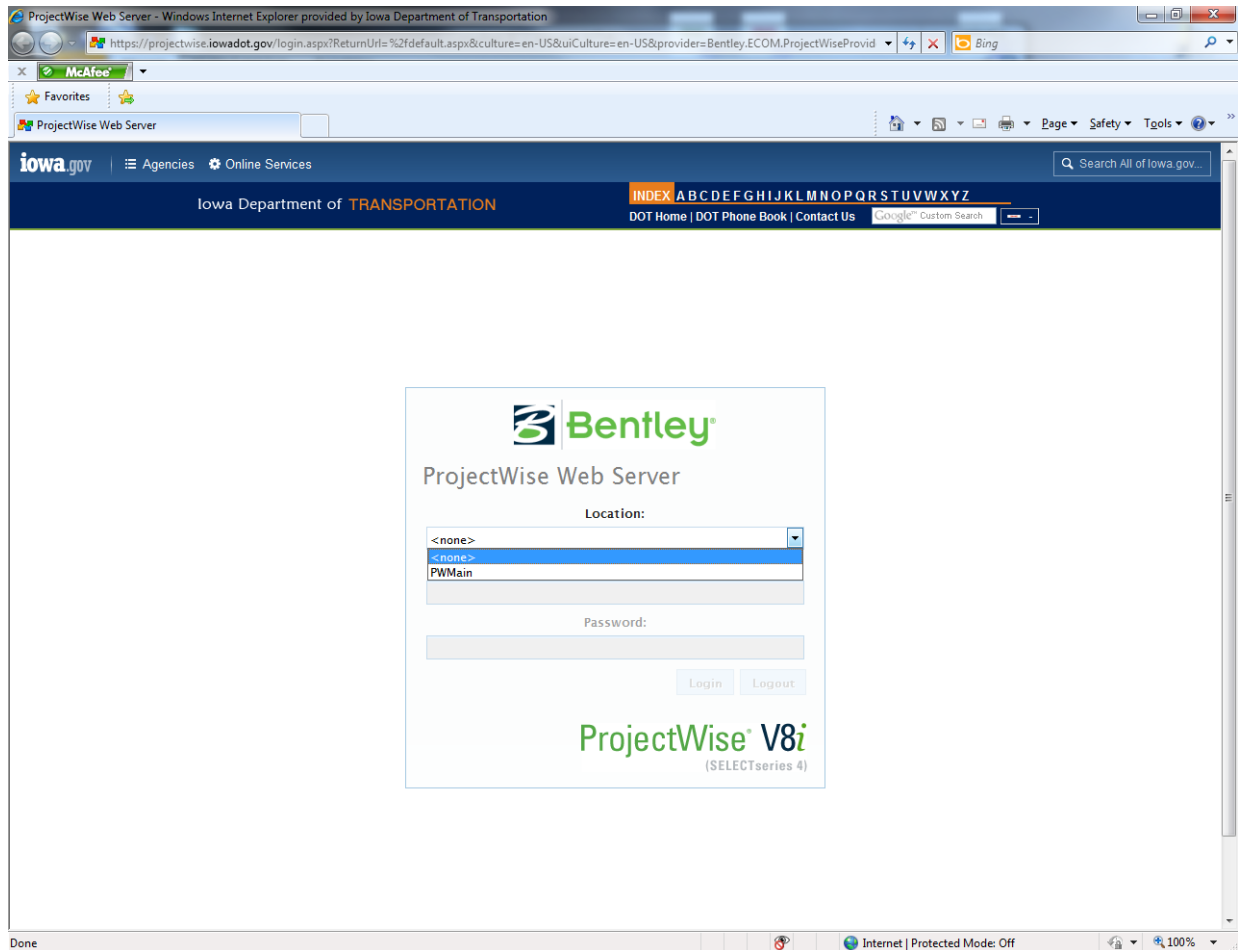
- The non-DOT firm/organization manager/project manager will gather a list of employees that will be accessing the Iowa DOT ProjectWise system and fill their names into DOT Form [171034](#) cover letter. At least one IT staff employee from the non-DOT firm/organization should be included on this list to help install and configure the ProjectWise client on firm's/organization's computers, as well as troubleshoot internal issues.
- Each employee on the list (project manager included) is to fill out and sign DOT Form [171034](#).
- The manager/project manager will gather all of the signed forms and submit them with the cover letter to the appropriate Consultant Coordinator (refer to Section [1B-2](#) for contact information) for DOT approval. The cover letter establishes the point of contact for the non-DOT firm and only needs to be submitted once, unless the point of contact changes.
- The Consultant Coordinator will approve the consulting firm for access and forward the list to the Iowa DOT ProjectWise administrative staff.
- Employees will be sent individual login credentials from the DOT ProjectWise administrative staff. Each employee accessing the Iowa DOT ProjectWise system must have personal login credentials. Generic logins to be shared among employees will not be provided.
- The non-DOT firm/organization is responsible for contacting the Iowa DOT to add or remove employees of the firm/organization resulting from staff changes. No form is needed for removal of a former employee. An email from the firm's established point of contact stating the employee to be removed is sufficient. All new additions must fill out DOT Form [171034](#) and be submitted by the firm's point of contact.

Accessing ProjectWise Documents

Two methods exist to access documents from the ProjectWise system: the web based thin client, and the ProjectWise Explorer thick client. Both methods allow for access to documents through the native software used to create the files. The thin client can be accessed anywhere internet is available without having to install and configure software. The thick client will cache folder structure and allow for faster navigation of documents, but must be installed and configured to connect to the Iowa DOT Datasource. Installation of the thick client also installs integration plugins to software that can be integrated with ProjectWise. Bentley System's Microstation and Microsoft Office are two examples of software with integration. Integration allows for a **File>Open** to display the ProjectWise directory structure for opening documents instead of the Windows directory structure. Using the thick client will allow Microstation files to access the managed workspaces the department has set up. Opening a Microstation file from ProjectWise will allow outside users to have the exact same workspace configuration as the Iowa DOT does internally without having to do the set up.

Logging into the ProjectWise Web Server (Thin Client)

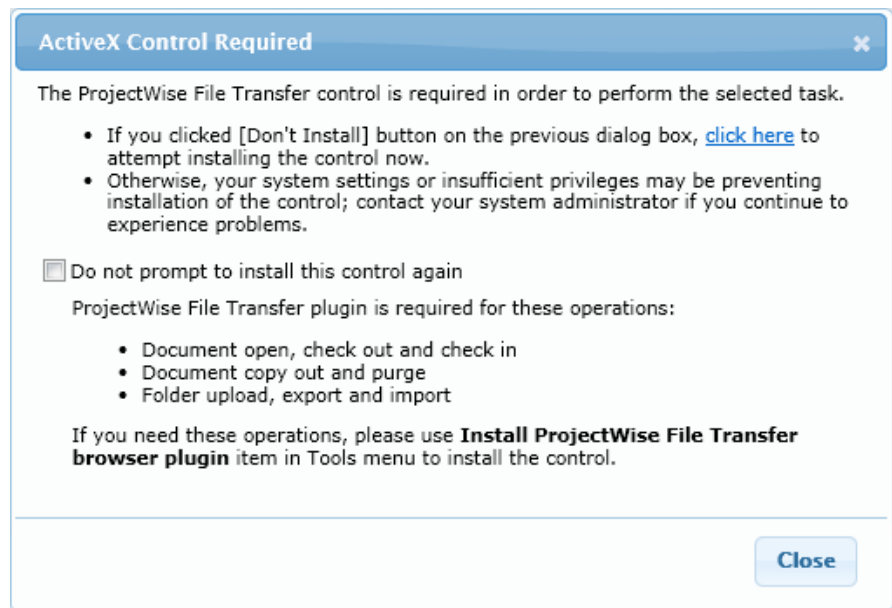
Users will need to log in to the Iowa DOT ProjectWise Web Server to gain access for the first time. The web server can be accessed at the following address: <https://projectwise.iowadot.gov>.



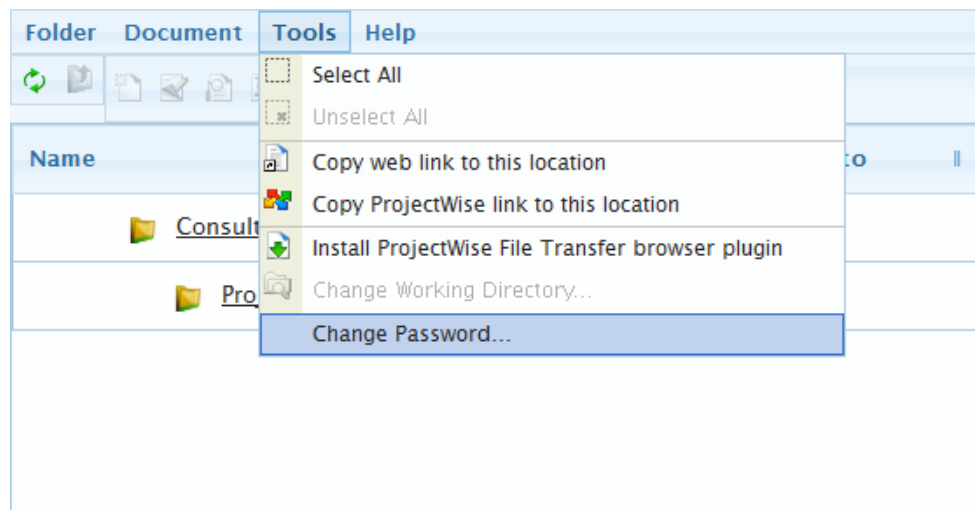
To log into the web server, *select PWMain* in the **Location** dropdown menu and enter your username & password provided by Iowa Department of Transportation into the appropriate fields. Then *click Login*.

A close-up view of the login form. The Bentley logo is at the top. Below it is the text "ProjectWise Web Server". The "Location:" dropdown menu is set to "PWMain". The "User Name:" field contains the text "firstname.lastname". The "Password:" field is filled with dots. "Login" and "Logout" buttons are at the bottom of the form. The footer shows "ProjectWise V8i (SELECTseries 4)".

When logging in for the first time, you may get the message shown to the right. It notifies you that to be able to use the full functionality of the ProjectWise web application, you need to install the Add-on. This will need to be done by an administrator of the computer. The method of installation will vary based on the web browser being used.

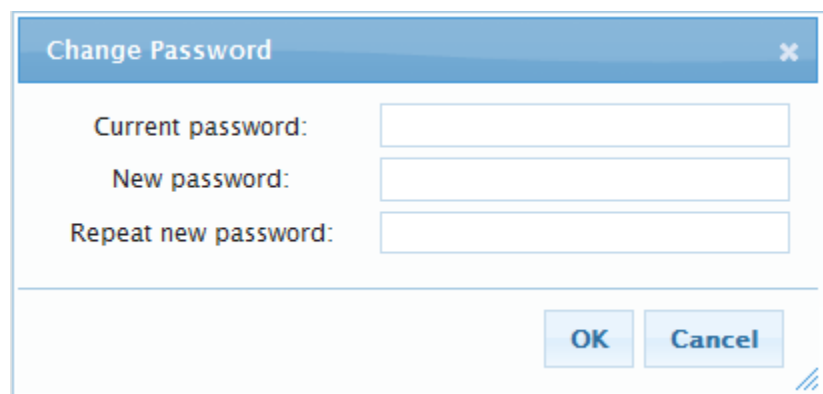


The first time you log into ProjectWise, change the password provided by Iowa Department of Transportation to something unique and strong that you can remember. To do this, **Click on Tools and Select Change Password...**



You will receive the following prompt shown on the right. *Type* in your current password and your new password and **Click OK**.

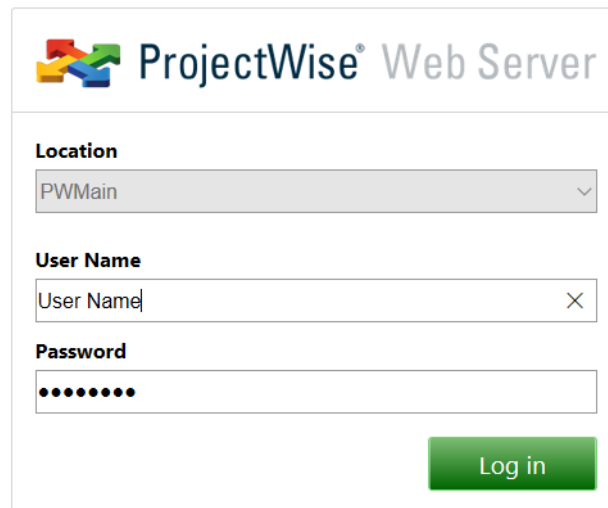
If you forget your password, contact the Iowa DOT Consultant Coordinator or bureau personnel overseeing the project to reset it.



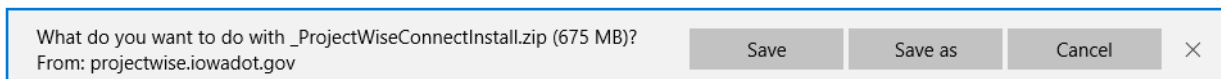
The ProjectWise web client may be used to post, download, or manipulate documents; however, the Iowa DOT will provide the ProjectWise Explorer software for non-DOT use to access documents within the Iowa DOT ProjectWise system.

Installing the ProjectWise Explorer (Thick Client)

The version of the thick client needed to be installed depends on the operating system of your computer. Windows 10 users will need to install [Bentley ProjectWise Connect Edition](#) and Windows 7 users will need to install [Bentley ProjectWise V8i](#). The links will prompt you to login to the Iowa DOT thin (web-based) client. After entering Iowa DOT PW credentials and clicking the **Log in** button, you will be prompted to save the zip package containing the files needed for the appropriate version of the thick client.



The image shows a web-based login form for ProjectWise. At the top left is the ProjectWise logo, which consists of four interlocking arrows in red, green, blue, and yellow. To the right of the logo is the text "ProjectWise® Web Server". Below this, there are three input fields: "Location" with a dropdown menu showing "PWMain", "User Name" with a text box containing "User Name" and a clear button (X), and "Password" with a text box containing ten black dots. A green "Log in" button is positioned at the bottom right of the form.



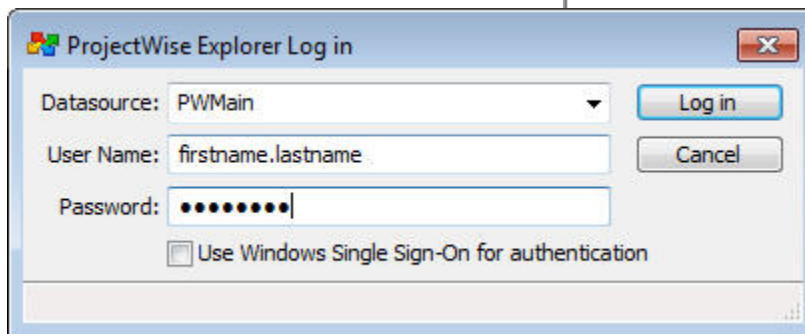
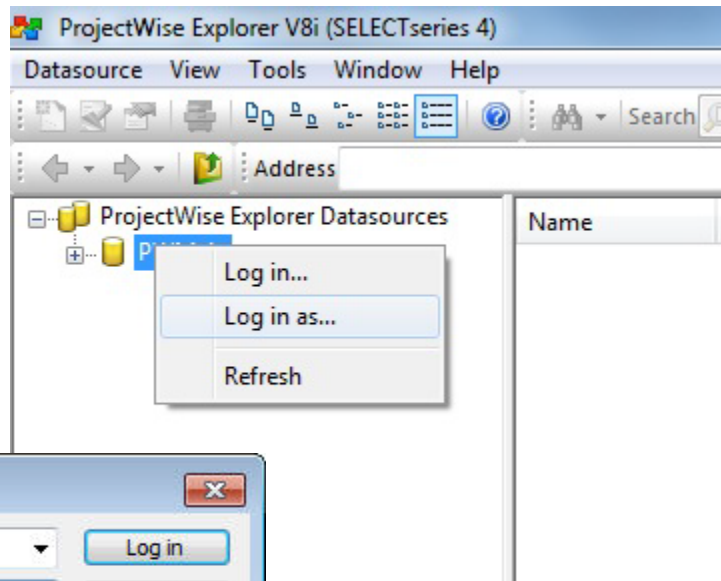
The image shows a Windows file download dialog box. The text reads: "What do you want to do with _ProjectWiseConnectInstall.zip (675 MB)? From: projectwise.iowadot.gov". There are three buttons: "Save", "Save as", and "Cancel", followed by a close button (X).

Choose **Save** or **Save as** to download the file to the location of your choice. Double-clicking on the zip file will show that it contains one folder named `_ProjectWiseConnectInstall`. This folder should be extracted to the root of your C drive (C:\) to ensure that the scripts copy the needed files correctly. There will be an Instructions Word document contained within the zip file package. Follow the steps for installation within the Instructions document to complete the installation. When finished, this folder containing the extracted documents should be deleted from the computer.

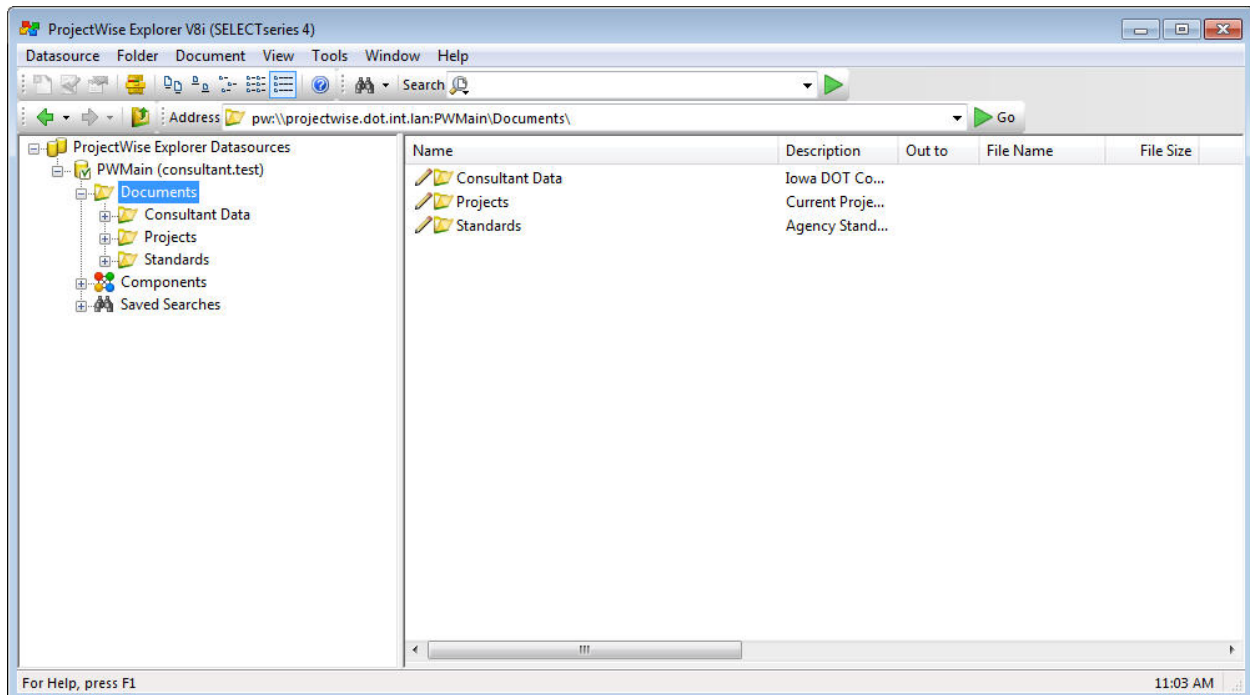
Logging into ProjectWise Explorer

After the appropriate ProjectWise thick client has been installed on your machine and properly configured, you are now ready to connect to the Iowa DOT ProjectWise datasource **PWMain** through the client. To begin this process, *Right-Click* on **PWMain** and *Select Log in as...* to start the login process.

Enter your personal credentials for the Iowa DOT Datasource **PWMain** into the dialog that pops up, as shown below, to log in.



After *Clicking* the **Log in** button, you will have access to the Iowa DOT ProjectWise system through the ProjectWise Explorer client.



Chronology of Changes to Design Manual Section:

021F-001 Non-DOT User Access to Iowa DOT ProjectWise System

8/26/2025	Revised updated process for account management on page 3
9/7/2017	Revised Updated instructions for ProjectWise thick to include process for Windows 10 operating system.
3/31/2016	Revised Updated information regarding form 171034 to clarify when it would need to be resubmitted. Added additional information on adding/removing outside users. Moved consultant coordinator information to Section 1B-2.
10/13/2014	NEW New