

## **OFFICIAL DESCRIPTION CHANGE**

**OFFICE:** Transportation Data

**EFFECTIVE DATE:** 01-28-2004

**ENTERED BY:** Stefani Wonders

**ENTERED DATE:** 02-10-2005

**TITLE:** Iowa 5 in Marion County

### **DISCUSSION/BACKGROUND:**

New Description -Iowa 5 and its extensions in Marion County described as follows:

Beginning on the Marion-Monroe County line at a point near the SE Corner of Section 34-T74N-R18W, Marion County (NE Corner of Section 3-T73N-R18W, Monroe County); thence in a northwesterly direction through said Section 34 to the south corporation line of Hamilton (approximately 1330 feet north and 990 feet west of the SE Corner of Section 34-T74N-R18W) connecting with an unnamed street.

Hamilton:

Beginning on an unnamed street at the south corporation line; thence northwest on unnamed street to the west corporation line (approximately 1780 feet north and 1440 feet west of the SE Corner of Section 34-T74N-R18W).

Beginning again on the west corporation line of Hamilton connecting with an unnamed street; thence in a northwesterly direction through Sections 34, 27, 28, 21, 20, 17, 18, and 7-T74N-R18W to a point near the center of Section 7-T74N-R18W; thence west following substantially the center section line of Section 7-T74N-R18W and Sections 12 and 11-T74N-R19W to a point near the N  $\frac{1}{4}$  Corner SE  $\frac{1}{4}$  of Section 11-T74N-R19W; thence in a northwesterly direction through Sections 11, 2, and 3-T74N-R19W and Sections 34, 27, 21, 20, and 17-T75N-R19W to a point approximately 500 feet north and 250 feet west of the center of Section 17-T75N-R19W (east junction Iowa 92); thence westerly through Sections 17 and 18-T75N-R19W to the east corporation line of Knoxville (approximately 820 feet north of the E  $\frac{1}{4}$  Corner of said Section 18).

Knoxville:

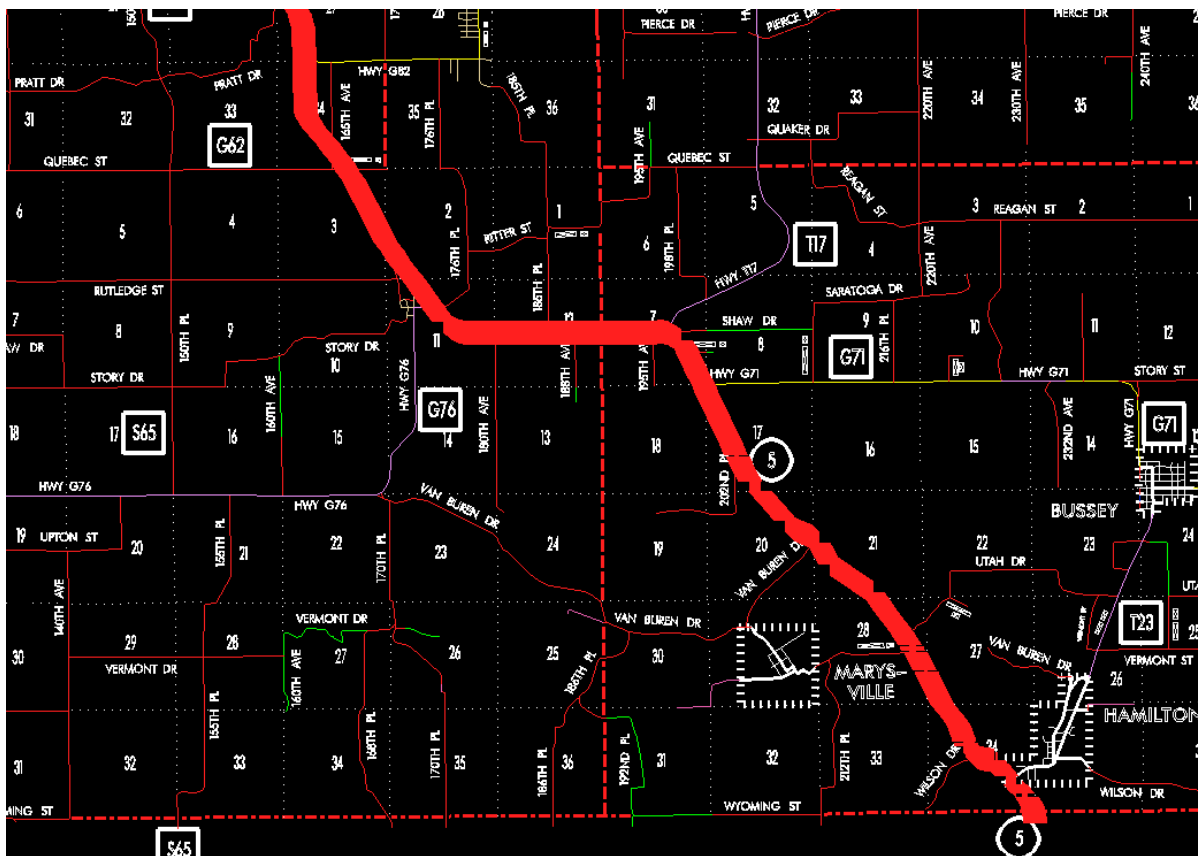
Beginning on the east corporation line; thence northwesterly to the west corporation line (near the NW Corner of Section 13-T75N-R20W).

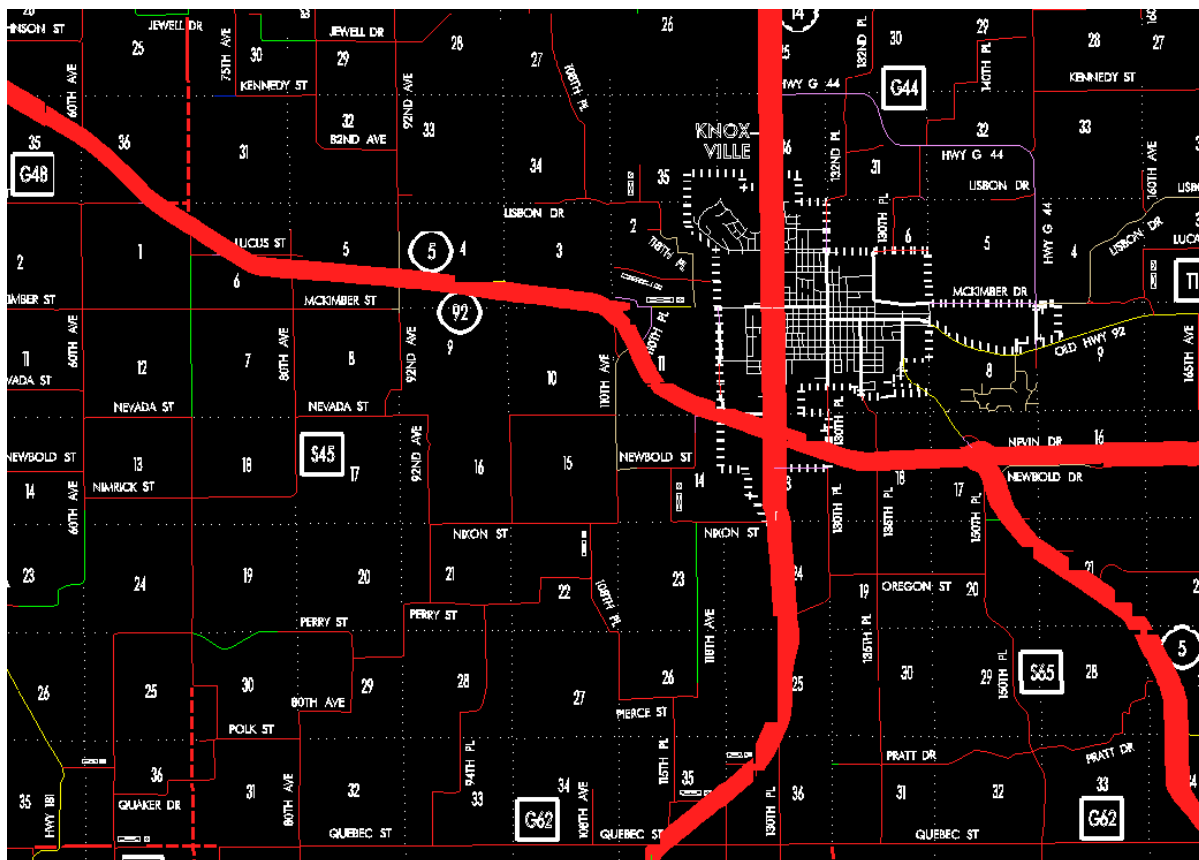
Beginning again on the west corporation line of Knoxville; thence northwesterly through Sections 13, 11, 10, 3, 4, 5, and 6–T75N–R20W, Section 1–T75N–R21W, and Sections 36, 35, 26, and 27–T76N–R21W to a point approximately 850 feet south of the center of Section 27–T75N–R21W (west junction Iowa 92); thence northerly and northwesterly through Sections 27 and 22–T76N–R21W to the south corporation line of Pleasantville (approximately 2400 feet south of the NW Corner of said Section 22).

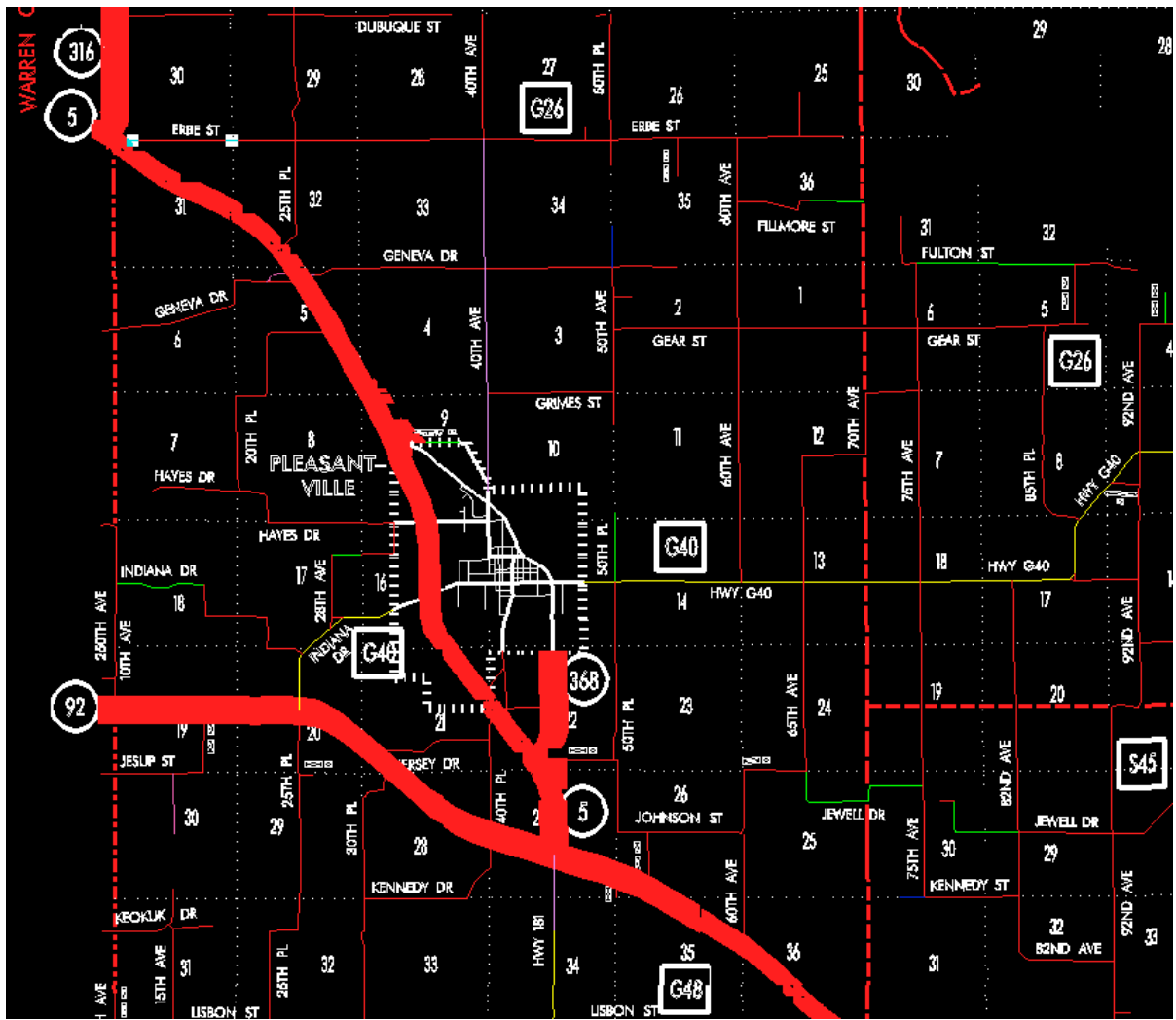
Pleasantville:

Beginning on the south corporation line; thence northerly and northwesterly to the north corporation line (approximately 1980 feet south and 1400 feet east of the NW Corner of Section 9–T76N–R21W).

Beginning again on the north corporation line; thence northwesterly through Sections 9 and 5–T76N–R21W and Sections 32 and 31–T77N–R21W to the Marion–Warren County line at a point near the NW Corner of said Section 31, Marion County (NE Corner of Section 36–T77N–R22W, Warren County).







STAFF ACTION

**OFFICE:** Transportation Inventory  
**STAFF ACTION NUMBER:** S-03-0787  
**SUBMITTED BY:** Peggi Knight  
**SUBMITTAL DATE:** 04-15-2003

**TITLE:** Iowa 5, Marion County

**DISCUSSION / BACKGROUND:**

New Description – Iowa 5 and its extensions in Marion County described as follows:

Beginning on the Marion–Monroe County line at a point near the SE Corner of Section 34–T74N–R18W, Marion County (NE Corner of Section 3–T73N–R18W, Monroe County); thence in a northwesterly direction through said Section 34 to the south corporation line of Hamilton (approximately 1330 feet north and 990 feet west of the SE Corner of Section 34–T74N–R18W) connecting with an unnamed street.

Hamilton:

Beginning on an unnamed street at the south corporation line; thence northwest on unnamed street to the west corporation line (approximately 1780 feet north and 1440 feet west of the SE Corner of Section 34–T74N–R18W).

Beginning again on the west corporation line of Hamilton connecting with an unnamed street; thence in a northwesterly direction through Sections 34, 27, 28, 21, 20, 17, 18, and 7–T74N–R18W to a point near the center of Section 7–T74N–R18W; thence west following substantially the center section line of Section 7–T74N–R18W and Sections 12 and 11–T74N–R19W to a point near the N  $\frac{1}{4}$  Corner SE  $\frac{1}{4}$  of Section 11–T74N–R19W; thence in a northwesterly direction through Sections 11, 2, and 3–T74N–R19W and Sections 34, 27, 21, 20, and 17–T75N–R19W to a point approximately 500 feet north and 250 feet west of the center of Section 17–T75N–R19W (east junction Iowa 92); thence westerly through Sections 17 and 18–T75N–R19W and northwesterly through Sections

13 (junction Iowa 14), 12, 11, 10, 3, 4, 5, and 6-T75N-R20W, Section 1-T75N-R21W, and Sections 36, 35, 26, and 27-T76N-R21W to a point approximately 850 feet south of the center of Section 27-T75N-R21W (west junction Iowa 92); thence north following substantially the center section line of Sections 27, 22, and 15-T76N-R21W to the south corporation line of Pleasantville (approximately 1520 feet north of the S ¼ Corner of Section 15-T76N-R21W) connecting with Hobson Street.

Pleasantville:

Beginning on Hobson Street at the south corporation line; thence north and northwest on Hobson Street to the west corporation line (approximately 1820 feet north and 1350 feet west of the SE Corner of Section 9-T76N-R21W).

Beginning on the west corporation line of Pleasantville connecting with Hobson Street; thence in a northwesterly direction through Section 9-T76N-R21W to approximately 420 feet north and 380 feet west of the Center of Section 9-T76N-R21W (junction of Unsigned Iowa 368); thence west, southwest, and northwest to approximately 340 feet north and 970 feet west of the Center of Section 9; thence northwesterly through Sections 9, 4, and 5-T76N-R21W and Sections 32 and 31-T77N-R21W to the Marion-Warren County line near the NW Corner of Section 31-T77N-R21W, Marion County (NE Corner of Section 36-T77N-R22W, Warren County).

#### **PROPOSAL / ACTION RECOMMENDATION:**

It is recommended that the old description of Iowa 5 and its extensions in Marion County be deleted and the new description be included in the Primary Road System.

#### **OFFICIAL DESCRIPTION CHANGE**

**COUNTY:** Marion

**ROUTE:** Iowa 5

**STAFF ACTION NUMBER:** S-87-1532

**APPROVAL DATE:** 5-13-87

New description – Iowa 5 and its extensions in Marion County described as follows:

Beginning on the Marion–Monroe County line at a point near the SE Corner of Section 34–T74N–R18W, Marion County (NE Corner of Section 3–T73N–R18W, Monroe County); thence in a northwesterly direction through said Section 34 to the south corporation line of Hamilton connecting with an unnamed street.

Hamilton:

Beginning on unnamed street at the south corporation line; thence northwest on unnamed street to the west corporation line.

Beginning again on the west corporation line of Hamilton connecting with an unnamed street; thence in a northwesterly direction through Sections 34, 27, 28, 21, 20, 17, 18 and 7–T74N–R18W to a point near the center of Section 7–T74N–R18W; thence west following substantially the center section line of Section 7–T74N–R18W and Sections 12 and 11–T74N–R19W to a point approximately one-quarter mile west of the E  $\frac{1}{4}$  Corner of Section 11–T74N–R19W; thence in a northwesterly direction through Sections 11, 2 and 3–T74N–R19W and Sections 34, 27, 21, 20 and 17–T75N–R19W to a point approximately 450 feet north and 250 feet west of the center Section 17–T75N–R19W (east junction Iowa 92); thence westerly through Sections 17 and 18–T75N–R19W and northwesterly through Sections 13 (junction Iowa 14), 12, 11, 10, 3, 4, 5 and 6–T75N–R20W; and Section 1–T75N–R21W; and Sections 36, 35, 26 and 27–T76N–R21W to a point approximately 850 feet south of the center Section 27–T76N–R21W (west junction Iowa 92); thence north following substantially the center section line of Sections 27, 22 and 15–T76N–R21W to the south corporation line of Pleasantville connecting with Hobson Street.

Pleasantville:

Beginning on Hobson Street at the south corporation line; thence north and northwest on Hobson Street to the west corporation line.

Beginning again on the west corporation line of Pleasantville connecting with Hobson Street; thence in a northwesterly direction through Sections 9, 4 and 5-T76N-R21W and Sections 32 and 31-T77N-R21W to the Marion-Warren County line at a point near the NW Corner of Section 31-T77N-R21W, Marion County (NE Corner of Section 36-T77N-R22W, Warren County).



**COMMISSION ORDER**

**DIVISION:** Planning & Research

**COMMISSION ORDER NUMBER:** PR-81-758

**SUBMITTED BY:** Patrick R. Cain

**MEETING DATE:** 5-12-81

**TITLE:** Iowa 5, Marion County

**DISCUSSION/BACKGROUND:**

Due to its relocation in the Knoxville area, Iowa 5 in Marion County should be deleted from the primary road system and the new description should be officially included in the primary road system.

Iowa 5 begins on the Marion-Monroe County line near the City of Hamilton and proceeds northwesterly via the Cities of Hamilton and Pleasantville to the Marion-Warren County line approximately four miles northwest of the City of Pleasantville.

**PROPOSAL/ACTION RECOMMENDATION:**

It is recommended the commission approve deleting the present description of Iowa 5 in Marion County from the primary road system and approve including the attached new description of Iowa 5 in the primary road system.

Locate Iowa 5 and its extensions in Marion County as follows:

Beginning on the Marion-Monroe County line at a point near the SE Corner of Section 34-T74N-R18W, Marion County (NE Corner of Section 3-T73N-R18W, Monroe County); thence in a northwesterly direction through said Section 34 to

the south corporation line of the City of Hamilton connecting with an unnamed street.

Hamilton:

Beginning on unnamed street at the south corporation line; thence northwesterly on unnamed street to the west corporation line.

Beginning again on the west corporation line of the City of Hamilton connecting with an unnamed street; thence in a northwesterly direction through Sections 34, 27, 28, 21, 20, 17, 18 and 7-T74N-R18W to a point near the center of Section 7-T74N-R18W; thence west following substantially the center section line of Section 7-T74N-R18W and Sections 12 and 11-T74N-R19W to a point approximately one-quarter mile west of the E  $\frac{1}{4}$  Corner of Section 11-T74N-R19W; thence in a northwesterly direction through Sections 11, 2 and 3-T74N-R19W and Sections 34, 27, 21, 20 and 17-T75N-R19W to a point approximately 450 feet north and 250 feet west of the center Section 17-T75N-R19W (east junction Iowa 92); thence westerly through Sections 17 and 18-T75N-R19W and northwesterly through Sections 13 (junction Iowa 14), 12, 11, 10, 3, 4, 5 and 6-T75N-R20W; and Section 1-T75N-R21W; and Sections 36, 35, 26 and 27-T76N-R21W to a point approximately 850 feet south of the center Section 27-T76N-R21W (west junction Iowa 92); thence northerly following substantially the center section line of Sections 27, 22 and 15-T76N-R21W to the south corporation line of the City of Pleasantville connecting with an unnamed street.

Pleasantville:

Beginning on the south corporation line connecting with an unnamed street; thence northerly and northwesterly to the west corporation line connecting with an unnamed street.

Beginning again on the west corporation line of the City of Pleasantville connecting with an unnamed street; thence in a northwesterly direction through Sections 9, 4 and 5-T76N-R21W and Sections 32 and 31-T77N-R21W to the

Marion-Warren County line at a point near the NW Corner of Section 31-T77N-R21W, Marion County (NE Corner of Section 36-T77N-R22W, Warren County).

REVISED: 5-13-87

**COMMISSION ORDER**

**DIVISION:** Planning & Research

**COMMISSION ORDER NUMBER:** PR-79-272

**SUBMITTED BY:** C.I. MacGillivray

**MEETING DATE:** 11-2-78

**TITLE:** Iowa 5, Marion County, Iowa

**DISCUSSION/BACKGROUND:**

Due to a review of our Primary Road System Records, Iowa 5 in Marion County should be deleted and the new description added should be officially included into the Primary System.

**PROPOSAL/ACTION RECOMMENDATION:**

It is recommended that the old description of Iowa 5 in Marion County be deleted and the new description, as referred in the attached detailed description, be included in the Primary Road System effective upon the adoption of this resolution.

Locate Iowa 5 and its extensions in Marion County as follows:

Beginning on the Marion-Monroe County line at a point near the SE Corner of Section 34-T74N-R18W, Marion County (NE Corner of Section 3-T73N-R18W, Monroe County); thence in a northwesterly direction through said Section 34 to the south corporation line of the City of Hamilton connecting with an unnamed street.

Hamilton:

Beginning on unnamed street at the south corporation line; thence northwesterly on unnamed street to the west corporation line.

Beginning again on the west corporation line of the City of Hamilton connecting with an unnamed street; thence in a northwesterly direction through Sections 34, 27, 28, 21, 20, 17, 18, and 7-T74N-R18W to a point near the center of Section 7-T74N-R18W; thence west following substantially the center section line of Section 7-T74N-R18W and Sections 12 and 11-T74N-R19W to a point approximately  $\frac{1}{4}$  mile west of the E  $\frac{1}{4}$  Corner of Section 11-T74N-R19W; thence in a northwesterly direction through Sections 11, 2, and 3-T74N-R19W and Sections 34, 27, 21, 20, 17, 8, and 7-T75N-R19W to the south corporation line of the City of Knoxville connecting with an unnamed street.

Knoxville:

Beginning on the south corporation line connecting with an unnamed street; thence northerly, westerly, northerly, and westerly to the west corporation line connecting with an unnamed street.

Beginning again on the west corporation line of the City of Knoxville connecting with an unnamed street; thence west following substantially the section line of Section 11-T75N-R20W to a point approximately 980 feet east of the SW Corner of Section 2-T75N-R20W; thence westerly and northwesterly through Sections 2, 3, 4, 5, and 6-T75N-R20W, Section 1-T75N-R21W and Sections 36, 35, 26, and 27-T76N-R21W to a point near the center of Section 27-T76N-R21W, (west junction Iowa 92); thence north following substantially the center section line Sections 27, 22, and 15-T76N-R15W; to the south corporation line of the City of Pleasantville connecting with an unnamed street.

Pleasantville:

Beginning on the south corporation line connecting with an unnamed street; thence northerly and northwesterly to the west corporation line connecting with an unnamed street.

Beginning again on the west corporation line of the City of Pleasantville connecting with an unnamed street; thence in a northwesterly direction through Sections 9, 4, and 5-T76N-R21W and Sections 32 and 31-T77N-R21W to the Marion-Warren County line at a point near the NW Corner of Section 31-T77N-R21W, Marion County (NE Corner of Section 36-T77N-R22W, Warren County).

REVISED: 5-12-81

**OFFICIAL DESCRIPTION CHANGE**

**COUNTY:** Marion

**ROUTE:** Iowa 5

**APPROVAL DATE:** 12-31-68

Beginning on the Marion-Monroe County line at a point near the SE Corner of Section 34-T74N-R18W, Marion County (NE Corner of Section 3-T73N-R18W, Monroe County); thence in a northwesterly direction to the south corporation line of the Town of Hamilton connecting with an unnamed street.

Hamilton:

Beginning on unnamed street at the south corporation line; thence northwesterly on unnamed street to the west corporation line.

Beginning again on the west corporation line of the Town of Hamilton connecting with an unnamed street; thence in a northwesterly direction through Sections 34, 27, 28, 21, 20, 17, 18 and 7-T74N-R18W to a point near the center of Section 7-T74N-R18W; thence west following substantially the quarter section line to a point approximately  $\frac{1}{4}$  mile west of the E  $\frac{1}{4}$  Corner of Section 11-T74N-R19W; thence in a northwesterly direction through Sections 11, 2 and 3-T74N-R19W and Sections 34, 27, 28, 21, 20, 17, 8 and 7-T75N-R19W to the south corporation line of the City of Knoxville connecting with Attica Street.

Knoxville:

Beginning on Attica Street at the south corporation line; thence northerly to Main Street; thence westerly on Main Street to Roche Street; thence northerly on Roche Street to Pleasant Street; thence westerly on Pleasant Street to the West Corporation line.

Beginning again on the west corporation line of the City of Knoxville connecting with Pleasant Street; thence west following substantially the section line to a point approximately 980 feet east of the SW Corner of Section 2-T75N-R20W; thence westerly and northwesterly through Sections 2, 3, 4, 5, and 6-T75N-R20W, Section 1-T75N-R21W and Sections 36, 35, 26 and 27-T76N-R21W to a point near the center of Section 27-T76N-R21W; thence north following substantially the quarter section line to the south corporation line of the Town of Pleasantville connecting with Hobson Street.

Pleasantville:

Beginning on Hobson Street at the south corporation line; thence northerly and northwesterly on Hobson Street to the north corporation line.



Beginning again on the north corporation line of the Town of Pleasantville connecting with Hobson Street thence in a northwesterly direction through Sections 9, 4, and 5-T76N-R21W and Sections 32 and 31-T77N-R21W to the Marion-Warren County line at a point near the NW Corner of Section 31-T77N-R21W, Marion County (NE Corner of Section 36-T77N-R22W, Warren County).

REVISED: 11-2-78