

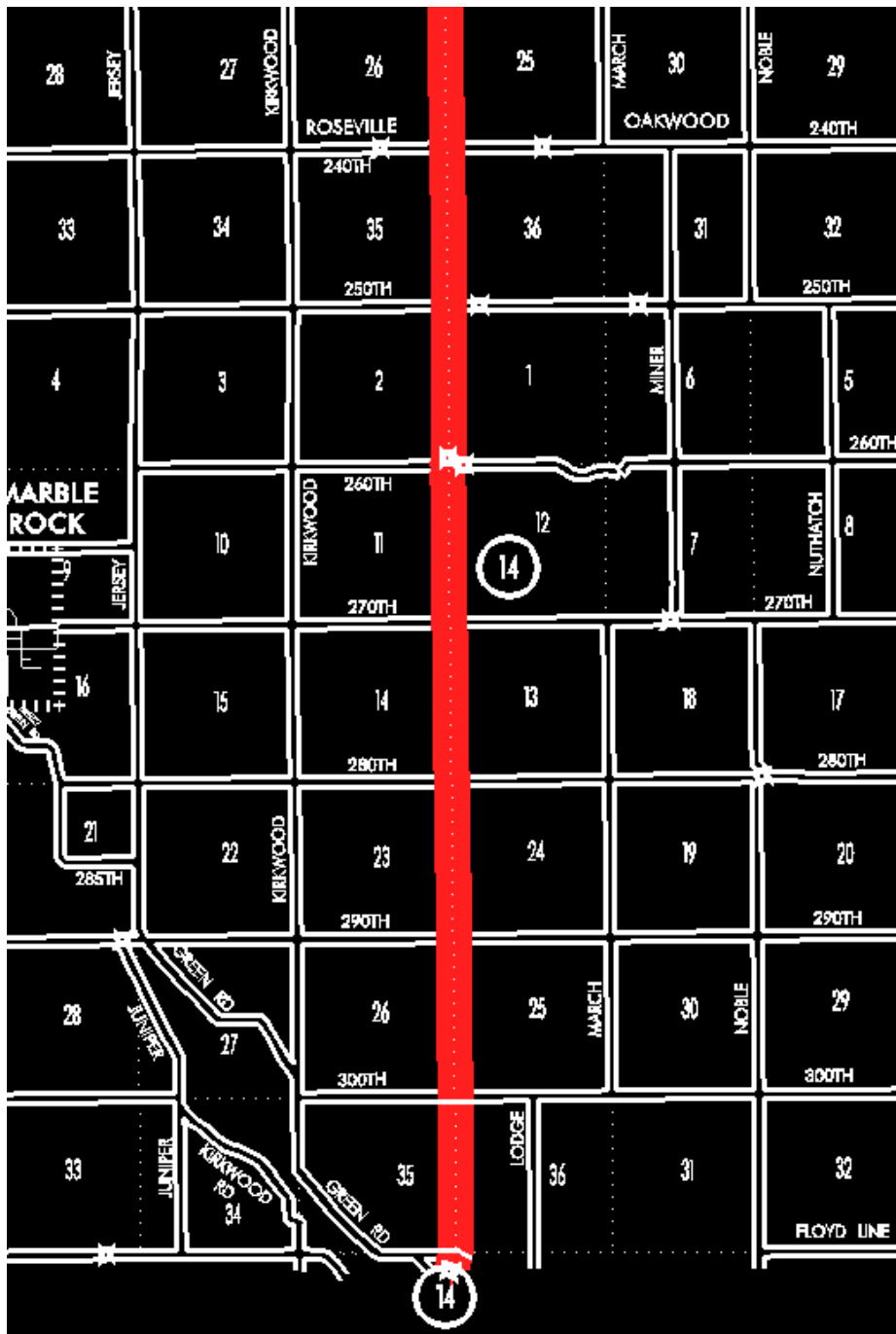
OFFICIAL DESCRIPTION CHANGE**OFFICE:** Transportation Data**EFFECTIVE DATE:** Summer 2005**ENTERED BY:** Darlene Bovee**ENTERED DATE:** 05-28-2008

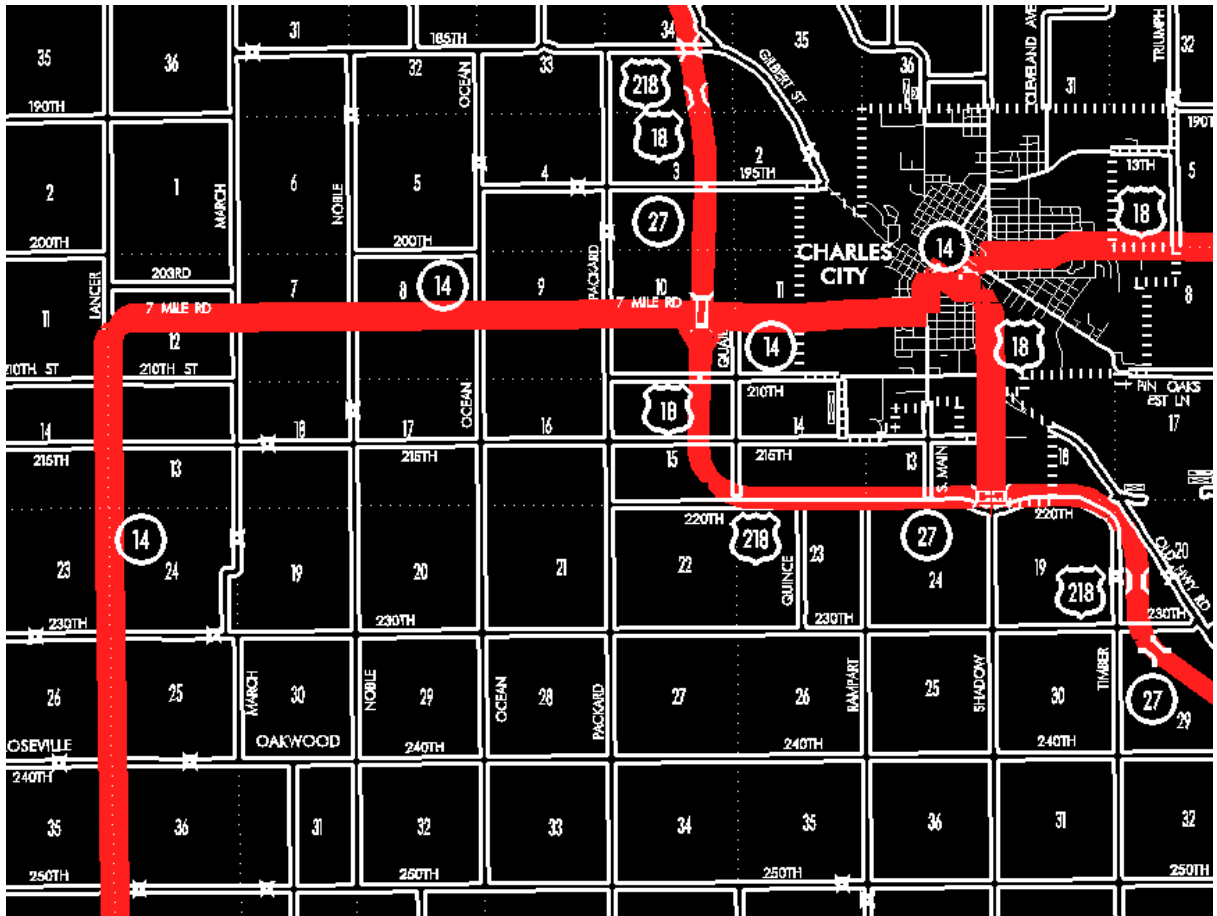
New Description – Iowa 14 and its extensions in Floyd County described as follows:

Beginning at the Floyd-Butler County line at a point near the SW Corner of Section 36-T94N-R17W, Floyd County (NW Corner of Section 1-T93N-R17W, Butler County); thence north following substantially the section line of Sections 36, 25, 24, 13, 12, and 1-T94N-R17W and Sections 36, 25, 24, 13, and 12-T95N-R17W to a point approximately 1,100 feet south of the W $\frac{1}{4}$ Corner of Section 12-T95N-R17W; thence curving in a northeasterly direction to a point approximately 1,100 feet east of the W $\frac{1}{4}$ Corner of Section 12-T95N-R17W; thence east following substantially the center section line of Section 12-T95N-R17W and Sections 7, 8, 9, 10, and 11-T95N-R16W to the west corporation line of Charles City connecting with 5th Street.

Charles City:

Beginning on 5th Street at the west corporation line; thence east on 5th Street to South Main Street; thence north and northeast on South Main Street to Gilbert Street; thence southeast on Gilbert Street to Brantingham Street (junction US 18).





OFFICIAL DESCRIPTION CHANGE

COUNTY: Floyd County

ROUTE: Iowa 14

STAFF ACTION NUMBER: S-97-715

APPROVAL DATE: 12-18-86

New Description – Iowa 14 and its extensions in Floyd County described as follows:

Beginning at the Floyd–Butler County line at a point near the SW Corner of Section 36–T94N–R17W, Floyd County (NW Corner of Section 1–T93N–R17W, Butler County); thence north following substantially the section

line of Sections 36, 25, 24, 13, 12, and 1-T94N-R17W and Sections 36, 25, 24, 13, (junction Iowa 147), and 12-T95N-R17W to a point approximately 1,100 feet south of the W ¼ Corner of Section 12-T95N-R17W; thence curving in a northeasterly direction to a point approximately 1,100 feet east of the W ¼ Corner of Section 12-T95N-R17W; thence east following substantially the center section line of Section 12-T95N-R17W and Sections 7, 8, 9, 10, and 11-T95N-R16W to the west corporation line of Charles City connecting with 5th Street.

Charles City:

Beginning on 5th Street at the west corporation line; thence east and northeast on 5th Street to Main Street; thence north and northeast on Main Street to Gilbert Street (junction US 18 and US 218).

COMMISSION ORDER

DIVISION: Planning & Research

COMMISSION ORDER NUMBER: PR-79-272

SUBMITTED BY: C.I. MacGillivray

MEETING DATE: 11-2-78

DISCUSSION/BACKGROUND:

Due to a review of our Primary Road System records, Iowa 14 in Floyd County, Iowa should be deleted and the new description should be officially included into the Primary Road System.

Iowa 14 begins at the Floyd-Butler County line approximately 6 ½ miles southeast of Marble Rock and travels northerly and easterly terminating in Charles City, Iowa.

PROPOSAL/ACTION RECOMMENDATION:

Locate Iowa 14 and its extension in Floyd County as follows:

Beginning at the Floyd–Butler County line at a point near the SW Corner of Section 36–T94N–R17W, Floyd County (NW Corner of Section 1–T93N–R17W, Butler County); thence north following substantially the section line of Sections 36, 25, 24, 13, 12, and 1–T94N–R17W and Sections 36, 25, 24, 13, and 12–T95N–R17W to a point approximately 1100 feet south of the W $\frac{1}{4}$ Corner of Section 12–T95N–R17W; thence curving in a northeasterly direction to a point approximately 1100 feet east of the W $\frac{1}{4}$ Corner of Section 12–T95N–R17W; thence east following substantially the center section line of Section 12–T95N–R17W and Sections 7, 8, 9, 10, and 11–T95N–R16W to the west corporation line of the City of Charles City connecting with an unnamed street.

Charles City:

Beginning at the west corporation line connecting with an unnamed street; thence easterly, northerly, and northeasterly to Gilbert Street (junction US 18 and US 218).

NOW, THEREFORE: Be it resolved that the Iowa Department of Transportation approve the location of Iowa 14 in Floyd County, Iowa.

NOTE: To become effective upon the adoption of this resolution.

REVISED 12-18-86

OFFICIAL DESCRIPTION CHANGE

COUNTY: Floyd

ROUTE: Iowa 14

APPROVAL DATE: 4-14-37

Beginning on the Floyd-Butler County line, at a point near the SE Corner of Section 35-T94N-R17W, Floyd County (NE Corner of Section 2-T93N-R17W, Butler County); thence north following substantially the section line to a point approximately 1100 feet south of the W $\frac{1}{4}$ Corner of Section 12-T95N-R17W; thence curving in a northeasterly direction to a point approximately 1100 feet east of the W $\frac{1}{4}$ Corner of Section 12-T95N-R17W; thence east following substantially the quarter section line of the west corporation line of the City of Charles City, connecting with Fifth Street.

OFFICIAL DESCRIPTION CHANGE

COUNTY: Floyd

CITY: Charles City

ROUTE: Iowa 14

APPROVAL DATE: 2-5-36

Commencing on 5th Street at the west corporation line; thence easterly on Fifth Street to Main Street; thence northerly and northeasterly on Main Street to Gilbert Street.