

OFFICIAL DESCRIPTION CHANGE

OFFICE: Transportation Data

EFFECTIVE DATE: 11-14-2007

ENTERED BY: Darlene Bovee

ENTERED DATE: 01-16-2008

New Description – Iowa 16 and its extensions in Wapello County described as follows:

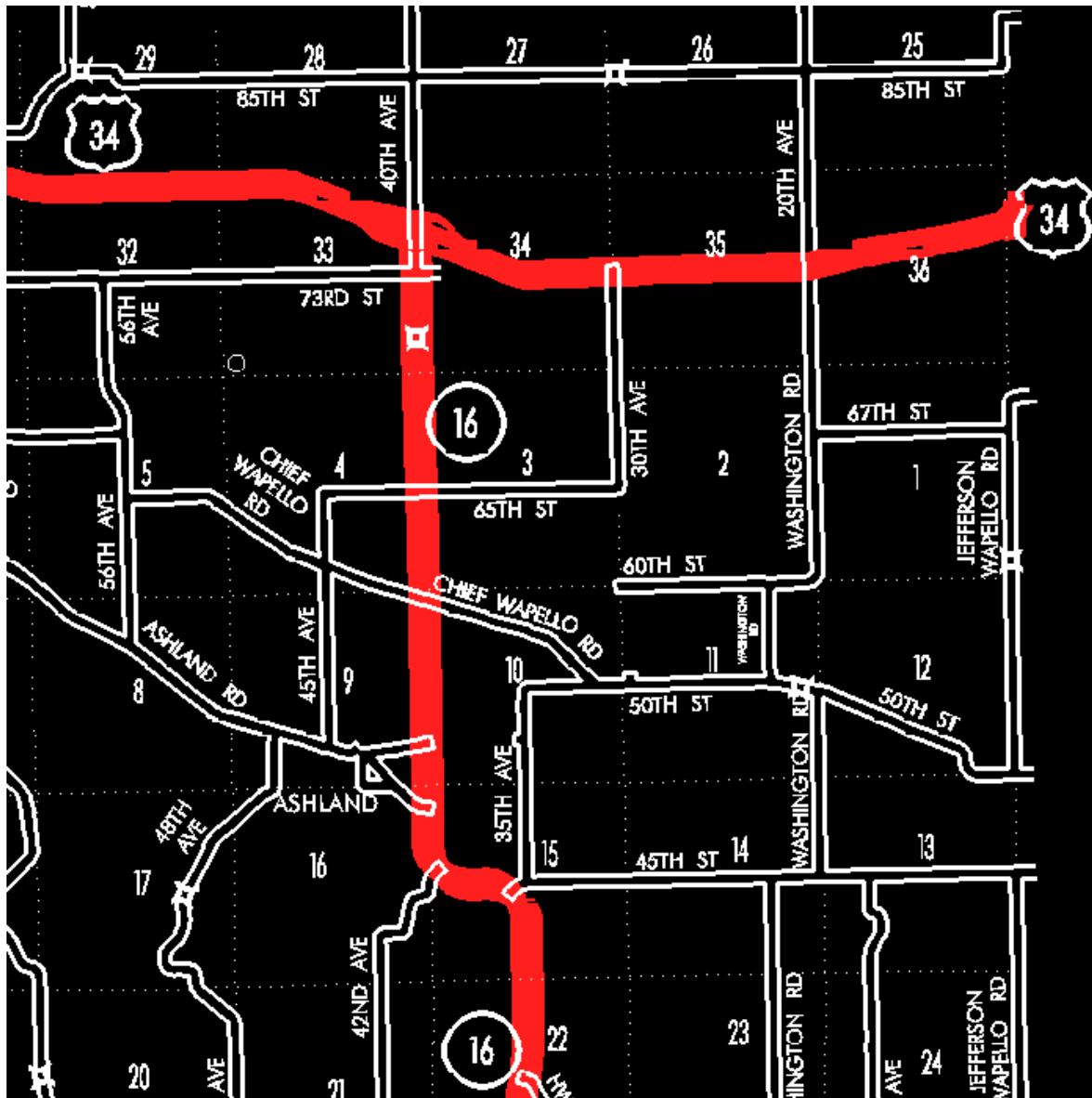
Beginning at a point approximately 1140 feet south of the NW Corner Section 34-T72N-R12W (north ramp of interchange with US 34); thence southerly following substantially the section line of Section 34-T72N-R12W and Sections 3, 10, and 15-T71N-R12W to a point approximately 600 feet north of the W $\frac{1}{4}$ Corner Section 15-T71N-R12W; thence curving southeasterly through said Section 15 to a point approximately 600 feet east of the W $\frac{1}{4}$ Corner said Section 15; thence easterly to a point approximately 600 feet west of the center said Section 15; thence curving southeasterly to a point approximately 600 feet south of the center said Section 15; thence southerly following substantially the center section line of Sections 15 and 22-T71N-R12W to a point approximately 300 feet north of the center of Section 22-T71N-R12W; thence southwesterly through Sections 22 and 27-T71N-R12W to the west corporation line of the City of Eldon connecting with Elm Street (approximately 1750 feet south and 1670 feet east of the NW Corner Section 27-T71N-R12W).

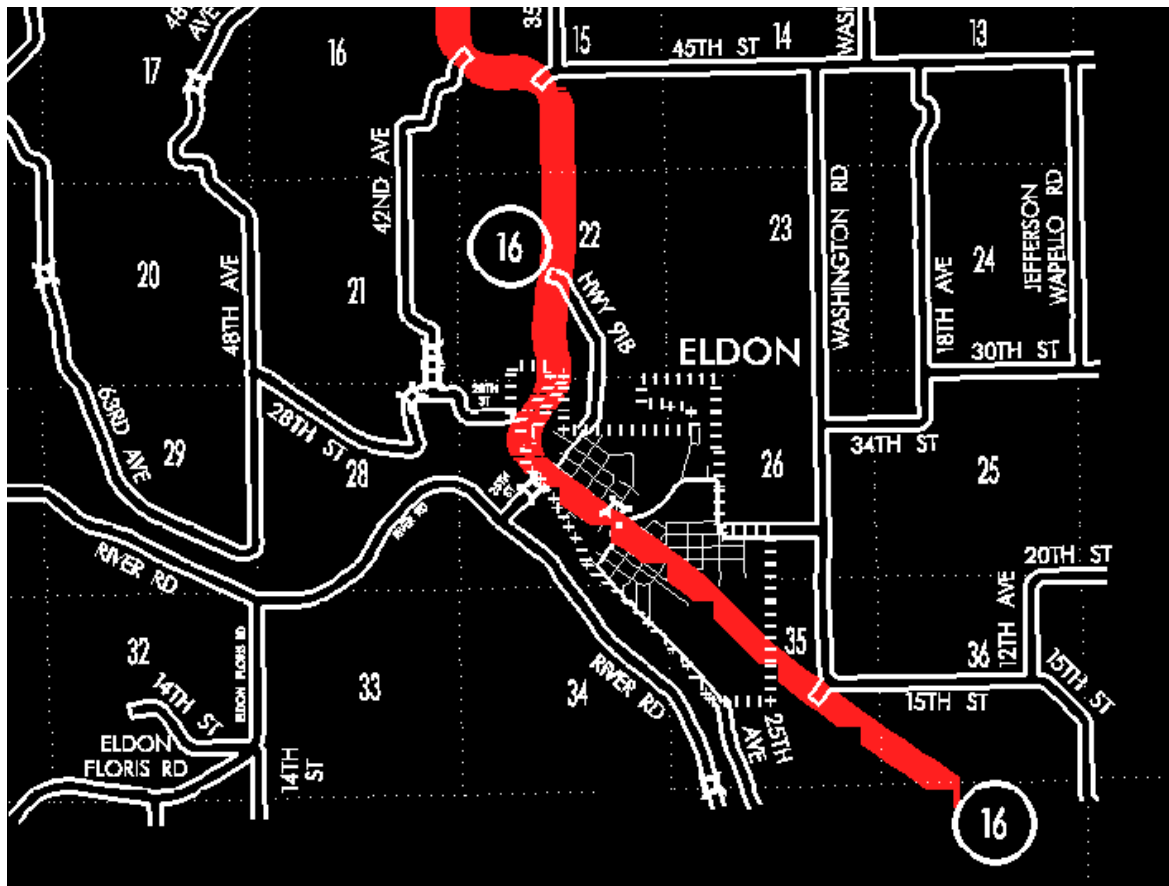
Eldon:

Beginning on the west corporation line connecting with Elm Street; thence southeasterly on Elm Street to the east corporation line (approximately 2060 feet south of the N $\frac{1}{4}$ Corner Section 35-T71N-R12W).

Beginning again on the east corporation line of the City of Eldon connecting with Elm Street; thence southeasterly through Sections 35 and 36-T71N-R12W to the Wapello-Davis County line at a point approximately 900 feet west of the S $\frac{1}{4}$ Corner Section 36-T71N-R12W, Wapello County (N $\frac{1}{4}$ Corner Section

1-T70N-R12W, Davis County).





OFFICIAL DESCRIPTION CHANGE

OFFICE: Transportation Data

EFFECTIVE DATE: 1984

ENTERED BY: Stefani Wonders

ENTERED DATE: 08-22-2006

DISCUSSION/BACKGROUND:

Beginning at a point near the E ¼ Corner Section 33-T72N-R12W (junction US 34); thence southerly following substantially the section line of Section 34-T72N-R12W and Sections 3, 10, and 15-T71N-R12W to a point approximately 600 feet north of the W ¼ Corner Section 15-T71N-R12W; thence curving southeasterly through said Section 15 to a point approximately

600 feet east of the W ¼ Corner said Section 15; thence easterly to a point approximately 600 feet west of the center said Section 15; thence curving southeasterly to a point approximately 600 feet south of the center said Section 15; thence southerly following substantially the section line of Sections 15 and 22-T71N-R12W to a point approximately 300 feet north of the center of Section 22-T71N-R12W; thence southwesterly through Sections 22 and 27-T71N-R12W to the west corporation line of the City of Eldon connecting with Elm Street (approximately 1873 feet south and 2223 feet east of the NW Corner Section 27-T71N-R12W).

Eldon:

Beginning on the west corporation line connecting with Elm Street; thence southeasterly on Elm Street to the east corporation line connecting with an unnamed street (approximately 1911 feet south and 320 feet west of the N ¼ Corner Section 35-T71N-R12W).

Beginning again on the edit corporation line of the City of Eldon connecting with an unnamed street; thence southeasterly through Sections 35 and 36-T71N-R12W to the Wapello-Davis County line at a point approximately 900 feet west of the S ¼ Corner Section 36-T71N-R12W, Wapello County (N ¼ Corner Section 1-T70N-R12W, Davis County).

COMMISSION ORDER

DIVISION: Planning & Research

COMMISSION ORDER NUMBER: PR-79-272

SUBMITTED BY: C.I. MacGillivray

MEETING DATE: 11-2-78

DISCUSSION/BACKGROUND:

Iowa 16 begins at US 34 approximately 3 ½ miles east of Agency, and travels southerly and southeasterly via Eldon to the Wapello–Davis County line approximately ¾ mile west of the SE Corner of Wapello County, Iowa.

Due to a review of our Primary Road System Records Iowa 16 in Wapello County should be deleted and the new description added should be officially included into the Primary System.

PROPOSAL/ACTION RECOMMENDATION:

It is recommended that the old description of Iowa 16 in Wapello County be deleted and the new description, as referred in the attached detailed description, be included in the Primary Road System effective upon the adoption of this resolution.

Locate Iowa 16 and its extension in Wapello County as follows:

Beginning at a point near the E ¼ Corner Section 33–T72N–R12W (junction US 34); thence southerly following substantially the section line of Section 34–T72N–R12W and Sections 3, 10, and 15–T71N–R12W to a point approximately 600 feet north of the W ¼ Corner Section 15–T71N–R12W; thence curving southeasterly through said Section 15 to a point approximately 600 feet east of the W ¼ Corner said Section 15; thence easterly to a point approximately 600 feet west of the center said Section 15; thence curving southeasterly to a point approximately 600 feet south of the center said Section 15; thence southerly following substantially the section line of Sections 15 and 22–T71N–R12W to a point approximately 300 feet north of the center of Section 22–T71N–R12W; thence in a southeasterly and southwesterly direction through Sections 22 and 27–T71N–R12W to the north corporation line of the City of Eldon connecting with an unnamed street.

Eldon:

Beginning on the north corporation line connecting with an unnamed street; thence southwesterly and southeasterly to the east corporation line connecting

with an unnamed street.

Beginning again on the edit corporation line of the City of Eldon connecting with an unnamed street thence southeasterly through Sections 35 and 36-T71N-R12W to the Wapello-Davis County line at a point approximately 900 feet west of the S $\frac{1}{4}$ Corner Section 36-T71N-R12W, Wapello County (N $\frac{1}{4}$ Corner Section 1-T70N-R12W, Davis County).

OFFICIAL DESCRIPTION CHANGE

COUNTY: Wapello

ROUTE: Iowa 16

APPROVAL DATE: 5-29-63

Beginning on the Davis-Wapello County line at a point 917 feet west of the S $\frac{1}{4}$ Corner of Section 36-T71N-R12W, Wapello County (N $\frac{1}{4}$ Corner of Section 1-T70N-R12W, Davis County); thence northwesterly along the north side of the Chicago, Rock Island, and Pacific Railroad to the east corporation line of the Town of Eldon.

Beginning again on the north corporation line of the Town of Eldon connecting with Ninth Street; thence in a northeasterly, northerly and northwesterly direction through Sections 27 and 22-T71N-R12W to a point approximately 300 feet north of the center of Section 22-T71N-R12W; thence north to a point approximately 600 feet south of the center of Section 15-T71N-R12W; thence curving in a northwesterly direction to a point approximately 600 feet west of the center of Section 15-T71N-R12W; thence west to a point approximately 600 feet east of the W $\frac{1}{4}$ Corner of Section 15-T71N-R12W; thence curving in a northwesterly direction to a point approximately 600 feet north of the W $\frac{1}{4}$ Corner of Section 15-T71N-R12W; thence north following substantially the section line to a point near the E $\frac{1}{4}$ Corner of Section 33-T72N-R12W.

OFFICIAL DESCRIPTION CHANGE

COUNTY: Wapello

CITY OF: Eldon

ROUTE: Iowa 16

APPROVAL DATE: 4-29-41

Beginning on the east corporation line; thence northwesterly to the junction of Eldon Street and Elm Street; thence northwesterly on Elm Street to 9th Street; thence northeasterly on 9th Street to the north corporation line.