

OFFICIAL DESCRIPTION CHANGE

OFFICE: Transportation Data

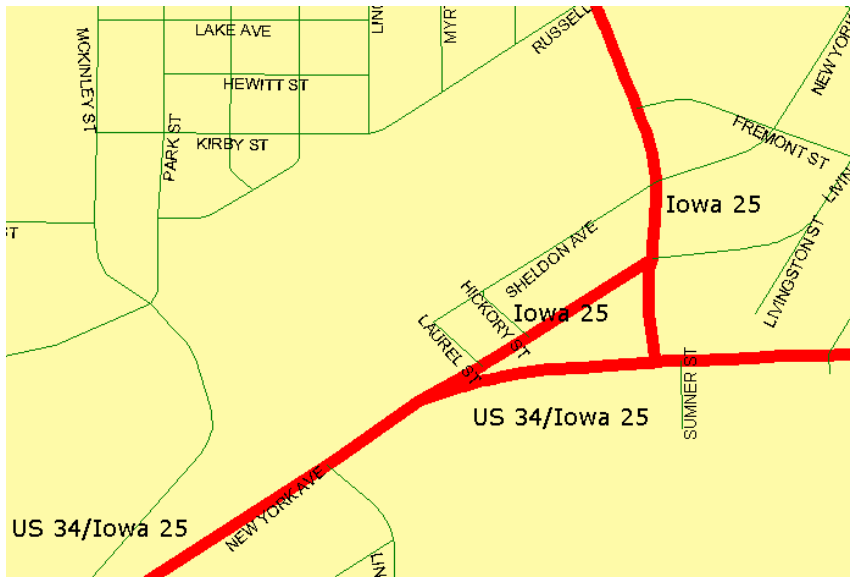
EFFECTIVE DATE: 12-17-2001

ENTERED BY: Stefani Wonders

ENTERED DATE: 08-31-2006

DISCUSSION/BACKGROUND:

Transfer of jurisdiction agreement number 2001-16-083, between Creston and the Iowa Department of Transportation, transferred that portion of Iowa 25 from the south junction US 34 to the north junction of Iowa 25 (New York Avenue) to city jurisdiction on December 17, 2001.



PROPOSAL/ACTION RECOMMENDATION:

New Description – Iowa 25 and its extension in Union County described as follows:

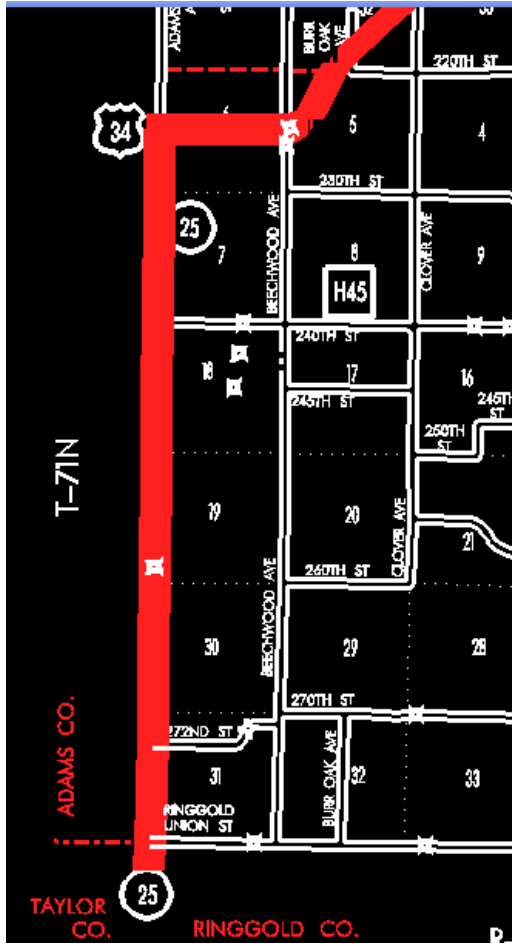
Beginning at a point near the SW Corner Section 31-T71N-R31W Union County (NW Corner Section 6-T70N-R31W Ringgold County) (NE Corner Section 1-T70N-R32W Taylor County) (SE Corner Section 36-T71N-R32W Adams County); then north along the Union-Adams County line following

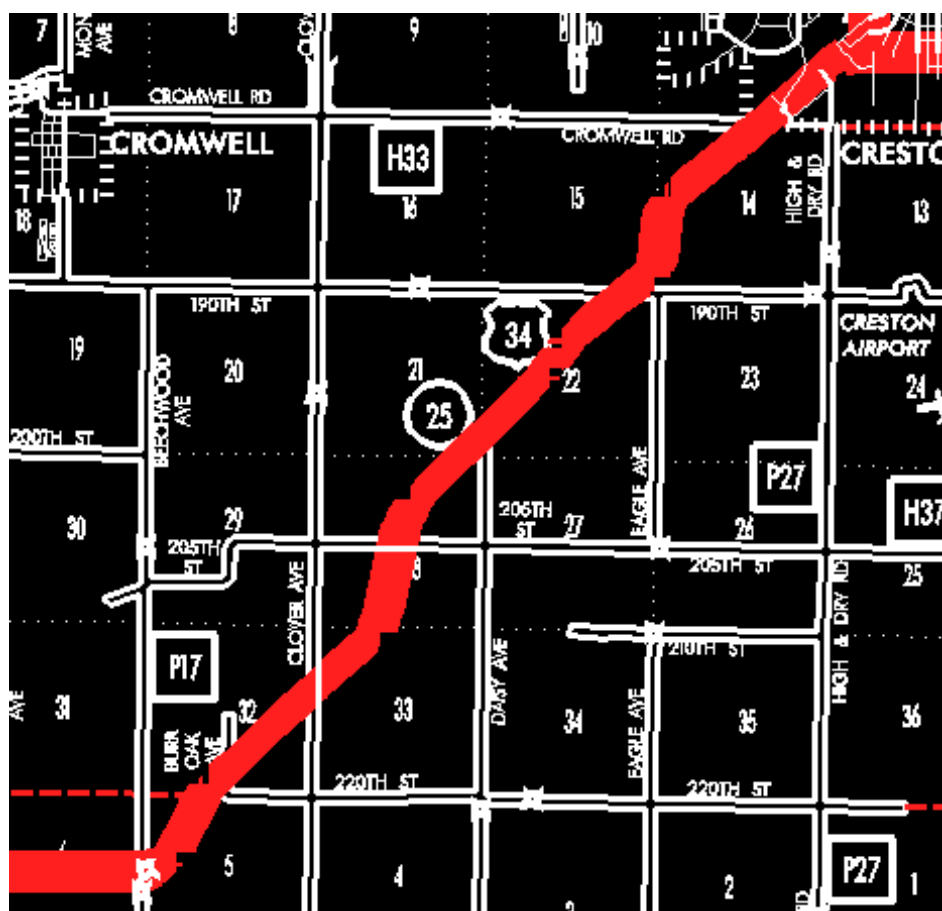
substantially the section line of Sections 31, 30, 19, 18, 7 and 6-T71N-R31W to a point approximately 2,600 feet north of the SW Corner Section 6-T71N-R31W (west junction US 34); then east following substantially the center section line said Section 6 to a point near the E $\frac{1}{4}$ Corner Section 6-T71N-R31W; then curving in a northeasterly direction through Section 5-T71N-R31W and Sections 32, 33, 28, 21, 22 and 15-T72N-R31W to a point approximately $\frac{1}{4}$ mile north of the SE Corner Section 15-T72N-R31W; then in a northerly and northeasterly direction through Section 14-T72N-R31W to the south corporation line of Creston, connecting with New York Avenue.

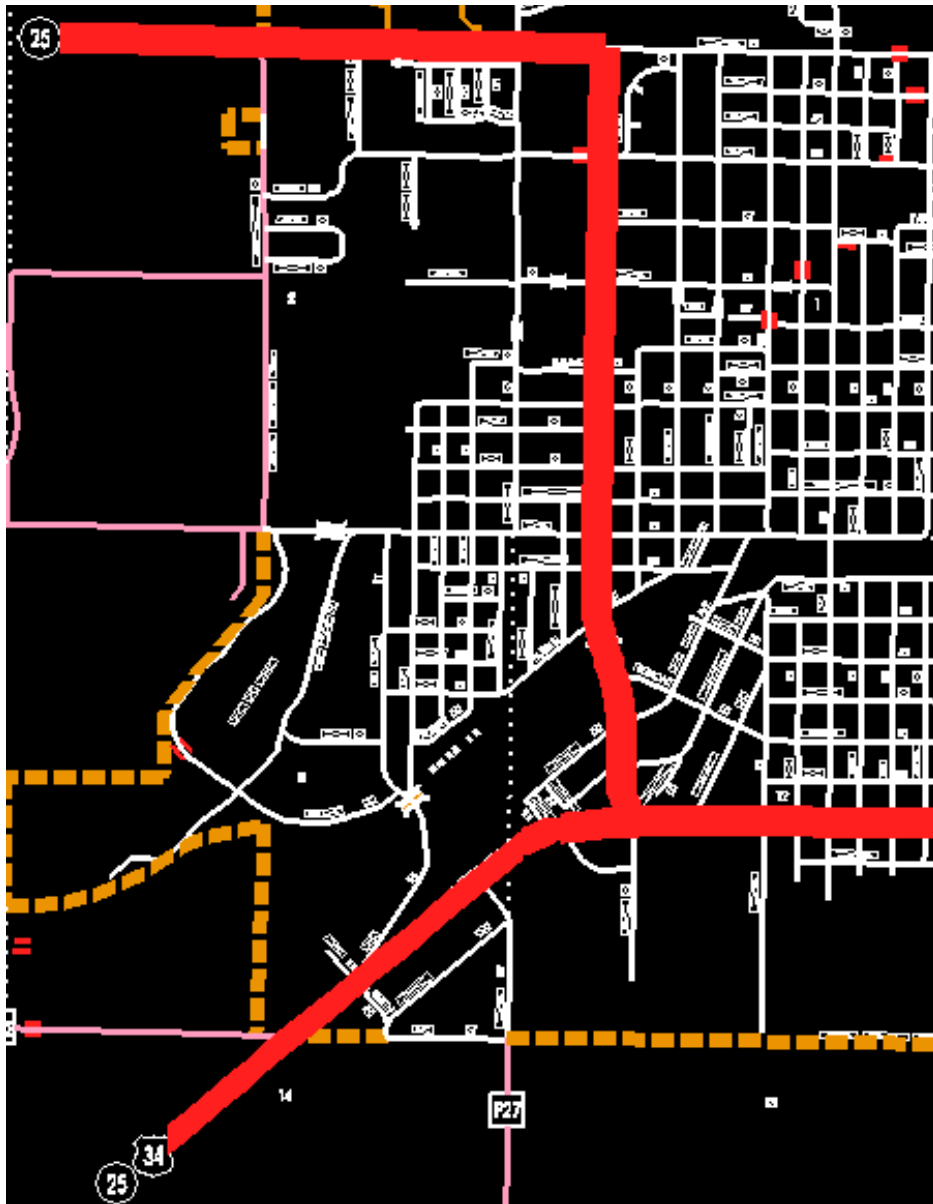
Creston:

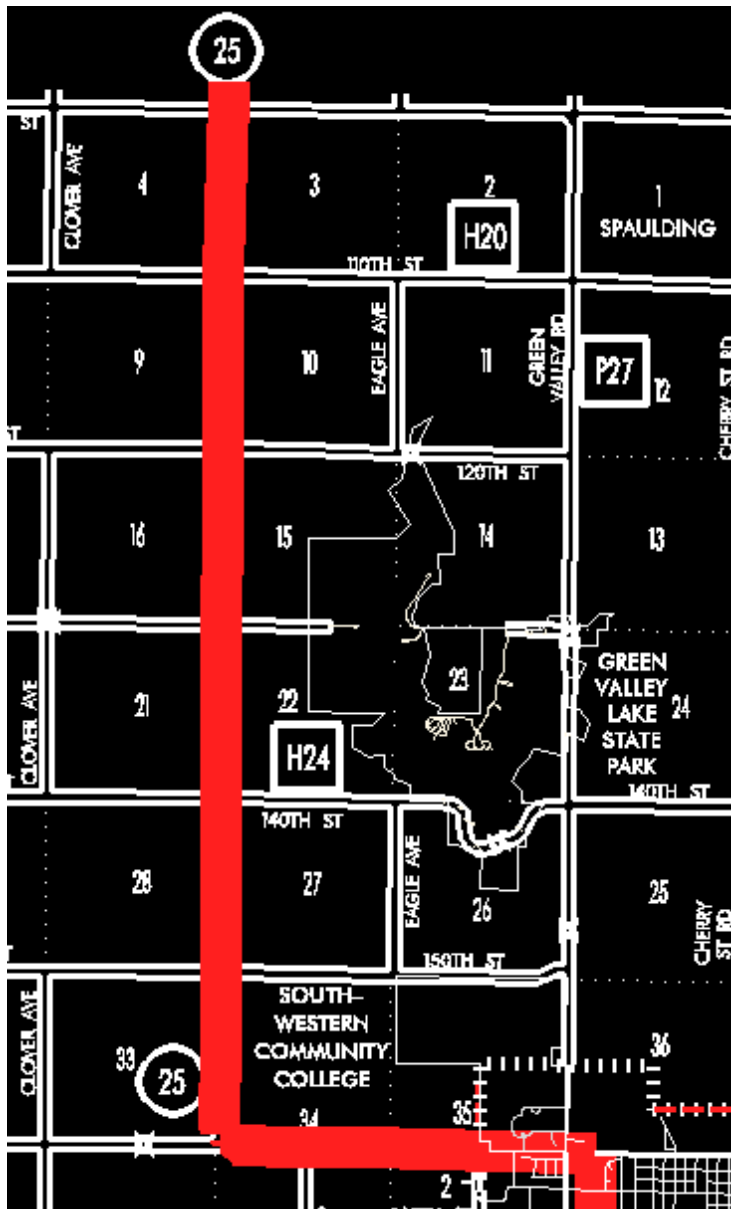
Beginning on New York Avenue at the south corporation line; then northeast on New York Avenue to Sumner Avenue; then north on Sumner Avenue to Townline Street; then west on Townline Street to the west corporation line.

Beginning again on the west corporation line of Creston connecting with Townline Street; then west following substantially the section line of Sections 2 and 3-T72N-R31W to a point approximately 600 feet east of the SW Corner Section 34-T73N-R31W; then curving in a northwesterly direction through said Section 34 to a point approximately 600 feet north of the SW Corner said Section 34; then north following substantially the section line of Sections 34, 27, 22, 15, 10 and 3-T73N-R31W to the Union-Adair County line at a point near the NW Corner Section 3-T73N-R31W Union County (SW Corner Section 34-T74N-R31W Adair County).









OFFICIAL DESCRIPTION CHANGE

COUNTY: Union

ROUTE: Iowa 25

STAFF ACTION NUMBER: S-87-1507

APPROVAL DATE: 5-13-87

New Description – Iowa 25 and its extension in Union County described as follows:

Beginning at a point near the SW Corner Section 31-T71N-R31W Union County (NW Corner Section 6-T70N-R31W Ringgold County) (NE Corner Section 1-T70N-R32W Taylor County) (SE Corner Section 36-T71N-R32W Adams County); then north along the Union-Adams County line following substantially the section line of Sections 31, 30, 19, 18, 7 and 6-T71N-R31W to a point approximately 2,600 feet north of the SW Corner Section 6-T71N-R31W (west junction US 34); then east following substantially the center section line said Section 6 to a point near the E $\frac{1}{4}$ Corner Section 6-T71N-R31W; then curving in a northeasterly direction through Section 5-T71N-R31W and Sections 32, 33, 28, 21, 22 and 15-T72N-R31W to a point approximately $\frac{1}{4}$ mile north of the SE Corner Section 15-T72N-R31W; then in a northerly and northeasterly direction through Section 14-T72N-R31W to the south corporation line of Creston, connecting with New York Avenue.

Creston:

Beginning on New York Avenue at the south corporation line; then northeast on New York Avenue to Sumner Avenue; then north on Sumner Avenue to Townline Street; then west on Townline Street to the west corporation line.

Beginning again on the west corporation line of Creston connecting with Townline Street; then west following substantially the section line of Sections 2 and 3-T72N-R31W to a point approximately 600 feet east of the SW Corner Section 34-T73N-R31W; then curving in a northwesterly direction through said Section 34 to a point approximately 600 feet north of the SW Corner said Section 34; then north following substantially the section line of Sections 34, 27, 22, 15, 10 and 3-T73N-R31W to the

Union–Adair County line at a point near the NW Corner Section 3–T73N–R31W Union County (SW Corner Section 34–T74N–R31W Adair County).

COMMISSION ORDER

DIVISION: Planning & Research

COMMISSION ORDER NUMBER: PR–79–272

SUBMITTED BY: C.I. MacGillivray

MEETING DATE: 11–2–78

TITLE: Iowa 25, Union County, Iowa

DISCUSSION/BACKGROUND:

Iowa 25 begins on the Union–Ringgold County line at the SW Corner of Union County, and travels in a general northeasterly and northwesterly direction via Creston to the Union–Adair County line approximately 3 miles east of the NW Corner of Union County, Iowa.

Due to a review of our Primary Road System Records Iowa 25 in Union County should be deleted and the new description added should be officially included into the Primary System.

PROPOSAL/ACTION RECOMMENDATION:

It is recommended that the old description of Iowa 25 in Union County be deleted and the new description, as referred in the attached detailed description, be included into the Primary Road System effective upon the adoption of this resolution.

Locate Iowa 25 and its extension in Union County as follows:

Beginning at a point near the SW Corner Section 31-T71N-R31W Union County (NW Corner Section 6-T70N-R31W Ringgold County) (NE Corner Section 1-T70N-R32W Taylor County) (SE Corner Section 36-T71N-R32W Adams County); thence north along the Union-Adams County line following substantially the section line of Sections 31, 30, 19, 18, 7, and 6-T71N-R31W to a point approximately 2600 feet north of the SW Corner Section 6-T71N-R31W (west junction US 34); thence easterly following substantially the center section line said Section 6 to a point near the E $\frac{1}{4}$ Corner Section 6-T71N-R31W; thence curving in a northeasterly direction through Section 5-T71N-R31W to a point on the west side of the Burlington Northern Railroad approximately 400 feet north and 900 feet east of the E $\frac{1}{4}$ Corner Section 6-T71N-R31W; thence in a northeasterly direction along the west side of said railroad and substantially parallel thereto through Section 5-T71N-R31W and Sections 32, 33, 28, 21, 22, and 15-T72N-R31W to a point approximately $\frac{1}{4}$ mile north of the SE Corner Section 15-T72N-R31W; thence in a northerly and northeasterly direction through Section 14-T72N-R31W to the south corporation line of the City of Creston connecting with an unnamed street.

Creston:

Beginning on the south corporation line connecting with an unnamed street; thence northeasterly, northerly, and westerly to the west corporation line connecting with an unnamed street.

Beginning again on the west corporation line of the City of Creston connecting with an unnamed street; thence westerly following substantially the section line of Sections 2 and 3-T72N-R31W to a point approximately 600 feet east of the SW Corner Section 34-T73NR31W; thence curving in a northwesterly direction through said Section 34 to a point approximately 600 feet north of the SW Corner said Section 34; thence northerly following substantially the section line of Sections 34, 27, 22, 15, 10, and 3-T73N-R31W to the Union-Adair County line at a point near the NW Corner Section 3-T73N-R31W Union County (SW Corner Section 34-T74N-R31W Adair County).

REVISED: 5-13-87

OFFICIAL DESCRIPTION CHANGE

COUNTY: Union

ROUTE: Iowa 25

APPROVAL DATE: 5-29-63

Beginning at a point near the SW Corner Section 31-T71N-R31W Union County (NW Corner Section 6-T70N-R31W Ringgold County) (NE Corner Section 1-T70N-R32W Taylor County) (SE Corner Section 36-T71N-R32W Adams County); thence north along the Union-Adams County line to a point near the W $\frac{1}{4}$ Corner Section 6-T71N-R31W Union County (E $\frac{1}{4}$ Corner Section 1-T71N-R32W Adams County); thence east following substantially the quarter section line to a point near the E $\frac{1}{4}$ Corner Section 6-T71N-R31W; thence curving in a northeasterly direction to a point on the west side of the Chicago, Burlington & Quincy Railroad approximately 400 feet north and 900 feet east of the E $\frac{1}{4}$ Corner Section 6-T71N-R31W; thence in a northeasterly direction along the west side of said railroad and substantially parallel thereto through Section 5-T71N-R31W and Sections 32, 33, 28, 21, 22 and 15-T72N-R31W to a point approximately $\frac{1}{4}$ mile north of the SE Corner Section 15-T72N-R31W; thence in a northerly and northeasterly direction through Section 14-T72N-R31W to the south corporation line of the City of Creston connecting with New York Avenue.

Beginning again on the west corporation line of the City of Creston connecting with Town Line Street; thence west following substantially the section line to a point approximately 600 feet east of the SW Corner Section 34-T73N-R31W; thence curving in a northwesterly direction to a point approximately 600 feet north of the SW Corner Section 34-T73N-R31W; thence north following substantially the section line to

the Union–Adair County line at a point near the NW Corner Section 3–T73N–R31W Union County (SW Corner Section 34–T74N–R31W Adair County).

REVISED: 6–13–74

OFFICIAL DESCRIPTION CHANGE

COUNTY: Union

CITY OF: Creston

ROUTE: Iowa 25

APPROVAL DATE: 12–8–36

Commencing on New York Avenue at the south corporation line; thence northeasterly on New York Avenue to Summer Avenue; thence northerly on Summer Avenue to a point approximately 400 feet north of Prairie Street; thence northwesterly to Town Line Street; thence west on Town Line Street to the west corporation line.

Also

A connecting street which extends 650 feet between Taylor Street (US 34) and New York Avenue (Iowa 25) is also a primary road extension.

REVISED: 6–13–74