

**OFFICE:** Transportation Data  
**EFFECTIVE DATE:** 03-15-2005  
**ENTERED BY:** Stefani Wonders  
**ENTERED DATE:** 12-31-2003

**DISCUSSION/BACKGROUND:**

Due to the relocation of Iowa 27 (Avenue of the Saints), the description below reflects the changes.

**PROPOSAL/ACTION RECOMMENDATION:**

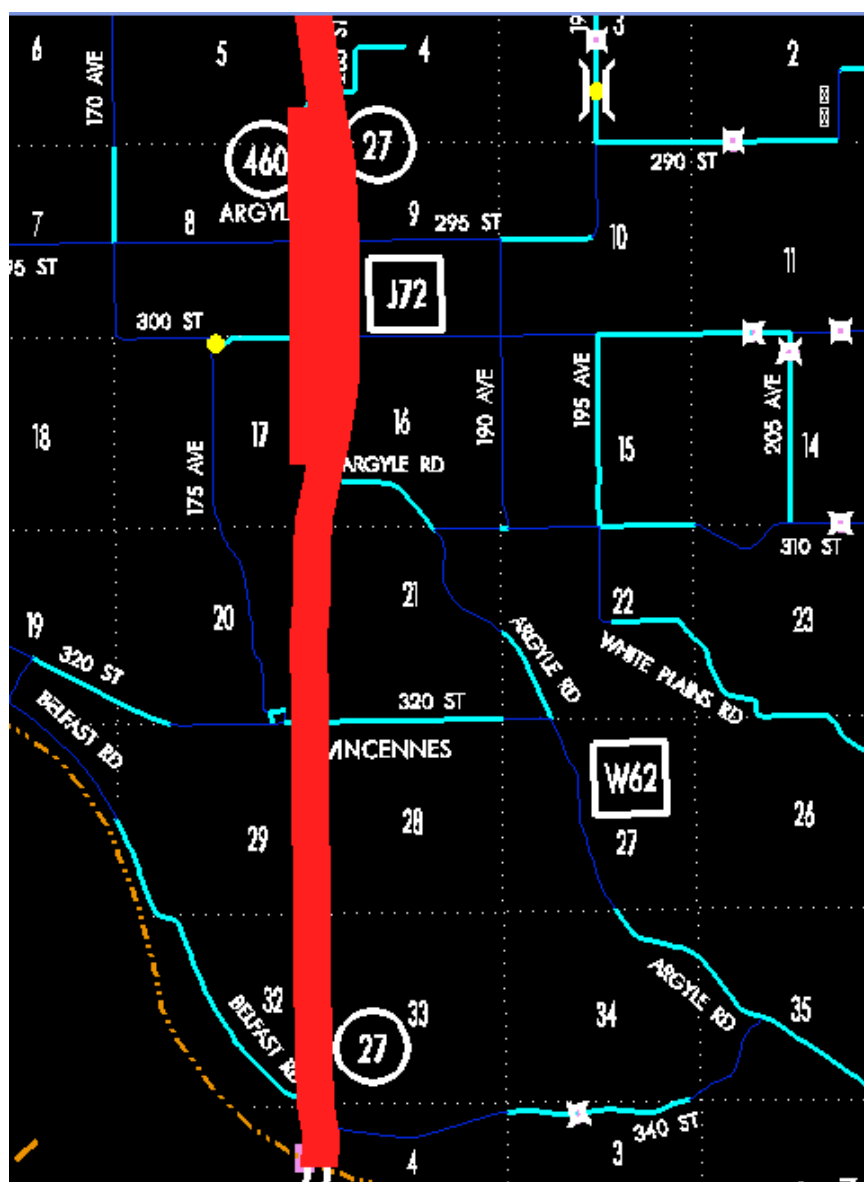
New Description – Iowa 27 (Avenue of the Saints) and its extensions in Lee County described as follows:

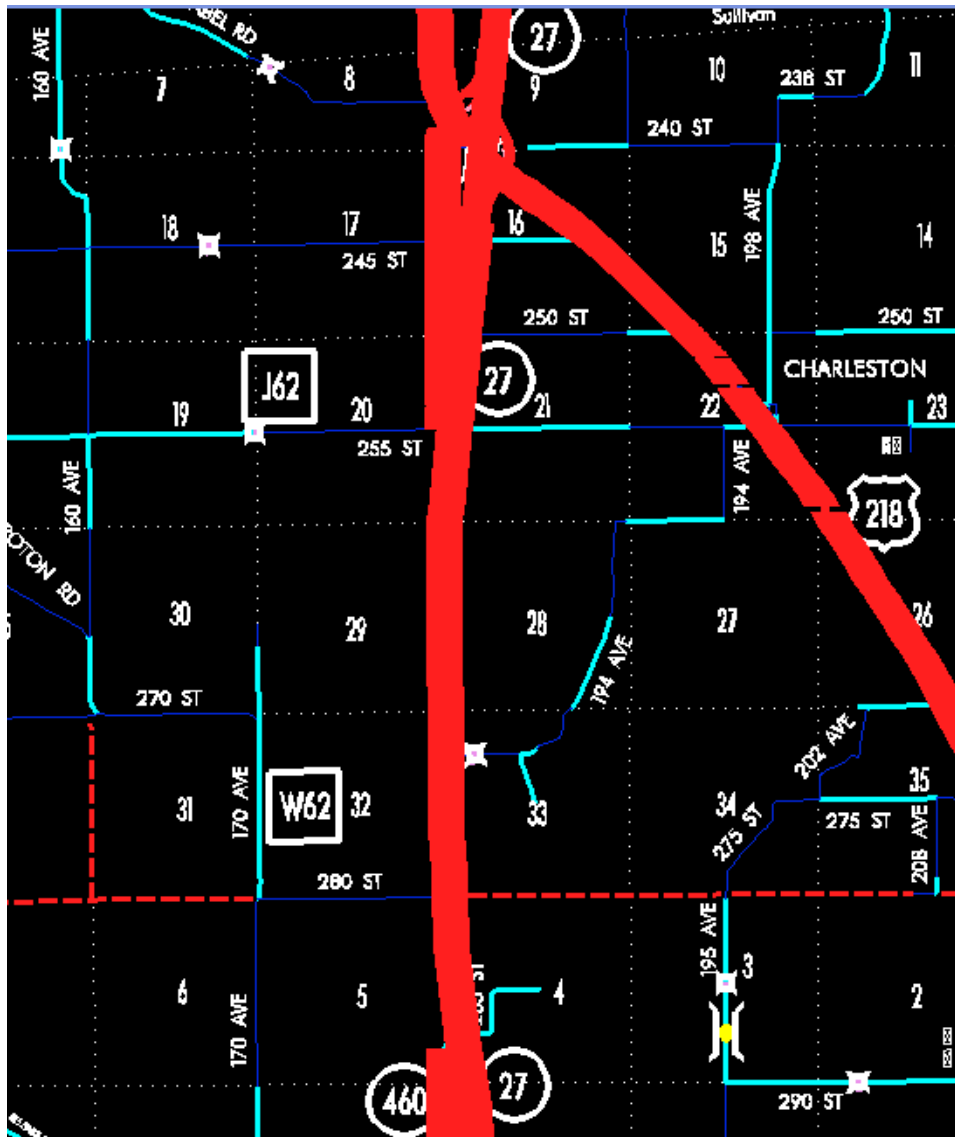
Beginning on the Iowa-Missouri State line at a point approximately 1600 feet south and 100 feet east of the NW Corner Section 4-T65N-R6W; thence northerly through said Section 4 to a point near the NW Corner Section 4-T65N-R6W; thence northerly following substantially the section line of Sections 33, 28, and 21-T66N-R6W to approximately the NW Corner of said Section 21; thence northeasterly, northerly, and northwesterly through Sections 16, 9 and 4-T66N-R6W to approximately 1415 feet south of the NW Corner of said Section 4; thence northerly following substantially the west section line of Sections 4-T66N-R6W and Sections 33, 28, and 21-T67N-R6W to approximately 1212 feet north of the SW Corner of said Section 21; thence northeasterly and northerly through Sections 21, 16, 9, and 4-T67N-R6W to a point near the N  $\frac{1}{4}$  Corner of said Section 4; thence northwesterly through said Section 4 and Sections 33-T68N-R6W to the east corporation line of Donnellson (approximately 1285 feet east and 660 feet south of the NW Corner of said Section 33) connecting with an unnamed street.

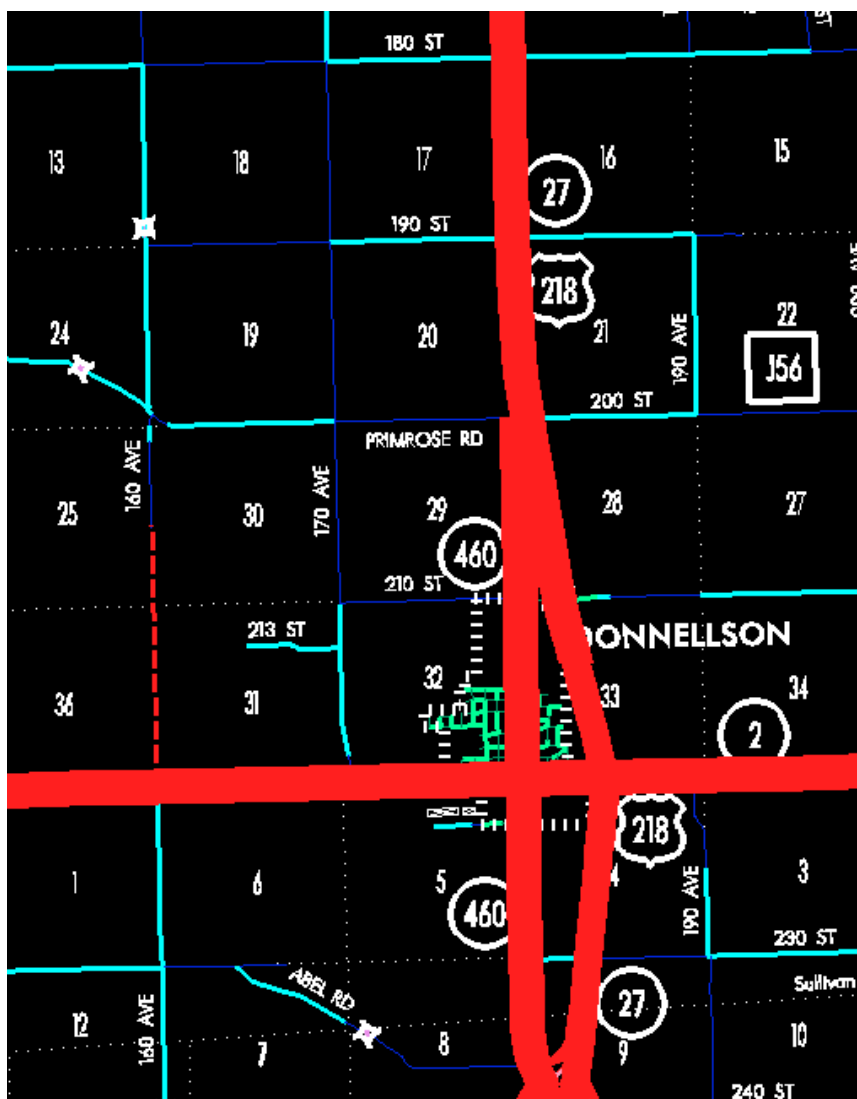
Donnellson:

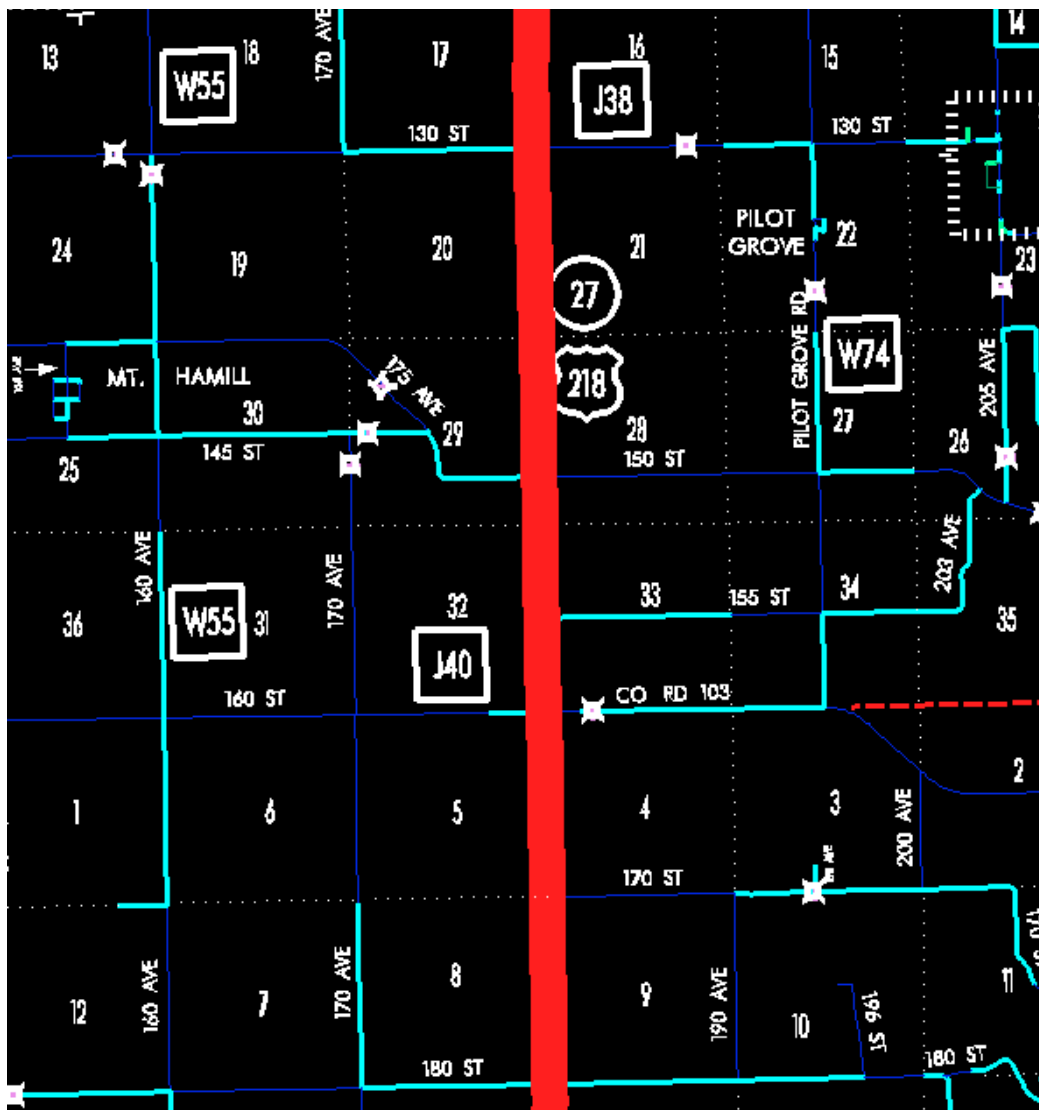
Beginning on the east corporation line connecting with an unnamed street; thence northwesterly to the north corporation line (approximately 1129 feet east of the NW Corner of Section 33-T68N-R6W).

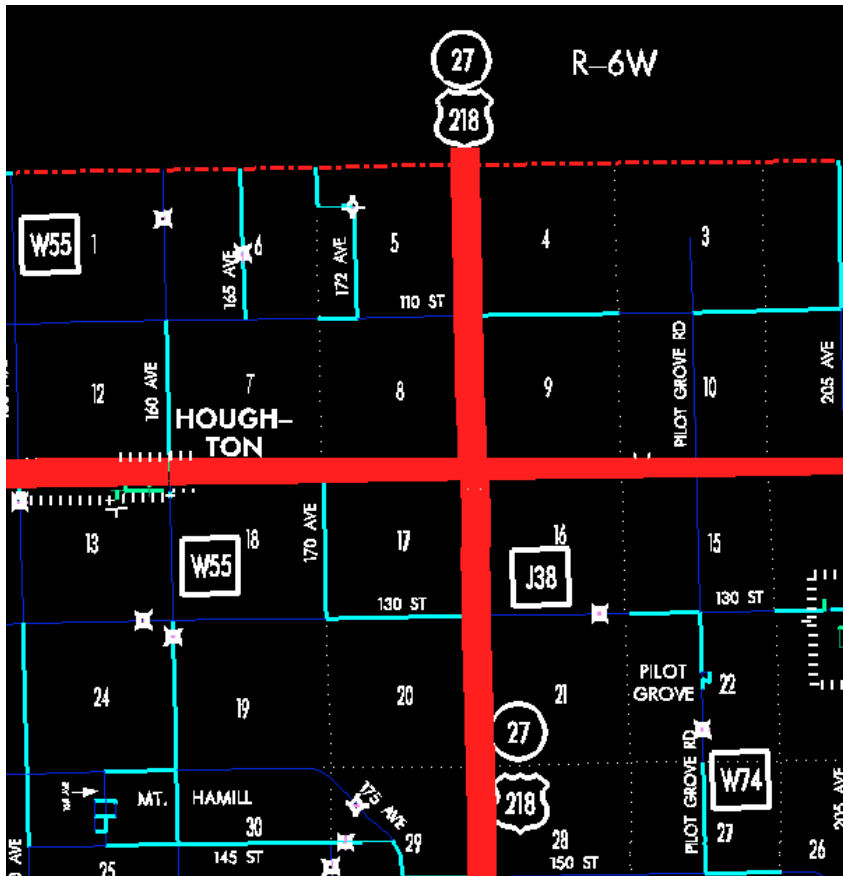
Beginning again on the north corporation line of Donnellson connecting with an unnamed street; thence northwesterly through Sections 28 and 21-T68N-R6W to a point approximately 1910 feet north of the SW Corner of said Section 21; thence northerly following substantially the west section line of Sections 21, 16, 9, and 4-T68N-R6W and Sections 33, 28, 21, 16, 9, and 4-T69N-R6W to the Lee-Henry County line, at a point near the NW Corner of Section 4-T69N-R6W, Lee County (SW Corner of Section 33-T70N-R6W, Henry County).











#### STAFF ACTION

OFFICE: Transportation Inventory

STAFF ACTION NUMBER: S-02-1128

SUBMITTED BY: Peggi Knight

SUBMITTAL DATE: 06-12-2002

#### DISCUSSION/BACKGROUND:

New Description – Iowa 27 (Avenue of the Saints) and its extensions in Lee County described as follows:

Beginning on the Iowa-Missouri State line at a point approximately 1600 feet south and 100 feet east of the NW Corner Section 4-T65N-R6W;

thence northerly through said Section 4 to a point near the NW Corner Section 4-T65N-R6W; thence northerly following substantially the section line of Sections 33, 28, 21, 16, 9 and 4-T66N-R6W and Sections 33, 28, 21, 16 and 9-T67N-R6W to a point approximately 850 feet north of the SW Corner Section 9-T67N-R6W (junction US 218); thence northwesterly to a point approximately 2800 feet south of the NW Corner Section 9-T67N-R6W; thence northerly through the east part of Section 8-T67N-R6W to a point near the NE Corner said Section 8; thence north following substantially the section line of Section 4-T67N-R6W to the south corporation line of Donnellson connecting with Main Street.

Donnellson:

Beginning on Main Street at the south corporation line; thence north on Main Street to the north corporation line.

Beginning again on the north corporation line of Donnellson connecting with Main Street; thence north following substantially the section line of Sections 28, 21 and 16-T68N-R6W to a point approximately 1100 feet north of the SW Corner of said Section 16; thence north through the east part of Sections 17, 8, and 5-T68N-R6W to a point approximately 1600 feet north of the SE Corner Section 5-T68N-R6W; thence north following substantially the section line of Section 4-T68N-R6W (junction Iowa 103) and Sections 33, 28, 21, 16 (junction Iowa 16), and 9-T69N-R6W to a point approximately 200 feet north of the SW Corner Section 9-T69N-R6W; thence north through the east part of Sections 8 and 5-T69N-R6W to a point approximately 300 feet south of the NE Corner Section 5-T69N-R6W; thence north following substantially the section line of Section 4-T69N-R6W to the Lee-Henry County line, at a point near the NW Corner of Section 4-T69N-R6W, Lee County (SW Corner of Section 33-T70N-R6W, Henry County).

**PROPOSAL/ACTION RECOMMENDATION:**



It is recommended to approve adding the description of Iowa 27 (Avenue of the Saints) in Lee County to the Primary Road System.