

OFFICIAL DESCRIPTION CHANGE

OFFICE: Transportation Data

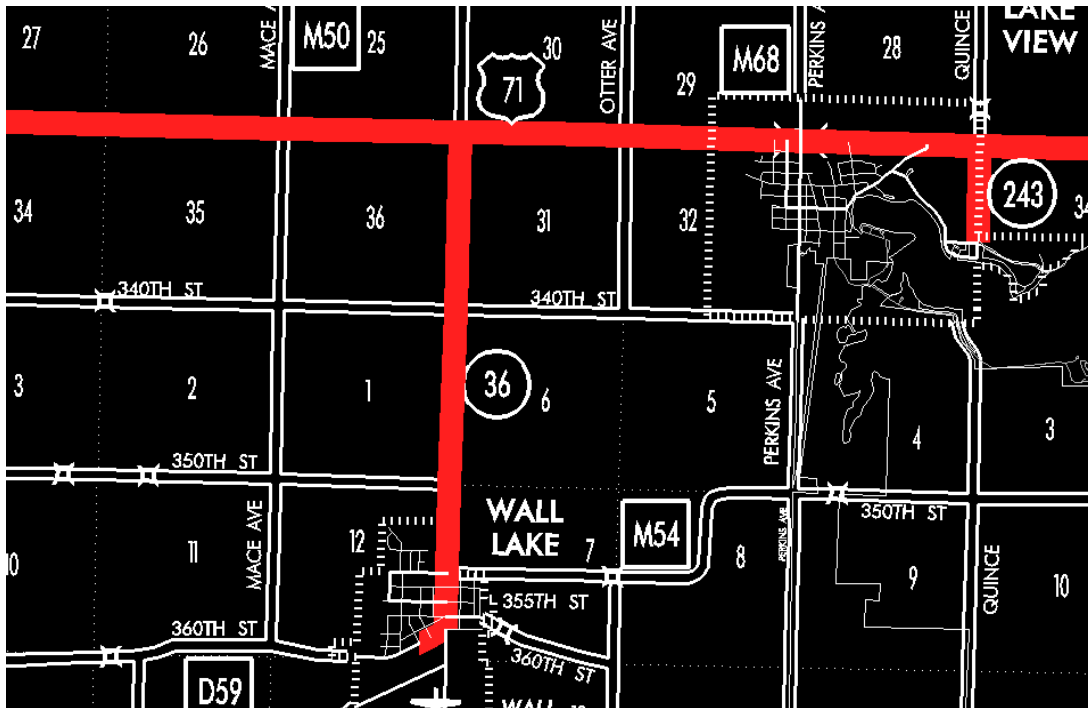
EFFECTIVE DATE: 07-01-2003

ENTERED BY: Stefani Wonders

ENTERED DATE: 08-28-2006

DISCUSSION/BACKGROUND:

Senate File 451 transferred Iowa 36 in its entirety, in Sac County, to city and county jurisdiction on July 1, 2003.



OFFICIAL DESCRIPTION CHANGE

COUNTY: Sac

ROUTE: Iowa 36

STAFF ACTION NUMBER: S-87-1514

APPROVAL DATE: 5-13-87

New Description – Iowa 36 and its extension in Sac County described as follows:

Wall Lake:

Beginning on 1st Street at Boyer Street; thence northeast on 1st Street to Center Street; thence north on Center Street to the north corporation line.

Beginning on the north corporation line of Wall Lake connecting with Center Street; thence northerly following substantially the section line of Sections 7 and 6–T86N–R36W and Section 31–T87N–R36W to a point near the NW Corner Section 31–T87N–R36W (junction US 71 and Iowa 175).

COMMISSION ORDER

DIVISION: Planning & Research

COMMISSION ORDER NUMBER: PR-79-272

SUBMITTED BY: C.I. MacGillivray

MEETING DATE: 11-2-78

DISCUSSION/BACKGROUND:

Due to a review of our Primary Road System records Iowa 36 in Sac County should be deleted and the new description added should be officially included into the Primary System.

Iowa 36 begins in Wall Lake, and travels northeasterly and northerly to a junction with US 71 approximately 3 miles north of Wall Lake, Iowa.

PROPOSAL/ACTION RECOMMENDATION:

Locate Iowa 36 and its extension in Sac County as follows:

Wall Lake:

Beginning at Boyer Street on an unnamed street; thence in a northeasterly and northerly direction to the north corporation line connecting with an unnamed street.

Beginning on the north corporation line of the City of Wall Lake connecting with an unnamed street; thence northerly following substantially the section line of Sections 7 and 6-T86N-R36W and Section 31-T87N-R36W to a point near the NW Corner Section 31-T87N-R36W (junction US 71 and Iowa 175).

NOW, THEREFORE: Be it resolved that the Iowa Department of Transportation approve the location of Iowa 36 in Sac County, Iowa.

NOTE: To become effective upon the adoption of this resolution.

REVISED: 5-13-87

OFFICIAL DESCRIPTION CHANGE

COUNTY: Sac

CITY OF: Wall Lake

ROUTE: Iowa 36

APPROVAL DATE: 4-6-60

Commencing on Center Street at the north corporation line; thence southerly on Center Street to First Street; thence southwest of First Street to the west line of Boyer Street.

OFFICIAL DESCRIPTION CHANGE

COUNTY: Sac

ROUTE: Iowa 36

APPROVAL DATE: 4-14-37

Beginning on the north corporation line of the Town of Wall Lake, connecting with Center Street; thence north following substantially the section line to a point near the NE Corner of Section 36-T87N-R37W.