

**OFFICIAL DESCRIPTION CHANGE**

**OFFICE:** Transportation Data

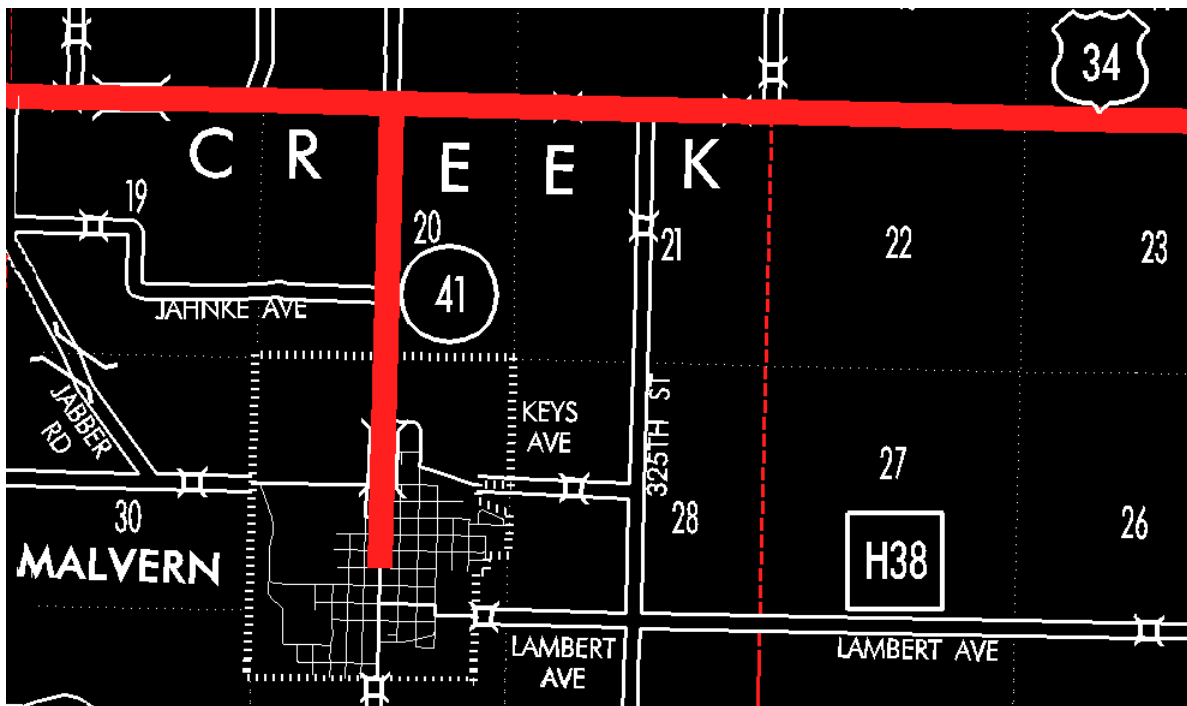
**EFFECTIVE DATE:** 07-01-2003

**ENTERED BY:** Stefani Wonders

**ENTERED DATE:** 08-21-2006

**DISCUSSION/BACKGROUND:**

Senate File 451 transferred Iowa 41 in its entirety, in Mills County, to city and county jurisdiction on July 1, 2003.



**OFFICIAL DESCRIPTION CHANGE**

**COUNTY:** Mills

**ROUTE:** Iowa 41

**STAFF ACTION NUMBER:** S-87-1530

**APPROVAL DATE:** 5-13-87

New Description – Iowa 41 and its extension in Mills County described as follows:

Malvern:

Beginning on Main Street at the center of Sixth Street; thence north on Main Street to the north corporation line.

Beginning on the north corporation line of Malvern connecting with Main Street; thence northerly following substantially the center section line of Section 20-T72N-R41W to a point near the N ¼ Corner of Section 20-T72N-R41W (junction US 34).

**COMMISSION ORDER**

**DIVISION:** Planning & Research

**COMMISSION ORDER NUMBER:** PR-79-272

**SUBMITTED BY:** C.I. MacGillivray

**MEETING DATE:** 11-2-78

**DISCUSSION/BACKGROUND:**

Due to a review of our Primary Road System Records, Iowa 41 in Mills County should be deleted and the new description added should be officially included into the Primary System.

**PROPOSAL/ACTION RECOMMENDATION:**

It is recommended that the old description of Iowa 41 in Mills County be deleted and the new description, as referred in the attached detailed description, be included in the Primary Road System effective upon the adoption of this resolution.

Locate Iowa 41 and its extension in Mills County as follows:

Malvern:

Beginning on an unnamed street at the center of Sixth Street; thence northerly to the north corporation line connecting with an unnamed street.

Beginning on the north corporation line of the City of Malvern connecting with an unnamed street; thence northerly following substantially the center section line of Section 20-T72N-R41W to a point near the N ¼ Corner of Section 20-T72N-R41W (junction US 34).

REVISED: 5-13-87

**OFFICIAL DESCRIPTION CHANGE**

**COUNTY:** Mills

**CITY OF:** Malvern

**ROUTE:** Iowa 41

**APPROVAL DATE:** 10-8-70

Beginning at the centerline of Sixth Street at its intersection with First Avenue; thence northerly on First Avenue to the north corporation line.

REVISED: 1978

**OFFICIAL DESCRIPTION CHANGE**

**COUNTY:** Mills

**ROUTE:** Iowa 41

**APPROVAL DATE:** 4-14-37

Beginning on the north corporation line of the Town of Malvern connecting with First Avenue thence north following substantially the  $\frac{1}{4}$  section line to a point near the N  $\frac{1}{4}$  Corner of Section 20-T72N-R41W.

**REVISED:** 1978