

OFFICIAL DESCRIPTION CHANGE

OFFICE: Transportation Data

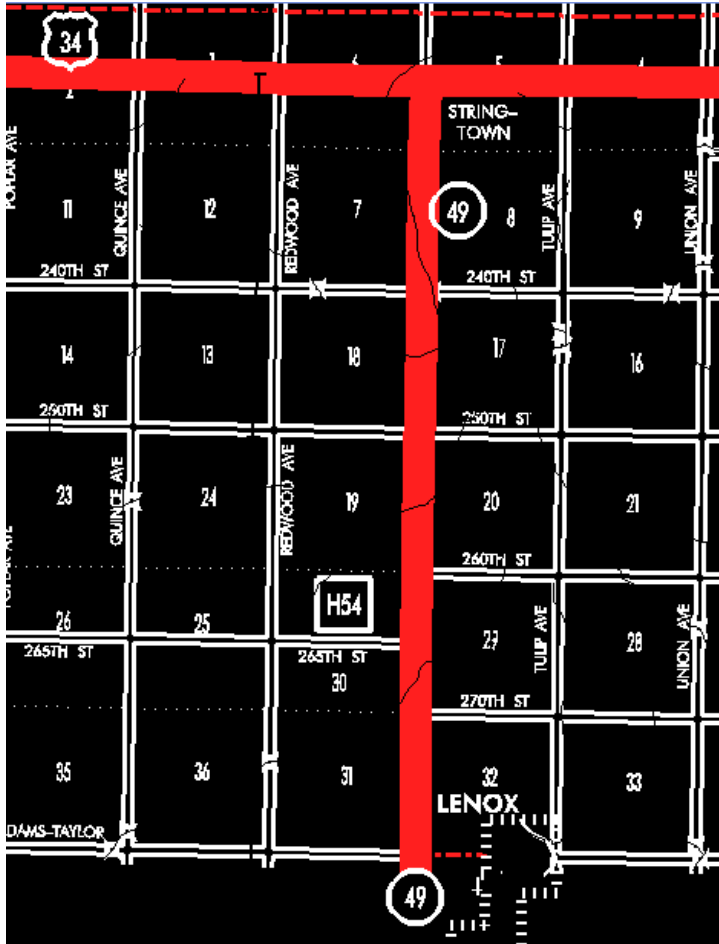
EFFECTIVE DATE: 07-01-2003

ENTERED BY: Stefani Wonders

ENTERED DATE: 08-22-2006

DISCUSSION/BACKGROUND:

Senate File 451 transferred Iowa 49 in its entirety, in Adams County, to county jurisdiction on July 1, 2003.



COMMISSION ORDER

DIVISION: Planning & Research

COMMISSION ORDER NUMBER: PR-79-272

SUBMITTED BY: C.I. MacGillivray

MEETING DATE: 11-2-78

DISCUSSION/BACKGROUND:

Due to the review of our Primary Road System Iowa 49 in Adams County should be deleted from the Primary Road System and the new description added should be officially included into the Primary Road System.

PROPOSAL/ACTION RECOMMENDATION:

Locate Iowa 49 in Adams County as follows:

Beginning on the Adams–Taylor County line at a point near the SW Corner of Section 32–T71N–R32W, Adams County, (NW Corner of Section 5–T70N–R32W, Taylor County); thence north following substantially the section line through Sections 32, 29, 20, 17, 8 and 5–T71N–R32W to a point near W ¼ Corner of Section 5–T71N–R32W connecting with US 34.

NOW, THEREFORE: Be it resolved that the Iowa Department of Transportation approve the location of Iowa 49, Adams County, Iowa.

NOTE: To become effective upon adoption of this resolution.

COMMISSION ORDER

DIVISION: Planning & Research

COMMISSION ORDER NUMBER: PR–76–498

SUBMITTED BY: Raymond L. Kassel

MEETING DATE: 4–20–76

DISCUSSION/BACKGROUND:

Due to the review of our Primary Road System Iowa 49 in Adams County should be deleted from the Primary Road System and the new description added should be officially included into the Primary Road System.

PROPOSAL/ACTION RECOMMENDATION:

Locate Iowa 49 in Adams County as follows:

Beginning on the Adams–Taylor County line at a point near the SW Corner of Section 32–T71N–R32W, Adams County, (NW Corner of Section 5–T70N–R32W, Taylor County); thence north following substantially the section line through Sections 32, 29, 20, 17, 8 and 5–T71N–R32W to a point near W ¼ Corner of Section 5–T71N–R32W connecting with US 34.

NOW, THEREFORE: Be it resolved that the Iowa Department of Transportation approve the location of Iowa 49, Adams County, Iowa.

NOTE: To become effective upon adoption of this resolution.

OFFICIAL DESCRIPTION CHANGE

COUNTY: Adams

ROUTE: Iowa 49

COMMISSION ORDER NUMBER:

APPROVAL DATE: 4–14–37

Beginning on the Adams–Taylor County line at a point near the SW Corner of Section 32–T71N–R32W, Adams County (NW Corner of Section 5–T70N–R32W, Taylor County); thence north following substantially the section line to a point near the E ¼ Corner of Section 6–T71N–32W.

OFFICIAL DESCRIPTION CHANGE

COUNTY: Adams

ROUTE: US 49

APPROVAL DATE: 04–14–37

Beginning at a point approximately 600 feet east of the W. ¼ Cor. of Sec. 5–T71–R32, thence curving in a southwesterly direction to a point approximately 600 feet south of the W. ¼ Cor. Sec. 5–T71–R32.

