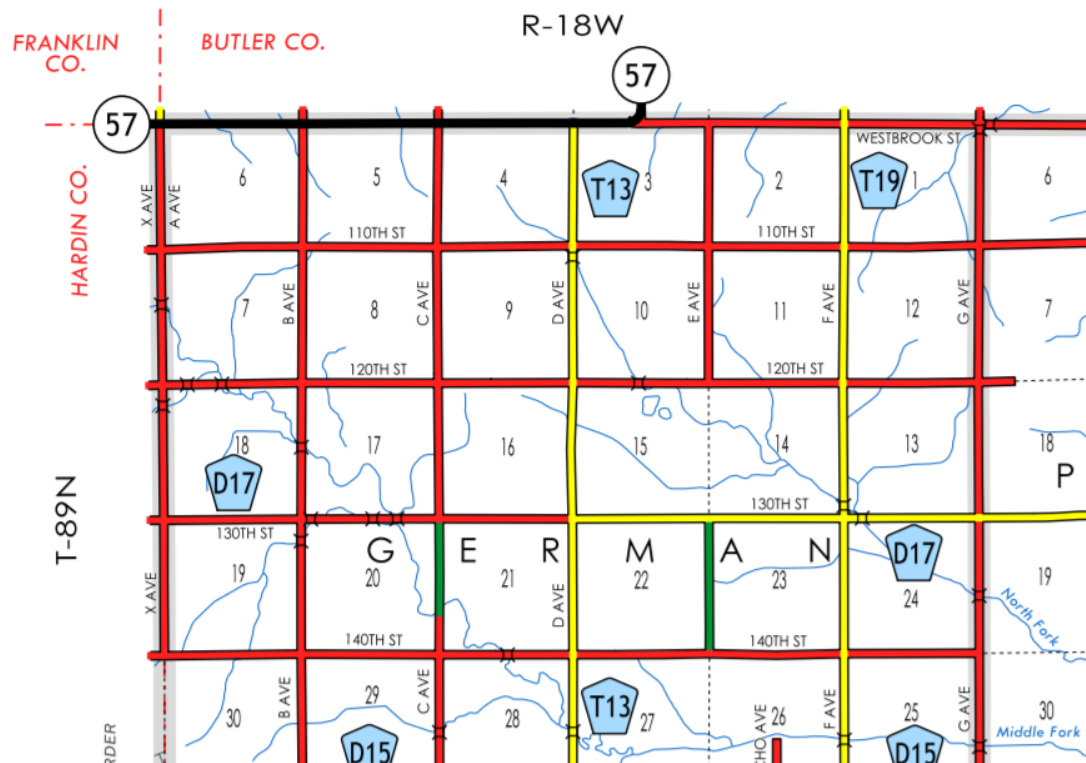
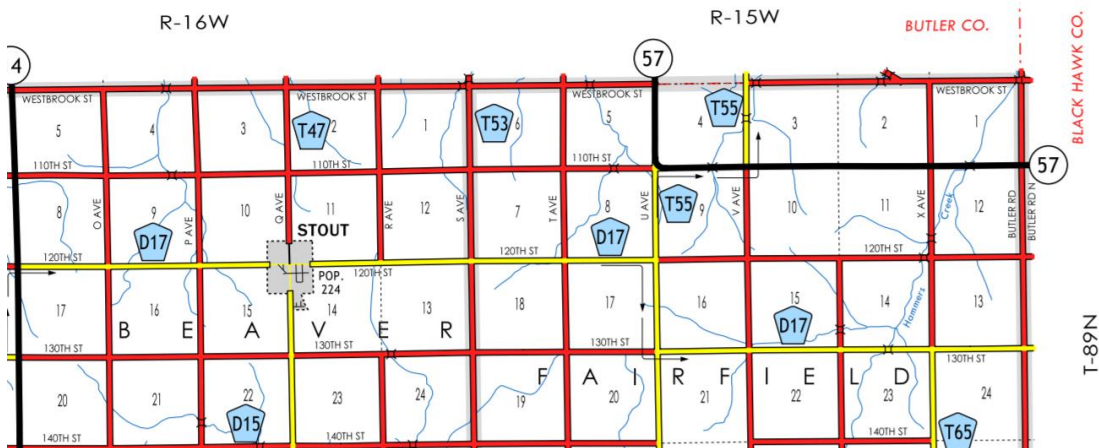


New Description – Signed Iowa 57 and its extensions in Grundy County described as follows:



Beginning on the Grundy-Butler-Hardin County line at a point near the NW Corner Section 6-T89N-R18W, Grundy County (SE Corner Section 31-T90N-R18W, Butler County); thence easterly along the north section line of Sections 6, 5, 4, and 3-T89N-R18W to a point approximately 2210 feet east of the NW Corner Section 3-T89N-R18W.



Beginning again on the Grundy-Butler County line at a point near the NW Corner Section 4-T89N-R15W, Grundy County (SE Corner Section 32-T90N-R15W, Butler County); thence southerly following substantially the section line of Section 4-T89N-R15W to a point approximately 600 feet north of the SW Corner Section 4-T89N-R15W; thence curving in a southeasterly direction through Section 4-T89N-R15W to a point approximately 600 feet east of the NW Corner of Section 9-T89N-R15W; thence east following substantially the section line of Sections 9, 10, 11 and 12-T89N-R15W to the Grundy-Black Hawk County line at a point near the NE Corner of Section 12-T89N-R15W, Grundy County (NW Corner Section 7-T89N-R14W, Black Hawk County).

OFFICIAL DESCRIPTION CHANGE

OFFICE: Transportation Data

EFFECTIVE DATE: 08-22-2003

ENTERED BY: Stefani Wonders

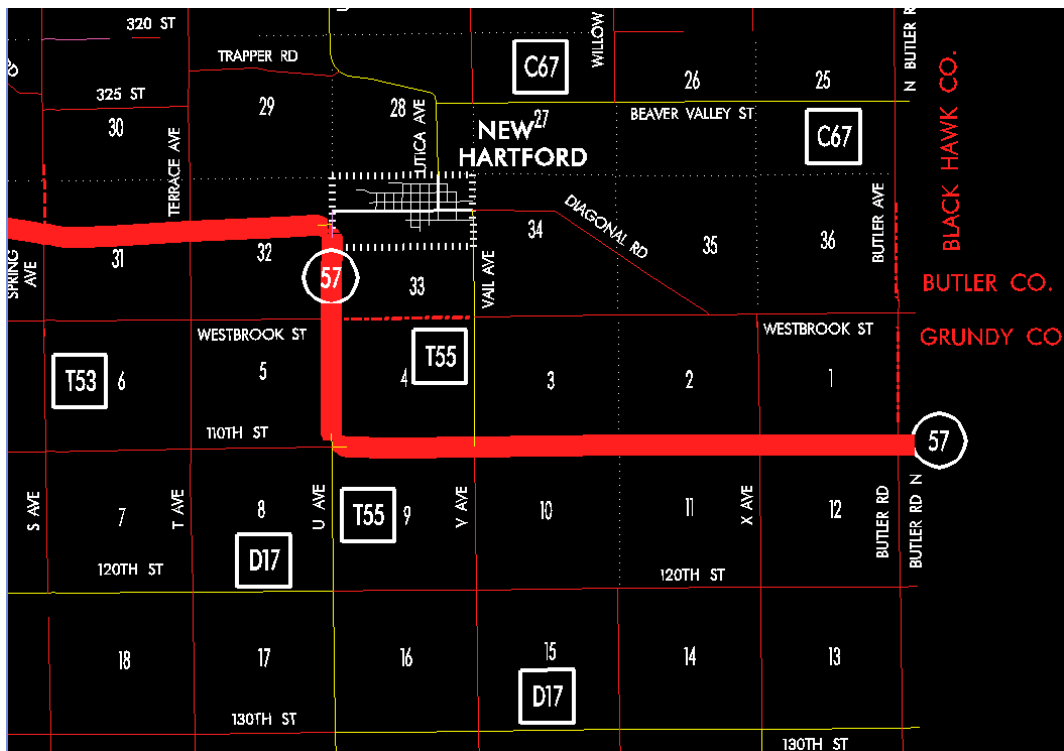
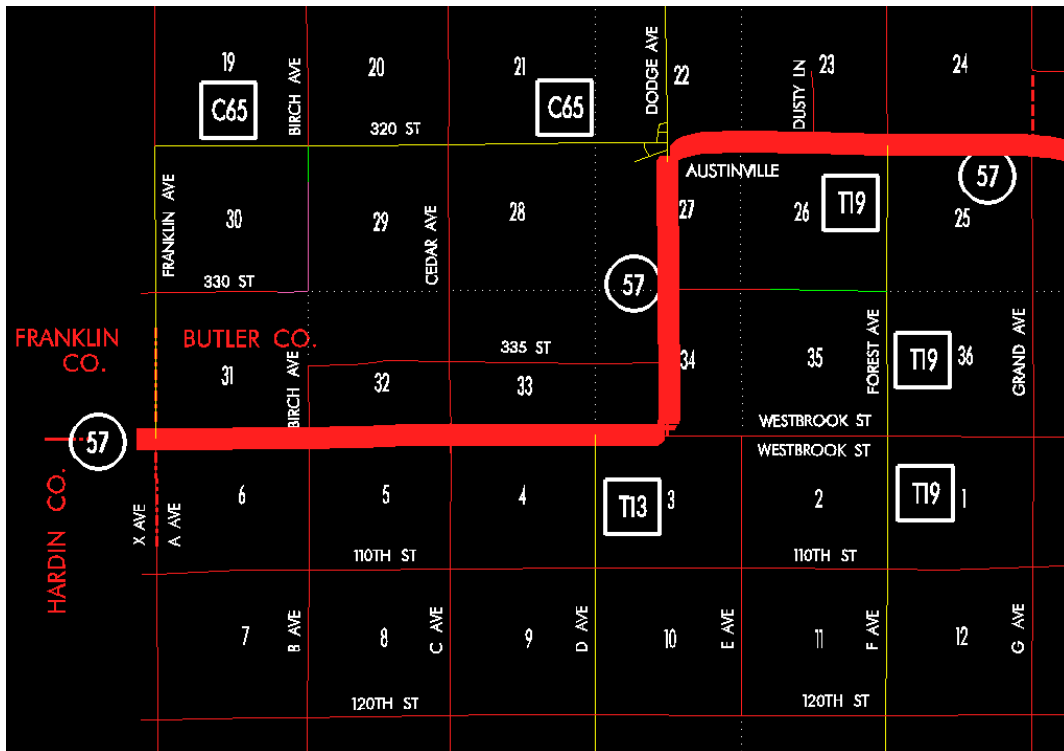
ENTERED DATE: 01-20-2005

DISCUSSION/BACKGROUND:

New Description – Unsigned Iowa 57 and its extensions in Grundy County described as follows:

Beginning on the Grundy–Butler–Hardin County line at a point near the NW Corner Section 6–T89N–R18W, Grundy County (SE Corner Section 31–T90N–R18W, Butler County); thence easterly along the north section line of Sections 6, 5, 4, and 3–T89N–R18W to a point approximately 2210 feet east of the NW Corner Section 3–T89N–R18W.

Beginning again on the Grundy–Butler County line at a point near the NW Corner Section 4–T89N–R15W, Grundy County (SE Corner Section 32–T90N–R15W, Butler County); thence southerly following substantially the section line of Section 4–T89N–R15W to a point approximately 600 feet north of the SW Corner Section 4–T89N–R15W; thence curving in a southeasterly direction through Section 4–T89N–R15W to a point approximately 600 feet east of the NW Corner of Section 9–T89N–R15W; thence east following substantially the section line of Sections 9, 10, 11 and 12–T89N–R15W to the Grundy–Black Hawk County line at a point near the NE Corner of Section 12–T89N–R15W, Grundy County (NW Corner Section 7–T89N–R14W, Black Hawk County).



STAFF ACTION

OFFICE: Transportation Inventory

STAFF ACTION NUMBER: S-87-1132

SUBMITTED BY: Patrick R. Cain

SUBMITTAL DATE: 2-11-87

DISCUSSION/BACKGROUND:

US 20 was relocated and open to traffic on June 14, 1986 using a portion of Unsigned Iowa 57 alignment. That portion of Unsigned Iowa 57 from a junction of Iowa 14 at a point near the NW Corner Section 6-T88N-R16W east to the Grundy-Black Hawk County line at a point approximately 370 feet west of the N ¼ Corner Section 1-T88N-R15W should be re-designated as US 20.

The old alignment of US 20 from the Grundy-Butler County line at a point near the NW Corner Section 4-T89N-R15W south and east to the Grundy-Black Hawk County line at a point near the NE Corner Section 12-T89N-R15W should be re-designated as Unsigned Iowa 57. The official description of Unsigned Iowa 57 should be revised to reflect these changes.

Unsigned Iowa 57 begins on the Grundy-Butler County line approximately four (4) miles west of the NE Corner of Grundy County and travels south and east to the Grundy-Black Hawk County line approximately one (1) mile south of the NE Corner of Grundy County.

PROPOSAL/ACTION RECOMMENDATION:

It is recommended to approve revising the description of Unsigned Iowa 57 in Grundy County and including the new description in the primary road system.

New description: Unsigned Iowa 57 in Grundy County described as follows:

Beginning on the Grundy–Butler County line at a point near the NW Corner Section 4–T89N–R15W, Grundy County (SE Corner Section 32–T90N–R15W, Butler County); thence southerly following substantially the section line of Section 4–T89N–R15W to a point approximately 600 feet north of the SW Corner Section 4–T89N–R15W; thence curving in a southeasterly direction through Section 4–T89N–R15W to a point approximately 600 feet east of the NW Corner of Section 9–T89N–R15W; thence east following substantially the section line of Sections 9, 10, 11 and 12–T89N–R15W to the Grundy–Black Hawk County line at a point near the NE Corner of Section 12–T89N–R15W, Grundy County (NW Corner Section 7–T89N–R14W, Black Hawk County).

OFFICIAL DESCRIPTION CHANGE

COUNTY: Grundy

ROUTE: Unsigned Iowa 57

STAFF ACTION NUMBER: S-87-721

APPROVAL DATE: 12-18-86

New Description – Unsigned Iowa 57 in Grundy County described as follows:

Beginning at a point approximately 950 feet west of the NE Corner Section 1–T88N–R17W (junction Iowa 14); thence east following substantially the section line of Section 1–T88N–R17W and Sections 6, 5, 4, 3, 2, and 1–T88N–R16W and Sections 6, 5, 4, 3, and 2–T88N–R15W to the Grundy–Black Hawk County line at a point near the NE Corner Section 2–T88N–R15W, Grundy County (SW Corner Section 31–T89N–R14W, Black Hawk County); thence east along the Grundy–Black Hawk County line to a point approximately 370 feet west of the N ¼ Corner Section

1-T88N-R15W, Grundy County (S ¼ Corner Section 31-T89N-R14W, Black Hawk County).

REVISED: 3-9-87

COMMISSION ORDER

DIVISION: Planning & Research

COMMISSION ORDER NUMBER: PR-79-272

SUBMITTED BY: C.I. MacGillivray

MEETING DATE: 11-2-78

DISCUSSION/BACKGROUND:

Due to a review of our Primary Road System records, Unsigned Iowa 57 in Grundy County, Iowa should be deleted and the new description added should be officially included into the Primary System.

Unsigned Iowa 57 begins at the junction of Iowa 14 approximately 7 miles north of Grundy Center, and travels easterly to the Grundy-Black Hawk County line approximately 4 miles east of Dike, Iowa.

PROPOSAL/ACTION RECOMMENDATION:

Locate Unsigned Iowa 57 in Grundy County as follows:

Beginning at a point approximately 1200 feet south of the NW Corner Section 6-T88N-R16W; thence curving northeasterly to a point approximately 1200 feet east of the NW Corner Section 6-T88N-R16W; thence east following substantially the section line of Sections 6, 5, 4, 3, 2, and 1-T88N-R16W, and Sections 6, 5, 4, 3, and 2-T88N-R15W to the Grundy-Black Hawk County line at a point near the NE Corner Section 2-T88N-R15W, Grundy County (SW Corner Section 31-T89N-R14W, Black

Hawk County); thence east along the Grundy-Black Hawk County line to a point approximately 370 feet west of the N $\frac{1}{4}$ Corner Section 1-T88N-R15W, Grundy County (S $\frac{1}{4}$ Corner Section 31-T89N-R14W, Black Hawk County).

NOW, THEREFORE: Be it resolved that the Iowa Department of Transportation approve the location of Unsigned Iowa 57 in Grundy County, Iowa.

NOTE: To be effective upon the adoption of this resolution.

REVISED: 12-18-86

OFFICIAL DESCRIPTION CHANGE

COUNTY: Grundy

ROUTE: Unsigned Iowa 57

APPROVAL DATE: 12-31-68

Beginning at a point approximately 1200 feet south of the NW Corner Section 6-T88N-R16W; thence curving in a northeasterly direction to a point approximately 1200 feet east of the NW Corner Section 6-T88N-R16W; thence east following substantially the section line to the Grundy-Black Hawk County line at a point near the SE Corner Section 36-T89N-R15W, Grundy County (SW Corner Sec 31-T89N-R14W, Black Hawk County); thence east along the Grundy-Black Hawk County line to a point near the N $\frac{1}{4}$ Corner Section 1-T88N-R15W, Grundy County (S $\frac{1}{4}$ Corner Sec 31-T89N-R14W, Black Hawk County).

OFFICIAL DESCRIPTION CHANGE

COUNTY: Grundy

APPROVAL DATE: 12-31-68

CONNECTING CURVES

Junction of Iowa 14 and Unsigned Iowa 57 north of Grundy Center:

Beginning at a point approximately 1200 feet east of the NW Corner Section 6-T88N-R16W; thence west to a point approximately 100 feet west of the NW Corner Section 6-T88N-R16W.