

OFFICIAL DESCRIPTION CHANGE

OFFICE: Transportation Data

EFFECTIVE DATE: 12-2006

ENTERED BY: Darlene Bovee

ENTERED DATE: 02-26-2007

New description – Iowa 60 and its extensions in Sioux County described as follows:

Beginning on the Sioux–Plymouth County line at a point approximately 770 feet west of the SE Corner Section 31–T94N–R44W, Sioux County (NE Corner Section 6–T93N–R44W, Plymouth County); thence in a northeasterly direction through Sections 31, 32, 29, 28, 21, 22, and 15–T94N–R44W to approximately 460 feet east of the Center of said Section 15; thence northerly and northeasterly through Sections 15, 10, and 11–T94N–R44W to the south corporation line of Alton (approximately 2650 feet north and 1990 feet east of the SW Corner of said Section 11) connecting with an unnamed street.

Alton:

Beginning at the south corporation line connecting with an unnamed street; thence northeasterly to the east corporation line (NW Corner Section 12–T94N–R44W).

Beginning again on the east corporation line of Alton connecting with an unnamed street; thence northeasterly, northerly, and northeasterly through Section 1–T94N–R44W, Section 36–T95N–R44W, and Sections 31, 30, 29, 20 and 21 to a point approximately to a point approximately 550 feet south of the NE Corner Section 21–T95N–R43W; thence northerly following substantially the section line of Sections 22 and 15–T95N–R43W to approximately 1780 feet south of the NW Corner of said Section 15; thence northeasterly and northerly through Sections 15, 10, 11, and 2–T95N–R43W to the east corporation line of Hospers connecting with an unnamed street (approximately 1557 feet north and 628 feet east of the SW Corner of said Section 2).

Hospers:

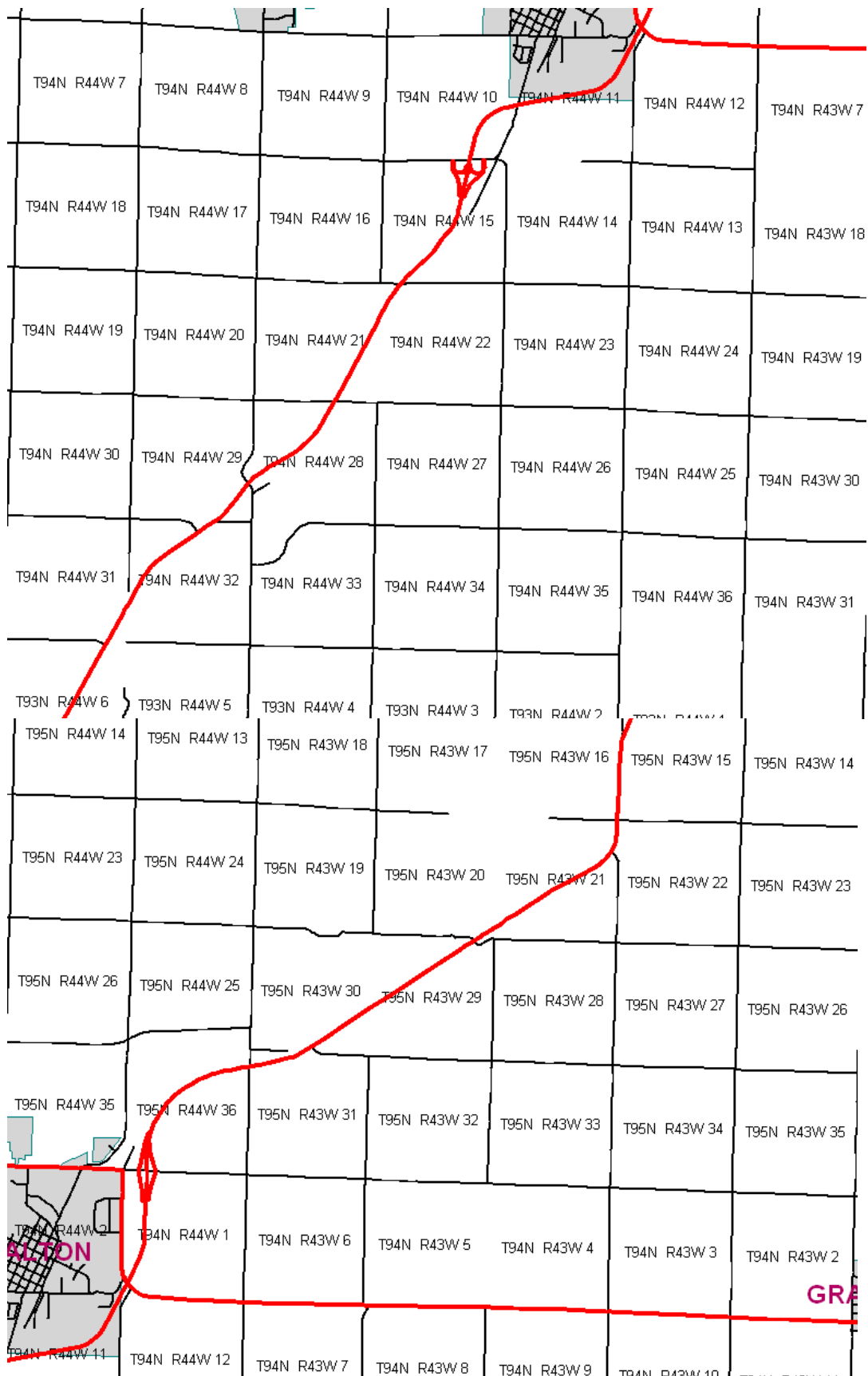
Beginning at the east corporation line connecting with an unnamed street; thence northwesterly to the north corporation line (approximately 2637 feet north and 311 feet east of the SW Corner of Section 2-T95N-R43W).

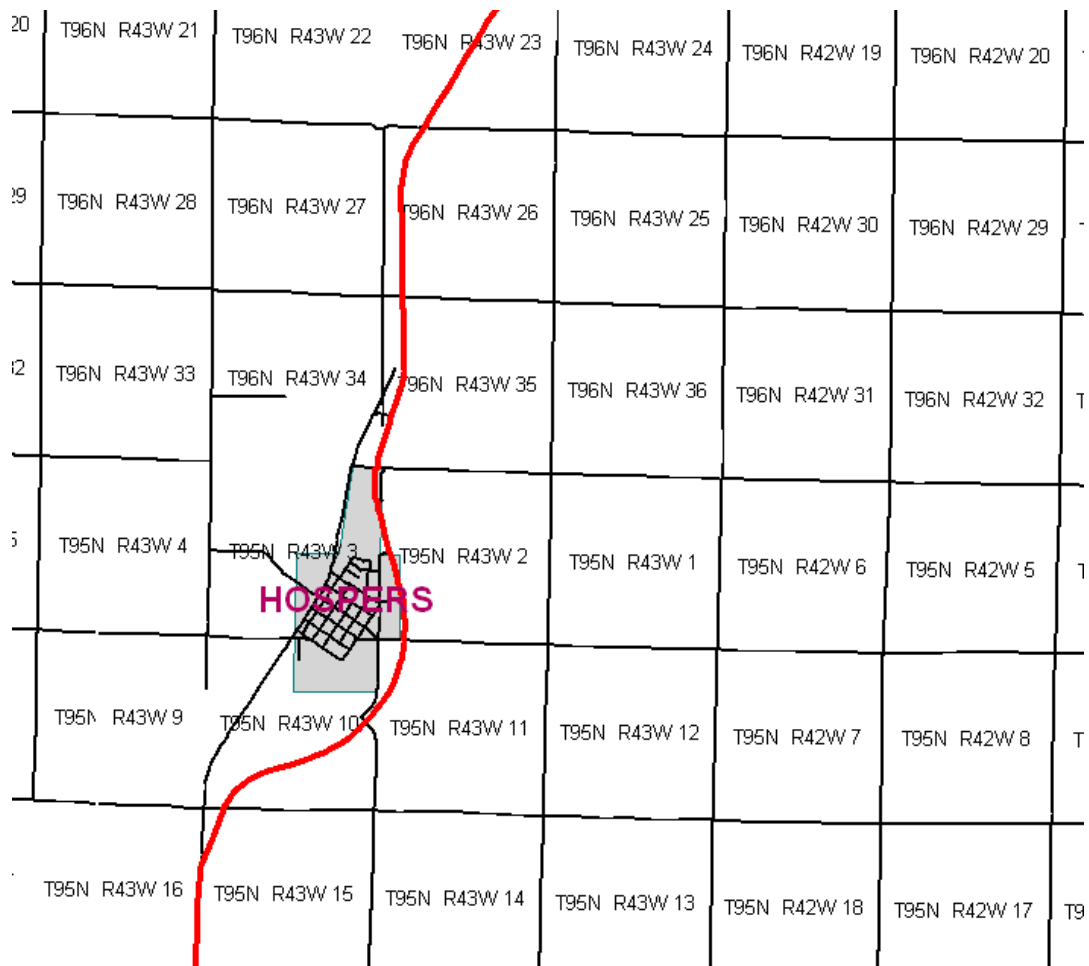
Beginning again on the north corporation line of Hospers connecting with an unnamed street; thence in a northwesterly direction to the east corporation line of Hospers connecting with an unnamed street (approximately 3695 feet north of the SW Corner of Section 2-T95N-R43W).

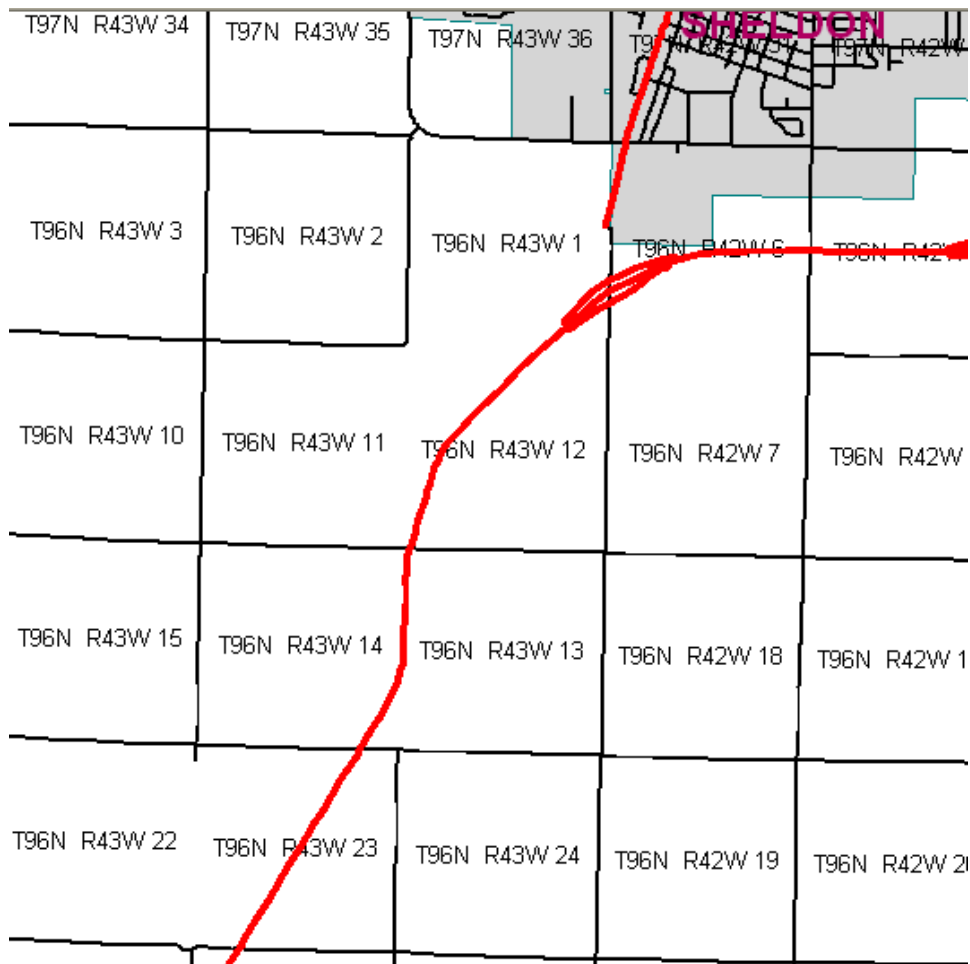
Hospers:

Beginning at the east corporation line connecting with an unnamed street; thence northwesterly and northerly to the north corporation line (approximately 166 feet west of the NW Corner of Section 2-T95N-R43W).

Beginning again on the north corporation line of Hospers connecting with an unnamed street; thence northeasterly, northerly, and northeasterly through Sections 34, 35, 26, 23, 14, 13, 12, and 1-T96N-R43W to the Sioux-O'Brien County line (approximately 1592 feet north of the SE Corner of said Section 1) (SW Corner Section 6-T96N-R42W, O'Brien County).







OFFICIAL DESCRIPTION CHANGE

OFFICE: Transportation Data

EFFECTIVE DATE: 12-2005

ENTERED BY: Stefani Wonders

ENTERED DATE: 08-30-2006

New description – Iowa 60 and its extension in Sioux County described as follows:

Beginning on the Sioux–Plymouth County line at a point approximately 700 feet west of the SE Corner Section 31–T94N–R44W, Sioux County (NE Corner Section 6–T93N–R44W, Plymouth County); thence in a northeasterly direction along the west side of the Chicago and Northwestern Railway and substantially parallel thereto through Sections

31, 32, 29, 28, 21, 22, and 15-T94N-R44W to approximately 695 feet east of the Center of said Section 15; thence northerly and northeasterly through Sections 15, 10, and 11-T94N-R44W to the south corporation line of Alton (approximately 2710 feet north and 2780 feet east of the SW Corner of said Section 11) connecting with an unnamed street.

Alton:

Beginning at the south corporation line connecting with an unnamed street; thence northeasterly to the east corporation line (NW Corner Section 12-T94N-R44W).

Beginning again on the east corporation line of Alton connecting with an unnamed street; thence northeasterly, northerly, and northeasterly through Sections 1-T94N-R44W and 36-T95N-R44W to a point on the east side of the Chicago and Northwestern Railway approximately 2671 feet east of the W $\frac{1}{4}$ Corner of said Section 36; thence in a northeasterly direction along the east side of said railway and substantially parallel thereto through Section 36-T95N-R44W and Sections 31, 30, 29 and 20-T95N-R43W to a point approximately 514 feet north of the SE Corner Section 20-T95N-R43W; thence in a northeasterly direction through Section 21-T95N-R43W to a point approximately 900 feet south of the NE Corner Section 21-T95N-R43W; thence northerly following substantially the section line of Sections 22 and 15-T95N-R43W to approximately 1753 feet south of the NW Corner of said Section 15; thence northeasterly and northerly through Sections 15, 10, 11, and 2-T95N-R43W to the east corporation line of Hospers connecting with an unnamed street (approximately 1672 feet north and 853 feet east of the SW Corner of said Section 2).

Hospers:

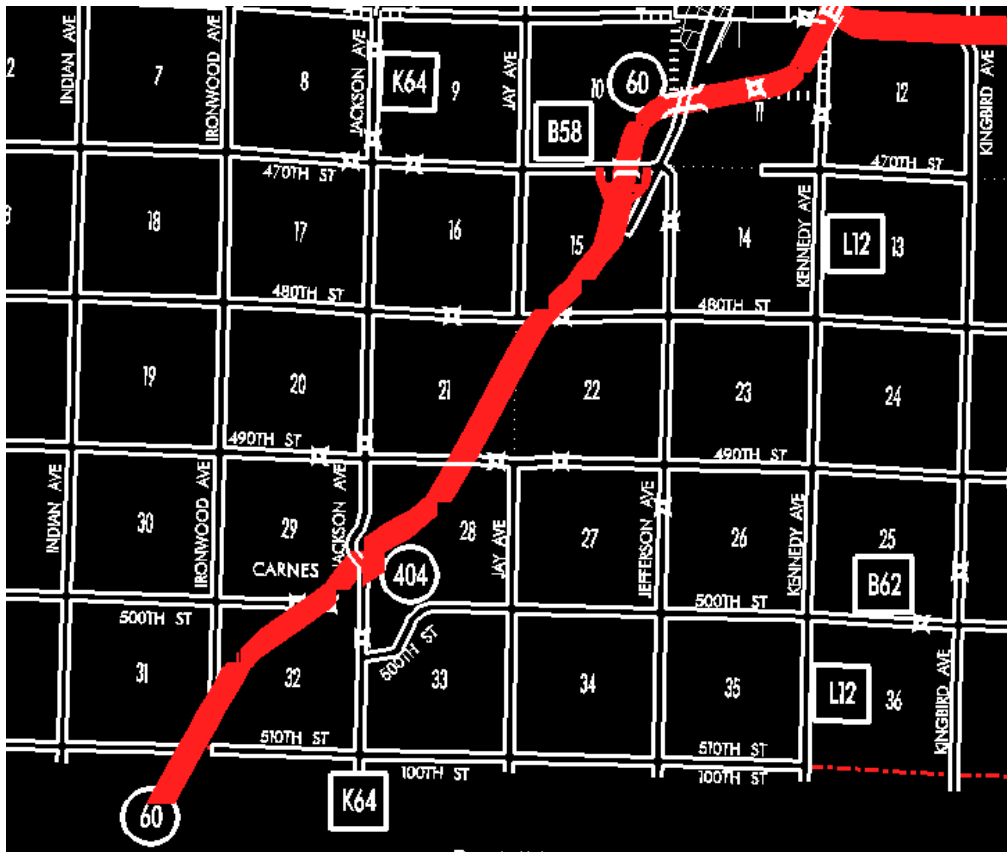
Beginning at the east corporation line connecting with an unnamed street; thence northwesterly to the north corporation line (approximately 2637 feet north and 482 feet east of the SW Corner of Section 2-T95N-R43W).

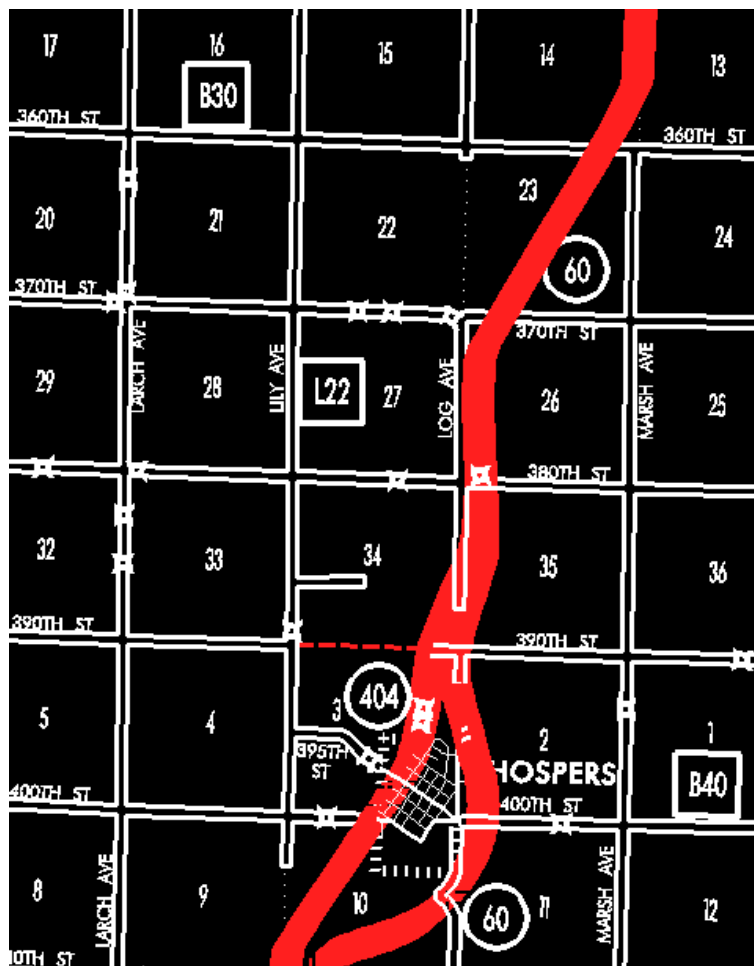
Beginning again on the north corporation line of Hospers connecting with an unnamed street; thence in a northwesterly direction to the east corporation line of Hospers connecting with an unnamed street (approximately 3865 feet north and 56 feet west of the SW Corner of Section 2-T95N-R43W).

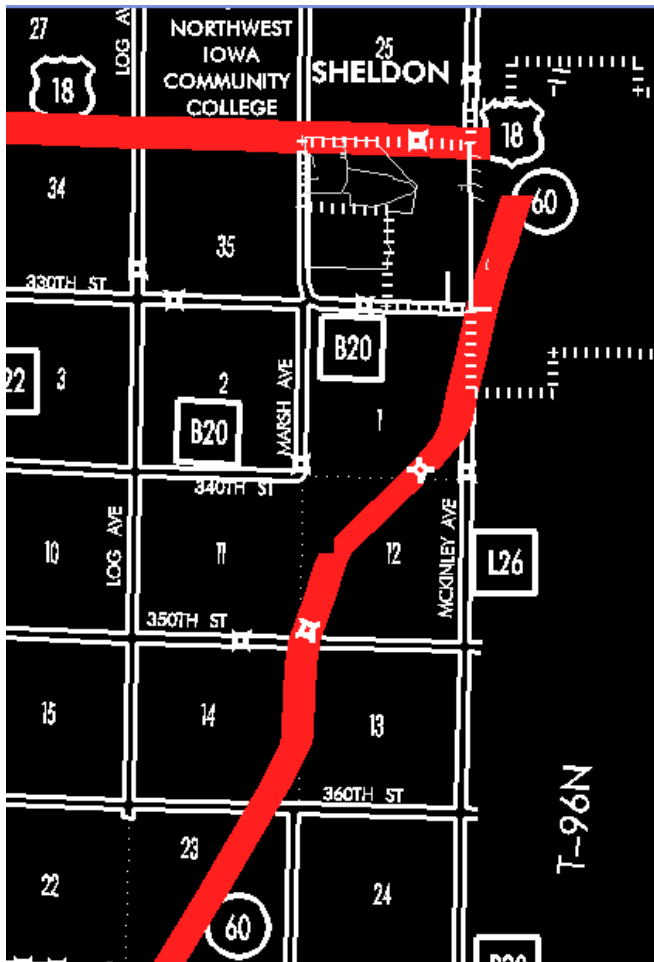
Hospers:

Beginning at the east corporation line connecting with an unnamed street; thence northwesterly and northerly to the north corporation line (approximately 225 feet west and 29 feet south of the NW Corner of Section 2-T95N-R43W).

Beginning again on the north corporation line of Hospers connecting with an unnamed street; thence northeasterly, northerly, and northeasterly through Sections 34, 35, 26, 23 and 14-T96N-R43W to a point approximately 1320 feet north and 1320 feet west of the SE Corner Section 14-T96N-R43W; thence in a northeasterly direction through said Section 14 to a point near the E $\frac{1}{4}$ Corner Section 14-T96N-R43W; thence northerly following substantially the section line of Section 13-T96N-R43W to a point on the east side of the Chicago and Northwestern Railway near the NE Corner Section 14-T96N-R43W; thence in a northeasterly direction along the east side of said railway and substantially parallel thereto through Sections 12 and 1-T96N-R43W to the Sioux-O'Brien County line (approximately 3753 feet north of the SE Corner of said Section 1) (west corporation line of Sheldon connecting with Woodcock Avenue).







OFFICIAL DESCRIPTION CHANGE

OFFICE: Transportation Data

EFFECTIVE DATE: 9-16-2004

ENTERED BY: Stefani Wonders

ENTERED DATE: 08-30-2006

New description – Iowa 60 and its extension in Sioux County described as follows:

Beginning on the Sioux-Plymouth County line at a point approximately 700 feet west of the SE Corner Section 31-T94N-R44W, Sioux County (NE Corner Section 6-T93N-R44W, Plymouth County); thence in a northeasterly direction along the west side of the Chicago and Northwestern Railway and substantially parallel thereto through Sections

31, 32, 29, 28, 21, 22, and 15-T94N-R44W to approximately 695 feet east of the Center of said Section 15; thence northerly and northeasterly through Sections 15, 10, and 11-T94N-R44W to the south corporation line of Alton (approximately 2710 feet north and 2780 feet east of the SW Corner of said Section 11) connecting with an unnamed street.

Alton:

Beginning at the south corporation line connecting with an unnamed street; thence northeasterly to the east corporation line (NW Corner Section 12-T94N-R44W).

Beginning again on the east corporation line of Alton connecting with an unnamed street; thence northeasterly, northerly, and northeasterly through Sections 1-T94N-R44W and 36-T95N-R44W to a point on the east side of the Chicago and Northwestern Railway approximately 2671 feet east of the W $\frac{1}{4}$ Corner of said Section 36; thence in a northeasterly direction along the east side of said railway and substantially parallel thereto through Section 36-T95N-R44W and Sections 31, 30, 29 and 20-T95N-R43W to a point approximately 514 feet north of the SE Corner Section 20-T95N-R43W; thence in a northeasterly direction through Section 21-T95N-R43W to a point approximately 900 feet south of the NE Corner Section 21-T95N-R43W; thence northerly following substantially the section line of Sections 22, 15 and 10-T95N-R43W to a point approximately 400 feet north of the SW Corner Section 10-T95N-R43W; thence in a northeasterly direction through Sections 10 and 3-T95N-R43W to the west corporation line of Hospers, connecting with an unnamed street (approximately S $\frac{1}{4}$ Corner of said Section 3).

Hospers:

Beginning at the west corporation line connecting with an unnamed street; thence northeasterly to the north corporation line (approximately 1716 feet west and 2822 feet south of the SE Corner of Section 3-T95N-R43W).

Beginning again on the north corporation line of Hospers connecting with an unnamed street on the east side of the Chicago and Northwestern

Railway; thence in a northeasterly, northerly, and northeasterly direction along the east side of said railway and substantially parallel thereto through Section 3-T95N-R43W and Sections 34, 35, 26, 23 and 14-T96N-R43W to a point approximately 1320 feet north and 1320 feet west of the SE Corner Section 14-T96N-R43W; thence in a northeasterly direction through said Section 14 to a point near the E $\frac{1}{4}$ Corner Section 14-T96N-R43W; thence northerly following substantially the section line of Section 13-T96N-R43W to a point on the east side of the Chicago and Northwestern Railway near the NE Corner Section 14-T96N-R43W; thence in a northeasterly direction along the east side of said railway and substantially parallel thereto through Sections 12 and 1-T96N-R43W to the Sioux-O'Brien County line (west corporation line of Sheldon) connecting with Woodcock Avenue.

OFFICIAL DESCRIPTION CHANGE

COUNTY: Sioux

ROUTE: Iowa 60

STAFF ACTION NUMBER: S-87-1511

APPROVAL DATE: 5-13-87

New Description – Iowa 60 and its extensions in Sioux County described as follows:

Beginning on the Sioux-Plymouth County line at a point approximately 700 feet west of the SE Corner Section 31-T94N-R44W, Sioux County (NE Corner Section 6-T93N-R44W, Plymouth County); thence in a northeasterly direction along the west side of the Chicago and Northwestern Railway and substantially parallel thereto through Sections 31, 32, 29, 28, 21, 22, 15, 10 and 11-T94N-R44W to the south corporation line of Alton, connecting with 3rd Avenue.

Alton:

Beginning on 3rd Avenue at the south corporation line; thence northeast on 3rd Avenue to the north corporation line.

Beginning again on the north corporation line of Alton connecting with 3rd Avenue (W. junction Iowa 10); thence easterly following substantially the section line of Section 2-T94N-R44W to a point near the NE Corner said Section 2 (E. junction Iowa 10); thence in a northeasterly direction through Sections 35 and 36-T95N-R44W to a point on the east side of the Chicago and Northwestern Railway approximately $\frac{1}{4}$ mile east of the W $\frac{1}{4}$ Corner Section 36-T95N-R44W; thence in a northeasterly direction along the east side of said railway and substantially parallel thereto through Section 36-T95N-R44W and Sections 31, 30, 29 and 20-T95N-R43W to a point approximately $\frac{1}{4}$ mile north of the SE Corner Section 20-T95N-R43W; thence in a northeasterly direction through Section 21-T95N-R43W to a point approximately 900 feet south of the NE Corner Section 21-T95N-R43W; thence northerly following substantially the section line of Sections 22, 15 and 10-T95N-R43W to a point approximately 400 feet north of the SW Corner Section 10-T95N-R43W; thence in a northeasterly direction through Sections 10 and 3-T95N-R43W to the west corporation line of Hospers, connecting with 1st Avenue.

Hospers:

Beginning on 1st Avenue at the west corporation line; thence northeast on 1st Avenue to the north corporation line.

Beginning again on the north corporation line of Hospers connecting with 1st Avenue on the east side of the Chicago and Northwestern Railway; thence in a northeasterly, northerly, and northeasterly direction along the east side of said railway and substantially parallel thereto through Section 3-T95N-R43W and Sections 34, 35, 26, 23 and 14-T96N-R43W to a point approximately $\frac{1}{4}$ mile north and $\frac{1}{4}$ mile west of the SE Corner Section 14-T96N-R43W; thence in a northeasterly direction through said Section 14 to a point near the E $\frac{1}{4}$ Corner Section 14-T96N-R43W; thence northerly following substantially the section line of Section 13-T96N-R43W to a point on the east side of the Chicago and Northwestern Railway near the NE Corner Section 14-T96N-R43W; thence in a northeasterly direction along the east side of said railway and substantially parallel thereto through Sections 12 and 1-T96N-R43W to

the Sioux–O'Brien County line (W. corporation line of Sheldon) connecting with Woodcock Avenue.

COMMISSION ORDER

DIVISION: Planning & Research

COMMISSION ORDER NUMBER: PR–79–272

SUBMITTED BY: C.I. MacGillivray

MEETING DATE: 11–2–78

DISCUSSION/BACKGROUND:

Iowa 60 begins on the Sioux–Plymouth County line approximately 6 miles south and one mile west of Orange City, and travels generally northeasterly via Alton and Hospers to the Sioux–O'Brien County line near the southwest corner of Sheldon, Iowa.

Due to a review of our Primary Road System Records Iowa 60 in Sioux County should be deleted and the new description added should be officially included into the Primary System.

PROPOSAL/ACTION RECOMMENDATION:

It is recommended that the old description of Iowa 60 in Sioux County be deleted and the new description, as referred in the attached detailed description, be included in the Primary Road System effective upon the adoption of this resolution.

Locate Iowa 60 and its extensions in Sioux County as follows:

Beginning on the Sioux-Plymouth County line at a point approximately 700 feet west of the SE Corner Section 31-T94N-R44W, Sioux County (NE Corner Section 6-T93N-R44W, Plymouth County); thence in a northeasterly direction along the west side of the Chicago and Northwestern Railway and substantially parallel thereto through Sections 31, 32, 29, 28, 21, 22, 15, 10, and 11-T94N-R44W to the south corporation line of the City of Alton, connecting with an unnamed street.

Alton:

Beginning on the south corporation line connecting with an unnamed street; thence northeasterly to the north corporation line connecting with an unnamed street.

Beginning again on the north corporation line of the City of Alton connecting with an unnamed street (west junction Iowa 10); thence easterly following substantially the section line of Section 2-T94N-R44W to a point near the NE Corner said Section 2 (east junction Iowa 10); thence in a northeasterly direction through Sections 35 and 36-T95N-R44W to a point on the east side of the Chicago and Northwestern Railway approximately $\frac{1}{4}$ mile east of the W $\frac{1}{4}$ Corner Section 36-T95N-R44W; thence in a northeasterly direction along the east side of said railway and substantially parallel thereto through Section 36-T95N-R44W and Sections 31, 30, 29, and 20-T95N-R43W to a point approximately $\frac{1}{4}$ mile north of the SE Corner Section 20-T95N-R43W; thence in a northeasterly direction through Section 21-T95N-R43W to a point approximately 900 feet south of the NE Corner Section 21-T95N-R43W; thence northerly following substantially the section line of Sections 22, 15, and 10-T95N-R43W to a point approximately 400 feet north of the SW Corner Section 10-T95N-R43W; thence in a northeasterly direction through Sections 10 and 3-T95N-R43W to the west corporation line of the City of Hospers, connecting with an unnamed street.

Hospers:

Beginning on the west corporation line connecting with an unnamed street; thence in a northeasterly direction to the north corporation line connecting with an unnamed street.

Beginning again on the north corporation line of the City of Hospers connecting with an unnamed street on the east side of the Chicago and Northwestern Railway; thence in a northeasterly, northerly, and northeasterly direction along the east side of said railway and substantially parallel thereto through Section 3-T95N-R43W and Sections 34, 35, 26, 23, and 14-T96N-R43W to a point approximately $\frac{1}{4}$ mile north and $\frac{1}{4}$ mile west of the SE Corner Section 14-T96N-R43W; thence in a northeasterly direction through said Section 14 to a point near the E $\frac{1}{4}$ Corner Section 14-T96N-R43W; thence northerly following substantially the section line of Section 13-T96N-R43W to a point on the east side of the Chicago and Northwestern Railway near the NE Corner Section 14-T96N-R43W; thence in a northeasterly direction along the east side of said railway and substantially parallel thereto through Sections 12 and 1-T96N-R43W to the Sioux-O'Brien County line (west corporation line of the City of Sheldon) connecting with an unnamed street.

REVISED: 5-13-87