

**OFFICIAL DESCRIPTION CHANGE**

**OFFICE:** Transportation Data

**EFFECTIVE DATE:** 11-6-08

**ENTERED BY:** Darlene Bovee

**ENTERED DATE:** 12-05-08

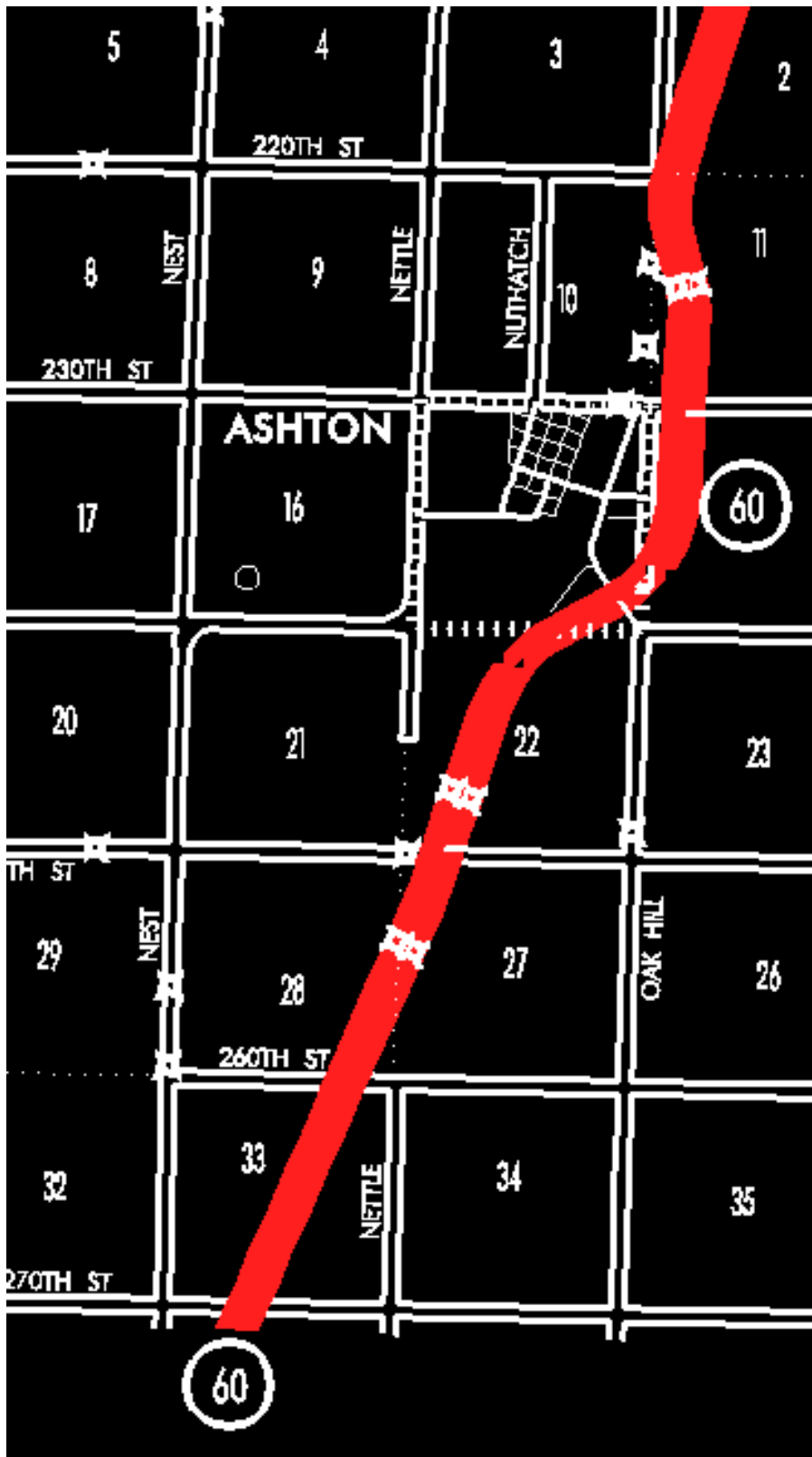
New Description – Iowa 60 and its extensions in Osceola County described as follows:

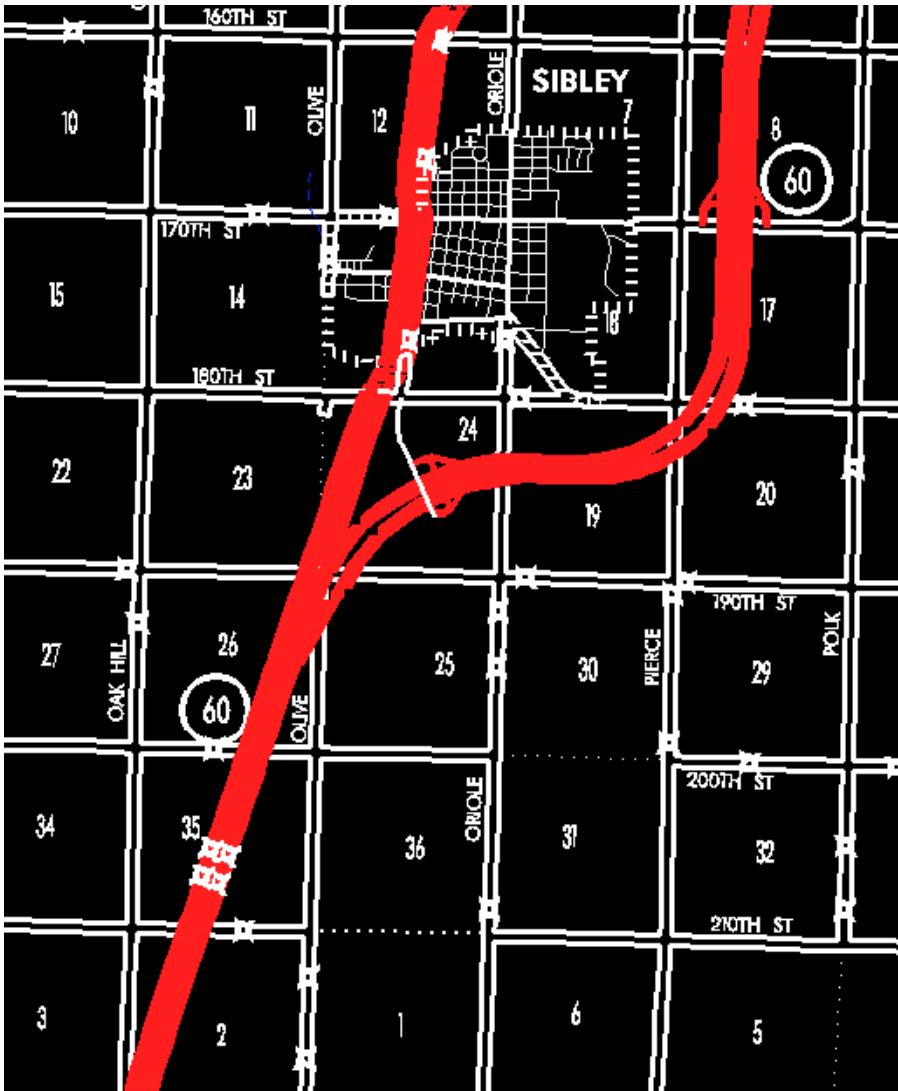
Beginning on the Osceola–O'Brien County line at a point near the S  $\frac{1}{4}$  Corner of Section 33–T98N–R42W, Osceola County (N  $\frac{1}{4}$  Corner of Section 4–T97N–R42W, O'Brien County); thence northeasterly through Sections 33, 28, 27 and 22–T98N–R42W to the south corporation line of Ashton, connecting with an unnamed street (approximately 1580 feet west of the SE Corner of Section 15–T98N–R42W).

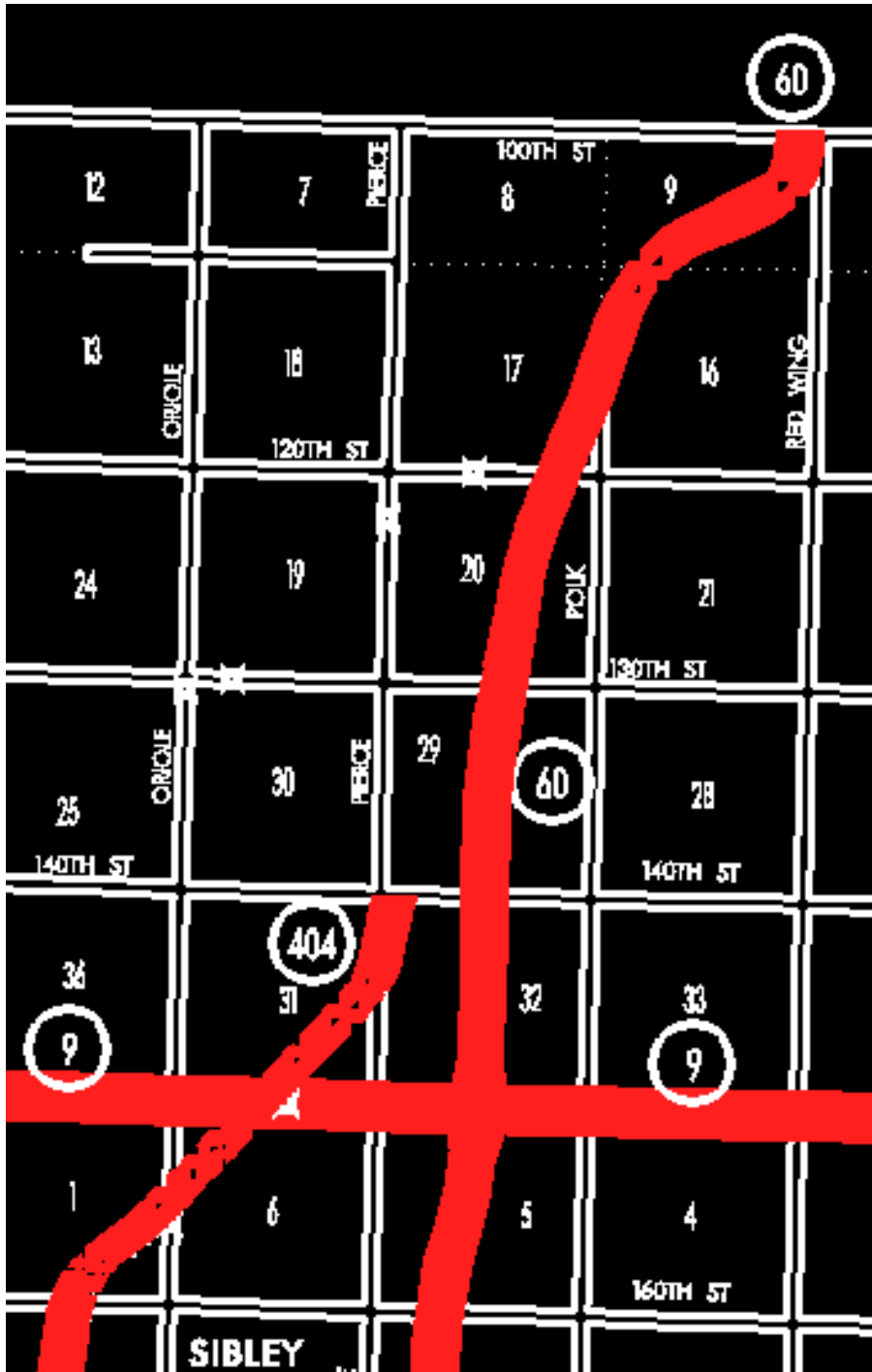
Ashton:

Beginning on an unnamed street at the south corporation line; thence northeast on unnamed street to the east corporation line (approximately 980 feet north of the SE Corner Section 15–T98N–R42W).

Beginning again on the east corporation line of Ashton, connecting with an unnamed street; thence northeasterly, northerly, and northwesterly through Section 14 and 11–T98N–R42W to a point approximately 610 feet east of the NW Corner of said Section 11; thence northeasterly through Section 2–T98N–R42W and Sections 35, 26, 25 and 24–T99N–R42W to a point approximately 1890 feet south of the NE Corner of said Section 24–T99N–R42W; thence easterly and northeasterly and northerly through Sections 19, 20, 17, 8 and 5–T99N–R41W to a point near the N  $\frac{1}{4}$  of Corner Section 5–T99N–R41W; thence northerly following substantially the center section line of Sections 32 and 29–T100N–R41W to a point approximately 100 feet east of the N  $\frac{1}{4}$  Corner of Section 29–T100N–R41W; thence northeasterly through Sections 20, 17, 16 and 9–T100N–R41W to the Iowa–Minnesota State line at a point near the NE Corner of Section 9–T100N–R41W, Osceola County, Iowa.







**OFFICIAL DESCRIPTION CHANGE**

OFFICE: Transportation Data

EFFECTIVE DATE: 11-29-07

ENTERED BY: Darlene Bovee

**ENTERED DATE:** 12-07-07

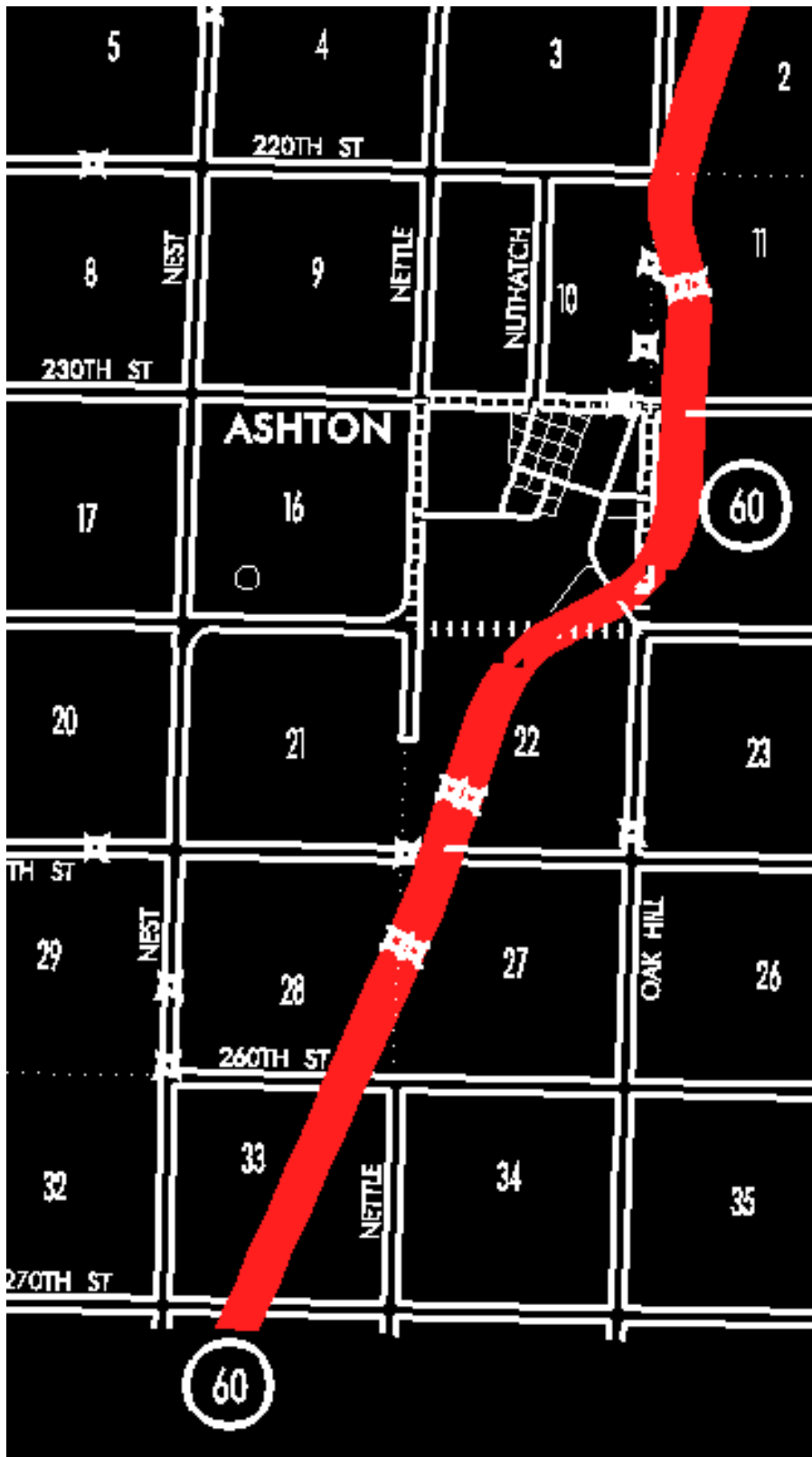
New Description – Iowa 60 and its extensions in Osceola County described as follows:

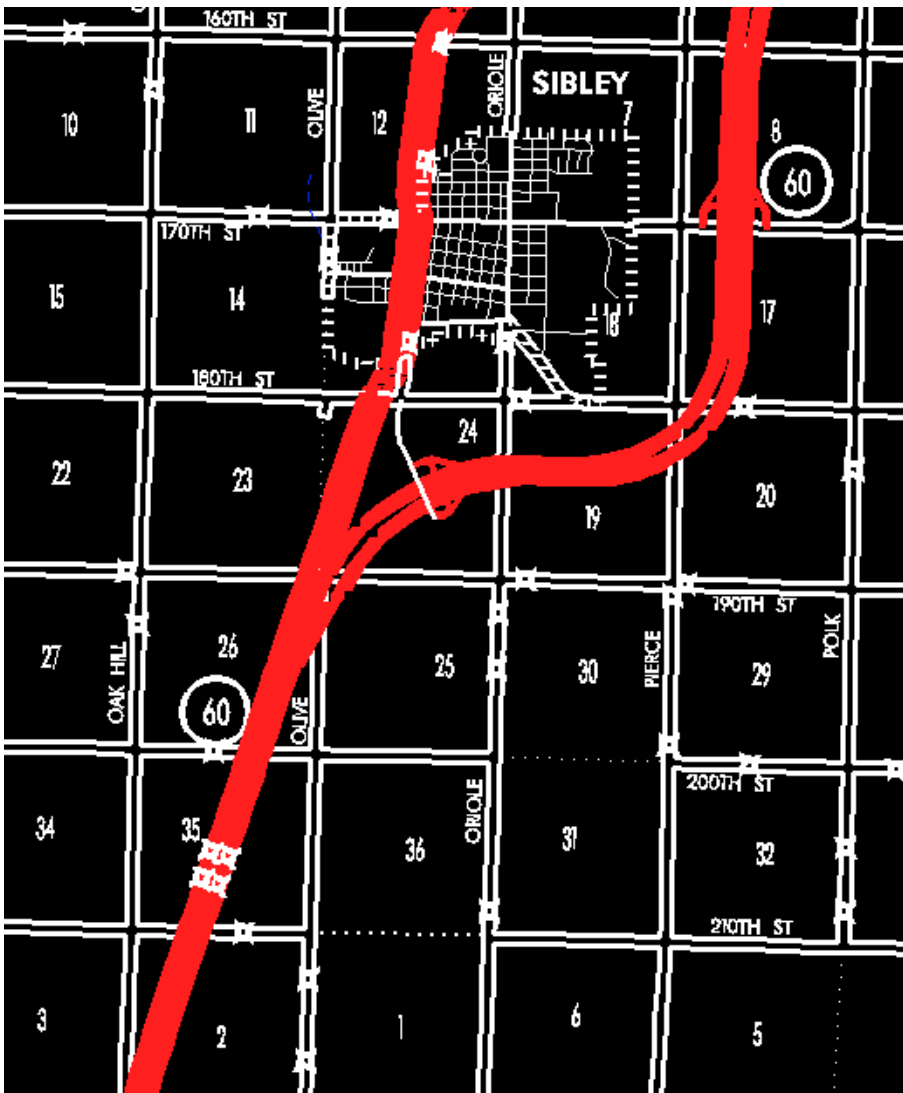
Beginning on the Osceola–O'Brien County line at a point near the S  $\frac{1}{4}$  Corner of Section 33–T98N–R42W, Osceola County (N  $\frac{1}{4}$  Corner of Section 4–T97N–R42W, O'Brien County); thence northeasterly through Sections 33, 28, 27 and 22–T98N–R42W to the south corporation line of Ashton, connecting with an unnamed street (approximately 1580 feet west of the SE Corner of Section 15–T98N–R42W).

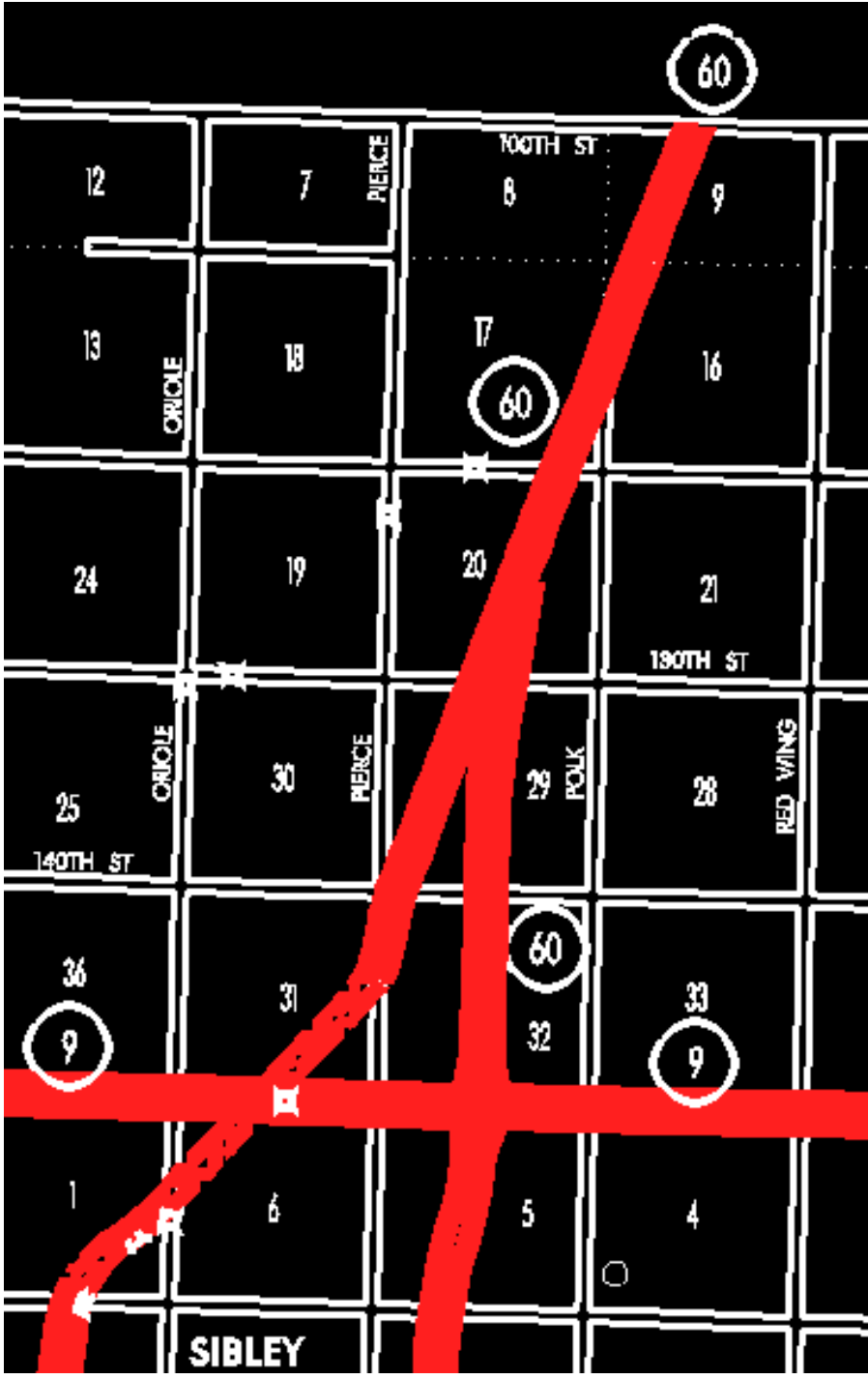
Ashton:

Beginning on an unnamed street at the south corporation line; thence northeast on unnamed street to the east corporation line (approximately 980 feet north of the SE Corner Section 15–T98N–R42W).

Beginning again on the east corporation line of Ashton, connecting with an unnamed street; thence northeasterly, northerly, and northwesterly through Section 14 and 11–T98N–R42W to a point approximately 610 feet east of the NW Corner of said Section 11; thence northeasterly through Section 2–T98N–R42W and Sections 35, 26, 25 and 24–T99N–R42W to a point approximately 1890 feet south of the NE Corner of said Section 24–T99N–R42W; thence easterly and northeasterly and northerly through Sections 19, 20, 17, 8 and 5–T99N–R41W to a point near the N  $\frac{1}{4}$  of Corner Section 5–T99N–R41W; thence northerly following substantially the center section line of Sections 32 and 29–T100N–R41W to a point approximately 100 feet east of the N  $\frac{1}{4}$  Corner of Section 29–T100N–R41W; thence northeasterly through Sections 20, 17, 16 and 9–T100N–R41W to the Iowa–Minnesota State line at a point approximately 3,000 feet west of the NE Corner of Section 9–T100N–R41W, Osceola County, Iowa.







**OFFICIAL DESCRIPTION CHANGE**  
OFFICE: Transportation Data  
EFFECTIVE DATE: 01-10-2006  
ENTERED BY: Stefani Wonders

**ENTERED DATE: 09-06-2006**

New Description – Iowa 60 and its extensions in Osceola County described as follows:

Beginning on the Osceola–O'Brien County line at a point on the east side of the Chicago and Northwestern Railway, approximately 500 feet west of the S  $\frac{1}{4}$  Corner of Section 33–T98N–R42W, Osceola County (N  $\frac{1}{4}$  Corner Section 4–T97N–R42W, O'Brien County); thence northeasterly along the east side of said railroad and substantially parallel thereto, through Sections 33, 28, 27 and 22–T98N–R42W to the south corporation line of Ashton, connecting with an unnamed street (approximately 2175 feet west of the SE Corner of said Section 22).

Ashton:

Beginning on an unnamed street at the south corporation line; thence northeast on unnamed street to the north corporation line (approximately 968 feet north of the SE Corner Section 22–T98N–R42W).

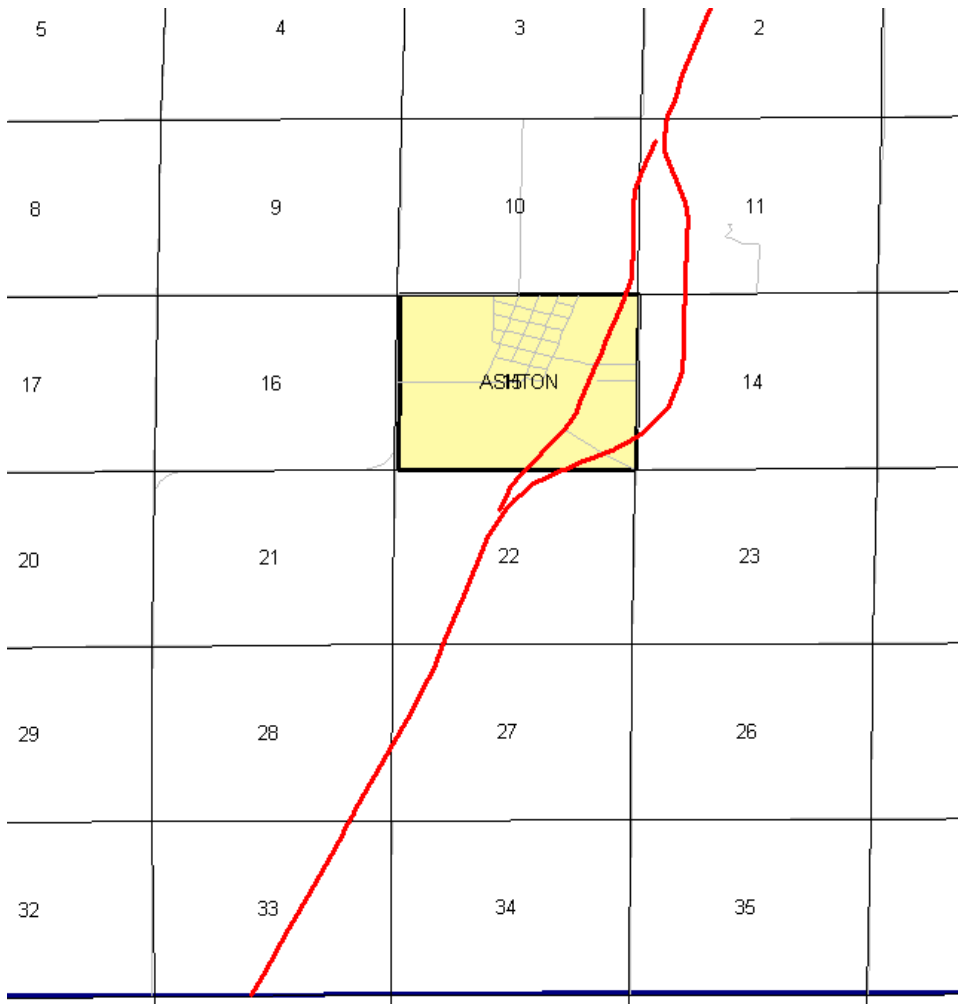
Beginning again on the north corporation line of Ashton, connecting with an unnamed street; thence northeasterly, northerly, and northwesterly through Section 14 and 11–T98N–R42W to a point approximately 822 feet east of the NW Corner of said Section 11; thence northeasterly along the east side of said railroad and substantially parallel thereto through Section 2–T98N–R42W and Sections 35, 26, 25 and 24–T99N–R42W to a point approximately 1,000 feet west of the N  $\frac{1}{4}$  Corner Section 24–T99N–R42W; thence northeasterly and northerly through Section 13–T99N–R42W to the south corporation line of Sibley, connecting with 2nd Avenue (approximately 1705 feet north and 3294 feet east of the SW Corner of said Section 13).

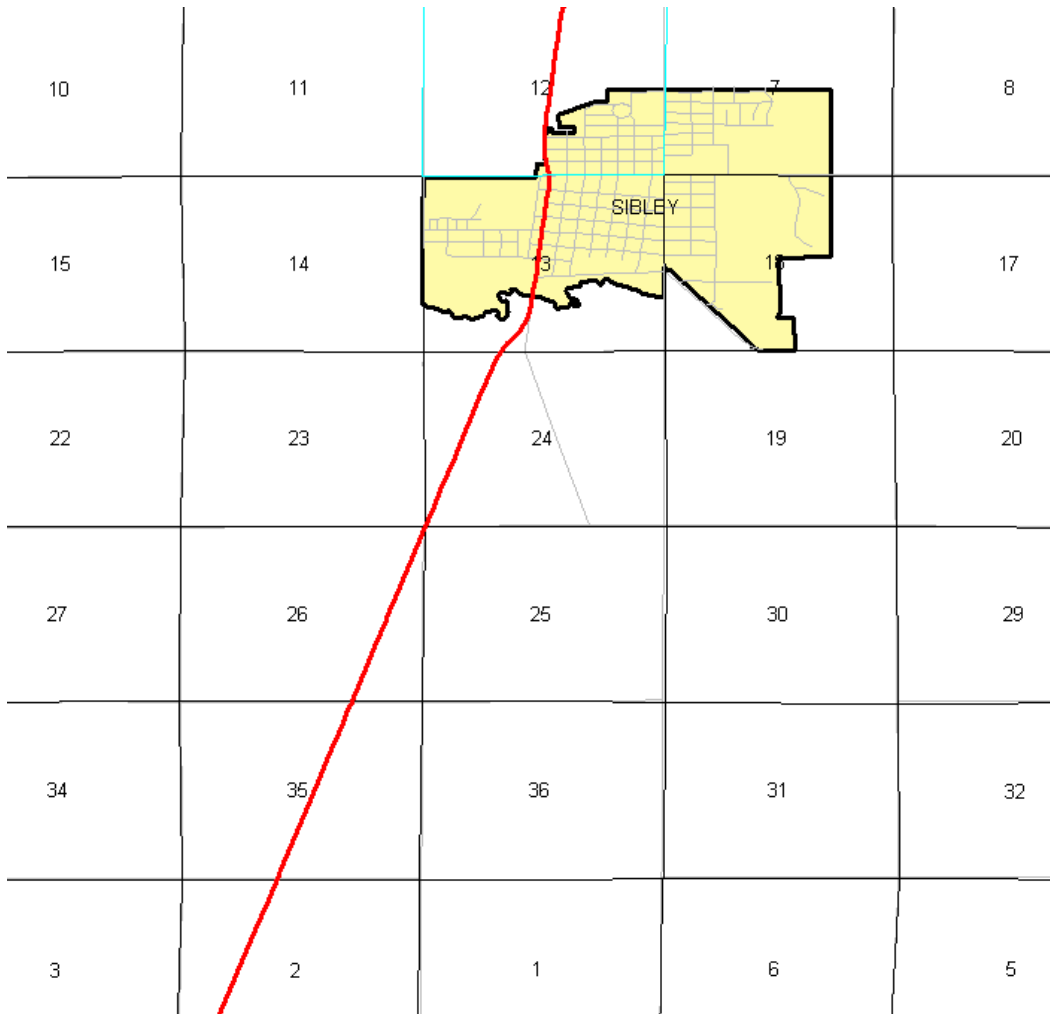
Sibley:

Beginning on 2nd Avenue at the south corporation line; thence northeasterly and northerly on 2nd Avenue to the north corporation line

(approximately 3696 feet east and 367 feet north of the SW Corner Section 12-T99N-R42W).

Beginning again on the north corporation line of Sibley connecting with 2nd Avenue; thence northerly and northeasterly along the east side of the Chicago and Northwestern Railway and substantially parallel thereto through Sections 12 and 1-T99N-R42W and 6-T99N-R41W to a point (junction Iowa 9) approximately 2,430 feet east of the NW Corner Section 6-T99N-R41W; thence northeasterly along the east side of the Chicago and Northwestern Railway and substantially parallel thereto through Sections 31, 32, 29, 20, 17, 16 and 9-T100N-R41W to the Iowa-Minnesota State line at a point approximately 3,000 feet west of the NE Corner of Section 9-T100N-R41W, Osceola County, Iowa.







Section 4–T97N–R42W, O'Brien County); thence northeast along the east side of said railroad and substantially parallel thereto, through Sections 33, 28, 27 and 22–T98N–R42W to the south corporation line of Ashton, connecting with an unnamed street.

Ashton:

Beginning on an unnamed street at the south corporation line; thence northeast on unnamed street to the north corporation line.

Beginning again on the north corporation line of Ashton, connecting with an unnamed street; thence northeast and north through the east part of Section 10–T98N–R42W to a point on the east side of the Chicago and Northwestern Railway approximately 200 feet west of the E ¼ Corner Section 10–T98N–R42W; thence northeast along the east side of said railroad and substantially parallel thereto through Sections 10, 11 and 2–T98N–R42W and Sections 35, 26, 25 and 24–T99N–R42W to a point approximately 1,000 feet west of the N ¼ Corner Section 24–T99N–R42W; thence northeast and north through Section 13–T99N–R42W to the south corporation line of Sibley, connecting with 2nd Avenue.

Sibley:

Beginning on 2nd Avenue at the south corporation line; thence northeast and north on 2nd Avenue to the north corporation line.

Beginning again on the north corporation line of Sibley connecting with 2nd Avenue; thence north and northeast along the east side of the Chicago and Northwestern Railway and substantially parallel thereto through Sections 12 and 1–T99N–R42W and 6–T99N–R41W to a point (junction Iowa 9) approximately 2,430 feet east of the NW Corner Section 6–T99N–R41W; thence northeast along the east side of the Chicago and Northwestern Railway and substantially parallel thereto through Sections 31, 32, 29, 20, 17, 16 and 9–T100N–R41W to the Iowa–Minnesota State line at a point approximately 3,000 feet west of the NE Corner of Section 9–T100N–R41W, Osceola County, Iowa.

**COMMISSION ORDER**

**DIVISION:** Planning & Research

**COMMISSION ORDER NUMBER:** PR-79-272

**SUBMITTED BY:** C.I. MacGillivray

**MEETING DATE:** 11-2-78

**DISCUSSION/BACKGROUND:**

Due to a renew of our Primary Road System records, Iowa 60 in Osceola County should be deleted and the new description added should be officially included into the Primary System.

Iowa 60 begins on the Osceola-O'Brien County line approximately 2 ½ miles east of the SW Corner of Osceola County, and travels northeasterly via Ashton and Sibley to the Iowa-Minnesota State line approximately 8 ½ miles east of the NW Corner of Osceola County, Iowa at Bigelow, Minnesota.

**PROPOSAL/ACTION RECOMMENDATION:**

Locate Iowa 60 and its extensions in Osceola County as follows:

Beginning on the Osceola-O'Brien County line at a point on the east side of the Chicago & Northwestern Railway, approximately 500 feet west of the S ¼ Corner of Section 33-T93N-R42W, Osceola County (N ¼ Corner Section 4-T97N-R42W, O'Brien County); thence in a northeasterly direction along the east side of said railroad and substantially parallel thereto, through Sections 33, 28, 27 and 22-T98N-R42W to the south corporation line of the City of Ashton connecting with an unnamed street.

Ashton:

Beginning on the south corporation line connecting with an unnamed street; thence northeasterly to the north corporation line connecting with an unnamed street.

Beginning again on the north corporation line of the City of Ashton, connecting with an unnamed street; thence in a northeasterly and northerly direction through the east part of Section 10-T93N-R42W to a point on the east side of the Chicago and Northwestern Railway, approximately 200 feet west of the E ¼ Corner Section 10-T98N-R42W; thence in a northeasterly direction along the east side of said railroad and substantially parallel thereto through Sections 10, 11 and 2-T98N-R42W and Sections 35, 26, 25 and 24-T99N-R42W, to a point approximately 1000 feet west of the N ¼ Corner Section 24-T99N-R42W; thence in a northeasterly and northerly direction through Section 13-T99N-R42W to the south corporation line of the City of Sibley, connecting with an unnamed street.

Sibley:

Beginning on the south corporation line connecting with an unnamed street; thence northerly to the north corporation line connecting with an unnamed street.

Beginning again on the north corporation line of the City of Sibley connecting with an unnamed street; thence in a northerly and northeasterly direction along the east side of the Chicago and Northwestern Railway and substantially parallel thereto through Sections 12 and 1-T99N-R42W and 6-T99N-R41W to a point (junction Iowa 9) approximately 2430 feet east of the NW Corner Section 6-T99N-R41W; thence in a northeasterly direction along the east side of the Chicago and Northwestern Railway and substantially parallel thereto through Sections 31, 32, 29, 20, 17, 16 and 9-T100N-R41W to the Iowa-Minnesota state line at a point approximately 3000 feet west of the NE Corner of Section 9-T100N-R41W, Osceola County, Iowa.

NOW, THEREFORE: Be it resolved that the Iowa Department of Transportation approve the location of Iowa 60 in Osceola County, Iowa.

NOTE: To become effective noon the adoption of this resolution.

REVISED: 5-13-87

**OFFICIAL DESCRIPTION CHANGE**

**COUNTY:** Osceola

**ROUTE:** Iowa 60

**APPROVAL DATE:** 12-31-68

Beginning on the Osceola-O'Brien County line at a point on the east side of the Chicago and Northwestern Railway, approximately 500 feet west of the S  $\frac{1}{4}$  Corner of Section 33-T98N-R42W, Osceola County (N  $\frac{1}{4}$  Corner Section 4-T97N-R42W, O'Brien County); thence in a northeasterly direction along the east side of said railroad and substantially parallel thereto, through Section 33, 28, 27 and 22-T98N-R42W to the south corporation line of the Town of Ashton connecting with an unnamed street.

Ashton:

Beginning on unnamed street at the south corporation line; thence northeasterly on unnamed street to the north corporation line.

Beginning again on the north corporation line of the Town of Ashton, connecting with an unnamed street; thence in a northeasterly and northerly direction through the east part of Section 10-T98N-R42W to a point on the east side of the Chicago Northwestern Railway, approximately 200 feet west of the E  $\frac{1}{4}$  Corner Section 10-T98N-R42W; thence in a northeasterly direction along the east side of said railroad and substantially parallel thereto through Section 10, 11, and 2-T98N-R42W and Section 35, 26 and 24-T99N-R42W to a point approximately 1000 feet west of the N  $\frac{1}{4}$  Corner Section 24-T99N-R42W; thence in a northeasterly and northerly direction through Section 13-T99N-R42W to

the south corporation line of the Town of Sibley, connecting with Second Avenue.

Sibley:

Beginning on Second Avenue at the south corporation line; thence northerly on Second Avenue to the north corporation line.

Beginning again on the north corporation line of the Town of Sibley, connecting with Second Avenue; thence in a northerly and northeasterly direction along the east side of the Chicago and Northwestern Railway and substantially parallel thereto through Section 12 and 1-T99N-R42W, Section 6-T99N-R41W and Section 31, 32, 29, 20, 17, 16 and 9-T100N-R41W to the Minnesota State line at a point approximately 3000 feet west of the NE Corner of Section 9-T100N-R41W.

REVISED: 11-2-78