

OFFICIAL DESCRIPTION CHANGE

OFFICE: Transportation Data

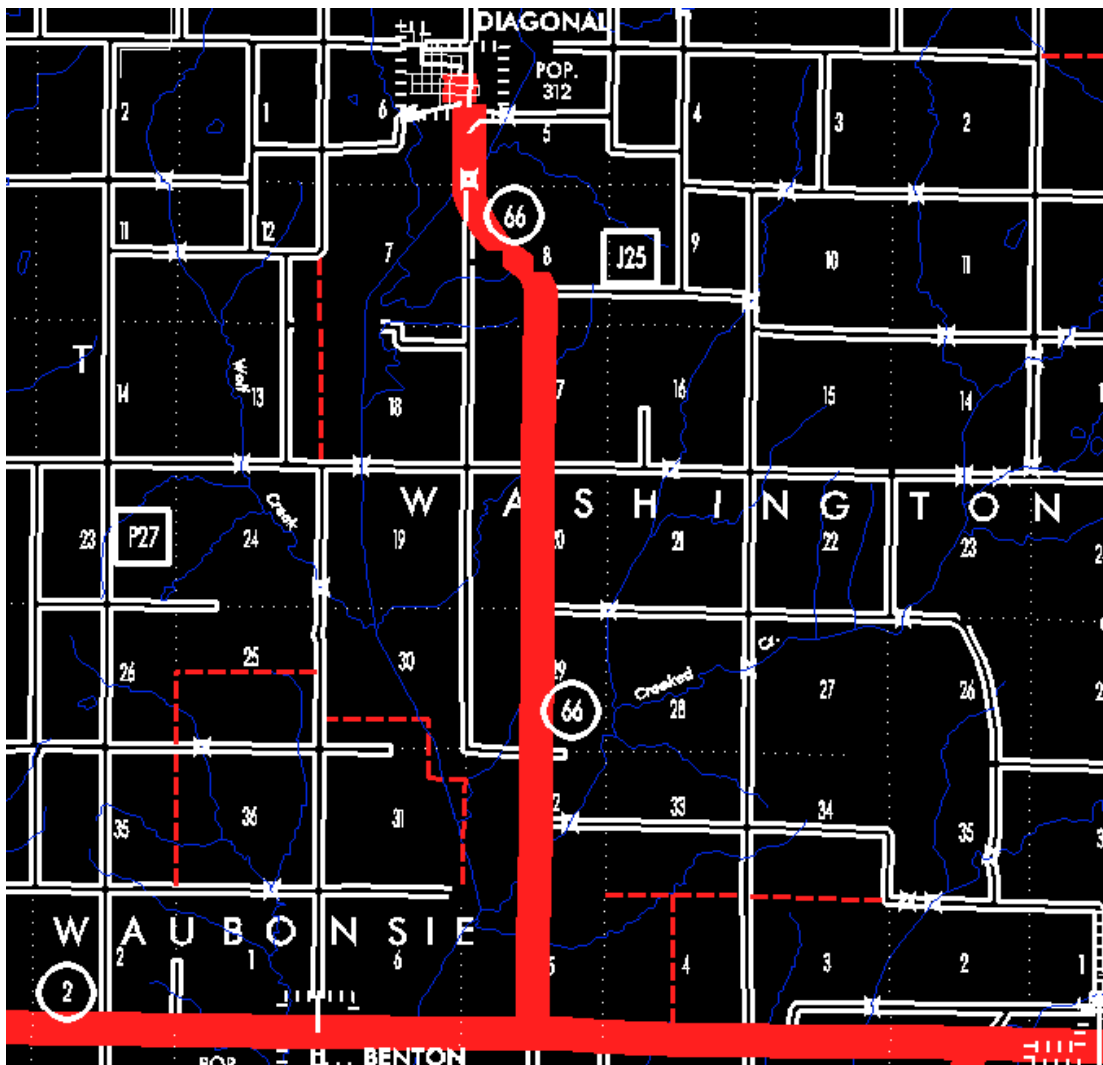
EFFECTIVE DATE: 07-01-2003

ENTERED BY: Stefani Wonders

ENTERED DATE: 08-21-2006

DISCUSSION/BACKGROUND:

Senate File 451 transferred Iowa 66 in its entirety, in Ringgold County, to city and county jurisdiction on July 1, 2003.



OFFICIAL DESCRIPTION CHANGE

COUNTY: Ringgold

ROUTE: Iowa 66

STAFF ACTION NUMBER: S-87-1515

APPROVAL DATE: 5-13-87

New Description – Iowa 66 and its extension in Ringgold County described as follows:

Beginning at a point near the S $\frac{1}{4}$ Corner Section 5-T68N-R30W (junction Iowa 2); thence northerly following substantially the center section line of Section 5-T68N-R30W, and Sections 32, 29, 20, 17 and 8-T69N-R30W to a point approximately $\frac{1}{4}$ mile south of the center of Section 8-T69N-R30W; thence in a northwesterly direction to a point near the NW Corner Section 8-T69N-R30W; thence northerly following substantially the section line of Section 5-T69N-R30W to the south corporation line of Diagonal, connecting with Union Street.

Diagonal:

Commencing on Union Street at the south corporation line; thence north on Union Street approximately 398 feet to an unnamed street; thence northwest on unnamed street to Broadway; thence north on Broadway to the north side of 4th Street.

COMMISSION ORDER

DIVISION: Planning & Research

COMMISSION ORDER NUMBER: PR-79-272

SUBMITTED BY: C.I. MacGillivray

MEETING DATE: 11-2-78

TITLE: Iowa 66, Ringgold County, Iowa

DISCUSSION/BACKGROUND:

Due to a review of our Primary Road System records Iowa 66 in Ringgold County should be deleted and the new description added should be officially included into the Primary System.

Iowa 66 at Iowa 2 at approximately 2 miles northeast of Benton and travels generally northerly to a point in Diagonal, Iowa.

PROPOSAL/ACTION RECOMMENDATION:

Locate Iowa 66 and its extension in Ringgold County as follows:

Beginning at a point near the S $\frac{1}{4}$ Corner Section 5-T68N-R30W (junction Iowa 2); thence northerly following substantially the center section line of Section 5-T68N-R30W, and Sections 32, 29, 20, 17 and 8-T69N-R30W to a point approximately $\frac{1}{4}$ mile south of the center of Section 8-T69N-R30W; thence in a northwesterly direction to a point near the NW Corner Section 8-T69N-R30W; thence northerly following substantially the section line of Section 5-T69N-R30W to the south corporation line of the City of Diagonal connecting with an unnamed street.

Diagonal:

Beginning on the south corporation line connecting with an unnamed street; thence northerly, westerly and northerly to Fourth Street.

NOW, THEREFORE: Be it resolved that the Iowa Department of Transportation approve the location of Iowa 66 in Ringgold County, Iowa.

NOTE: To become effective upon the adoption of this resolution.

REVISED: 5-13-87

OFFICIAL DESCRIPTION CHANGE

COUNTY: Ringgold

CITY OF: Diagonal

ROUTE: Iowa 66

APPROVAL DATE: 4-20-60

Commencing on Union Street at the south corporation line; thence north on Union Street 398 feet to an unnamed street; thence westerly, northerly and westerly on unnamed street to Broadway; thence north on Broadway to the north side of Fourth Street.

OFFICIAL DESCRIPTION CHANGE

COUNTY: Ringgold

ROUTE: Iowa 66

APPROVAL DATE: 10-19-55

Beginning at a point near the S $\frac{1}{4}$ Corner Section 5-T68N-R30W; thence north following substantially the quarter section line to a point approximately $\frac{1}{4}$ mile north of the S $\frac{1}{4}$ Corner Section 8-T69N-R30W; thence in a northwesterly direction to a point near the NW Corner Section 8-T69N-R30W; thence north following substantially the section line to the south corporation line of the Town of Diagonal, connecting with Union (formerly unnamed) Street on the west side of Section 5-T69N-R30W.

REVISED: 6-13-74