

OFFICIAL DESCRIPTION CHANGE

OFFICE: Transportation Data

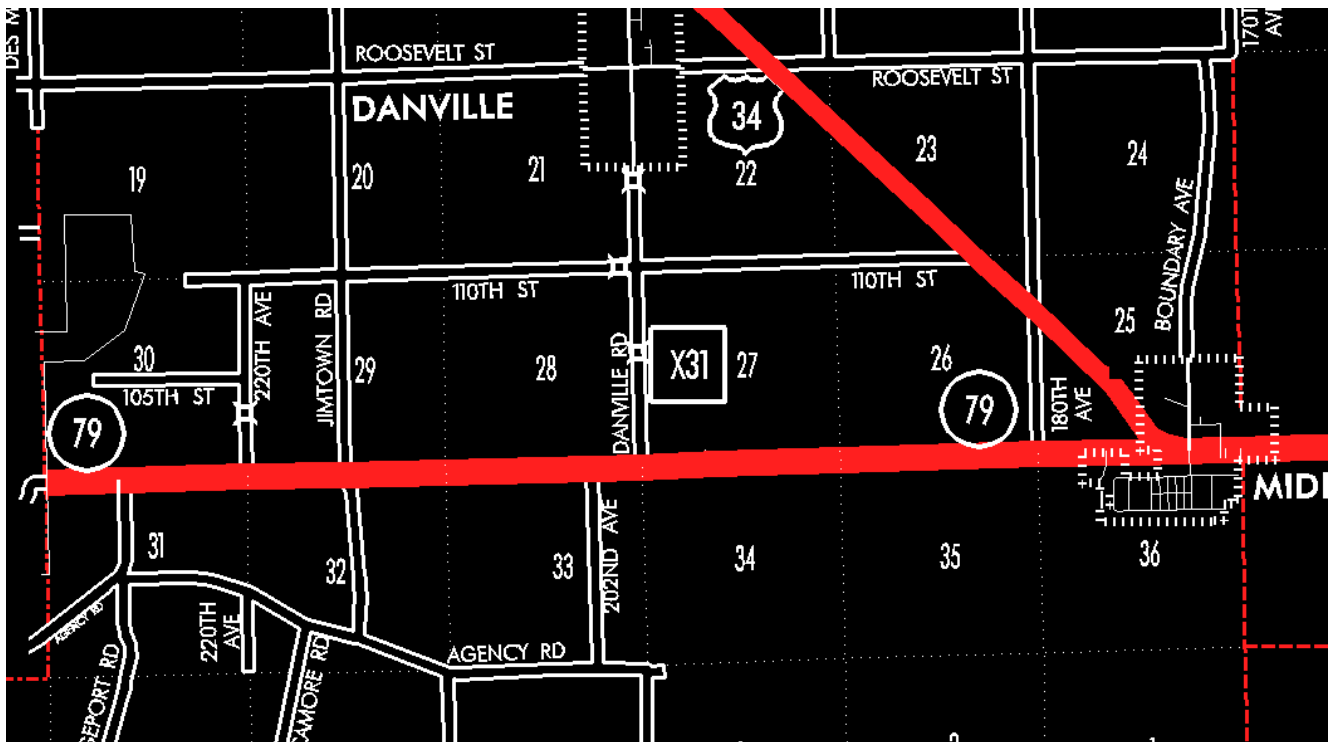
EFFECTIVE DATE: 07-01-2003

ENTERED BY: Stefani Wonders

ENTERED DATE: 08-22-2006

DISCUSSION/BACKGROUND:

Senate File 451 transferred Iowa 79 in its entirety, in Des Moines County, to city and county jurisdiction on July 1, 2003.



COMMISSION ORDER

DIVISION: Planning & Research

COMMISSION ORDER NUMBER: PR-81-261

SUBMITTED BY: Patrick R. Cain

MEETING DATE: 10-28-80

DISCUSSION/BACKGROUND:

Transfer of jurisdiction agreement number TJ-097-1 (1)--2M-29, between Des Moines County and the Iowa Department of Transportation, transferred the section of road from the Des Moines-Henry County line (entrance to Geode State Park) near the NW Corner Section 31-T70N-R4W to state jurisdiction on July 1, 1980. The section is designated Iowa 79.

Transfer of jurisdiction agreement number TJ-097-1 (2)--2M-29, between the City of Middletown and the Iowa Department of Transportation, transferred the section of road from the west corporation line easterly to a junction with US 34 to state jurisdiction on July 1, 1980. The section is designated Iowa 79.

Iowa 79 begins at the Geode State Park on the Des Moines-Henry County line and proceeds easterly to a junction with US 34 in the City of Middletown.

PROPOSAL/ACTION RECOMMENDATION:

It is recommended the commission approve including the attached description of Iowa 79 in Des Moines County in the primary road system.

Locate Iowa 79 and its extension in Des Moines County as follows:

Beginning at the Des Moines-Henry County line (entrance to Geode State Park) at a point near the NW Corner Section 31-T70N-R4W, Des Moines County (NE Corner Section 36-T70N-R5W, Henry County); thence easterly following substantially the section line of Sections 31, 32, 33, 34, 35 and 36-T70N-R4W to the west corporation line of the City of Middletown connecting with an unnamed street.

Middletown:

Beginning on the west corporation line connecting with an unnamed street; thence easterly to US 34.