

OFFICIAL DESCRIPTION CHANGE

OFFICE: Transportation Data

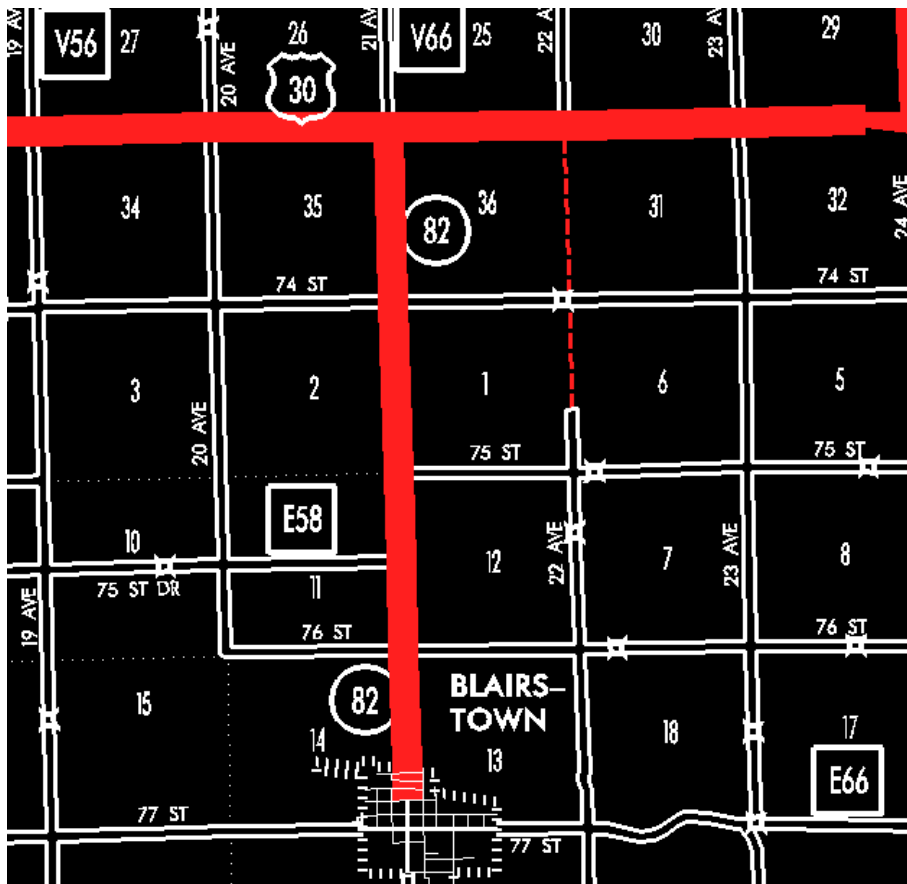
EFFECTIVE DATE: 07-01-2003

ENTERED BY: Stefani Wonders

ENTERED DATE: 08-24-2006

DISCUSSION/BACKGROUND:

Senate File 451 transferred Iowa 82 in its entirety, in Benton County, to city and county jurisdiction on July 1, 2003.



OFFICIAL DESCRIPTION CHANGE

COUNTY: Benton

ROUTE: Iowa 82

STAFF ACTION NUMBER: S-87-687

APPROVAL DATE: 12-18-86

New Description – Iowa 82 and its extension in Benton County described as follows:

Blairstown:

Beginning on Locust Street at the intersection with Benton Street; thence north on Locust Street to the north corporation line.

Beginning at the north corporation line of Blairstown connecting with Locust Street; thence north following substantially the section line of Sections 13, 12, and 1-T82N-R11W; continuing north along section line of Section 36-T83N-R11W to a point near the NW Corner of Section 36-T83N-R11W (intersecting with US 30).

COMMISSION ORDER

DIVISION: Planning & Research

COMMISSION ORDER NUMBER: PR-79-272

SUBMITTED BY: C.I. MacGillivray

MEETING DATE: 11-2-78

DISCUSSION/BACKGROUND:

Due to a review of our Primary Road System records, Iowa 82 in Benton County, Iowa should be deleted and the new description added should be officially included into the Primary System.

Iowa 82 begins in the City of Blirstown and travels northerly to the junction of US 30 approximately 2 $\frac{3}{4}$ miles south of Van Horne.

PROPOSAL/ACTION RECOMMENDATION:

Locate Iowa 82 and its extension in Benton County as follows:

Blirstown:

Beginning on Benton Street; thence north to the north corporation line connecting with an unnamed street.

Beginning at the north corporation line of the City of Blirstown connecting with an unnamed street; thence north following substantially the section line of Sections 13, 12, and 1-T82N-R11W; continuing north along section line of Section 36-T83N-R11W to a point near the NW Corner of Section 36-T83N-R11W (intersecting with US 30).

NOW, THEREFORE: Be it resolved that the Iowa Department of Transportation approve the location of Iowa 82 in Benton County, Iowa.

NOTE: To become effective upon the adoption of this resolution.

REVISED: 12-18-86

COMMISSION ORDER

DIVISION: Planning & Research

SUBMITTED BY: Raymond L. Kassel

MEETING DATE: 8-10-76

DISCUSSION/BACKGROUND:

Due to a review of our Primary Road System records, Iowa 82 in Benton County, Iowa should be deleted and the new description added should be officially included into the Primary System.

Iowa 82 begins in the City of Blirstown and travels northerly to the junction of US 30 approximately 2 $\frac{3}{4}$ miles south of Van Horne.

PROPOSAL/ACTION RECOMMENDATION:

Locate Iowa 82 and its extensions in Benton County as follows:

Blirstown:

Beginning on Benton Street; thence north to the north corporation line connecting with an unnamed street.

Beginning at the north corporation line of the City of Blirstown connecting with an unnamed street; thence north following substantially the section line of Sections 13, 12, and 1-T82N-R11W, continuing north along section line of Section 36-T83N-R11W to a point near the NW Corner of Section 36-T83N-R11W (intersecting with US 30).

NOW, THEREFORE: Be it resolved that the Iowa Department of Transportation approve the location of Iowa 82 in Benton County, Iowa.

NOTE: To become effective upon the adoption of this resolution.

OFFICIAL DESCRIPTION CHANGE

COUNTY: Benton

CITY OF: Blirstown

ROUTE: Iowa 82

APPROVAL DATE: 1-13-60

Commencing on Locust Street at the north corporation line; thence south on Locust Street to Benton Street.

Note to become effective on January 1, 1961.

OFFICIAL DESCRIPTION CHANGE

COUNTY: Benton

ROUTE: Iowa 82

APPROVAL DATE: 4-14-37

Beginning on the north corporation line of the Town of Blirstown connecting with Locust Street thence north following substantially the section line to a point near the NW Corner of Section 36-T83N-R11W.