

OFFICIAL DESCRIPTION CHANGE

OFFICE: Transportation Data

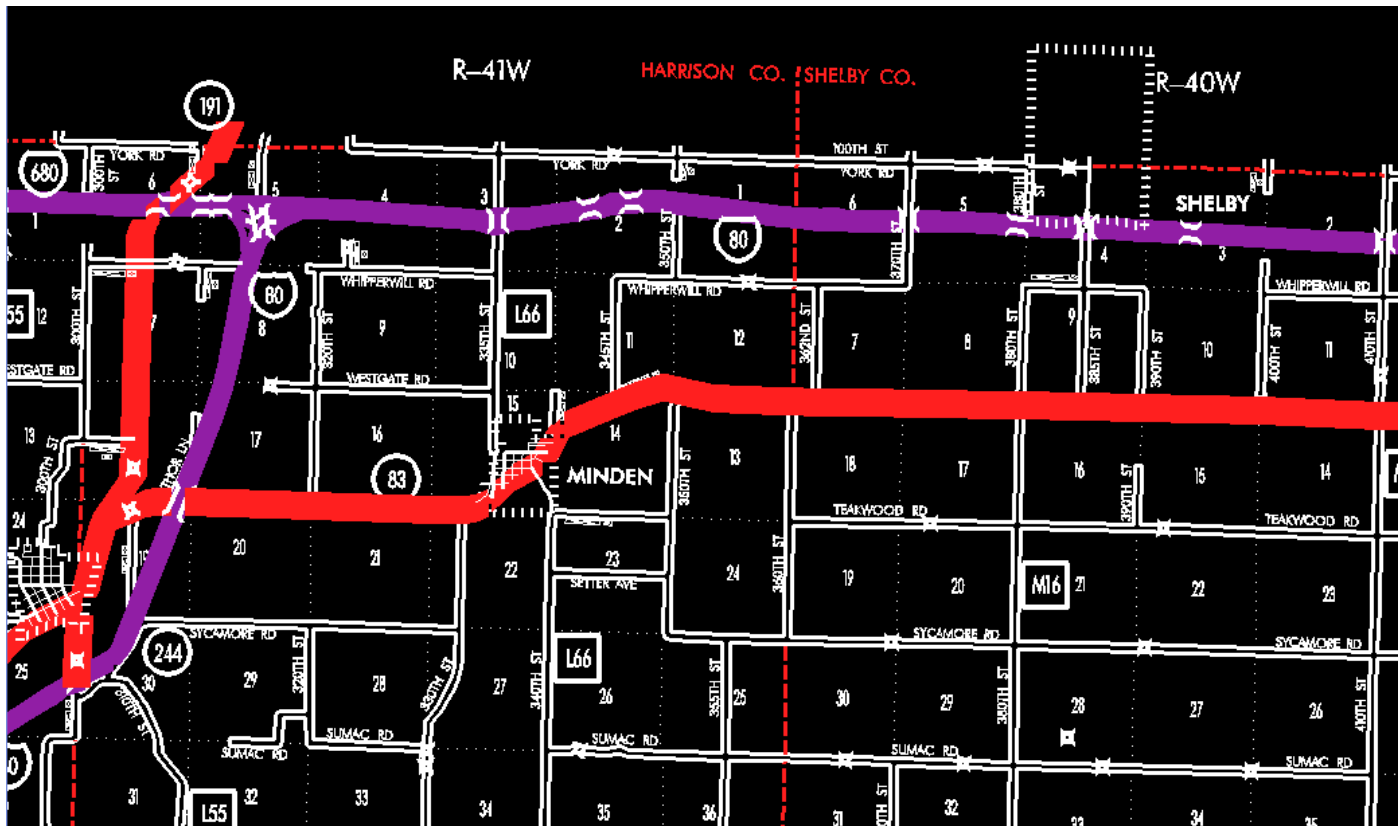
EFFECTIVE DATE: 07-01-2003

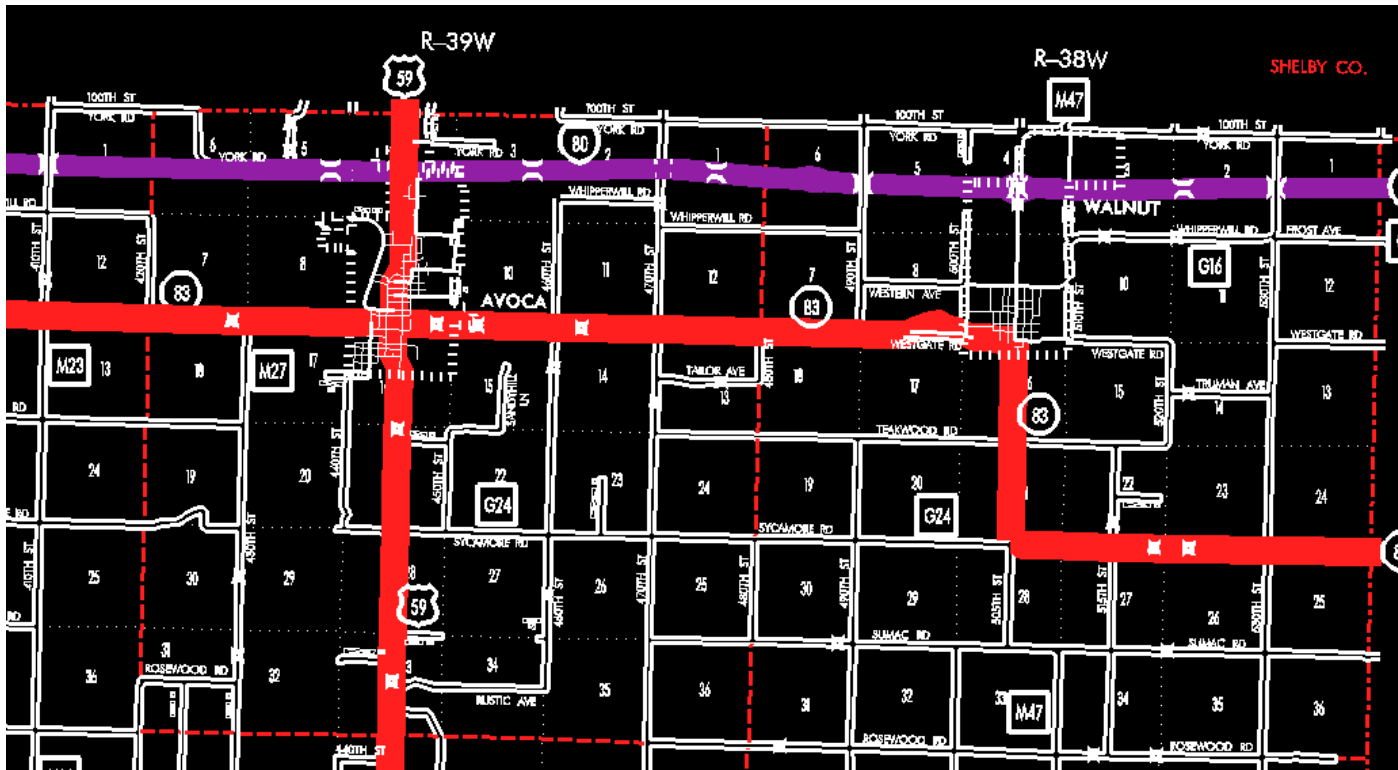
ENTERED BY: Stefani Wonders

ENTERED DATE: 08-22-2006

DISCUSSION/BACKGROUND:

Senate File 451 transferred Iowa 83 in its entirety, in Pottawattamie County, to city and county jurisdiction on July 1, 2003.





OFFICIAL DESCRIPTION CHANGE

COUNTY: Pottawattamie

ROUTE: Iowa 83

STAFF ACTION NUMBER: S-87-1517

APPROVAL DATE: 5-13-87

New Description – Iowa 83 and its extensions in Pottawattamie County described as follows:

Beginning at a point near the center of the NW ¼ Section 19-T77N-R41W (junction Iowa 191); thence northeasterly to a point approximately ¼ mile east of the N ¼ Corner Section 19-T77N-R41W; thence east following substantially the section line of Sections 19, 20, 21 and 22-T77N-R41W to a point approximately ¼ mile east of the SW Corner Section 15-T77N-R41W; thence in a northeasterly direction through the south part of Section 15-T77N-R41W to the west corporation line of Minden connecting with Main Street.

Minden:

Beginning on Main Street at the west corporation line; thence northeasterly on Main Street to the north corporation line.

Beginning again on the north corporation line of Minden connecting with Main Street; thence in a northeasterly and easterly direction through Sections 15, 14 and the south part of Sections 11 and 12-T77N-R41W to a point approximately 900 feet west of the S $\frac{1}{4}$ Corner Section 12-T77N-R41W; thence east following substantially the section line of Section 13-T77N-R41W, Sections 18, 17, 16, 15, 14 and 13-T77N-R40W and Sections 18 and 17-T77N-R39W to the west corporation line of Avoca, connecting with High Street.

Avoca:

Beginning on High Street at the west corporation line; thence east on High Street to the east corporation line.

Beginning again on the east corporation line of Avoca connecting with High Street; thence easterly following substantially the section line of Sections 15, 14 and 13-T77N-R39W and Sections 18 and 17-T77N-R38W to a point approximately 1,500 feet east of the NW Corner Section 17-T77N-R38W; thence in a northeasterly, easterly and southeasterly direction through the south part of Section 8-T77N-R38W to the west corporation line of Walnut, connecting with Pearl Street.

Walnut:

Beginning on Pearl Street at the west corporation line; thence southeasterly and easterly on Pearl Street to Central Street; thence south on Central Street to the south corporation line.

Beginning again on the south corporation line of Walnut, connecting with Central Street; thence southerly following substantially the center section line of Sections 16 and 21–T77N–R38W to a point approximately 700 feet north of the S ¼ Corner Section 21–T77N–R38W; thence curving in a southeasterly direction to a point approximately 700 feet east of the S ¼ Corner Section 21–T77N–R38W; thence east following substantially the section line of Sections 28, 27, 26 and 25–T77N–R38W to the Pottawattamie–Cass County line at a point near the SE Corner Section 24–T77N–R38W, Pottawattamie County (SW Corner Section 19–T77N–R37W, Cass County).

COMMISSION ORDER

DIVISION: Planning & Research

COMMISSION ORDER NUMBER: PR–79–272

SUBMITTED BY: C.I. MacGillivray

MEETING DATE: 11–2–78

DISCUSSION/BACKGROUND:

Due to a review of our Primary Road System records Iowa 83 in Pottawattamie County should be deleted and the new description added should be officially included into the Primary System.

Iowa 83 begins at Iowa 191 approximately 3 miles west of Minden, and travels generally easterly via Minden, Avoca and Walnut to the Pottawattamie–Cass County line approximately 4 miles south of the NE Corner of Pottawattamie County, Iowa.

PROPOSAL/ACTION RECOMMENDATION:

Locate Iowa 83 and its extensions in Pottawattamie County as follows:

Beginning at a point near the center of the NW ¼ Section 19–T77N–R41W (junction Iowa 191); thence northeasterly to a point approximately ¼ mile east of the N ¼ Corner Section 19–T77N–R41W; thence east following

substantially the section line of Sections 19, 20, 21 and 22-T77N-R41W to a point approximately $\frac{1}{4}$ mile east of the SW Corner Section 15-T77N-R41W; thence in a northeasterly direction through the south part of Section 15-T77N-R41W to the west corporation line of the City of Minden connecting with an unnamed street.

Minden:

Beginning on the west corporation line connecting with an unnamed street; thence generally northeasterly to the north corporation line connecting with an unnamed street.

Beginning again on the north corporation line of the City of Minden connecting with an unnamed street; thence in a northeasterly and easterly direction through Sections 15, 14 and the south part of Sections 11 and 12-T77N-R41W to a point approximately 900 feet west of the S $\frac{1}{4}$ Corner Section 12-T77N-R41W; thence east following substantially the section line of Section 13-T77N-R41W, Sections 18, 17, 16, 15, 14 and 13-77N-R40W and Sections 18 and 17-T77N-R39W to the west corporation line of the City of Avoca connecting with an unnamed street.

Avoca:

Beginning on the west corporation line connecting with an unnamed street; thence easterly to the east corporation line connecting with an unnamed street.

Beginning again on the east corporation line of the City of Avoca connecting with an unnamed street; thence easterly following substantially the section line of Sections 15, 14 and 13-T77N-R39W and Sections 18 and 17-T77N-R38W to a point approximately 1500 feet east of the NW Corner Section 17-T77N-R38W; thence in a northeasterly, easterly and southeasterly direction through the south part of Section 8-T77N-R38W to the west corporation line of the City of Walnut connecting with an unnamed street.

Walnut:

Beginning on the west corporation line connecting with an unnamed street; thence southeasterly, easterly and southerly to the south corporation line connecting with an unnamed street.

Beginning again on the south corporation line of the City of Walnut, connecting with an unnamed street; thence southerly following substantially the center section line of Sections 16 and 21-T77N-R38W to a point approximately 700 feet north of the S ¼ Corner Section 21-T77N-R38W; thence curving in a southeasterly direction to a point approximately 700 feet east of the S ¼ Corner Section 21-T77N-R38W; thence east following substantially the section line of Sections 28, 27, 26 and 25-T77N-R38W to the Pottawattamie-Cass County line at a point near the SE Corner Section 24-T77N-R38W Pottawattamie County (SW Corner Section 19-T77N-R37W Cass County).

NOW, THEREFORE: Be it resolved that the Iowa Department of Transportation approve the location of Iowa 83 in Pottawattamie County, Iowa.

NOTE: To become effective upon the adoption of this resolution.

REVISED: 5-13-87

OFFICIAL DESCRIPTION CHANGE

COUNTY: Pottawattamie

ROUTE: Iowa 83

APPROVAL DATE: 8-26-59

Beginning at a point near the center of the NW ¼ Section 19-T77N-R41W; thence northeasterly to a point approximately ¼ mile east of the N ¼ Corner Section 19-T77N-R41W; thence east following substantially the section line to a point approximately ¼ mile east of the SW Corner Section 15-T77N-R41W; thence in a northeasterly direction through the south part of Section 15-T77N-R41W to the west corporation line of the Town of Minden, connecting with Main Street.

Beginning again on the north corporation line of the Town of Minden connecting with Main Street; thence in a northeasterly and easterly direction through Sections 15, 14 and the south part of Sections 11 and 12-T77N-R41W to a point approximately 900 feet west of the S ¼ Corner Section 12-T77N-R41W; thence east following substantially the section line to the west corporation line of the Town of Avoca, connecting with High Street.

Beginning again on the east corporation line of the Town of Avoca, connecting with High Street; thence east following substantially the section line to a point approximately 1,500 feet east of the NW Corner Section 17-T77N-R38W; thence in a northeasterly, easterly and southeasterly direction through the south part of Section 8-T77N-R38W, to the west corporation line of the Town of Walnut, connecting with Pearl Street.

Beginning again on the south corporation line of the Town of Walnut, connecting with Central Street; thence south following substantially the quarter section line to a point approximately 700 feet north of the S ¼ Corner Section 21-T77N-R38W; thence curving in a southeasterly direction to a point approximately 700 feet east of the S ¼ Corner Section 21-T77N-R38W; thence east following substantially the section line to the Pottawattamie-Cass County line at a point near the SE Corner Section 24-T77N-R38W, Pottawattamie County (SW Corner Section 19-T77N-R37W, Cass County).

REVISED: 11-2-78

OFFICIAL DESCRIPTION CHANGE

COUNTY: Pottawattamie

CITY OF: Minden

ROUTE: Iowa 83

APPROVAL DATE: 4-28-59

Commencing on Main Street at the west corporation line; thence northeasterly on Main Street to the north corporation line.

REVISED: 11-2-78

OFFICIAL DESCRIPTION CHANGE

COUNTY: Pottawattamie

CITY OF: Avoca

ROUTE: Iowa 83

APPROVAL DATE: 8-26-59

Commencing on High Street at the west corporation line; thence easterly on High Street to the east corporation line.

REVISED: 6-14-74

OFFICIAL DESCRIPTION CHANGE

COUNTY: Pottawattamie

CITY OF: Walnut

ROUTE: Iowa 83

APPROVAL DATE: 2-5-36

Commencing on Pearl Street at the west corporation line; thence southeasterly and easterly on Pearl Street to Central Street; thence southerly on Central Street to the south corporation line.

REVISED: 8-26-59