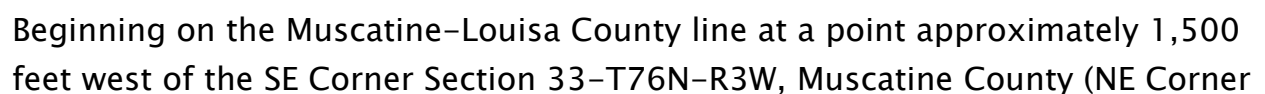
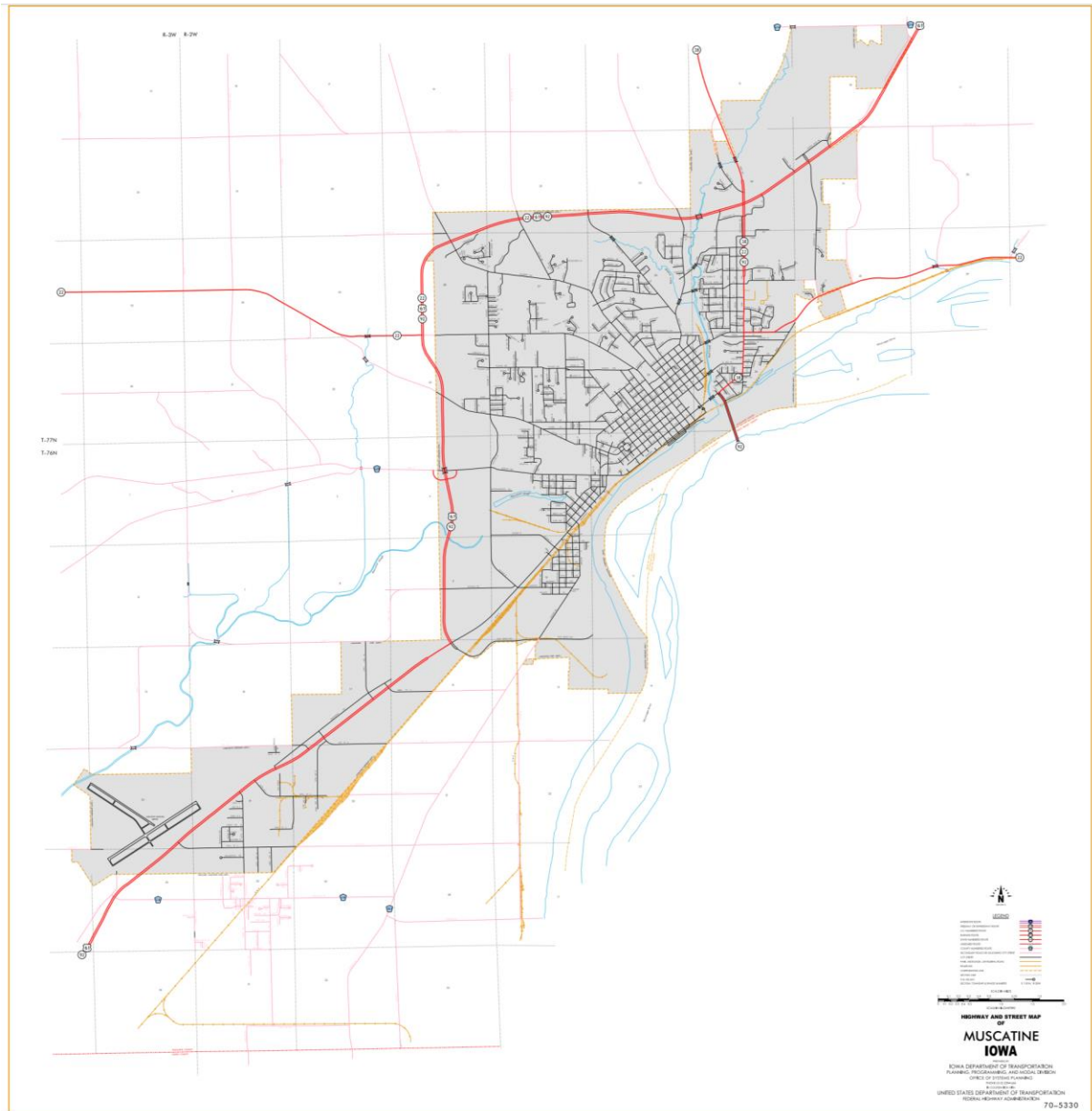


ENTERED DATE: 12-13-19



Section 4-T75N-R3W, Louisa County); then in a northeasterly, easterly, and northeasterly direction through Sections 33, 34, 35, 26, and 25-T76N-R3W to the south corporation line of Muscatine, connecting with Grandview Avenue.



Muscatine:

Beginning on Grandview Avenue at the south corporation line; then northeasterly on Grandview Avenue; then northeast and north and northwest to the west corporation line.

Beginning again at the west corporation line of Muscatine; thence northwesterly and north and northeast through Sections 33 (west junction Iowa 22) and 28–T77N–R02W to the west corporation line of Muscatine.

Muscatine:

Beginning at the west corporation line; then northeast and easterly connecting with Park Avenue (north junction Iowa 38); then south on Park Avenue (east junction IA 22) connecting with 2nd Street; then southwest on 2nd Street to the south junction of Iowa 38; then southeasterly to the Illinois State line and south corporation line.

OFFICIAL DESCRIPTION CHANGE

COUNTY: Muscatine

ROUTE: Iowa 92

STAFF ACTION NUMBER: S-87-1525

APPROVAL DATE: 5-13-87

New Description – Iowa 92 and its extension in Muscatine County described as follows:

Beginning on the Muscatine–Louisa County line at a point approximately 1,500 feet west of the SE Corner Section 33–T76N–R3W, Muscatine County (NE Corner Section 4–T75N–R3W, Louisa County); then in a northeasterly, easterly, and northeasterly direction through Sections 33, 34, 35, 26, and 25–T76N–R3W to the south corporation line of Muscatine, connecting with Grandview Avenue.

Muscatine:

Beginning on Grandview Avenue at the south corporation line; then northeasterly on Grandview Avenue to Green Street; then northerly on Green Street to Hershey Avenue; then easterly on Hershey Avenue to Mississippi Drive; then northeasterly on Mississippi Drive to Mulberry Avenue; then northwesterly

on Mulberry Avenue to 2nd Street; then northeasterly on 2nd Street to Cypress Street; then southeasterly on Cypress Street to the Illinois State line and the corporation line.

COMMISSION ORDER

DIVISION: Planning & Research

COMMISSION ORDER NUMBER: PR-79-272

SUBMITTED BY: C.I. MacGillivray

MEETING DATE: 11-2-78

TITLE: Iowa 92, Muscatine County

DISCUSSION/BACKGROUND:

Due to a review of our Primary Road System records, Iowa 92 in Muscatine County should be deleted and the new description added should be officially included into the Primary System.

Iowa 92 begins on the Muscatine-Louisa County line approximately 2 miles east of Letts, and travels northeasterly and southeasterly via the City of Muscatine to the Illinois State line on the east side of the City of Muscatine.

PROPOSAL/ACTION RECOMMENDATION:

Locate Iowa 92 and its extension in Muscatine County as follows:

Beginning on the Muscatine-Louisa County line at a point approximately 1500 feet west of the SE Corner Section 33-T76N-R3W, Muscatine County (NE Corner Section 4-T75N-R3W, Louisa County); thence in a northeasterly, easterly, and northeasterly direction through Sections 33, 34, 35, 26, and 25-T76N-R3W to the south corporation line of the City of Muscatine, connecting with an unnamed street.

Muscatine:

Beginning on the south corporation line, connecting with an unnamed street; thence in a northeasterly and southeasterly direction to the east corporation line (Iowa-Illinois State line).

NOW, THEREFORE: Be it resolved that the Iowa Department of Transportation approve the location of Iowa 92 in Muscatine County, Iowa.

NOTE: To become effective upon the adoption of this resolution.

REVISED: 5-13-87

COMMISSION RESOLUTION

DIVISION: Planning & Research

COMMISSION ORDER NUMBER: 72-1494

SUBMITTED BY: Robert L. Humphrey

MEETING DATE: 12-8-72

TITLE: Approving revision of the location of Iowa 92 in Muscatine

Locate Iowa 92 in Muscatine, Muscatine County, Iowa, as follows:

Beginning on Grandview Avenue at the west corporation line; thence northeasterly on Grandview Avenue to Green Street; thence northerly on Green Street to Hershey Avenue; thence easterly on Hershey Avenue to Mississippi Drive; thence northeasterly on Mississippi Drive to Mulberry Avenue; thence northwesterly on Mulberry Avenue to Second Street; thence northeasterly on Second Street to Cypress Street; thence southeasterly on Cypress Street to the Illinois State line and the corporation line.

NOW THEREFORE: Be it resolved that the Iowa State Highway Commission approve the revision of Iowa 92 in Muscatine, Muscatine County, Iowa.

NOTE: To become effective upon adoption of this resolution.

REVISED: 11-2-78

OFFICIAL DESCRIPTION CHANGE

COUNTY: Muscatine

CITY OF: Muscatine

ROUTE: Iowa 92

APPROVAL DATE: 12-8-72

Beginning on Grandview Avenue at the west corporation line; thence northeasterly on Grandview Avenue to Green Street; thence northerly on Green Street to Hershey Avenue; thence easterly on Hershey Avenue to Mississippi Drive; thence northeasterly on Mississippi Drive to Mulberry Avenue; thence northwesterly on Mulberry Avenue to Second Street; thence northeasterly on Second Street to Cypress Street; thence southeasterly on Cypress Street to the Illinois State line and the corporation line.

REVISED: 11-2-78

OFFICIAL DESCRIPTION CHANGE

COUNTY: Muscatine

CITY OF: Muscatine

ROUTE: Iowa 92

APPROVAL DATE: 2-20-40

Commencing on Grandview Avenue at the West Corporation line; thence northeasterly on Grandview Avenue to Green Street; thence northerly on Green Street to Hershey Avenue; thence easterly on Hershey Avenue to Front Street; thence northeasterly on Front Street to Cedar Street; thence northwesterly on Cedar Street to Second Street; thence northeasterly on Second Street to Walnut Street; thence southeasterly on Walnut Street to the Illinois State line and the corporation line.

REVISED: 12-8-72

OFFICIAL DESCRIPTION CHANGE

COUNTY: Muscatine

ROUTE: Iowa 92

APPROVAL DATE: 4-14-37

Beginning on the Muscatine-Louisa County line at a point approximately 1500 feet west of the SE Corner Section 33-T76-R3W, Muscatine County (NE Corner Section 4-T75-R3W, Louisa County) thence in a northeasterly, southeasterly, easterly and northeasterly direction through Sections 33, 34, 35, 26, 25, and 24-T76-R3W and in a northeasterly direction through Sections 19, 20, 17, 16, and 9-T76-R2W to the west corporation line of the City of Muscatine, connecting with Grandview Avenue.

NOTE: Revised from Iowa 2 to Iowa 92 November 22, 1938.

REVISED: 11-22-38