

OFFICIAL DESCRIPTION CHANGE

OFFICE: Transportation Data

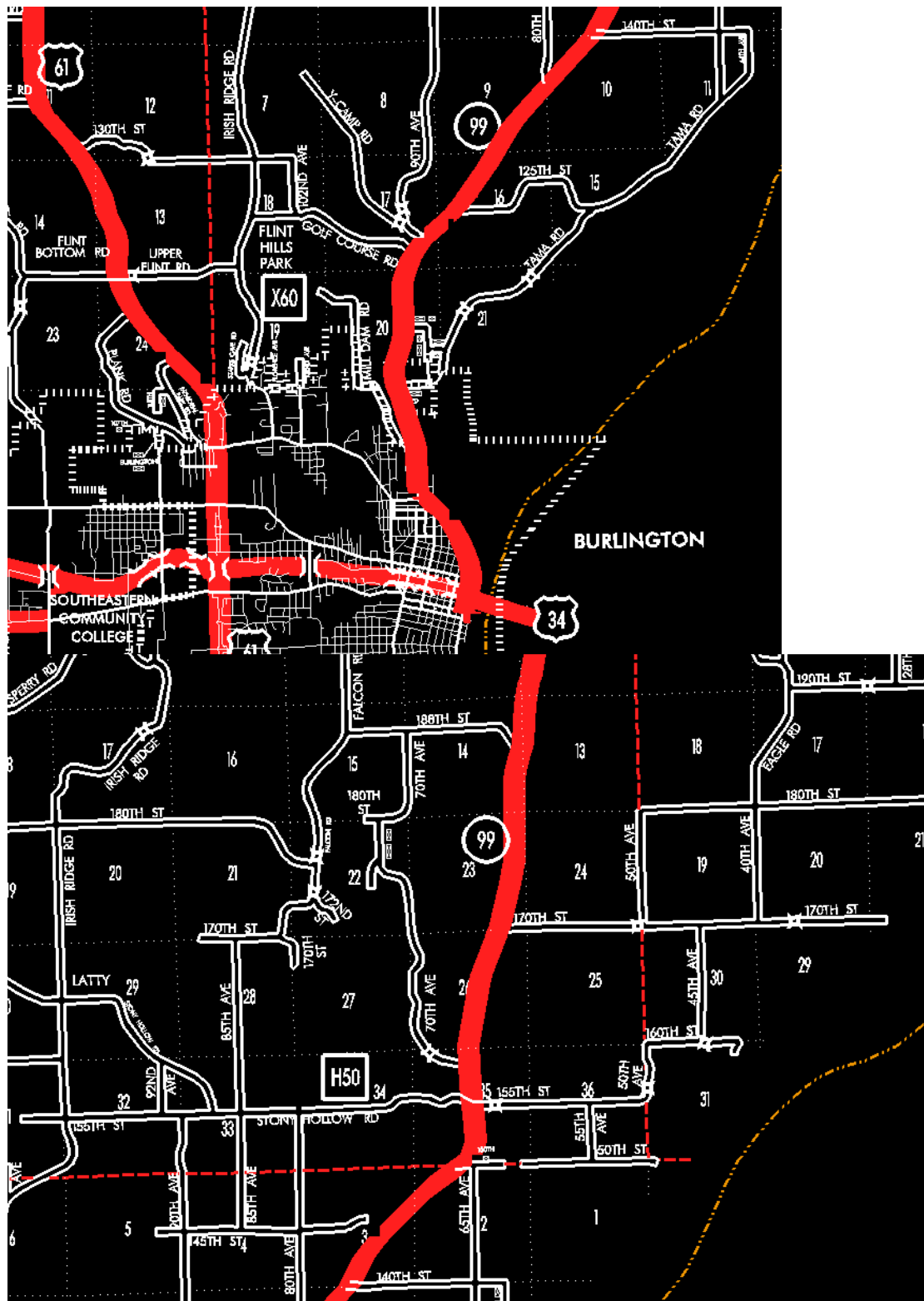
EFFECTIVE DATE: 07-01-2003

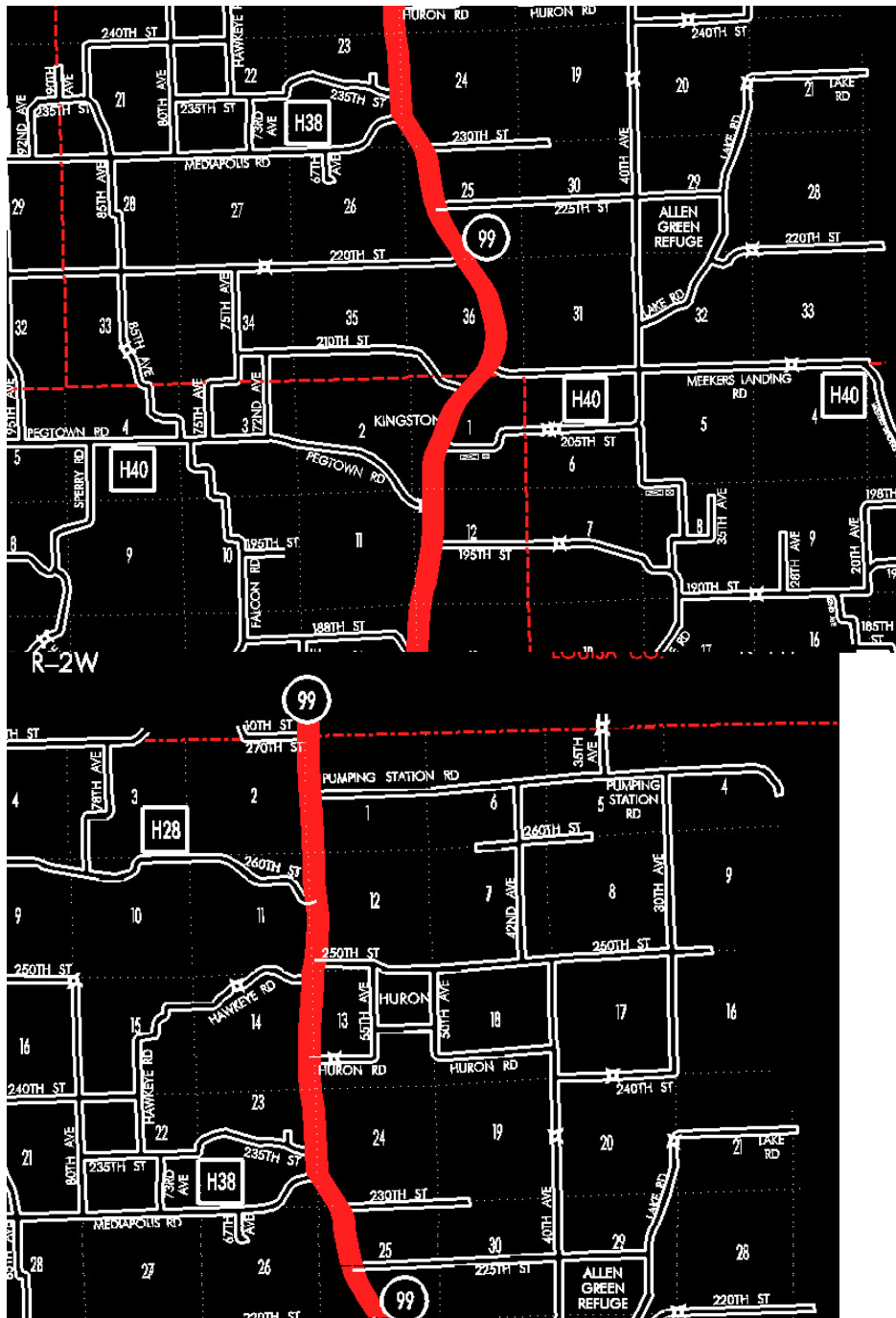
ENTERED BY: Stefani Wonders

ENTERED DATE: 08-22-2006

DISCUSSION/BACKGROUND:

Senate File 451 transferred Iowa 99 in its entirety, in Des Moines County, to city and county jurisdiction on July 1, 2003.





OFFICIAL DESCRIPTION CHANGE

COUNTY: Des Moines

ROUTE: Iowa 99

STAFF ACTION NUMBER: S-87-704

APPROVAL DATE: 12-18-86

New Description – Iowa 99 and its extensions in Des Moines County described as follows:

Burlington:

Beginning on Bluff Road at the intersection with Columbia Street and the south ramp of US 34; thence northeast, north, and northwest on Bluff Road to 9th Street; thence north on 9th Street to Cash Street; thence west on Cash Street to Des Moines Avenue; thence north on Des Moines Avenue to the north corporation line.

Beginning on the north corporation line of Burlington connecting with Des Moines Avenue; thence in a northerly and northwesterly direction through Sections 29 and 20-T70N-R2W to the south corporation line of Burlington, connecting with Des Moines Avenue.

Burlington:

Beginning on Des Moines Avenue at the south corporation line; thence north on Des Moines Avenue to the north corporation line.

Beginning again on the north corporation line of Burlington; connecting with Des Moines Avenue; thence in a northeasterly direction through Sections 20, 17, 16, 9, 10, 3 and 2-T70N-R2W, and in a generally northerly direction through Sections 35, 26, 27, 14, 13, 12 and 1-T71N-R2W and Sections 36, 25, 24, 23, 14, 13, 12 and 1-T72N-R2W to the Des Moines-Louisa County line at a point near the NW Corner Section 1-T72N-R2W, Des Moines County (SW Corner Section 36-T73N-R2W, Louisa County).

COMMISSION ORDER

DIVISION: Planning & Research

COMMISSION ORDER NUMBER: PR-79-272

SUBMITTED BY: C.I. MacGillivray

MEETING DATE: 11-2-78

DISCUSSION/BACKGROUND:

Due to a review of our Primary Road System Records Iowa 99 in Des Moines County should be deleted and the new description added should be officially included into the Primary System.

PROPOSAL/ACTION RECOMMENDATION:

It is recommended that the old description of Iowa 99 in Des Moines County be deleted and the new description as referred in the attached detailed description, be included in the Primary Road System effective upon the adoption of this resolution.

Locate Iowa 99 and its extensions in Des Moines County as follows:

Burlington:

Beginning on an unnamed street at the ramp north to US 34 thence westerly, northerly, northwesterly, northerly, westerly and northerly to the north corporation line connecting with an unnamed street.

Beginning on the north corporation line of the City of Burlington connecting with an unnamed street; thence in a northerly and northwesterly direction through Sections 29 and 20-T70N-R2W to the south corporation line of the City of Burlington, connecting with an unnamed street.

Burlington:

Beginning on the south corporation line connecting with an unnamed street; thence northerly to the north corporation line connecting with an unnamed street.

Beginning again on the north corporation line of the City of Burlington; connecting with an unnamed street; thence in a northeasterly direction through Sections 20, 17, 16, 9, 10, 3 and 2-T70N-R2W and in a generally northerly direction through Sections 35, 26, 23, 14, 13, 12 and 1-T71N-R2W and Sections 36, 25, 24, 14, 13, 12 and 1-T72N-R2W to the Des Moines-Louisa County line at a point near the NW Corner Section 1-T72N-R2W, Des Moines County (SW Corner Section 36-T73N-R2W, Louisa County).

REVISED 12-18-86

COMMISSION RESOLUTION

DIVISION: Planning & Research

COMMISSION ORDER NUMBER: 73-1611

SUBMITTED BY: Gene R. Mills

MEETING DATE: 12-19-73

Locate Iowa 99 in Des Moines County as follows:

Beginning on the north corporation line of the City of Burlington, connecting with Des Moines Avenue; thence in a northerly and northwesterly direction to the south corporation line of the City of Burlington, connecting with an unnamed street (Station 134+99).

Beginning again on the north corporation line of the City of Burlington, connecting with an unnamed street (Station 140+59); thence in a northeasterly direction through Sections 20, 17, 16, 9, 10, 3 and 2-T70N-R2W, and in a northerly direction through Sections 35, 26, 23, 14, 13, 12 and 1-T71N-R2W and Sections 36, 25, 24, 23, 14, 12 and 1-T72N-R2W to the Des Moines-Louisa County line at a point near the NW Corner Section 1-T72N-R2W, Des Moines County (SW Corner Section 36-T73N-R2W, Louisa County).

Burlington:

Beginning at a point on Columbia Street at the junction of Columbia Street and the ramp to US 34; thence westerly on Columbia Street approximately 150 feet to Main Street; thence northerly on Main Street to Bluff Road; thence northwesterly on Bluff Road to Ninth Street; thence north on Ninth Street to Cash Street; thence west on Cash Street to Des Moines Avenue; thence north on Des Moines Avenue to the north corporation line.

Beginning again on the south corporation line on the extension of Des Moines Avenue (Station 134+99); thence north on the extension of Des Moines Avenue to the north corporation line (Station 140+59).

NOW, THEREFORE: Be it resolved that the Iowa State Highway Commission approve the location of Iowa 99 and its extension in Des Moines County, Iowa.

NOTE: To become effective upon adoption of this resolution.

REVISED: 1978

OFFICIAL DESCRIPTION CHANGE**COUNTY:** Des Moines**ROUTE:** Iowa 99**APPROVAL DATE:** 12-19-73

Beginning on the north corporation line of the City of Burlington, connecting with Des Moines Avenue; thence in a northerly and northwesterly direction to the south corporation line of the City of Burlington, connecting with an unnamed street (Station 134+99).

Beginning again on the north corporation line of the City of Burlington, connecting with an unnamed street (Station 140+59) thence in a northeasterly direction through Sections 20, 17, 16, 9, 10, 3 and 2-T70N-R2W, and in a northerly direction through Sections 35, 26, 23, 14, 13, 12 and 1-T71N-R2W and Sections 36, 25, 24, 23, 14, 12 and 1-T72N-R2W to the Des Moines-Louisa County Line at a point near the NW Corner Section 1-T72N-R2W (SW Corner Section 36-T73N-R2W, Louisa County).

OFFICIAL DESCRIPTION CHANGE**COUNTY:** Des Moines**CITY OF:** Burlington**ROUTE:** Iowa 99**APPROVAL DATE:** 12-19-73

Beginning at a point on Columbia Street at the junction of Columbia Street and the ramp to US 34; thence westerly on Columbia Street approximately 150 feet to Main Street; thence northerly on Main Street to Bluff Road; thence northwesterly on Bluff Road to Ninth Street; thence north on Ninth Street to Cash

Street; thence west on Cash Street to Des Moines Avenue; thence north on Des Moines Avenue to the north corporation line.

Beginning again on the south corporation line on the extension of Des Moines Avenue (Station 134+99); thence north on the extension of Des Moines Avenue to the north corporation line (Station 140+59).