

OFFICIAL DESCRIPTION CHANGE

OFFICE: Transportation Data

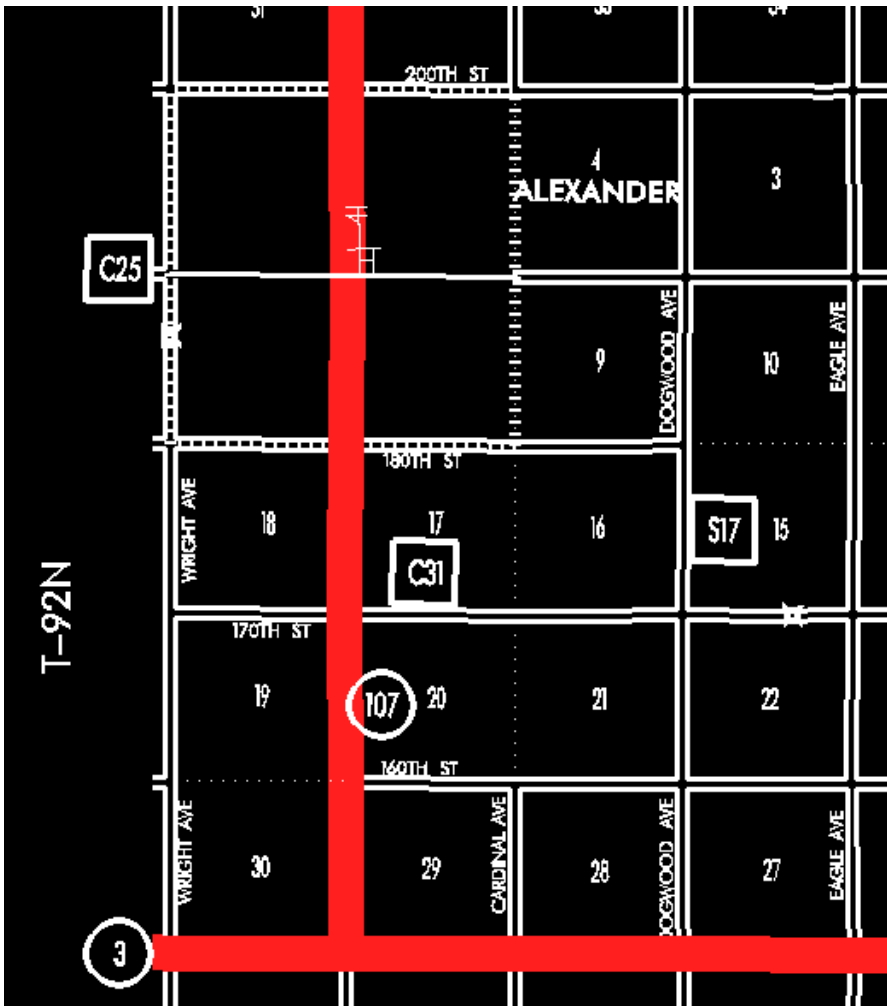
EFFECTIVE DATE: 07-01-2003

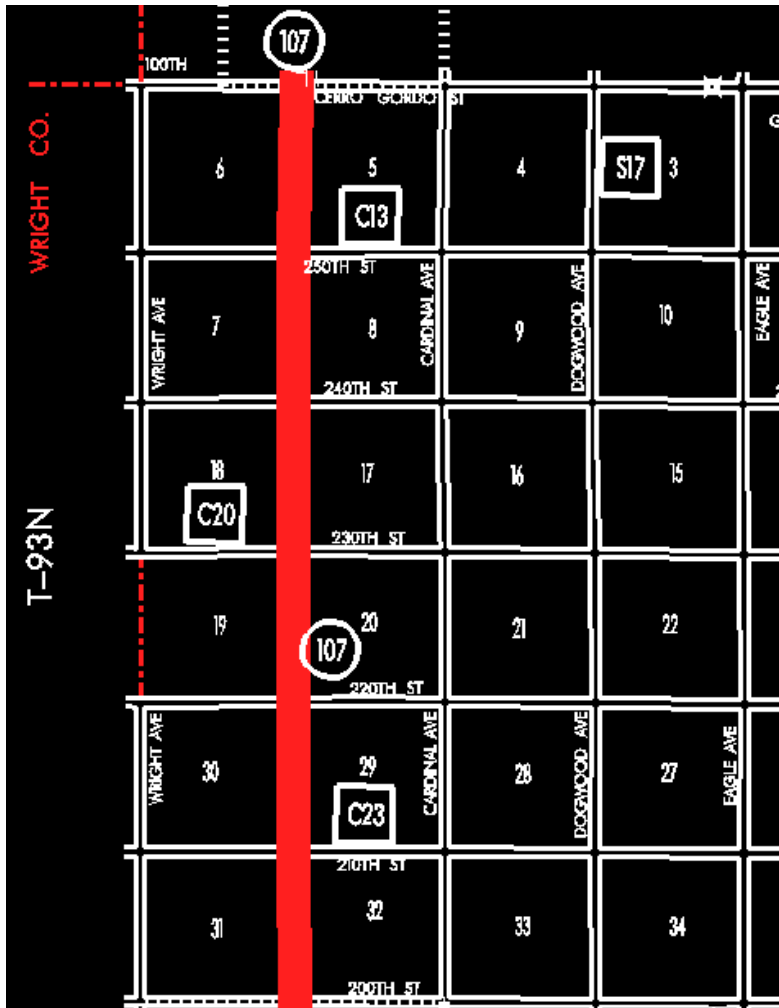
ENTERED BY: Stefani Wonders

ENTERED DATE: 08-28-2006

DISCUSSION/BACKGROUND:

Senate File 451 transferred Iowa 107 in its entirety, in Franklin County, to city and county jurisdiction on July 1, 2003.





COMMISSION ORDER

DIVISION: Planning & Research

COMMISSION ORDER NUMBER: PR-79-272

SUBMITTED BY: C.I. MacGillivray

MEETING DATE: 11-2-78

DISCUSSION/BACKGROUND:

Due to a review of our Primary Road System records, Iowa 107 in Franklin County, Iowa should be deleted and the new description should be officially included into the Primary Road System.

Iowa 107 begins at the junction of Iowa 3 approximately 3 miles south of Alexander and travels in a northerly direction via the City of Alexander to the Franklin–Cerro Gordo County line at Merservey, Iowa.

PROPOSAL/ACTION RECOMMENDATION:

Locate Iowa 107 and its extension in Franklin County as follows:

Beginning at the SW Corner Section 29–T92N–R22W/junction Iowa 3; thence north following substantially the section line of Sections 29, 20, and 17–T92N–R22W to the south corporation line of the City of Alexander connecting with an unnamed street.

Alexander:

Beginning at the south corporation line connecting with an unnamed street; thence north to the north corporation line connecting with an unnamed street.

Beginning again at the north corporation line of the City of Alexander connecting with an unnamed street; thence northerly following substantially the section line of Sections 32, 29, 20, 17, 8, and 5–T93N–R22W to the Franklin–Cerro Gordo County line at a point near the NW Corner Section 5–T93N–R22W, Franklin County (SW Corner Section 32–T94N–R22W, Cerro Gordo County) (south corporation line of the City of Meservey).

NOW, THEREFORE: Be it resolved that the Iowa Department of Transportation approve the location of Iowa 107 in Franklin County, Iowa.

NOTE: To become effective upon the adoption of this resolution.

OFFICIAL DESCRIPTION CHANGE

COUNTY: Franklin

ROUTE: Iowa 107

APPROVAL DATE: 1-24-40

Beginning at a point near the SE Corner Section 30-T92N-R22W; thence north following substantially the section line to the south corporation line of the Town of Alexander connecting with an unnamed street.

Alexander:

Beginning on unnamed street at the south corporation line; thence north on unnamed street to the north corporation line.

Beginning again on the north corporation line of the Town of Alexander connecting with an unnamed street; thence north following substantially the section line to the Franklin-Cerro Gordo County line at a point near the NE Corner Section 6-T93N-R22W, Franklin County (SE Corner Section 31-T94N-R22W, Cerro Gordo County).