

OFFICIAL DESCRIPTION CHANGE

OFFICE: Transportation Data

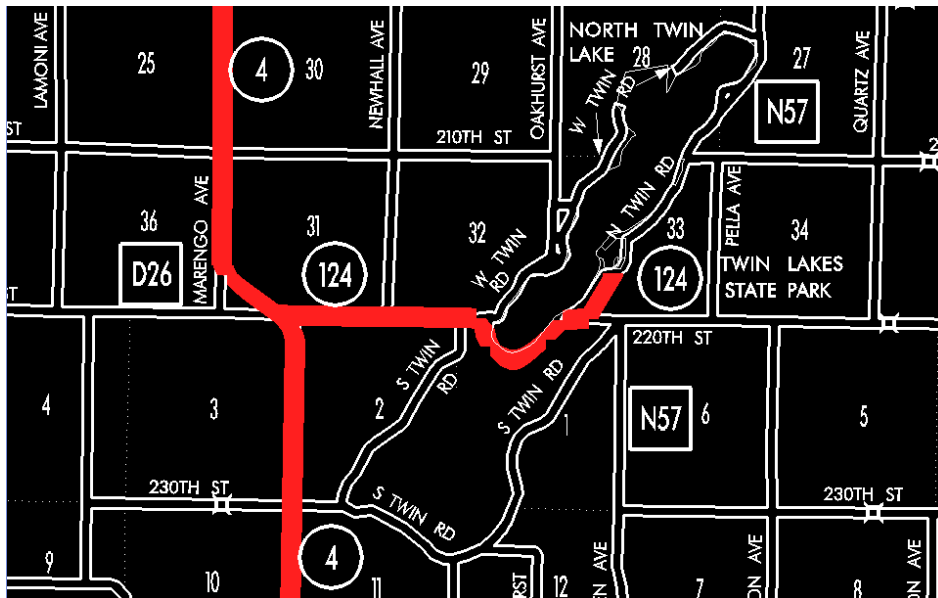
EFFECTIVE DATE: 07-01-2003

ENTERED BY: Stefani Wonders

ENTERED DATE: 08-28-2006

DISCUSSION/BACKGROUND:

Senate File 451 transferred Iowa 124 in its entirety, in Calhoun County, to county jurisdiction on July 1, 2003.



OFFICAL DESCRIPTION CHANGE

COUNTY: Calhoun

ROUTE: Iowa 124

STAFF ACTION NUMBER: S-87-693

APPROVAL DATE: 12-18-86

New description - Iowa 124 in Calhoun County described as follows:

Beginning at a point on Iowa 4 approximately 500 feet west of the NE Corner Section 3-T88N-R33W; thence easterly following substantially the section line through Sections 3, 2, and 1-T88N-R33W to a point approximately 475 feet east of the NW Corner of Section 1-T88N-R33W; thence southeasterly, northeasterly, and easterly through Section 1-T88N-R33W; thence northeasterly through Section 33-T89N-R32W to Twin Lakes State Park near the center of Section 33-T89N-R32W.

COMMISSION ORDER

DIVISION: Planning & Research

COMMISSION ORDER NUMBER: PR-79-272

SUBMITTED BY: C.I. MacGillivray

MEETING DATE: 11-2-78

DISCUSSION/BACKGROUND:

Due to the review of our Primary Road System records, Iowa 124 in Calhoun County should be deleted from the Primary System and the new description added should be officially included into the Primary Road System.

Iowa 124 begins at the junction of Iowa 4 approximately 1 mile west and 5 miles north of Rockwell City, Iowa and travels easterly terminating at Twin Lakes State Park approximately 4 ½ miles north of Rockwell City, Iowa.

PROPOSAL/ACTION RECOMMENDATION:

Locate Iowa 124 in Calhoun County as follows:

Beginning at a point on Iowa 4 approximately 500 feet west of the NE Corner Section 3-T88N-R33W; thence easterly following substantially the section line through Sections 3, 2, and 1-T88N-R33W to a point approximately 475 feet east of the NW Corner of Section 1-T88N-R33W;

thence southeasterly, northeasterly, and easterly through Section 1–T88N–R33W; thence northeasterly through Section 33–T89N–R32W to Twin Lakes State Park near the center of Section 33–T89N–R32W.

NOW, THEREFORE: Be it resolved that the Iowa Department of Transportation approve the location of Iowa 124 in Calhoun County, Iowa.

NOTE: To become effective upon adoption of this resolution.

REVISED: 12–18–86

COMMISSION ORDER

DIVISION: Planning & Research

SUBMITTED BY: Raymond L. Kassel

MEETING DATE: 8–24–76

DISCUSSION/BACKGROUND:

Due to the review of our Primary Road System records, Iowa 124 in Calhoun County should be deleted from the Primary System and the new description added should be officially included into the Primary Road System.

Iowa 124 begins at the junction of Iowa 4 approximately 1 mile west and 5 miles north of Rockwell City, Iowa and travels easterly terminating at Twin Lakes State Park approximately 4 ½ miles north of Rockwell City, Iowa.

PROPOSAL/ACTION RECOMMENDATION:

Locate Iowa 124 in Calhoun County as follows:

Beginning at a point on Iowa 4 approximately 500 feet west of the NE Corner Section 3–T88N–R33W; thence easterly following substantially the

section line through Sections 3, 2, and 1-T88N-R33W to a point approximately 475 feet east of the NW Corner of Section 1-T88N-R33W; thence southeasterly, northeasterly, and easterly through Section 1-T88N-R33N; thence northeasterly through Section 33-T89N-R32W to Twin Lake State Park near the center of Section 33-T89N-R32W.

NOW, THEREFORE: Be it resolved that the Iowa Department of Transportation approve the location of Iowa 124 in Calhoun County, Iowa.

NOTE: To become effective upon adoption of this resolution.

OFFICAL DESCRIPTION CHANGE

COUNTY: Calhoun

ROUTE: Iowa 124

APPROVAL DATE: 12-27-46

Beginning at a point on Iowa 4 near the NE Corner Section 3-T88N-R33W; thence easterly following substantially the section line to a point a short distance east of the NW Corner Section 1-T88N-R33W; thence in a southeasterly, easterly and northeasterly direction through the N ½ of Section 1-T88N-R33W and northeasterly in Section 33-T89N-R32W to Twin Lakes State Park near the center of said Section 33.

OFFICAL DESCRIPTION CHANGE

COUNTY: Calhoun

ROUTE: Iowa 124

APPROVAL DATE: 12-27-46

Beginning at a point on Primary Road No. 17 near the NW Cor. Sec. 3-T88-R33; thence easterly following substantially the section line to a point a

short distance east of the NW Cor. Sec. 1-T88-R33; thence in a southeasterly, easterly and northeasterly direction through the N $\frac{1}{2}$ of Sec. 1-T88-R33 and northeasterly in Sec. 33-T89-R32 to Twin Lakes State Park near the center of said Sec. 33.

OFFICAL DESCRIPTION CHANGE

COUNTY: Calhoun

ROUTE: Iowa 124

APPROVAL DATE: 12-27-46

Beginning at a point near the NW Cor. of Sec. 2-T88-R33, thence east following substantially the section line to a point near the N $\frac{1}{4}$ Cor. of Sec. 1-T88-R33, thence in a southeasterly, easterly and northeasterly direction through the NE $\frac{1}{4}$, Sec. 1-T88-R33, and northeasterly through Sec. 33-T89-R32, to Twin Lakes State Park.