

**OFFICIAL DESCRIPTION CHANGE**

**OFFICE:** Transportation Data

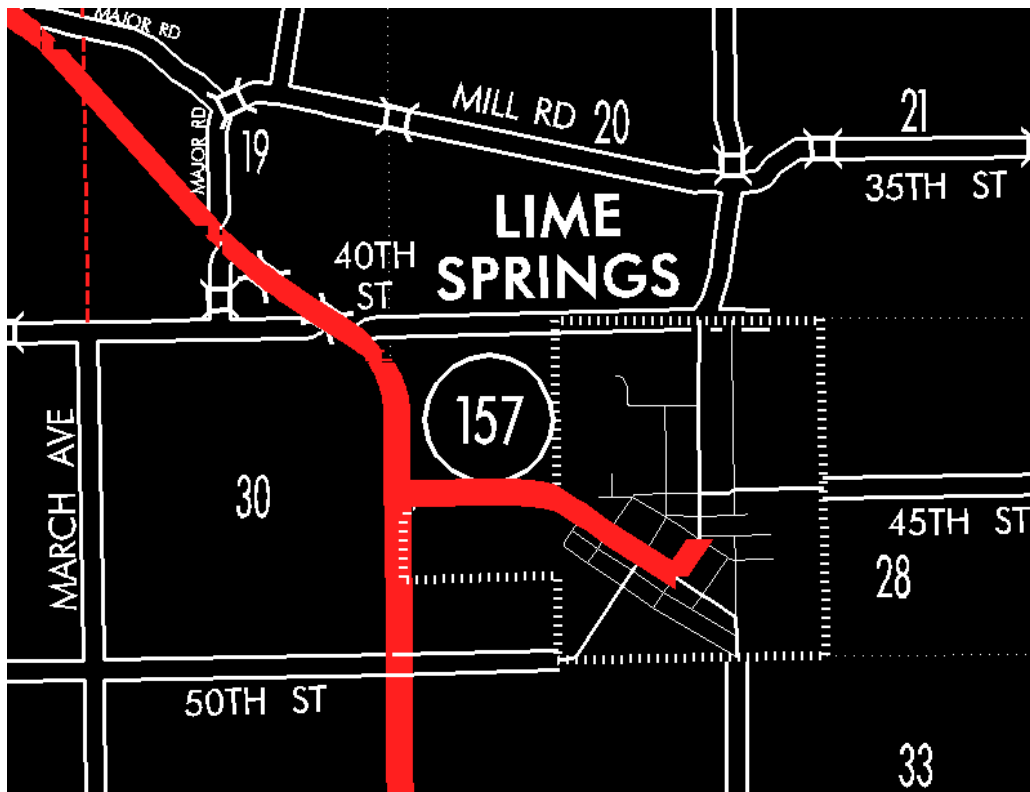
**EFFECTIVE DATE:** 07-01-2003

**ENTERED BY:** Stefani Wonders

**ENTERED DATE:** 08-31-2006

**DISCUSSION/BACKGROUND:**

Senate File 451 transferred Iowa 157 in its entirety, in Howard County, to city and county jurisdiction on July 1, 2003.



**OFFICIAL DESCRIPTION CHANGE**

**COUNTY:** Howard

**ROUTE:** Iowa 157

**STAFF ACTION NUMBER:** S-97-464

**APPROVAL DATE:** 10-16-96

**DISCUSSION/BACKGROUND:**

According to project agreement number 72-6-076 made on April 28, 1972, the official description in the Primary Road System should be revised to reflect the change of Iowa 157.

**PROPOSAL/ACTION RECOMMENDATION:**

It is recommended that the old description of Iowa 157 in Howard County be deleted from the Primary Road System and the new description, as described in the attachment, be included in the Primary Road System.

New Description – Iowa 157 and its extension in Howard County described as follows:

Beginning at a point near the W  $\frac{1}{4}$  Corner Section 29-T100N-R12W (junction of US 63); thence easterly following substantially the center section line of Section 29-T100N-R12W to the west corporation line of Lime Springs connecting with Merrill Street.

Lime Springs:

Beginning on Merrill Street at the west corporation line; thence southeast on Merrill Street 2,078 feet to Center Street; thence northeast on Center Street to Main Street.

**OFFICIAL DESCRIPTION CHANGE**

**COUNTY:** Howard

**ROUTE:** Iowa 157

**STAFF ACTION NUMBER:** S-87-729

**APPROVAL DATE:** 12-18-86

New Description – Iowa 157 and its extension in Howard County described as follows:

Beginning at a point near the W ¼ Corner Section 29-T100N-R12W (junction of US 63); thence easterly following substantially the center section line of Section 29-T100N-R12W to the west corporation line of Lime Springs connecting with Merrill Street.

Lime Springs:

Beginning on Merrill Street at the west corporation line; thence southeast on Merrill Street 2,078 feet to Center Street; thence northeast on Center Street to Main Street; thence northwest on Main Street 365 feet.

**COMMISSION ORDER**

**DIVISION:** Planning & Research

**COMMISSION ORDER NUMBER:** PR-79-272

**SUBMITTED BY:** C.I. MacGillivray

**MEETING DATE:** 11-2-78

**DISCUSSION/BACKGROUND:**

Due to a review of our Primary Road System records, Iowa 157 in Howard County should be deleted and the new description added should be officially included into the Primary Road System.

Iowa 157 begins at the junction of US 63, approximately ½ mile west of Lime Springs, Iowa and travels easterly terminating in the City of Lime Springs, Iowa.

**PROPOSAL/ACTION RECOMMENDATION:**

Locate Iowa 157 and its extension in Howard County as follows:

Beginning at a point near the W ¼ Corner Section 29-T100N-R12W (junction of US 63); thence easterly following substantially the center section line of Section 29-T100N-R12W to the west corporation line of the City of Lime Springs connecting with an unnamed street.

Lime Springs:

Beginning on the west corporation line connecting with an unnamed street; thence southeasterly and northwesterly to a point on Main Street approximately 365 feet northwest of Center Street.

NOW, THEREFORE: Be it resolved that the Iowa Department of Transportation approve the location of Iowa 157 in Howard County, Iowa.

NOTE: To become effective upon adoption of this resolution.

REVISED: 12-18-86

**OFFICIAL DESCRIPTION CHANGE**

**COUNTY:** Howard

**CITY OF:** Lime Springs

**ROUTE:** Iowa 157

**APPROVAL DATE:** 12-2-41

Commencing at the west corporation line; thence southeast on Merrill Street 2,078 feet to Center Street; thence northeasterly on Center Street to Main Street; thence northwesterly on Main Street 365 feet.

**OFFICIAL DESCRIPTION CHANGE**

**COUNTY:** Howard

**ROUTE:** Iowa 157

**APPROVAL DATE:** 4-14-37

Beginning at a point approximately 600 feet south of the W  $\frac{1}{4}$  Corner of Section 29-T100N-R12W; thence curving in a northeasterly direction to a point approximately 600 feet east of the W  $\frac{1}{4}$  Corner of Section 29-T100N-R12W; thence east to the west corporation line of the Town of Lime Springs connecting with Merrill Street.

**REVISED:** 11-2-78