

OFFICIAL DESCRIPTION CHANGE

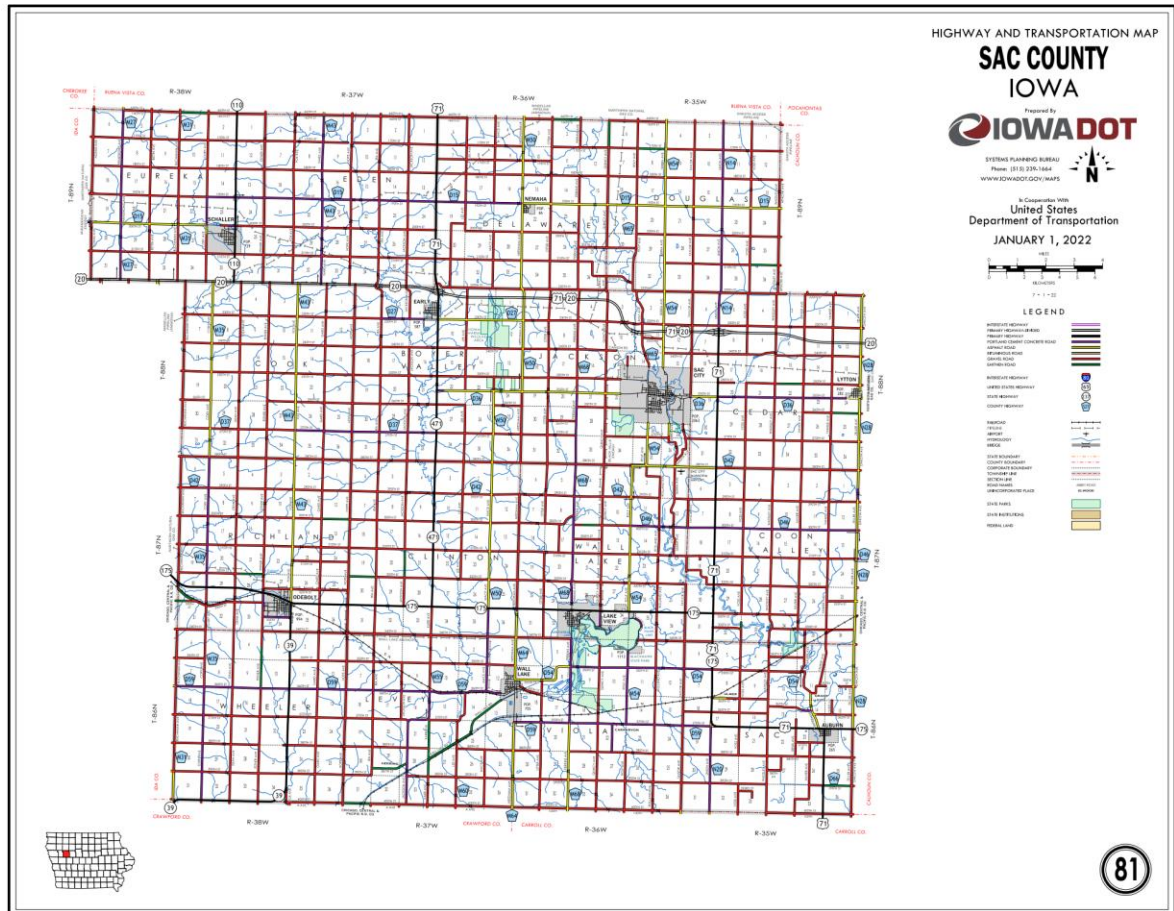
COUNTY: Sac

ROUTE: Iowa 175

ENTERED DATE: 12-9-22

ENTERED BY: Paul Mauer

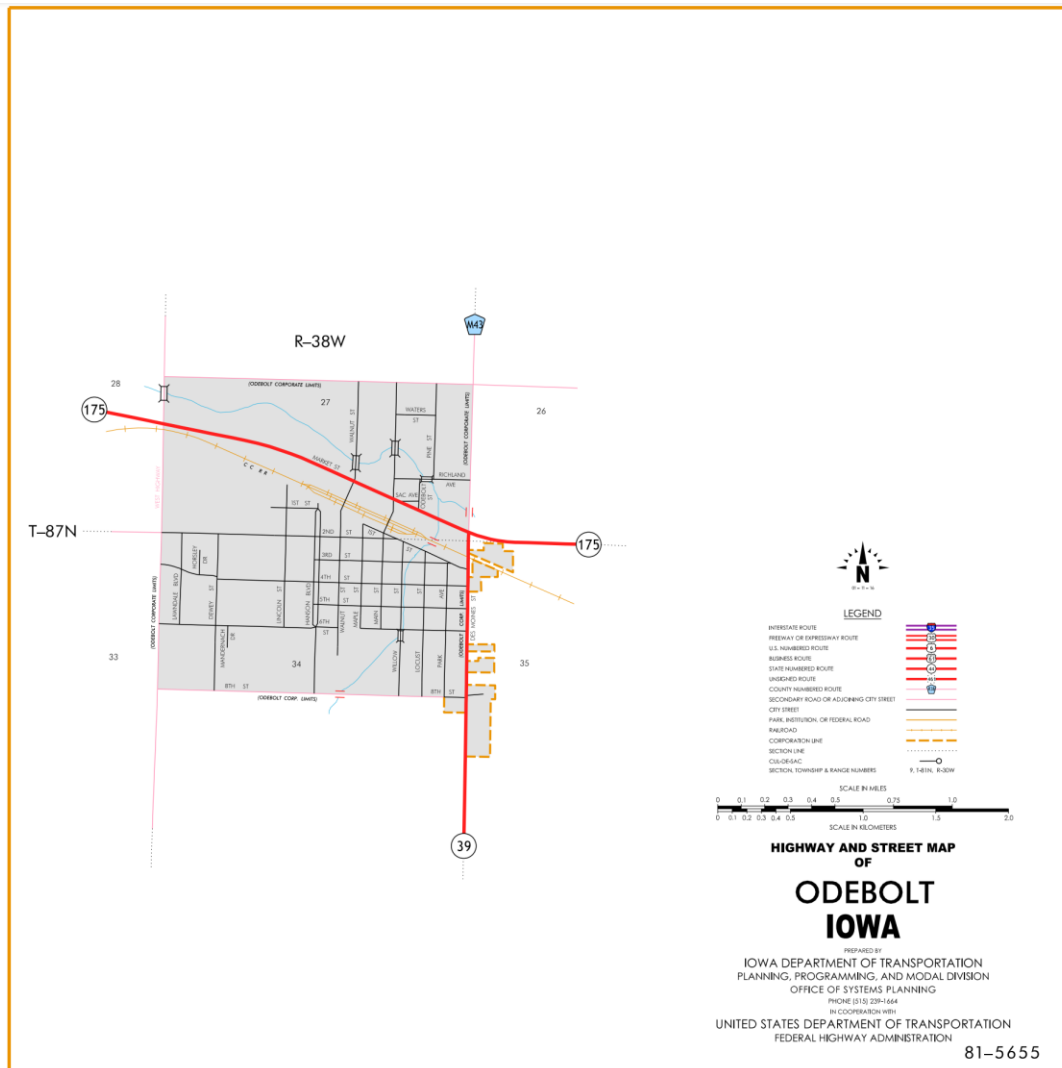
EFFECTIVE DATE: 4-12-2022



New Description – Iowa 175 and its extensions in Sac County described as follows:

Beginning on the Sac-Ida County line at a point approximately 800 feet north of the W ¼ Corner Section 30-T87N-R38W, Sac County (E ¼ Corner Section 25-T89N-R39W, Ida County); thence curving southeasterly through Section 30-T87N-R38W to a point approximately 300 feet west of the center of Section 30-T87N-R38W; thence easterly following

substantially the center section line of Sections 30, 29 and 28-T87N-R38W to a point approximately 200 feet east of the W ¼ Corner Section 28-T87N-R38W; thence southeasterly through said Section 28 to the west corporation line of Odebolt, connecting with Market Street.

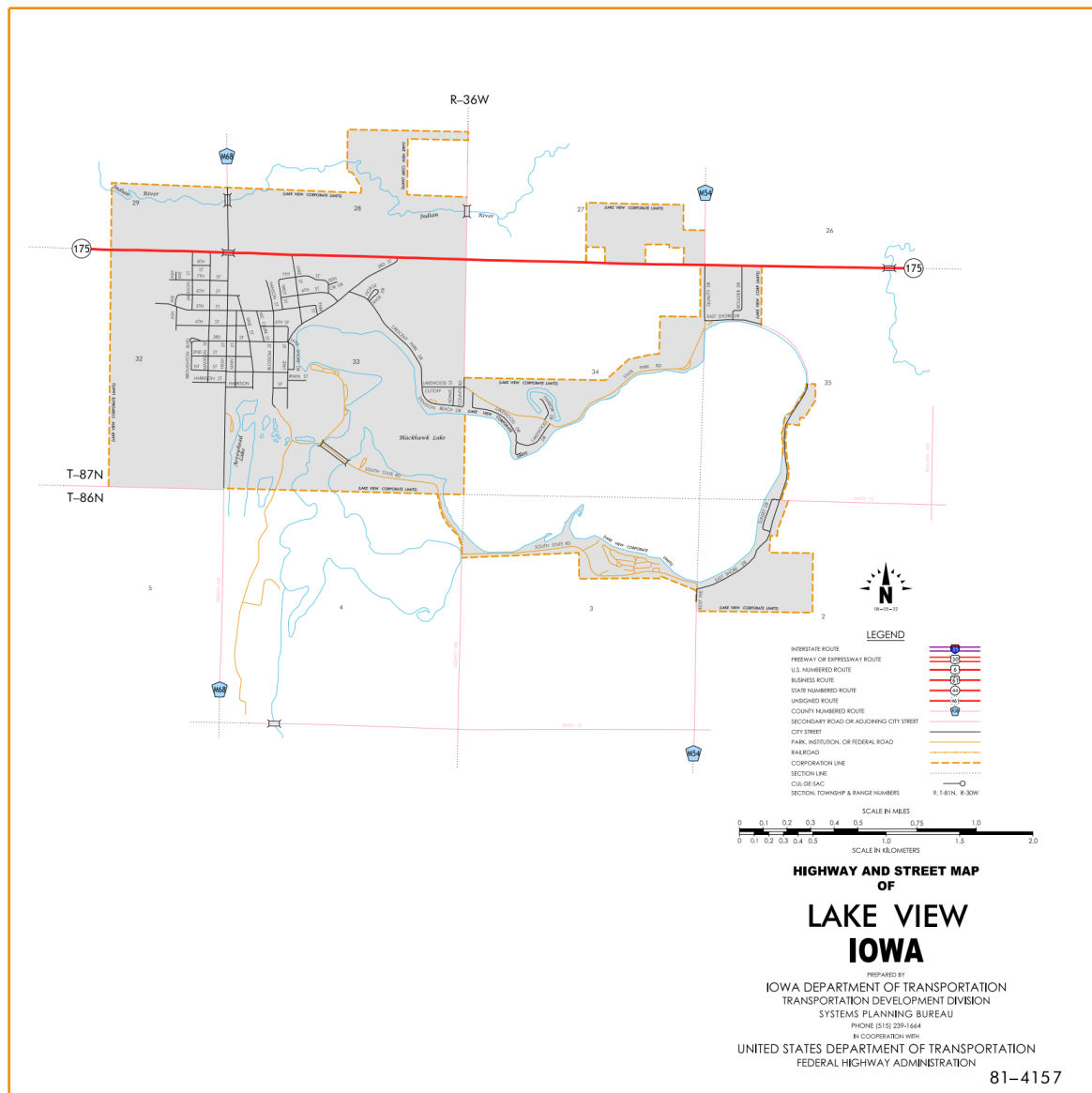


Odebolt:

Beginning on Market Street at the west corporation line; thence southeasterly on Market Street to the east corporation line.

Beginning again on the east corporation line of Odebolt connecting with Market Street; thence curving southeasterly through the SW ¼ of

Section 26-T87N-R38W (junction Iowa 39) to a point approximately 800 feet east of the NW Corner Section 35-T87N-R38W; thence east following substantially the section line of Sections 35 and 36-T87N-R38W, Sections 31, 32, 33 (west junction US 71), 34, 35 and 36-T87N-R37W and Sections 31 and 32-T87N-R36W to the west corporation line of Lake View, connecting with an unnamed street.



Lake View:

Beginning on an unnamed street at the west corporation line; thence east on said unnamed street to the east corporation line.

Beginning again on the east corporation line of Lake View connecting with an unnamed street; thence east following substantially the section line of Section 34-T87N-R36W to the west corporation line of Lake View, connecting with an unnamed street.

Lake View:

Beginning on an unnamed street at the west corporation line; thence east on said unnamed street to the east corporation line.

Beginning again on the east corporation line of Lake View connecting with an unnamed street; thence east following substantially the section line of Sections 35 and 36-T87N-R36W and Section 31-T87N-R35W to a point approximately 1,200 feet west of the NE Corner Section 31-T87N-R35W; thence curving southeasterly through Section 31-T87N-R35W to a point approximately 1,150 feet south of the NE Corner said Section 31; thence south following substantially the section line of Section 32-T87N-R35W and Sections 5, 8 and 17-T86N-R35W to a point approximately 1,200 feet north of the SW Corner Section 17-T86N-R35W; thence curving southeasterly through Section 17-T86N-R35W to a point approximately 1,200 feet east of the NW Corner Section 20-T86N-R35W; thence easterly following substantially the section line of Sections 20, 21, 22, 23 (east junction US 71) and 24-T86N-R35W to the Sac-Calhoun County line at a point near the SE Corner Section 13-T86N-R35W, Sac County (SW Corner Section 18-T86N-R34W, Calhoun County).

OFFICIAL DESCRIPTION CHANGE

OFFICE: Research and Analytics

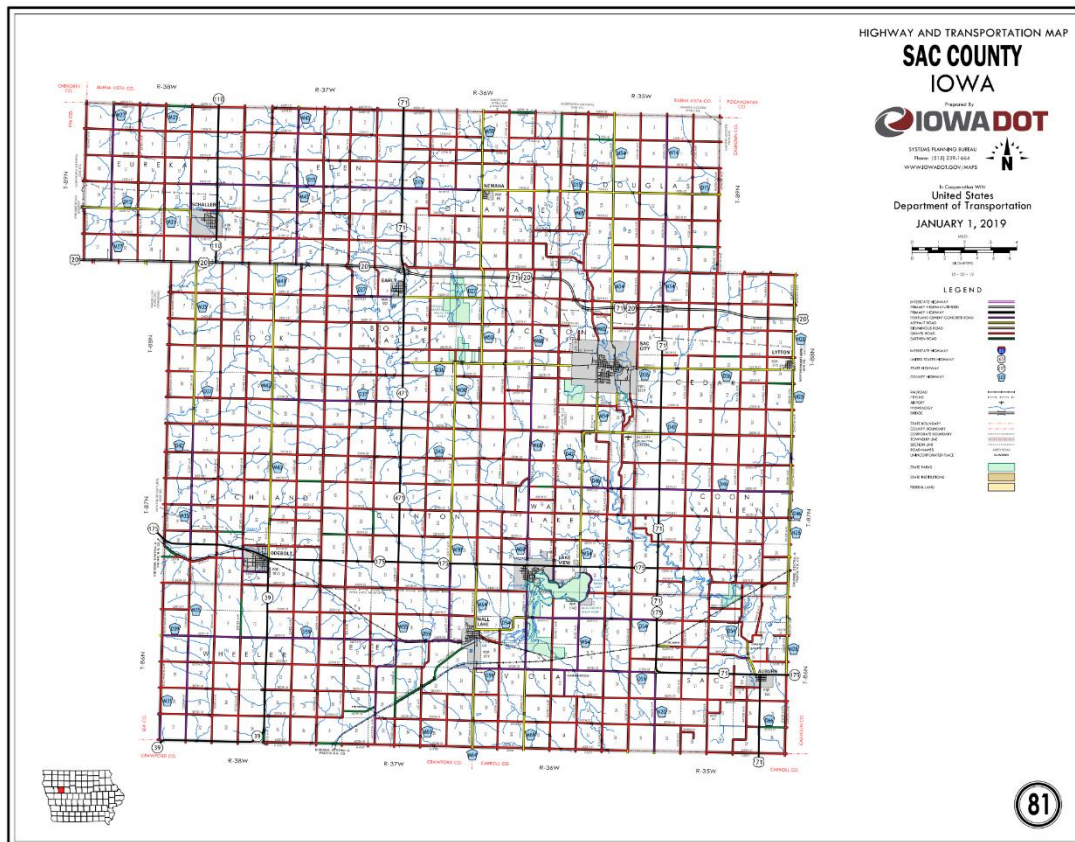
EFFECTIVE DATE: 12-7-2020

COUNTY: Sac

ROUTE: Iowa 175

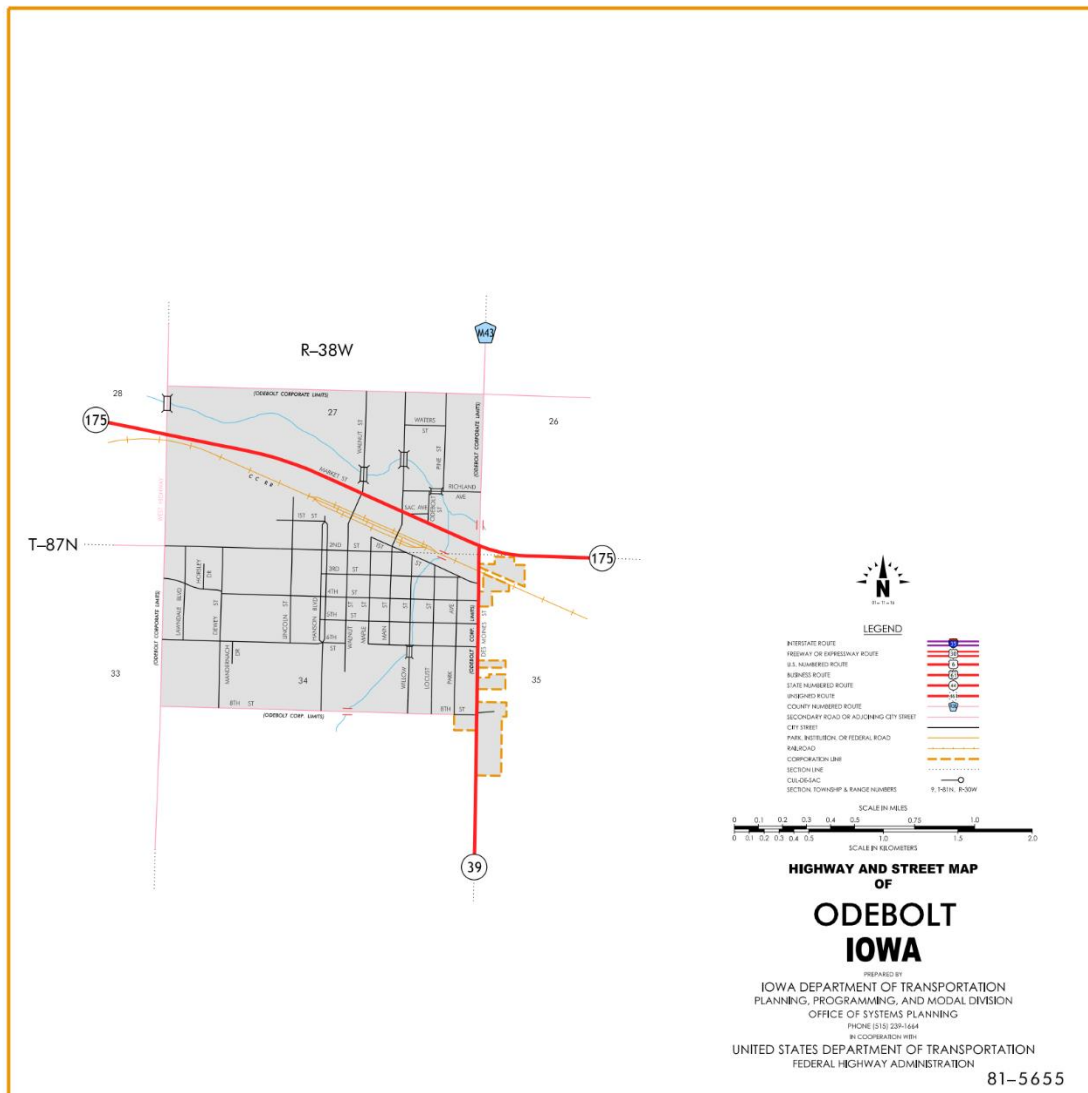
ENTERED BY: Paul Mauer

ENTERED DATE: 2-3-2022



New Description – Iowa 175 and its extensions in Sac County described as follows:

Beginning on the Sac-Ida County line at a point approximately 800 feet north of the W ¼ Corner Section 30-T87N-R38W, Sac County (E ¼ Corner Section 25-T89N-R39W, Ida County); thence curving southeasterly through Section 30-T87N-R38W to a point approximately 300 feet west of the center of Section 30-T87N-R38W; thence easterly following substantially the center section line of Sections 30, 29 and 28-T87N-R38W to a point approximately 200 feet east of the W ¼ Corner Section 28-T87N-R38W; thence southeasterly through said Section 28 to the west corporation line of Odebolt, connecting with Market Street.

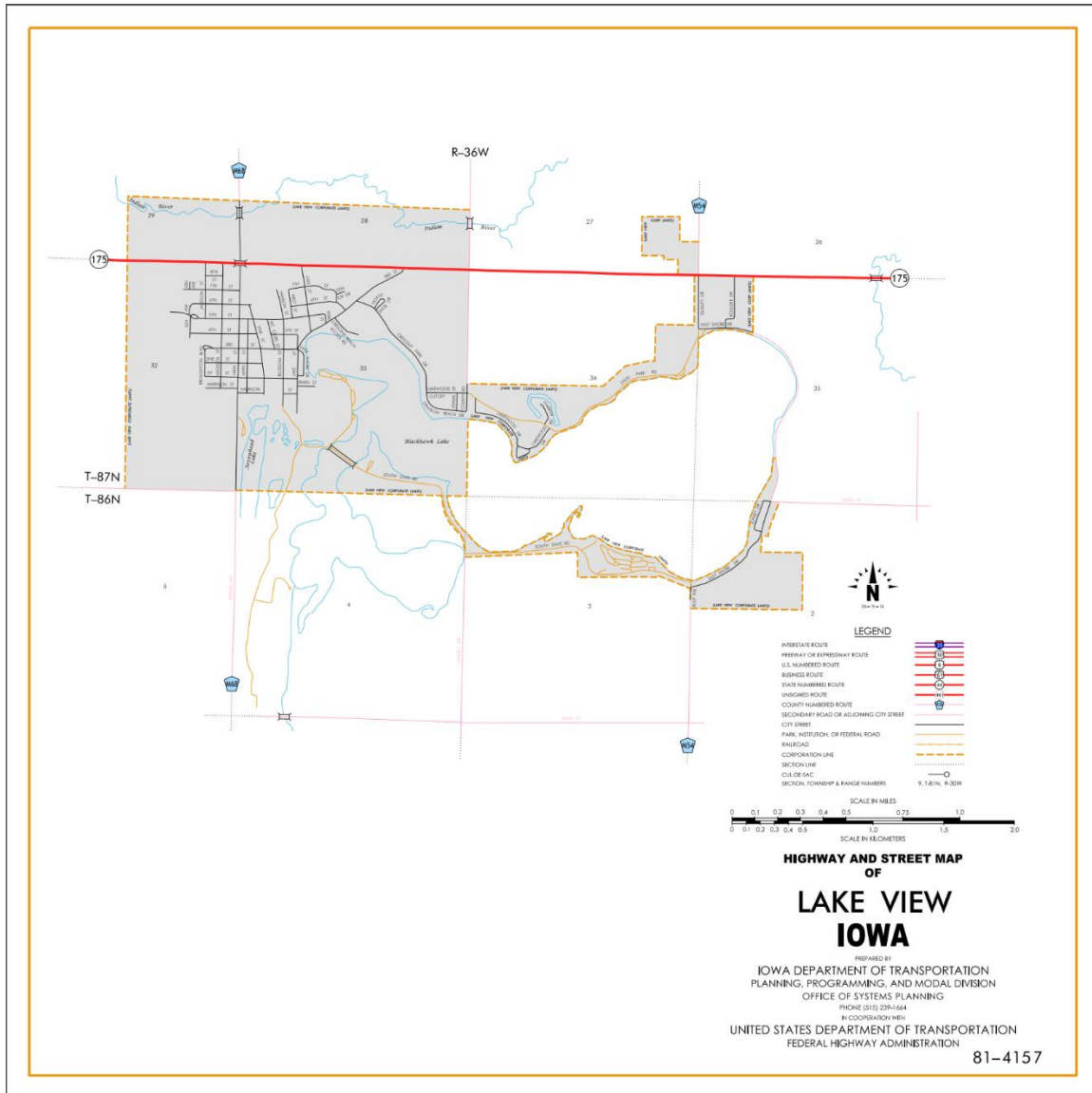


Odebolt:

Beginning on Market Street at the west corporation line; thence southeasterly on Market Street to the east corporation line.

Beginning again on the east corporation line of Odebolt connecting with Market Street; thence curving southeasterly through the SW $\frac{1}{4}$ of Section 26-T87N-R38W (junction Iowa 39) to a point approximately 800 feet east of the NW Corner Section 35-T87N-R38W; thence east following substantially the section line of Sections 35 and 36-T87N-R38W, Sections

31, 32, 33 (junction Iowa 471), 34, 35 and 36-T87N-R37W and Sections 31 and 32-T87N-R36W to the west corporation line of Lake View, connecting with 330th Street.



Lake View:

Beginning on 330th Street at the west corporation line; thence east on 330th Street to the east corporation line.

Beginning again on the east corporation line of Lake View connecting with 330th Street; thence east following substantially the section line of

Sections 34–T87N–R36W to the west corporation line of Lake View connecting with 330th Street.

Lake View:

Beginning at the west corporation line of Lake View connecting with 330th Street; then east on 330th Street to the east corporation line.

Beginning again on the east corporation line of Lake View connecting with 330th Street; thence east following substantially the section line of Sections 34–T87N–R36W to the west corporation line of Lake View connecting with 330th Street.

Lake View:

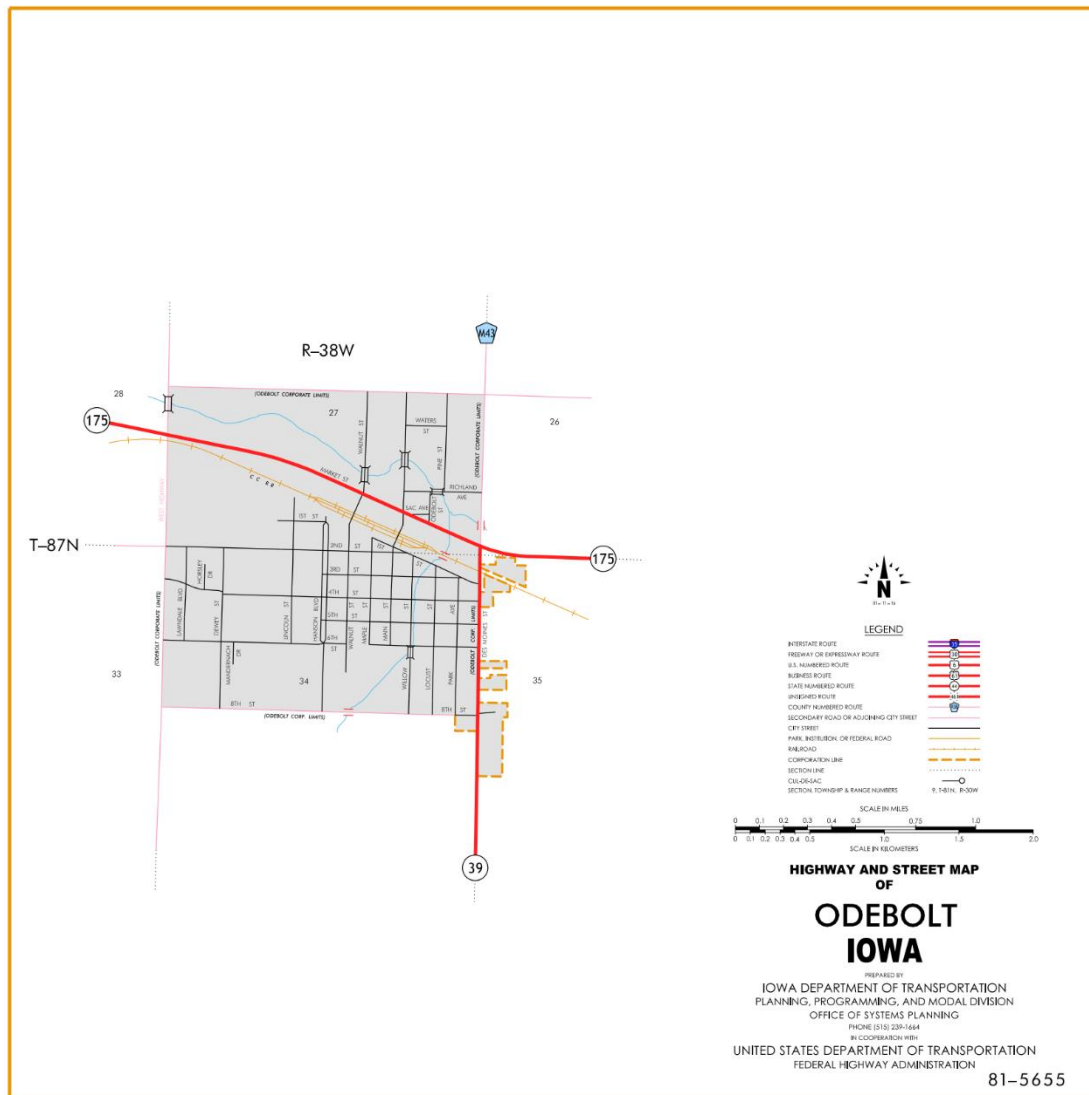
Beginning at the west corporation line of Lake View connecting with 330th Street; then east on 330th Street to the east corporation line.

Beginning again at the east corporation line of Lake View connecting with 330th Street; thence east through Sections 35 and 36–T87N–R36W and Section 31–T87N–R35W to the NE Corner Section 31–T87N–R35W (west junction US 71); thence south following substantially the section line of Section 31 and 32–T87N–R35W, and Sections 5, 8 and 17–T86N–R35W to a point approximately 1,200 feet north of the SW Corner Section 17–T86N–R35W; thence curving southeasterly through Section 17–T86N–R35W to a point approximately 1,200 feet east of the NW Corner Section 20–T86N–R35W; thence easterly following substantially the section line of Sections 20, 21, 22, 23 (east junction US 71) and 24–T86N–R35W to the Sac–Calhoun County line at a point near the SE Corner Section 13–T86N–R35W, Sac County (SW Corner Section 18–T86N–R34W, Calhoun County).

ENTERED DATE: 1-31-2020

Beginning on the Sac-Ida County line at a point approximately 800 feet north of the W ¼ Corner Section 30-T87N-R38W, Sac County (E ¼ Corner Section 25-T89N-R39W, Ida County); thence curving southeasterly through Section 30-T87N-R38W to a point approximately 300 feet west of the center of Section 30-T87N-R38W; thence easterly following

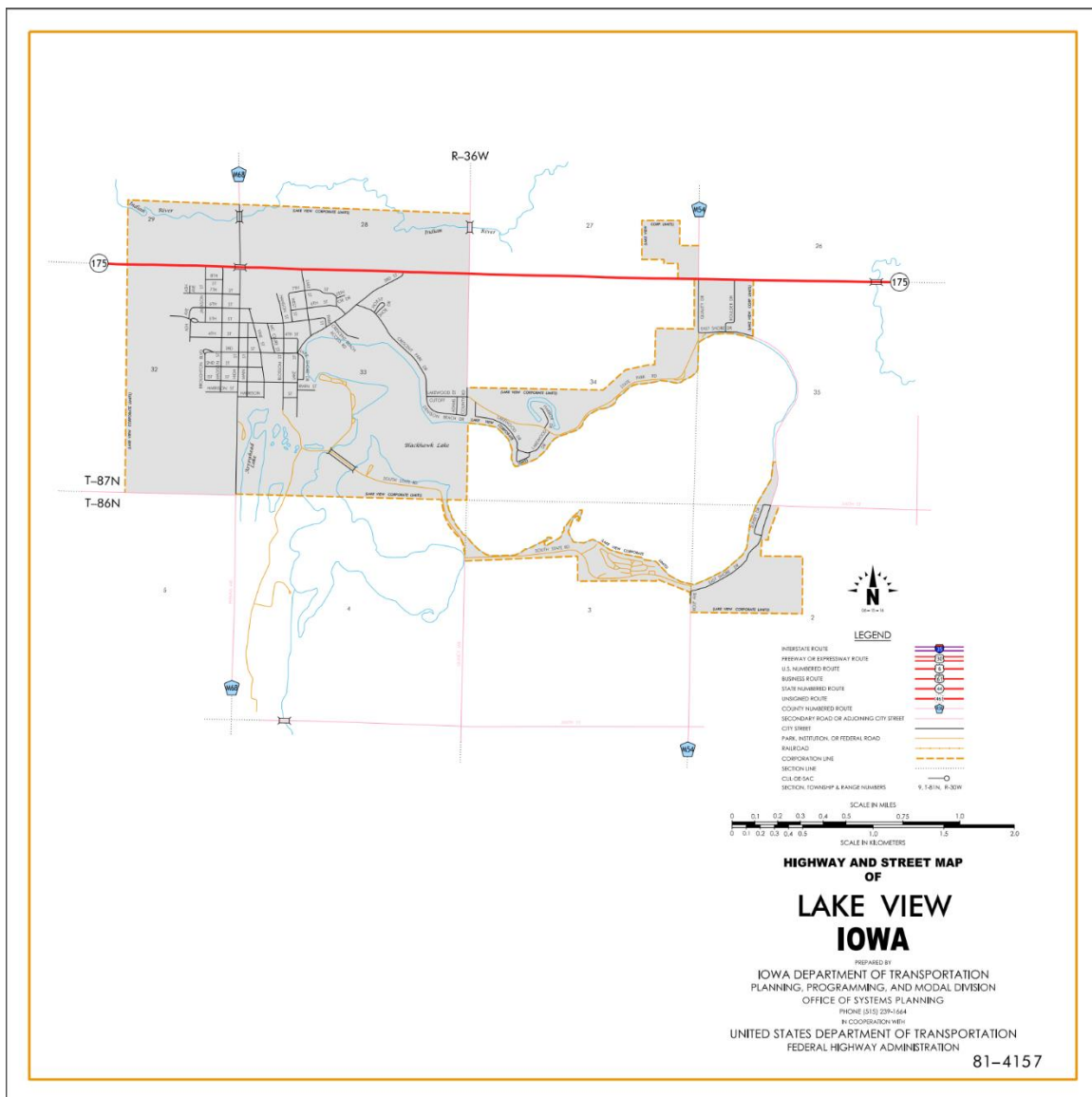
substantially the center section line of Sections 30, 29 and 28-T87N-R38W to a point approximately 200 feet east of the W ¼ Corner Section 28-T87N-R38W; thence southeasterly through said Section 28 to the west corporation line of Odebolt, connecting with Market Street.



Odebolt:

Beginning on Market Street at the west corporation line; thence southeasterly on Market Street to the east corporation line.

Beginning again on the east corporation line of Odebolt connecting with Market Street; thence curving southeasterly through the SW ¼ of Section 26-T87N-R38W (junction Iowa 39) to a point approximately 800 feet east of the NW Corner Section 35-T87N-R38W; thence east following substantially the section line of Sections 35 and 36-T87N-R38W, Sections 31, 32, 33 (junction Iowa 471), 34, 35 and 36-T87N-R37W and Sections 31 and 32-T87N-R36W to the west corporation line of Lake View, connecting with 330th Street.



Lake View:

Beginning on 330TH Street at the west corporation line; thence east on 330th Street to the east corporation line.

Beginning again on the east corporation line of Lake View connecting with 330th Street; thence east following substantially the section line of Sections 34-T87N-R36W to the west corporation line of Lake View connecting with 330th Street.

Lake View:

Beginning at the west corporation line of Lake View connecting with 330th Street; then east on 330th Street to the east corporation line.

Beginning again at the east corporation line of Lake View connecting with 330th Street; thence east through Sections 35 and 36-T87N-R36W and Section 31-T87N-R35W to the NE Corner Section 31-T87N-R35W (west junction US 71); thence south following substantially the section line of Section 31 and 32-T87N-R35W, and Sections 5, 8 and 17-T86N-R35W to a point approximately 1,200 feet north of the SW Corner Section 17-T86N-R35W; thence curving southeasterly through Section 17-T86N-R35W to a point approximately 1,200 feet east of the NW Corner Section 20-T86N-R35W; thence easterly following substantially the section line of Sections 20, 21, 22, 23 (east junction US 71) and 24-T86N-R35W to the Sac-Calhoun County line at a point near the SE Corner Section 13-T86N-R35W, Sac County (SW Corner Section 18-T86N-R34W, Calhoun County).

OFFICIAL DESCRIPTION CHANGE

COUNTY: Sac

ROUTE: Iowa 175

STAFF ACTION NUMBER: S-87-1514

APPROVAL DATE: 5-13-87

New Description – Iowa 175 and its extensions in Sac County described as follows:

Beginning on the Sac-Ida County line at a point approximately 800 feet north of the W $\frac{1}{4}$ Corner Section 30-T87N-R38W, Sac County (E $\frac{1}{4}$ Corner Section 25-T89N-R39W, Ida County); thence curving southeasterly through Section 30-T87N-R38W to a point approximately 300 feet west of the center of Section 30-T87N-R38W; thence easterly following substantially the center section line of Sections 30, 29 and 28-T87N-R38W to a point approximately 200 feet east of the W $\frac{1}{4}$ Corner Section 28-T87N-R38W; thence southeasterly through said Section 28 to the west corporation line of Odebolt, connecting with Market Street.

Odebolt:

Beginning on Market Street at the west corporation line; thence southeasterly on Market Street to the east corporation line.

Beginning again on the east corporation line of Odebolt connecting with Market Street; thence curving southeasterly through the SW $\frac{1}{4}$ of Section 26-T87N-R38W (junction Iowa 39) to a point approximately 800 feet east of the NW Corner Section 35-T87N-R38W; thence east following substantially the section line of Sections 35 and 36-T87N-R38W, Sections 31, 32, 33 (west junction US 71), 34, 35 and 36-T87N-R37W and Sections 31 and 32-T87N-R36W to the west corporation line of Lake View, connecting with an unnamed street.

Lake View:

Beginning on an unnamed street at the west corporation line; thence east on said unnamed street to the east corporation line.

Beginning again on the east corporation line of Lake View connecting with an unnamed street; thence east following substantially the section line of Sections 34, 35 and 36-T87N-R36W and Section 31-T87N-R35W to a point approximately 1,200 feet west of the NE Corner Section

31-T87N-R35W; thence curving southeasterly through Section 31-T87N-R35W to a point approximately 1,150 feet south of the NE Corner said Section 31; thence south following substantially the section line of Section 32-T87N-R35W and Sections 5, 8 and 17-T86N-R35W to a point approximately 1,200 feet north of the SW Corner Section 17-T86N-R35W; thence curving southeasterly through Section 17-T86N-R35W to a point approximately 1,200 feet east of the NW Corner Section 20-T86N-R35W; thence easterly following substantially the section line of Sections 20, 21, 22, 23 (east junction US 71) and 24-T86N-R35W to the Sac-Calhoun County line at a point near the SE Corner Section 13-T86N-R35W, Sac County (SW Corner Section 18-T86N-R34W, Calhoun County).

COMMISSION ORDER

DIVISION: Planning & Research

COMMISSION ORDER NUMBER: PR-79-272

SUBMITTED BY: C.I. MacGillivray

MEETING DATE: 11-2-78

TITLE: Iowa 175, Sac County, Iowa

DISCUSSION/BACKGROUND:

Iowa 175 begins on the Sac-Ida County line approximately 3 miles west of Odebolt, and travels generally easterly, southerly and easterly via Odebolt and Lake View to the Sac-Calhoun County line approximately 1 mile east of Auburn.

Due to a review of our Primary Road System Records Iowa 175 in Sac County should be deleted and the new description added should be officially included into the Primary System.

PROPOSAL/ACTION RECOMMENDATION:

it is recommended that the old description of Iowa 175 in Sac County be deleted and the new description, as referred in the attached detailed description, be included in the Primary Route System upon the adoption of this resolution.

Locate Iowa 175 and its extensions in Sac County as follows:

Beginning on the Sac-Ida County line at a point approximately 800 feet north of the W $\frac{1}{4}$ Corner Section 30-T87N-R38W, Sac County (E $\frac{1}{4}$ Corner Section 25-T89N-R39W, Ida County); thence curving southeasterly through Section 30-T87N-R38W to a point approximately 300 feet west of the center of Section 30-T87N-R38W; thence easterly following substantially the center section line of Sections 30, 29, and 28-T87N--R38W to a point approximately 200 feet east of the W $\frac{1}{4}$ Corner Section 28-T87N-R38W; thence southeasterly through said Section 28 to the west corporation line of the City of Odebolt connecting with an unnamed street.

Odebolt:

Beginning on the west corporation line connecting with an unnamed street; thence in a southeasterly direction to the east corporation line connecting with an unnamed street.

Beginning on the east corporation line of the City of Odebolt connecting with an unnamed street; thence curving southeasterly through the SW $\frac{1}{4}$ of Section 26-T87N-R38W (junction Iowa 39) to a point approximately 800 feet east of the NW Corner Section 35-T87N-R38W; thence east following substantially the section line of Sections 35 and 36-T87N-R38W, Sections 31, 32, 33 (west junction US 71), 34, 35, and 36-T87N-R37W and Sections 31 and 32-T87N-R36W to the west corporation line of the City of Lake View connecting with an unnamed street.

Lake View:

Beginning on the west corporation line connecting with an unnamed street; thence easterly to the east corporation line connecting with an unnamed street.

Beginning again on the east corporation line of the City of Lake View connecting with an unnamed street; thence easterly following substantially the section line of Sections 34, 35, and 36-T87N-R36W and Section 31-T87N-R35W to a point approximately 1200 feet west of the NE Corner Section 31-T87N-R35W; thence curving southeasterly through Section 31-T87N-R35W to a point approximately 1150 feet south of the NE Corner said Section 31; thence southerly following substantially the section line of Section 32-T87N-R35W and Sections 5, 8, and 17-T86N-R35W to a point approximately 1200 feet north of the SW Corner Section 17-T86N-R35W; thence curving southeasterly through Section 17-T86N-R35W to a point approximately 1200 feet east of the NW Corner Section 20-T86N-R35W; thence easterly following substantially the section line of Sections 20, 21, 22, 23 (east junction US 71) and 24-T86N-R35W to the Sac-Calhoun County line at a point near the SE Corner Section 13-T86N-R35W, Sac County (SW Corner Section 18-T86N-R34W, Calhoun County).

REVISED: 5-13-87

OFFICIAL DESCRIPTION CHANGE

COUNTY: Sac

ROUTE: Iowa 175

APPROVAL DATE: 10-28-47

Beginning on the Sac-Ida County line at a point approximately 800 feet north of the W $\frac{1}{4}$ Corner Section 30-T87N-R38W, Sac County (E $\frac{1}{4}$ Corner Section 25-T89N-R39W, Ida County); thence curving southeasterly to a point approximately 300 feet west of the center of Section 30-T87N-R38W; thence east following substantially the $\frac{1}{4}$ Section line to a point approximately 200 feet east of the W $\frac{1}{4}$ Corner Section 28-T87N-R38W; thence southeasterly through said Section 28 to the west corporation line of the town of Odebolt connecting with Market Street.

Beginning again on the east corporation line of the town of Odebolt connecting with Market Street; thence curving southeasterly to a point approximately 800 feet east of the NW Corner Section 35-T87N-R38W; thence east following substantially the section line to the west corporation line of the town of Lake View connecting with Ninth Street.

Beginning again at the east corporation line of the town of Lake View connecting with Ninth Street; thence east following substantially the section line to a point approximately 1100 feet west of the NE Corner Section 31-T87N-R35W; thence curving southeasterly to a point approximately 1100 feet south of the NE Corner of said Section 31; thence south following substantially the section line to a point approximately 1200 feet north of the SW Corner Section 17-T86N-R35W; thence curving southeasterly to a point approximately 1200 feet east of the SW Corner said Section 17; thence east following substantially the section line to the Sac-Calhoun County line near the SE Corner Section 13-T86N-R35W, Sac County (SW Corner Section 18-T86N-R34W, Calhoun County).

OFFICIAL DESCRIPTION CHANGE

COUNTY: Sac

CITY OF: Odebolt

ROUTE: Iowa 175

APPROVAL DATE: 3-19-40

Commencing on Market Street at the west corporation line; thence southeasterly on Market Street to the east corporation line.

NOTE: Revised from Iowa 35 to Iowa 175 Oct. 28, 1947.

REVISED: 10-28-47

OFFICIAL DESCRIPTION CHANGE

COUNTY: Sac

CITY OF: Lake View

ROUTE: US 71 and Iowa 175 (Oct. 28, 1947)

APPROVAL DATE: 2-5-36 (#175 - 10-28-47)

Commencing on Ninth Street at the west corporation line; thence easterly on Ninth Street to the east corporation line.