

OFFICIAL DESCRIPTION CHANGE

OFFICE: Transportation Data

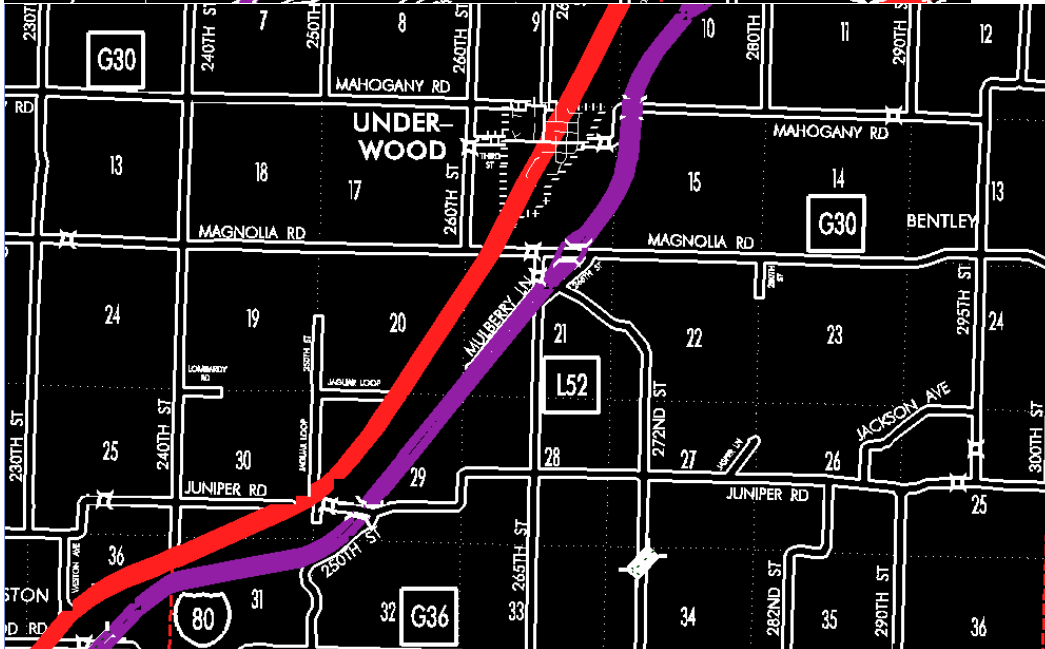
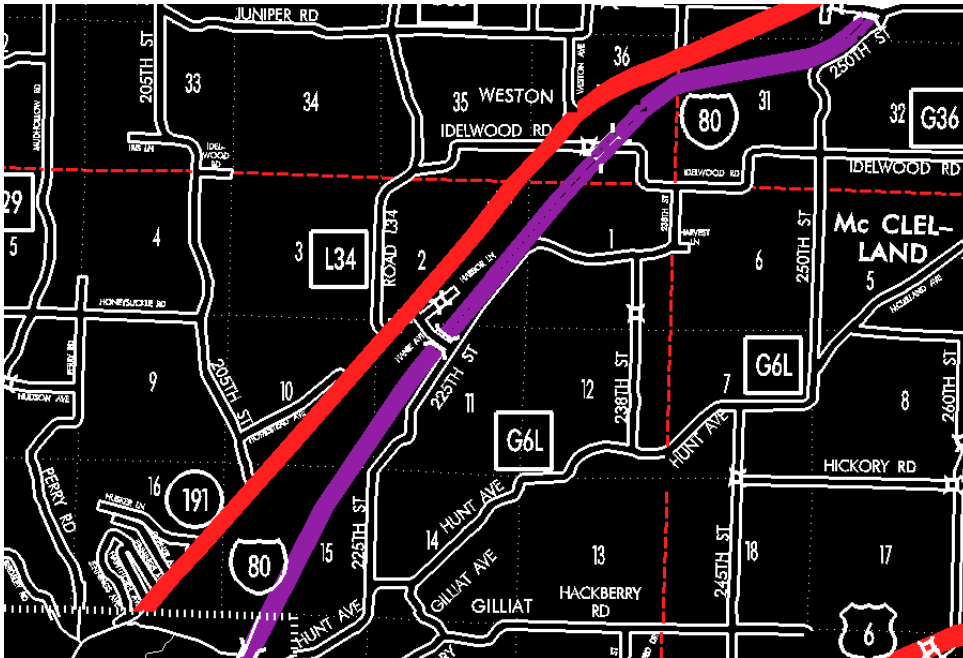
EFFECTIVE DATE: 07-01-2003

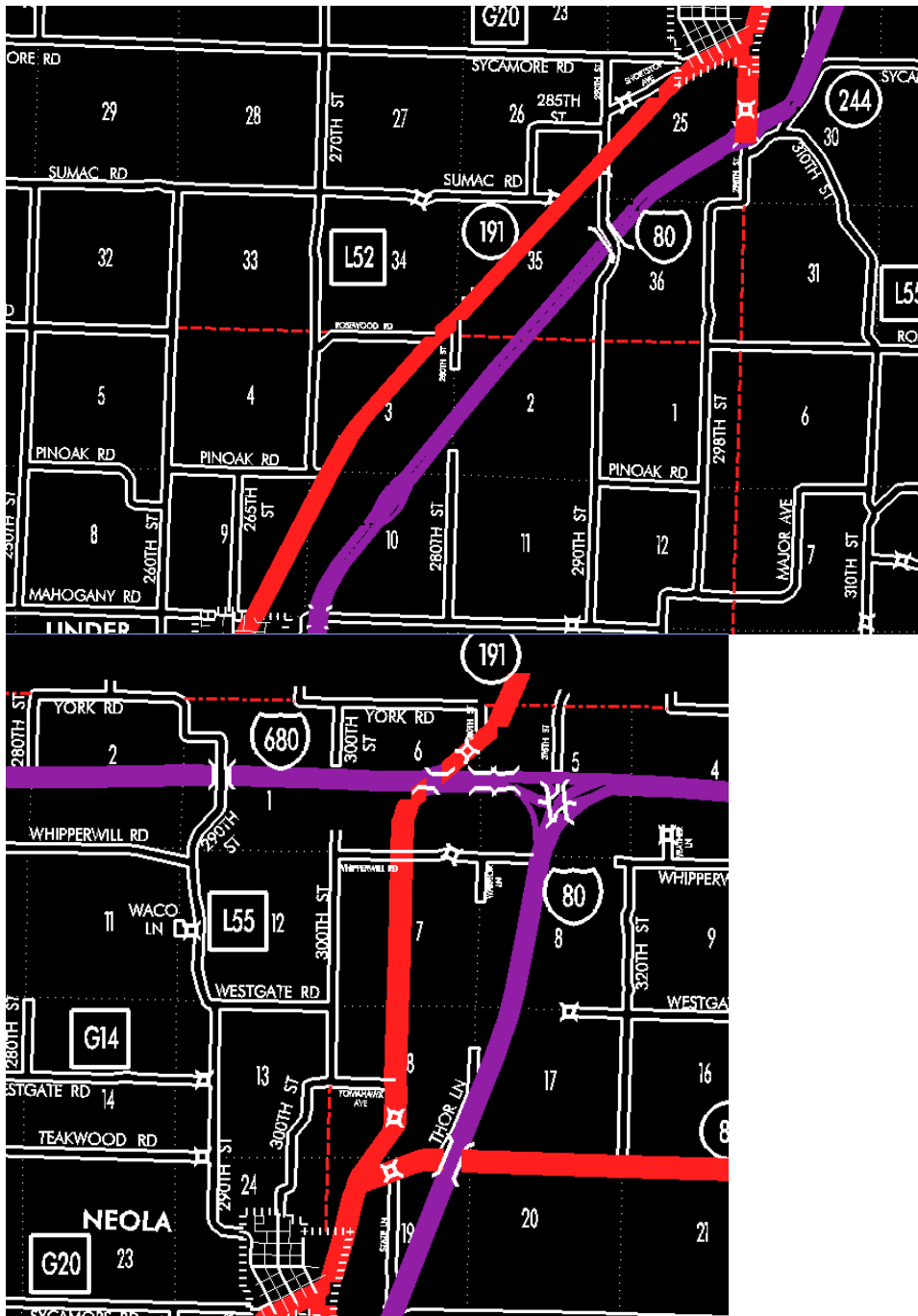
ENTERED BY: Stefani Wonders

ENTERED DATE: 08-22-2006

DISCUSSION/BACKGROUND:

Senate File 451 transferred Iowa 191 from the North Corporation limit of Council Bluffs north to the I-680 interchange, in Pottawattamie County, to city and county jurisdiction on July 1, 2003.





OFFICIAL DESCRIPTION CHANGE

COUNTY: Pottawattamie

ROUTE: Iowa 191

STAFF ACTION NUMBER: S-87-1517

APPROVAL DATE: 5-13-87

New Description – Iowa 191 and its extensions in Pottawattamie County described as follows:

Beginning on the north corporation line of Council Bluffs connecting with an unnamed street; thence in a northeasterly direction through Sections 16, 15, 10, 11 and 2-T75N-R43W, Sections 35 and 36-T76N-R43W and Sections 31, 30, 29, 20, 21 and 16-T76N-R42W to the south corporation line of Underwood connecting with an unnamed street.

Underwood:

Beginning on an unnamed street at the south corporation line; thence in a northeasterly direction on an unnamed street to the north corporation line.

Beginning again on the north corporation line of Underwood connecting with an unnamed street; thence in a northeasterly direction through Sections 9, 10 and 3-T76N-R42W, and Sections 34, 35, 26 and 25-T77N-R42W to the west corporation line of Neola connecting with Front Street.

Neola:

Beginning on Front Street at the west corporation line; thence northeasterly and northerly on Front Street to the north corporation line.

Beginning again on the north corporation line of Neola connecting with Front Street; thence in a northeasterly direction through Sections 19 (junction Iowa 83) and 18-T77N-R41W to a point approximately $\frac{1}{4}$ mile north of the S $\frac{1}{4}$ Corner Section 18-T77N-R41W; thence northerly following substantially the quarter section line of Sections 18, 7 and 6-T77N-R41W to a point approximately $\frac{1}{4}$ mile north of the S $\frac{1}{4}$ Corner

Section 6–T77N–R41W; thence curving in a northeasterly direction through Sections 6 (interchange with Interstate 680) and 5–T77N–R41W to the Pottawattamie–Harrison County line at a point approximately 800 feet east of the NW Corner Section 5–T77N–R41W, Pottawattamie County (SW Corner Section 32–T78N–R41W, Harrison County).

COMMISSION ORDER

DIVISION: Planning & Research

COMMISSION ORDER NUMBER: PR–82–634

SUBMITTED BY: Patrick R. Cain

MEETING DATE: 4–13–82

DISCUSSION/BACKGROUND:

Iowa 191 begins at US 6 in the City of Council Bluffs, and travels generally northeasterly via the Cities of Underwood and Neola to the Pottawattamie–Harrison County line approximately four miles northeast of the City of Neola.

Transfer of jurisdiction agreement number TJ–191–0(11) between the City of Council Bluffs and the Iowa Department of Transportation transferred that portion of Iowa 191 from Broadway Street (junction US 6) northeasterly to the north corporation line to city jurisdiction on October 20, 1981. Iowa 191 in Pottawattamie County and the Cities of Underwood and Neola remain unchanged.

PROPOSAL / ACTION RECOMMENDATION:

It is recommended the commission approve depleting the present description of Iowa 191 in Pottawattamie County from the primary road system and approve including the attached new description of Iowa 191 in the primary road system.

Locate Iowa 191 and its extensions in Pottawattamie County as follows:

Beginning on the north corporation line of the City of Council Bluffs connecting with an unnamed street; thence in a northeasterly direction through Sections 16, 15, 10, 11 and 2-T75N-R43W, Sections 35 and 36-T76N-R43W and Sections 31, 30, 29, 20, 21 and 16-T76N-R42W to the south corporation line of the City of Underwood connecting with an unnamed street.

Underwood:

Beginning on the south corporation line connecting with an unnamed street thence in a northeasterly direction to the north corporation line connecting with an unnamed street.

Beginning again on the north corporation line of the City of Underwood connecting with an unnamed street; thence in a northeasterly direction through Sections 9, 10 and 3-T76N-R42W, and Sections 34, 35, 26 and 25-T77N-R42W to the west corporation line of the City of Neola connecting with an unnamed street.

Neola:

Beginning on the west corporation line connecting with an unnamed street; thence in a northeasterly direction to the north corporation line connecting with an unnamed street.

Beginning again on the north corporation line of the City of Neola connecting with an unnamed street; thence in a northeasterly direction through Sections 19 (junction Iowa 83) and 18-T77N-R41W to a point approximately $\frac{1}{4}$ mile north of the S $\frac{1}{4}$ Corner Section 18-T77N-R41W; thence northerly following substantially the quarter section line of Sections 18, 7 and 6-T77N-R41W to a point approximately $\frac{1}{4}$ mile north of the S $\frac{1}{4}$ Corner Section 6-T77N-R41W; thence curving in a northeasterly direction through Sections 6 (interchange with Interstate

680) and 5-T77N-R41W to the Pottawattamie-Harrison County line at a point approximately 800 feet east of the NW Corner Section 5-T77N-R41W, Pottawattamie County (SW Corner Section 32-T78N-R41W, Harrison County).

REVISED: 5-13-87

COMMISSION ORDER

DIVISION: Planning & Research

COMMISSION ORDER NUMBER: PR-79-272

SUBMITTED BY: C.I. MacGillivray

MEETING DATE: 11-2-78

DISCUSSION/BACKGROUND:

Due to a review of our Primary Road System records Iowa 191 in Pottawattamie County should be deleted and the new description added should be officially included into the Primary System.

Iowa 191 begins at US 6 in Council Bluffs and travels generally northeasterly via Council Bluffs, Underwood and Neola to the Pottawattamie-Harrison County line approximately 4 miles northeast of Neola, Iowa.

PROPOSAL/ACTION RECOMMENDATION:

Locate Iowa 191 and its extensions in Pottawattamie County as follows:

Council Bluffs:

Beginning on an unnamed street at Broadway (junction US 6); thence generally northeasterly to the north corporation line connecting with an unnamed street.

Beginning on the north corporation line of the City of Council Bluffs connecting with an unnamed street; thence in a northeasterly direction along the west side of the Chicago, Rock Island and Pacific Railway and substantially parallel thereto through Sections 16, 15, 10, 11 and 2-T75N-R43W, Sections 35 and 36-T76N-R43W and Sections 31, 30, 29, 20, 21 and 16-T76N-R42W to the south corporation line of the City of Underwood connecting with an unnamed street.

Underwood:

Beginning on the south corporation line connecting with an unnamed street; thence in a northeasterly direction to the north corporation line connecting with an unnamed street.

Beginning again on the north corporation line of the city of Underwood connecting with an unnamed street; thence in a northeasterly direction through sections 9, 10 and 3-T76N-R42W, and Sections 34, 35, 26 and 25-T77N-R42W to the west corporation line of the City of Neola connecting with an unnamed street.

Neola:

Beginning on the west corporation line connecting with an unnamed street; thence in a northeasterly direction to the north corporation line connecting with an unnamed street.

Beginning again on the north corporation line of the City of Neola connecting with an unnamed street; thence in a northeasterly direction through Sections 19 (junction Iowa 83) and 18-T77N-R41W to a point approximately $\frac{1}{4}$ mile north of the S $\frac{1}{4}$ Corner Section 18-T77N-R41W thence northerly following substantially the quarter section line of

Sections 18,17 and 6-T77N-R41W to a point approximately ¼ mile north of the St Corner Section 6-T77N-R41W; thence curving in a northeasterly direction through Sections 6 (interchange with Interstate 680) and 5-T77N-R41W to the Pottawattamie-Harrison County line at a point approximately 800 feet east of the NW Corner Section 5-T77N-R41W, Pottawattamie County (SW Corner Section 32-T78N-R41W, Harrison County).

NOW, THEREFORE: Be it resolved that the Iowa Department of Transportation approve the location of Iowa 191 in Pottawattamie county, Iowa.

NOTE: To become effective upon the adoption of this resolution.

REVISED: 4-13-82

COMMISSION RESOLUTION

DIVISION: Planning & Research

COMMISSION ORDER NUMBER: 69-1440

SUBMITTED BY: Raymond L. Kassel

MEETING DATE: 10-15-69

Beginning at a point on the north corporation line of the City of Council Bluffs, connecting with an unnamed street; thence in a northeasterly direction along the west side of the Chicago, Rock Island and Pacific Railway and substantially parallel thereto through Sections 16, 15, 10, 11 and 2-T75N-R43W, Section 36-T76N-R43W, and Sections 31, 30, 29, 20, 21 and 16-T76N-R42W to the south corporation line of the Town of Underwood, connecting with an unnamed street.

Beginning again on the north corporation line of the Town of Underwood, connecting with an unnamed street on the west side of the Chicago, Rock

Island and Pacific Railway; thence in a northeasterly direction along the west side of said railway and substantially parallel thereto through Sections 9, 10 and 3-T76N-R42W, and Sections 34, 35, 26 and 25-T77N-R42W to the west corporation line of the Town of Neola, connecting with an unnamed street.

Beginning again on the north corporation line of the Town of Neola, connecting with Front Street; thence in a northeasterly direction through Section 19-T77N-R41W to a point near the center of the NW $\frac{1}{4}$ Section 19-T77N-R41W; thence in a northeasterly direction to a point approximately $\frac{1}{4}$ mile north of the St Corner Section 18-T77N-R41W; thence north following substantially the quarter section line to a point approximately $\frac{1}{4}$ mile north of the S $\frac{1}{4}$ Corner Section 6-T77N-R41W; thence in a northeasterly direction through Sections 6 and 5-T77N-R41W to the Pottawattamie-Harrison County line at a point approximately 800 feet east of the NW Corner Section 5-T77N-R41W, Pottawattamie County (SW Corner Section 32-T78N-R41W, Harrison County).

OFFICIAL DESCRIPTION CHANGE

COUNTY: Pottawattamie

CITY OF: Council Bluffs

ROUTE: Iowa 191

APPROVAL DATE: 10-15-69

Beginning at a point approximately 1100 feet west of the east section line in the SE $\frac{1}{4}$ of Section 20-T75N-R43W at the intersection of an unnamed street and relocated US 6; thence in a northeasterly direction on said unnamed street to the north corporation line.

OFFICIAL DESCRIPTION CHANGE

COUNTY: Pottawattamie

ROUTE: Iowa 191

APPROVAL DATE: 12-31-68

Beginning at a point approximately 1100 feet west of the east section line in the SW $\frac{1}{4}$ Section 20-T75N-R43W; thence in a northeasterly direction through Section 20 and 21-T75N-R43W, to a point on the west side of the Chicago, Rock Island and Pacific Railway approximately 1000 feet south of the N $\frac{1}{4}$ Corner Section 21-T75-R43W; thence in a northeasterly direction along the west side of said railway and substantially parallel thereto, through Section 21, 16, 15, 10, 11 and Section 2-T75N-R43W, Section 36-T76N-R43W, and Section 31, 30, 29, 20, 21 and 16-T76N-R42W to the south corporation line of the Town of Underwood connecting with an unnamed street.

Underwood:

Beginning on an unnamed street at the south corporation line; thence northeasterly on unnamed street to the north corporation line.

Beginning again on the north corporation line of the Town of Underwood, connecting with an unnamed street on the west side of the Chicago, Rock Island and Pacific Railway; thence in a northeasterly direction along the west side of said railway and substantially parallel thereto through Section 9, 10 and Section 3-T76N-R42W, and Sec 34, 35, 26 and 25-T77N-R42W to the west corporation line of the Town of Neola, connecting with an unnamed street.

Neola:

Beginning on unnamed street at the west corporation line near the southwest corner of the corporation; thence northeasterly on unnamed street approximately 1081 feet to Front Street; thence northeasterly on

Front Street to the north corporation line near the northeast corner of the corporation.

Beginning again on the north corporation line of the Town of Neola, connecting with Front Street; thence in a northeasterly direction through Section 19-T77N-R41W to a point near the center of the NW $\frac{1}{4}$ Section 19-T77N-R41W; thence in a northeasterly direction to a point approximately $\frac{1}{4}$ mile north of the S $\frac{1}{4}$ Corner Section 18-T77N-R41W; thence north following substantially the quarter section line to a point approximately $\frac{1}{4}$ mile north of the S $\frac{1}{4}$ Corner Section 6-T77N-R41W; thence in a northeasterly direction through Section 6 and 5-T77N-R41W to the Pottawattamie-Harrison County line at a point approximately 800 feet east of the NW Corner Section 5-T77N-R41W, Pottawattamie (SW Corner Section 32-T78N-R41W, Harrison County).