

OFFICIAL DESCRIPTION CHANGE

OFFICE: Transportation Data

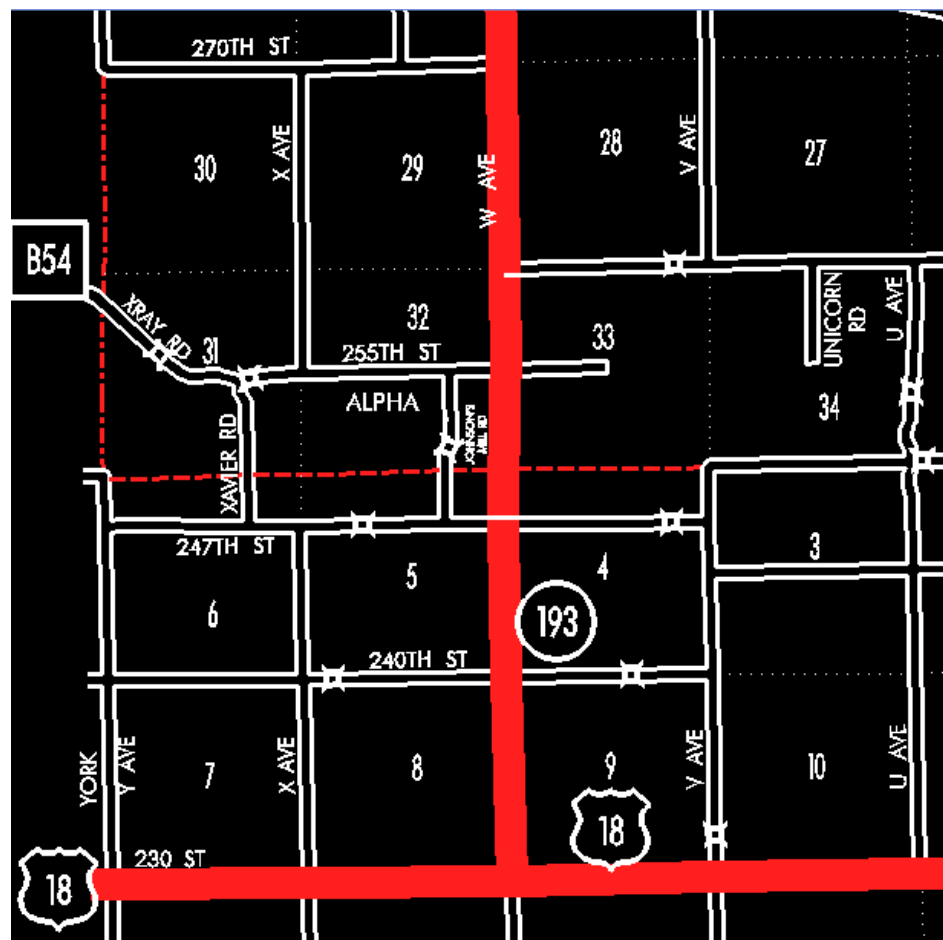
EFFECTIVE DATE: 07-01-2003

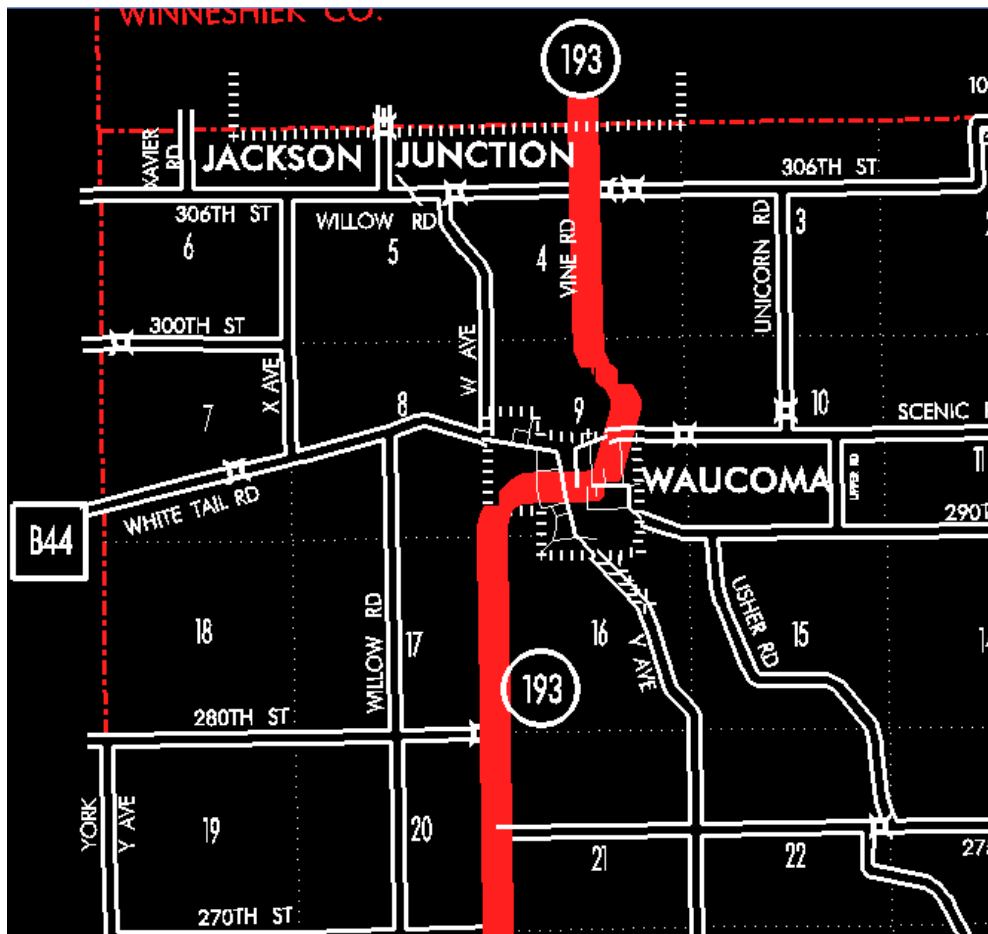
ENTERED BY: Stefani Wonders

ENTERED DATE: 08-28-2006

DISCUSSION/BACKGROUND:

Senate File 451 transferred Iowa 193 in its entirety, in Fayette County, to city and county jurisdiction on July 1, 2003.





OFFICIAL DESCRIPTION CHANGE

COUNTY: Fayette

ROUTE: Iowa 193

STAFF ACTION NUMBER: S-87-716

APPROVAL DATE: 12-18-86

New Description – Iowa 193 and its extensions in Fayette County described as follows:

Beginning at a point near the SW Corner of Section 9–T94N–R10W (junction US 18); thence north following substantially the section line of Sections 9 and

4-T94N-R10W and Sections 33, 28, 21, and 16-T95N-R10W to a point near the NW Corner of Section 16-T95N-R10W; thence northeasterly through Section 9-T95N-R10W to the south corporation line of Waucoma connecting with Riverview Drive.

Waucoma:

Beginning at the south corporation line on Riverview Drive; thence northeasterly and easterly on Riverview Drive to 1st Street East; thence east on 1st Street East to a point near the intersection with 2nd Avenue Northeast; thence northeasterly on an unnamed street to the north corporation line.

Beginning again at the north corporation line of Waucoma connecting with an unnamed street; thence northerly and northwesterly through Section 9-T95N-R10W to a point near the N $\frac{1}{4}$ Corner of Section 9-T95N-R10W; thence north following substantially the center section line of Section 4-T95N-R10W to the Fayette-Winneshiek County line at a point near the N $\frac{1}{4}$ Corner of Section 4-T95N-R10W, Fayette County (S $\frac{1}{4}$ Corner of Section 33-T96N-R10W, Winneshiek County) on the south corporation line of the City of Jackson Junction connecting with Main Street.

COMMISSION ORDER

DIVISION: Planning & Research

COMMISSION ORDER NUMBER: PR-79-272

SUBMITTED BY: C.I. MacGillivray

MEETING DATE: 11-2-78

DISCUSSION/BACKGROUND:

Due to a review of our Primary Road System records, Iowa 193 in Fayette County, Iowa should be deleted and the new description added should be officially included into the Primary System.

Iowa 193 begins at the junction of US 18 approximately 6 miles northwest of Hawkeye and travels in a northerly direction via the City of Waucoma to the Fayette–Winneshiek County line on the south corporation line of Jackson Junction, Iowa.

PROPOSAL/ACTION RECOMMENDATION:

Locate Iowa 193 and its extension in Fayette County as follows:

Beginning at a point near the SW Corner of Section 9-T94N-R10W (junction US 18); thence north following substantially the section line of Sections 9 and 4-T94N-R10W and Sections 33, 23, 21, and 16-T95N-R10W to a point near the NW Corner of Section 16-T95N-R10W; thence northeasterly through Section 9-T95N-R10W to the west corporation line of the City of Waucoma connecting with an unnamed street.

Waucoma:

Beginning at the west corporation line connecting with an unnamed street; thence northeasterly, easterly and northeasterly to the north corporation line connecting with an unnamed street.

Beginning again at the north corporation line of the City of Waucoma connecting with an unnamed street; thence northerly and northwesterly through Section 9-T95N-R10W to a point near the N $\frac{1}{4}$ Corner of Section 9-T95N-R10W; thence north following substantially the center section line of Section 4-T95N-R10W to the Fayette-Winneshiek County line at a point near the N $\frac{1}{4}$ Corner of Section 4-T95N-R10W, Fayette County (S $\frac{1}{4}$ Corner of Section 33-T96N-R10W, Winneshiek County) on the south corporation line of the City of Jackson Junction connecting with an unnamed street.

NOW, THEREFORE: Be it resolved that the Iowa Department of Transportation approve the location of Iowa 193 in Fayette County, Iowa.

NOTE: To become effective upon the adoption of this resolution.

OFFICIAL DESCRIPTION CHANGE

COUNTY: Fayette

ROUTE: Iowa 193

APPROVAL DATE: 6-15-54

Beginning at a point near the SE Corner of Section 8-T94-R10; thence north following substantially the section line to a point near the SE Corner of Section 8-T95-R10; thence northeasterly to the west corporation line of the Town of Waucoma connecting with an unnamed street.

Waucoma:

Beginning on unnamed street at the west corporation line; thence northeasterly on unnamed street to Diagonal Street; thence easterly on Diagonal Street and Bridge Street to the intersection of Bridge Street and Ann Street; thence northeasterly on an unnamed street to the north corporation line.

Beginning on the north corporation line of the Town of Waucoma, connecting with an unnamed street; thence east, north and northwesterly to a point near the S $\frac{1}{4}$ Corner of Section 4-T95-R10; thence north to the Fayette-Winneshiek County line at a point near the N $\frac{1}{4}$ Corner of Section 4-T95-R10, Fayette County (S $\frac{1}{4}$ Corner of Section 33-T96-R10 Winneshiek County), connecting with an unnamed street in the Town of Jackson Junction.