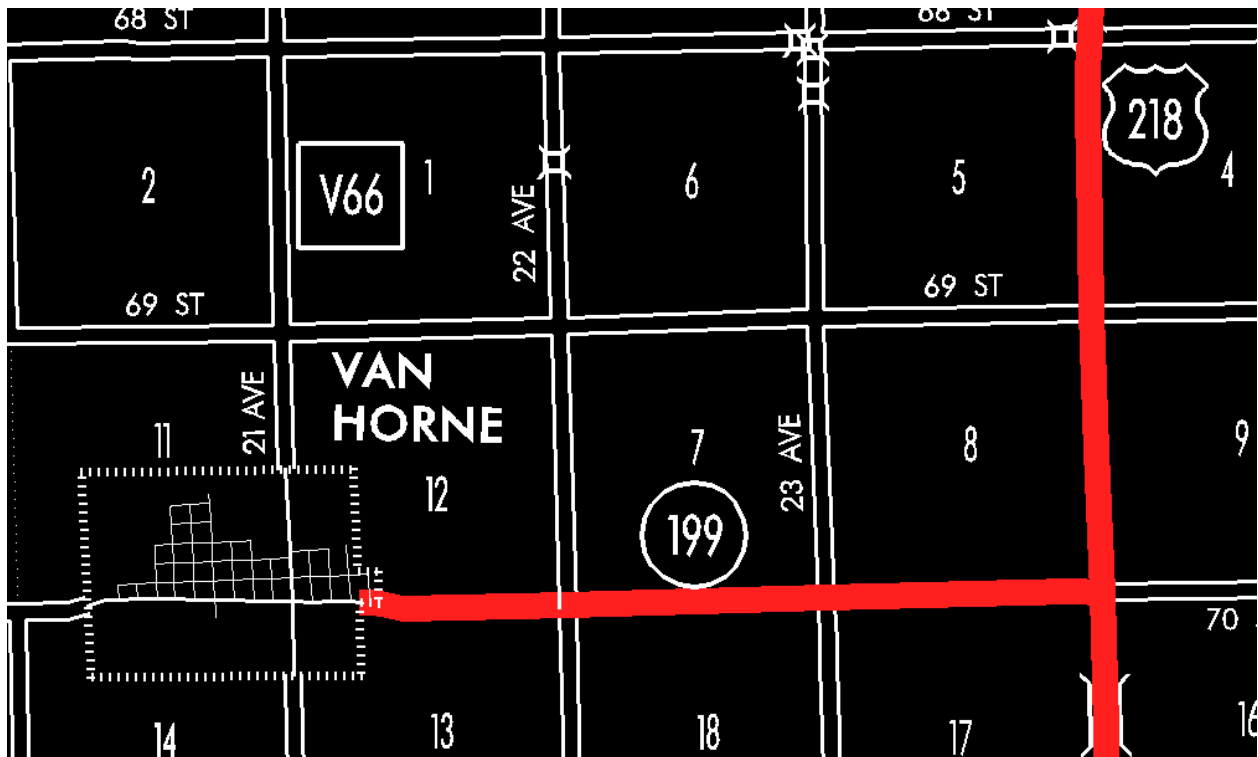


ENTERED DATE: 08-24-2006

Senate File 451 transferred Iowa 199 in its entirety, in Benton County, to county jurisdiction on July 1, 2003.



APPROVAL DATE: 12-18-86

New Description – Iowa 199 in Benton County described as follows:

Beginning at the east corporation line of Van Horne connecting with 1st Avenue; thence easterly through Sections 12 and 13–T83N–R11W and Sections 18 and 17–T83N–R10W to a point near the NE Corner Section 17–T83N–R10W (junction US 218).

COMMISSION ORDER

DIVISION: Planning & Research

COMMISSION ORDER NUMBER: PR-82-436

SUBMITTED BY: Patrick R. Cain

MEETING DATE: 1-5-82

DISCUSSION/BACKGROUND:

Iowa 199 begins in the City of Van Horne, and travels easterly approximately three miles to US 218.

An automatic transfer of jurisdiction transferred that portion of Iowa 199 in the City of Van Horne from Main Street easterly to the east corporation line to city jurisdiction on July 1, 1980.

PROPOSAL/ACTION RECOMMENDATION:

It is recommended the commission approve deleting the present description of Iowa 199 in Benton County from the primary road system and approve including the attached new description of Iowa 199 in the primary road system.

Locate Iowa 199 in Benton County as follows:

Beginning at the east corporation line of the City of Van Horne connecting with an unnamed street; thence easterly through Sections 12 and 13-T83N-R11W and Sections 18 and 17-T83N-R10W to a point near the NE Corner Section 17-T83N-R10W (junction US 218).

COMMISSION ORDER

DIVISION: Planning & Research

COMMISSION ORDER NUMBER: PR-79-272

SUBMITTED BY: C. I. MacGillivray

MEETING DATE: 11-2-78

DISCUSSION/BACKGROUND:

Due to a review of our Primary Road System records, Iowa 199 in Benton County, Iowa should be deleted and the new description added should be officially included into the Primary System.

Iowa 199 begins in the City of Van Horne and travels easterly to the junction of US 218 approximately 3 miles west of Newhall.

PROPOSAL/ACTION RECOMMENDATION:

Locate Iowa 199 and its extension in Benton County as follows:

Van Horne:

Beginning at the west line of Main Street; thence easterly to the east corporation line connecting with an unnamed street.

Beginning at the east corporation line of the City of Van Horne connecting with an unnamed street; thence easterly following substantially the section line of Sections 13-T83N-R11W, continuing easterly along Sections 18 and 17-T83N-R10W to a point near the NE Corner of Section 17-T83N-R10W (intersection of US 218).

NOW, THEREFORE: Be it resolved that the Iowa Department of Transportation approve the location of Iowa 199 in Benton County, Iowa.

NOTE: To become effective upon the adoption of this resolution.

REVISED: 1-5-82

COMMISSION ORDER

DIVISION: Planning & Research

SUBMITTED BY: Raymond L. Kassel

MEETING DATE: 8-10-76

DISCUSSION/BACKGROUND:

Due to a review of our Primary Road System records, Iowa 199 in Benton County, Iowa should be deleted and the new description added should be officially included into the Primary System.

Iowa 199 begins in the City of Van Horne and travels easterly to the junction of US 218 approximately 3 miles west of Newhall.

PROPOSAL/ACTION RECOMMENDATION:

Locate Iowa 199 and its extensions in Benton County as follows:

Van Horne:

Beginning at the west line of Main Street; thence easterly to the east corporation line connecting with an unnamed street.

Beginning at the east corporation line of the City of Van Horne connecting with an unnamed street; thence easterly following substantially the section line of Sections 13-T83N-R11W continuing easterly along Sections 18 and 17-T83N-R10W to a point near the NE Corner of Section 17-T83N-R10W (intersection of US 218).

NOW, THEREFORE: Be it resolved that the Iowa Department of Transportation approve the location of Iowa 199 in Benton County, Iowa.

NOTE: To become effective upon the adoption of this resolution.

OFFICIAL DESCRIPTION CHANGE

COUNTY: Benton

CITY OF: Van Horne

ROUTE: Iowa 199

APPROVAL DATE: 10-24-62

Commencing on Railway Street at the east corporation line; thence west on Railway Street to the west line of Main Street.

OFFICIAL DESCRIPTION CHANGE

COUNTY: Benton

ROUTE: Iowa 199

APPROVAL DATE: 4-14-37

Beginning on the east corporation line of the Town of Van Horne connecting with Railway Street; thence east following substantially the section line to a point near the NE Corner of Section 17-T83N-R10W.