

OFFICIAL DESCRIPTION CHANGE

OFFICE: Transportation Data

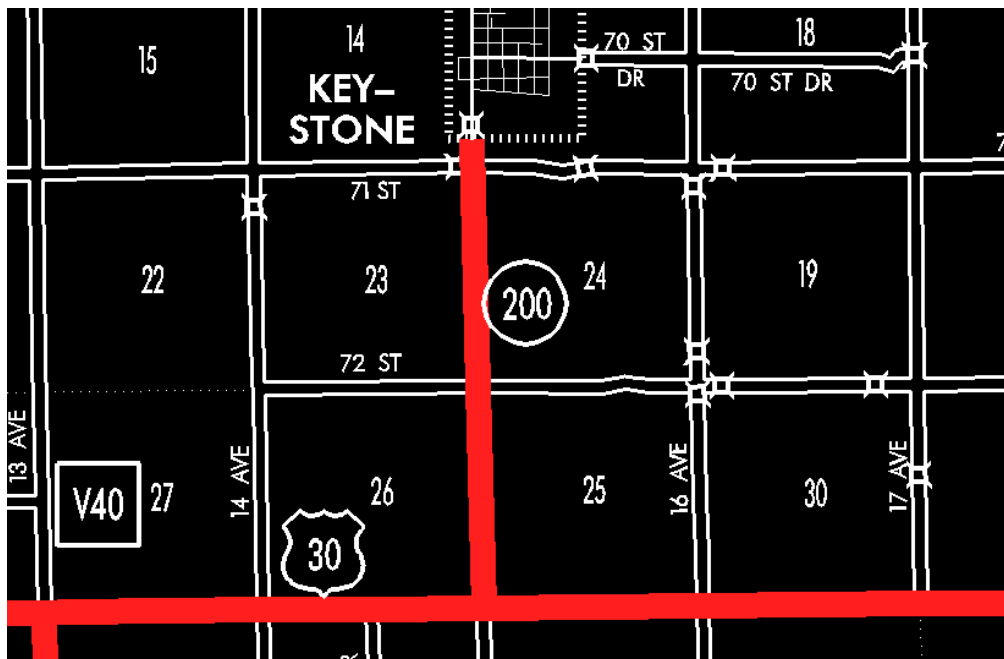
EFFECTIVE DATE: 07-01-2003

ENTERED BY: Stefani Wonders

ENTERED DATE: 08-24-2006

DISCUSSION/BACKGROUND:

Senate File 451 transferred Iowa 200 in its entirety, in Benton County, to county jurisdiction on July 1, 2003.



OFFICIAL DESCRIPTION CHANGE

COUNTY: Benton

ROUTE: Iowa 200

STAFF ACTION NUMBER: S-87-687

APPROVAL DATE: 12-18-86

New Description – Iowa 200 in Benton County described as follows:

Beginning at a point near the SW Corner of Section 25–T83N–R12W (junction US 30); thence north following substantially the section line of Sections 25, 24, and 13–T83N–R12W to the south corporation line of Keystone connecting with 5th Avenue.

COMMISSION ORDER

DIVISION: Planning & Research

COMMISSION ORDER NUMBER: PR–82–437

SUBMITTED BY: Patrick R. Cain

MEETING DATE: 1–5–82

DISCUSSION/BACKGROUND:

Iowa 200 begins at US 30 approximately 2 ½ miles south of the City of Keystone, and travels northerly to the City of Keystone.

Transfer of jurisdiction agreement number TJ–200–0 (2), between the City of Keystone and the Iowa Department of Transportation, transferred that portion of Iowa 200 in the City of Keystone from the south corporation line northerly, easterly and northerly to Second Street to city jurisdiction on October 1, 1980.

PROPOSAL/ACTION RECOMMENDATION:

It is recommended the commission approve deleting the present description of Iowa 200 in Benton County from the primary road system and approve including the attached new description of Iowa 200 in the primary road system.

Locate Iowa 200 in Benton County as follows:

Beginning at a point near the SW Corner of Section 25–T83N–R12W (junction US 30); thence north following substantially the section line of Sections 25, 24, and 13–T83N–R12W to the south corporation line of the City of Keystone connecting with an unnamed street.

REVISED: 12-18-86

COMMISSION ORDER

DIVISION: Planning & Research

COMMISSION ORDER NUMBER: PR-79-272

SUBMITTED BY: C.I. MacGillivray

MEETING DATE: 11-2-78

DISCUSSION/BACKGROUND:

Due to a review of our Primary Road System records, Iowa 200 in Benton County, Iowa should be deleted and the new description added should be officially included into the Primary System.

Iowa 200 begins at the junction of US 30 approximately 2 ¼ miles south of Keystone and travels northerly into the City of Keystone.

PROPOSAL/ACTION RECOMMENDATION:

Locate Iowa 200 and its extension in Benton County as follows:

Beginning at a point near the SW Corner of Section 25-T83N-R12W (junction US 30); thence north following substantially the section line of Sections 25, 24, and 13-T83N-R12W to the south corporation line of the City of Keystone connecting with an unnamed street.

Keystone:

Beginning at the south corporation line connecting with an unnamed street thence north to Railroad Street; thence easterly to Main Street thence northerly to Second Street.

NOW, THEREFORE: Be it resolved that the Iowa Department of Transportation approve the location of Iowa 200 in Benton County, Iowa.

NOTE: To become effective upon adoption of this resolution.

REVISED: 1-5-82

COMMISSION ORDER

DIVISION: Planning & Research

SUBMITTED BY: Raymond L. Kassel

MEETING DATE: 8-10-76

DISCUSSION/BACKGROUND:

Due to a review of our Primary Road System records, Iowa 200 in Benton County, Iowa should be deleted and the new description added should be officially included into the Primary System.

Iowa 200 begins at the junction of US 30 approximately 2 ¼ miles south of Keystone and travels northerly into the City of Keystone.

PROPOSAL/ACTION RECOMMENDATION:

Locate Iowa 200 and its extensions in Benton County as follows:

Beginning at a point near the SW Corner of Section 25-T83N-R12W (junction US 30); thence north following substantially the section line of Sections 25, 24, and 13-T83N-R12W to the south corporation line of the City of Keystone connecting with an unnamed street.

Keystone:

Beginning at the south corporation line connecting with an unnamed street thence north to Railroad Street; thence easterly to Main Street; thence northerly to Second Street.

NOW, THEREFORE: Be it resolved that the Iowa Department of Transportation approve the location of Iowa 200 in Benton County, Iowa.

NOTE: To become effective upon adoption of this resolution.

OFFICIAL DESCRIPTION CHANGE

COUNTY: Benton

CITY OF: Keystone

ROUTE: Iowa 200

APPROVAL DATE: 4-16-40

Commencing on Fifth Avenue at the south corporation line; thence north on Fifth Avenue to Railway Street; thence east on Railway Street to Main Street; thence north on Main Street to Second Street.

OFFICIAL DESCRIPTION CHANGE

COUNTY: Benton

ROUTE: Iowa 200

APPROVAL DATE: 4-14-37

Beginning at a point near the SW Corner of Section 25-T83N-R12W; thence north following substantially the section line to the south corporation line of the Town of Keystone connecting with Fifth Avenue.