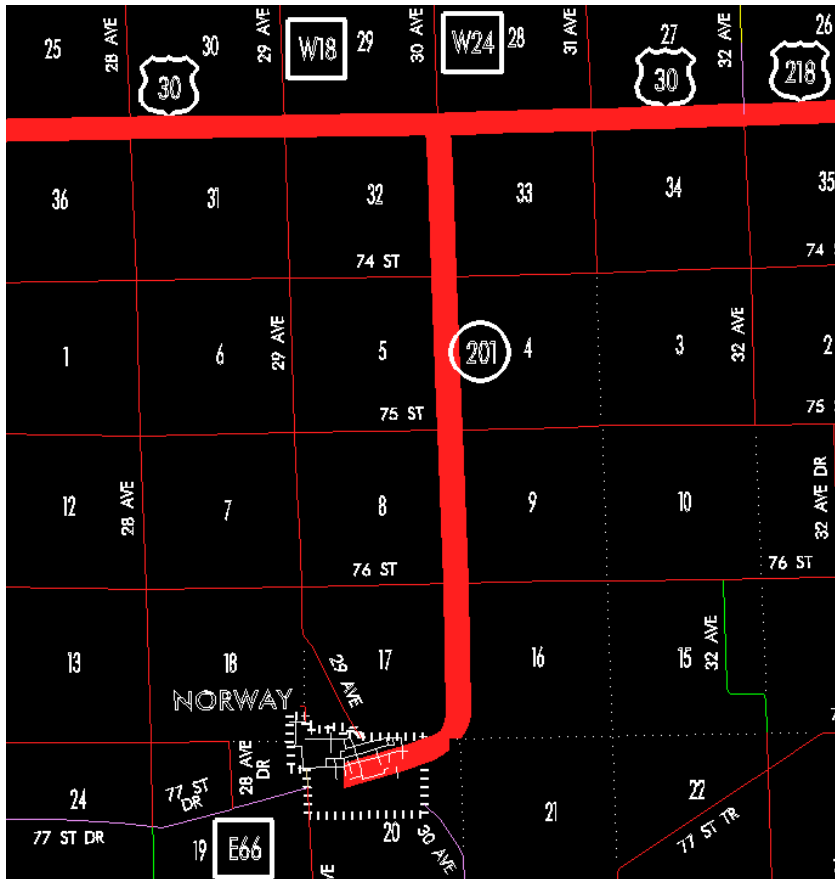


**OFFICIAL DESCRIPTION CHANGE****OFFICE:** Transportation Data**EFFECTIVE DATE:** 07-01-2003**ENTERED BY:** Stefani Wonders**ENTERED DATE:** 02-17-2005**DISCUSSION/BACKGROUND:**

Senate file 451, transferred that portion of Iowa 201 from the west side of the intersection of Railroad and Younglove Street (City of Norway); thence northeasterly on Railroad Street to the east corporation line (approximately 1250 feet west and 510 feet south of the NE Corner of Section 20-T82N-R9W) and again at the east corporation line of Norway connecting with Railroad Street; thence curving northeasterly through Sections 20 and 17-T82N-R9W to a point approximately 900 feet north of the SW Corner 16-T82N-R9W; thence north following substantially the section line of Sections 16, 9, 4, and 33-T83N-R9W to the NW Corner Section 33-T83N-R9W (junction US 30 and 218) to county and city jurisdiction on July 1, 2003.



## STAFF ACTION

OFFICE: Transportation Data

STAFF ACTION NUMBER: S-96-1220

SUBMITTED BY: Patrick R. Cain

SUBMITTAL DATE: 12-1-95

## DISCUSSION/BACKGROUND:

Due to reconstruction of Iowa 201 and US 30 intersection in 1992, the official description in the Primary Road System should be revised to reflect this change.

## **PROPOSAL/ACTION RECOMMENDATION:**

It is recommended the old description of Iowa 201 in Benton County be deleted from the Primary Road System and the new description, as described in the attachment, be included in the Primary Road System.

New Description – Iowa 201 and its extension in Benton County described as follows:

Norway:

Beginning on the west side of the intersection of Railroad and Younglove Street; thence northeasterly on Railroad Street to the east corporation line.

Beginning at the east corporation line of Norway connecting with Railroad Street; thence curving northeasterly through Sections 20 and 17–T82N–R9W to a point approximately 900 feet north of the SW Corner 16–T82N–R9W; thence north following substantially the section line of Sections 16, 9, 4, and 33–T83N–R9W to the NW Corner Section 33–T83N–R9W (junction US 30 and 218).

## **OFFICIAL DESCRIPTION CHANGE**

**COUNTY:** Benton

**ROUTE:** Iowa 201

**STAFF ACTION NUMBER:** S-87-687

**APPROVAL DATE:** 12-18-86

New Description – Iowa 201 and its extension in Benton County described as follows:

Norway:

Beginning on the west side of the intersection of Railroad and Younglove Street; thence northeasterly on Railroad Street to the east corporation line.

Beginning at the east corporation line of Norway connecting with Railroad Street; thence curving northeasterly through sections 20 and 17-T82N-R9W to a point approximately 900 feet north of the SW Corner 16-T82N-R9W; thence north following substantially the section line of Sections 16, 9, and 4-T82N-R9W continuing along approximately the section line of Section 33-T83N-R9W to a point approximately 886 feet north of the W $\frac{1}{4}$  Corner Section 33-T83N-R9W; thence in a northeasterly direction through said Section 33 to a point approximately 500 feet east of the NW Corner Section 33-T83N-R9W (junction US 30 and 218).

**COMMISSION ORDER**

**DIVISION:** Planning & Research

**COMMISSION ORDER NUMBER:** PR-79-272

**SUBMITTED BY:** C. I. MacGillivray

**MEETING DATE:** 11-2-78

**DISCUSSION/BACKGROUND:**

Due to a review of our Primary Road System records, Iowa 201 in Benton County, Iowa should be deleted and the new description added should be officially included into the Primary System.

Iowa 201 begins in Norway and travels northeasterly and northerly to the junction of US 30 and 218 approximately 4 miles north of Norway.

**PROPOSAL/ACTION RECOMMENDATION:**

Locate Iowa 201 and its extension in Benton County as follows:

Norway:

Beginning on the west side of the intersection on Railroad Street and Younglove Street; thence northeasterly to the east corporation line connecting with an unnamed street.

Beginning at the east corporation line of the City of Norway at an unnamed street; thence curving northeasterly through Sections 20 and 17-T82N-R9W to a point approximately 900 feet north of the SW Corner Section 16-T82N-R9W; thence north following substantially the section line of Sections 16, 9, and 4-T82N-R9W continuing along approximately the section line of Section 33-T83N-R9W to a point approximately 886 feet north of the W¼ Corner Section 33-T83N-R9W; thence in a northeasterly direction to a point approximately 500 feet east of the NW Corner Section 33-T83N-R9W (junction US 30 and 218).

NOW, THEREFORE: Be it resolved that the Iowa Department of Transportation approve the location of Iowa 201 in Benton County, Iowa.

NOTE: To become effective upon the adoption of this resolution.

REVISED: 12-18-86

**COMMISSION ORDER**

**DIVISION:** Planning & Research

**SUBMITTED BY:** Raymond L. Kassel

**MEETING DATE:** 8-10-76

**DISCUSSION/BACKGROUND:**

Due to a review of our Primary Road System records, Iowa 201 in Benton County, Iowa should be deleted and the new description added should be officially included into the Primary System.

Iowa 201 begins in Norway and travels northeasterly and northerly to the junction of US 30 and 218 approximately 4 miles north of Norway.

**PROPOSAL/ACTION RECOMMENDATION:**

Locate Iowa 201 and its extensions in Benton County as follows:

Norway:

Beginning on the west side of the intersection on Railroad Street and Younglove Street; thence northeasterly to the east corporation line connecting with an unnamed street.

Beginning at the east corporation line of the City of Norway at an unnamed street; thence curving northeasterly through the SE Corner of Section 17-T82N-R9W to a point approximately 900 feet north of the SW Corner Section 16-T82N-R9W; thence north following substantially the section line of Sections 16, 9, and 4-T82N-R9W continuing along approximately the section line of Section 33-T83N-R9W to a point approximately 886 feet north of the W ¼ Corner Section 33-T83N-R9W; thence in a northeasterly direction to a point approximately 500 feet east of the NW Corner Section 33-T83N-R9W (junction US 30 and 218).

NOW, THEREFORE: Be it resolved that the Iowa Department of Transportation approve the location of Iowa 201 in Benton County, Iowa.

NOTE: To become effective upon the adoption of this resolution.

**OFFICIAL DESCRIPTION CHANGE**

**COUNTY:** Benton

**ROUTE:** 201

**APPROVAL DATE:** 10-2-56

Norway:

Commencing at the west side of the intersection of Railroad Street and Younglove Street; thence northeasterly on Railroad Street to the east corporation line.

Beginning on Railroad Street at the east corporation line of the Town of Norway; thence northeasterly to a point approximately 900 feet north of the SW Corner Section 16-T82N-R9W; thence north following substantially the section line to a point approximately 886 feet north of the W ¼ Corner Section 33-T83N-R9W; thence in a northeasterly direction to a point approximately 500 feet east of the NW Corner Section 33-T83N-R9W.

**OFFICIAL DESCRIPTION CHANGE**

**COUNTY:** Benton

**ROUTE:** 201

**APPROVAL DATE:** 04-14-37

Beginning on the north corporation line of the Town of Norway connecting with Main Street thence in a northwesterly direction to a point approximately 1 /3 mile south of the NW cor. of Sec. 17-T82-49, thence north following substantially the section line to a point near the NW Cor. of Sec. 32-T83-R9.

