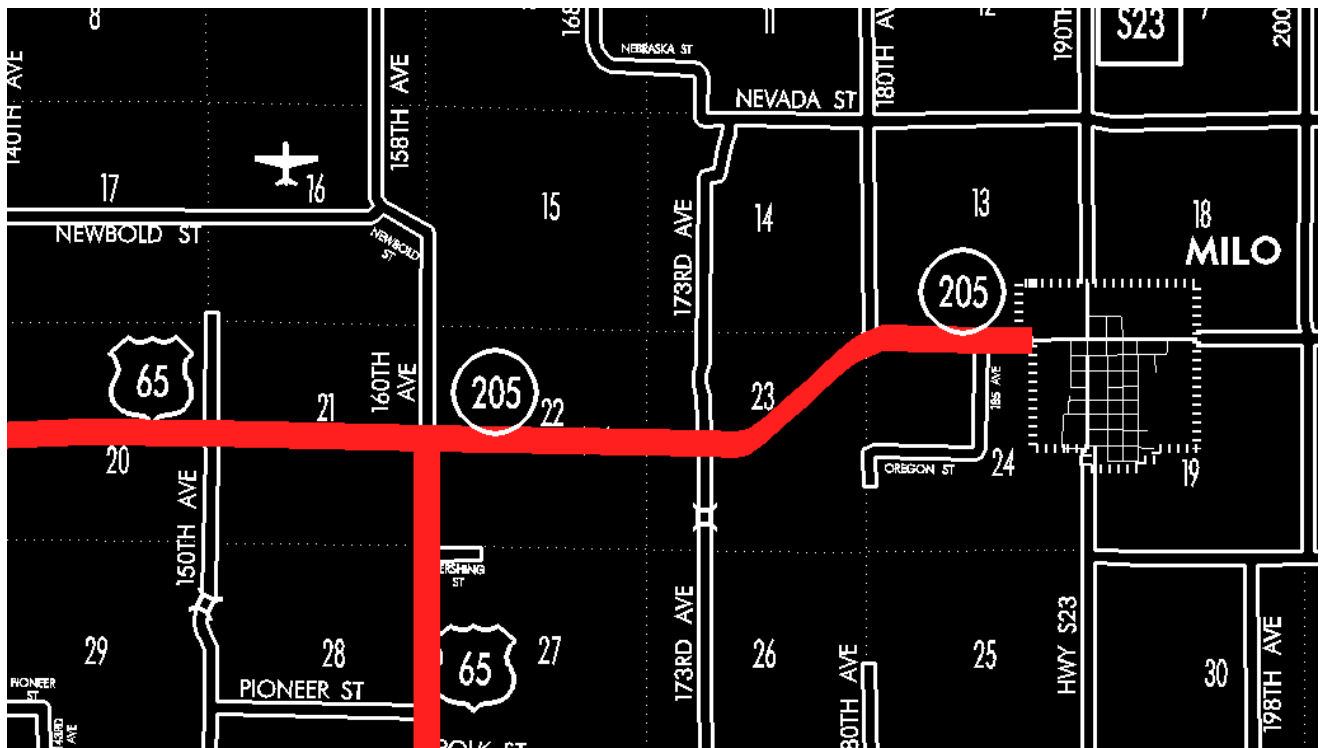


ENTERED DATE: 08-22-2006

Senate File 451 transferred Iowa 205 in its entirety, in Warren County, to county jurisdiction on July 1, 2003.



MEETING DATE: 4-12-96

DISCUSSION/BACKGROUND:

Transfer of jurisdiction agreement number TJ-205-0(2)-91 between the Iowa Department of Transportation and the City of Milo transferred Iowa 205 to the City of Milo on August 1, 1980 and should be removed from the Primary Road System.

Iowa 205 begins at the junction of US 65 and travels east; thence northeast to 1st Street in Milo.

PROPOSAL/ACTION RECOMMENDATION:

It is recommended that Iowa 205 in Milo, be deleted from the Primary Road System.

New Description:

Beginning at a point near the W ¼ Corner Section 22-T75N-R23W (junction US 65); thence east following substantially the center section line of Sections 22 and 23-T75N-R23W to a point approximately 1,300 feet east of the W ¼ Corner Section 23-T75N-R23W; thence northeast through said Section 23 to a point near the NE Corner said Section 23; thence east following substantially the section line of Section 24-T75N-R23W to the west corporation line of Milo, connecting with Belmont Street.

OFFICIAL DESCRIPTION CHANGE

COUNTY: Warren

ROUTE: Iowa 205

STAFF ACTION NUMBER: S-87-1504

APPROVAL DATE: 5-13-87

New Description – Iowa 205 and its extension in Warren County described as follows:

Beginning at a point near the W ¼ Corner Section 22–T75N–R23W (junction US 65); thence east following substantially the center section line of Sections 22 and 23–T75N–R23W to a point approximately 1,300 feet east of the W ¼ Corner Section 23–T75N–R23W; thence northeast through said Section 23 to a point near the NE Corner said Section 23; thence east following substantially the section line of Section 24–T75N–R23W to the west corporation line of Milo, connecting with Belmont Street.

Milo:

Beginning on Belmont Street at the west corporation line; thence east on Belmont Street to 4th Street; thence south on 4th Street to Main Street; thence east on Main Street to 1st Street.

COMMISSION ORDER

DIVISION: Planning & Research

COMMISSION ORDER NUMBER: PR–79–272

SUBMITTED BY: C.I. MacGillivray

MEETING DATE: 11–2–78

DISCUSSION/BACKGROUND:

Iowa 205 begins at US 65 approximately 3 miles west of Milo, and travels generally easterly to a point in Milo, Iowa.

Due to a review of our Primary Road System Records Iowa 205 in Warren County should be deleted and the new description added should be officially included into the Primary System.

PROPOSAL/ACTION RECOMMENDATION:

It is recommended that the old description of Iowa 205 in Warren County be deleted and the new description, as referred in the attached detailed description, be included in the Primary Road System effective upon the adoption of this resolution.

Locate Iowa 205 and its extension in Warren County as follows:

Beginning at a point near the W $\frac{1}{4}$ Corner Section 22-T75N-R23W (junction US 65); thence easterly following substantially the center section line of Sections 22 and 23-T75N-R23W to a point approximately 1300 feet east of the W $\frac{1}{4}$ Corner Section 23-T75N-R23W; thence in a northeasterly direction through said Section 23 to a point near the NE Corner said Section 23; thence easterly following substantially the section line of Section 24-T75N-R23W to the west corporation line of the City of Milo connecting with an unnamed street.

Milo:

Beginning on the west corporation line connecting with an unnamed street; thence easterly, southerly, and easterly to First Street.

OFFICIAL DESCRIPTION CHANGE

COUNTY: Warren

CITY OF: Milo

ROUTE: Iowa 205

APPROVAL DATE: 7-6-50

Beginning at the west corporation line on Belmont Street; thence east on Belmont Street to Fourth Street; thence south on Fourth Street to Main Street; thence east on Main Street to the east line of First Street.

OFFICIAL DESCRIPTION CHANGE

COUNTY: Warren

APPROVAL DATE: 4-14-37

CONNECTING CURVES

Junction of US 6 and US 65

Beginning at a point approximately $\frac{1}{4}$ mile west of the E $\frac{1}{4}$ Corner Section 24-T75N-R24W; thence curving in a southwesterly direction 1500 to a point approximately feet west and 300 feet south of the E $\frac{1}{4}$ Corner Section 24-T75N-R24W.

Junction of US 65 and Iowa 205

Beginning at a point approximately 200 feet south of the E $\frac{1}{4}$ Corner Section 21-T75N-R23W; thence north to a point near the E $\frac{1}{4}$ Corner Section 21-T75N-R23W.

OFFICIAL DESCRIPTION CHANGE

COUNTY: Warren

ROUTE: Iowa 205

APPROVAL DATE: 4-14-37

Beginning at a Point approximately 200 feet west of the E $\frac{1}{4}$ Corner Section 21-T75N-R23W; thence east following substantially the quarter section line to a point approximately $\frac{1}{4}$ mile east of the W $\frac{1}{4}$ Corner Section 23-T75N-R23W; thence in a northeasterly direction to a point near the NE Corner Section 23-T75N-R23W; thence east following substantially the section line to the west corporation line of the Town of Milo connecting with Belmont Street.