

**OFFICIAL DESCRIPTION CHANGE**

**OFFICE:** Transportation Data

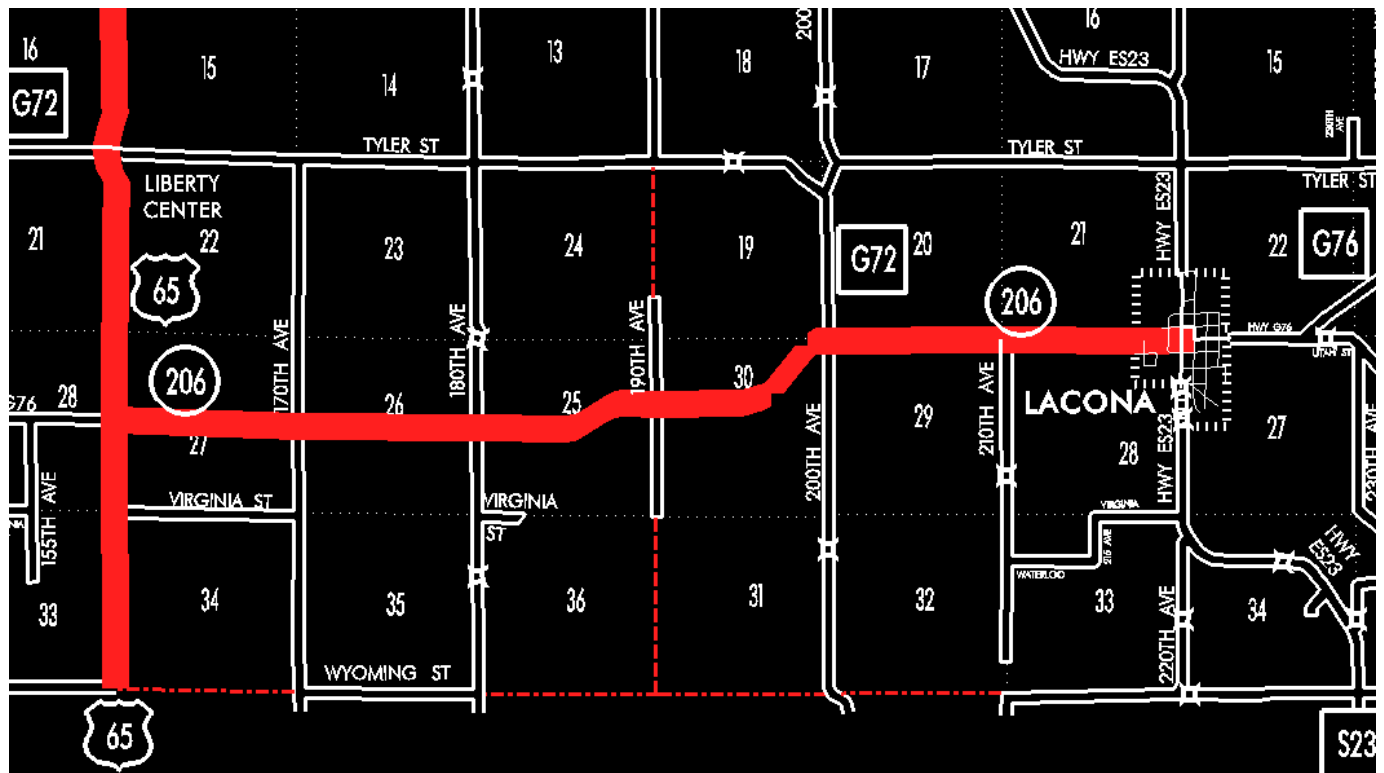
**EFFECTIVE DATE:** 07-01-2003

**ENTERED BY:** Stefani Wonders

**ENTERED DATE:** 08-22-2006

**DISCUSSION/BACKGROUND:**

Senate File 451 transferred Iowa 206 in its entirety, in Warren County, to city and county jurisdiction on July 1, 2003.



**OFFICIAL DESCRIPTION CHANGE**

**COUNTY:** Warren

**ROUTE:** Iowa 206

**STAFF ACTION NUMBER:** S-87-1504

**APPROVAL DATE: 5-13-87**

New Description – Iowa 206 and its extension in Warren County described as follows:

Beginning at a point near the W  $\frac{1}{4}$  Corner Section 27-T74N-R23W (junction U.S. 65); thence east following substantially the center section line of Sections 27 and 26-T74N-R23W to a point near the E  $\frac{1}{4}$  Corner Section 26-T74N-R23W; thence generally northeast through Section 25-T74N-R23W and Section 30-T74N-R22W to a point near the NE Corner Section 30-T74N-R22W; thence east following substantially the section line of Sections 29 and 28-T74N-R22W to the west corporation line of Lacona, connecting with Main Street.

Lacona:

Beginning on Main Street at the west corporation line; thence east on Main Street to Washington Street.

**COMMISSION ORDER**

**DIVISION:** Planning & Research

**COMMISSION ORDER NUMBER:** PR-79-272

**SUBMITTED BY:** C.I. MacGillivray

**MEETING DATE:** 11-2-78

**DISCUSSION/BACKGROUND:**

Iowa 206 begins at US 65 approximately ½ mile south and 6 miles west of Lacona, and travels generally easterly to a point in Lacona, Iowa.

Due to a review of our Primary Road System Records Iowa 206 in Warren County should be deleted and the new description added should be officially included into the Primary System.

**PROPOSAL/ACTION RECOMMENDATION:**

It is recommended that the old description of Iowa 206 in Warren County be deleted and the new description, as referred in the attached detailed description, be included in the Primary Road System effective upon the adoption of this resolution.

Locate Iowa 206 and its extension in Warren County as follows:

Beginning at a point near the W ¼ Corner Section 27-T74N-R23W (junction US 65); thence easterly following substantially the center section line of Sections 27 and 26-T74N-R23W to a point near the E ¼ Corner Section 26-T74N-R23W; thence generally northeasterly through Section 25-T74N-R23W and Section 30-T74N-R22W to a point near the NE Corner Section 30-T74N-R22W; thence easterly following substantially

the section line of Sections 29 and 28-T74N-R22W to the west corporation line of the City of Lacona connecting with an unnamed street.

Lacona:

Beginning on the west corporation line connecting with an unnamed street; thence easterly to Washington Street.

REVISED: 5-13-87

**OFFICIAL DESCRIPTION CHANGE**

**COUNTY:** Warren

**CITY OF:** Lacona

**ROUTE:** Iowa 206

**APPROVAL DATE:** 4-6-60

Commencing on Main Street at the west corporation line; thence easterly on Main Street approximately 1692 feet to Washington Street.

**OFFICIAL DESCRIPTION CHANGE**

**COUNTY:** Warren

**ROUTE:** Iowa 206

**APPROVAL DATE:** 4-14-37

Beginning at a point near the W  $\frac{1}{4}$  Corner Section 27-T74N-R23W; thence east following substantially the quarter section line to a point near the W  $\frac{1}{4}$  Corner Section 30-T74N-R22W; thence in a northeasterly direction to a point near the NE Corner Section 30-T74N-R22W; thence east following

substantially the section line to the west corporation line of the Town of Lacona connecting with Main Street.