

## OFFICIAL DESCRIPTION CHANGE

OFFICE: Transportation Data

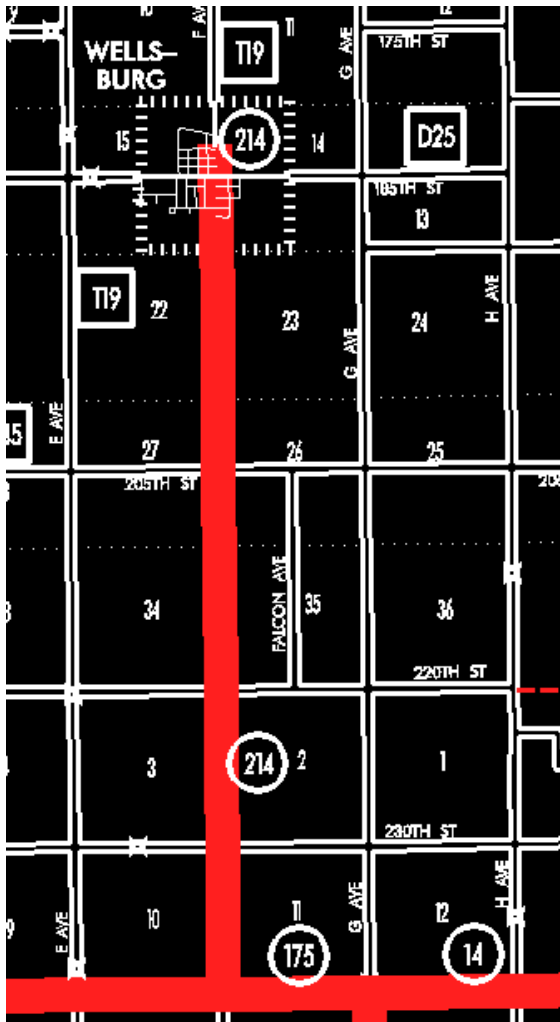
EFFECTIVE DATE: 07-01-2003

ENTERED BY: Stefani Wonders

ENTERED DATE: 08-28-2006

## DISCUSSION/BACKGROUND:

Senate File 451 transferred Iowa 214 in its entirety, in Grundy County, to city and county jurisdiction on July 1, 2003.



**OFFICIAL DESCRIPTION CHANGE**

**COUNTY:** Grundy

**ROUTE:** Iowa 214

**STAFF ACTION NUMBER:** S-87-721

**APPROVAL DATE:** 12-18-86

New Description – Iowa 214 and its extension in Grundy County described as follows:

Beginning at a point near the SW Corner Section 11-T87N-R19W (junction of Iowa 175); thence north following substantially the section line of Sections 11 and 2-T87N-R18W and Sections 35, 26, and 23-T88N-R18W to the south corporation line of Wellsburg connecting with Washington Street.

Wellsburg:

Beginning on Washington Street at the south corporation line; thence north on Washington Street to a point approximately 100 feet north of 1st Street (old Chicago, Rock Island, and Pacific Railroad).

**COMMISSION ORDER**

**DIVISION:** Planning & Research

**COMMISSION ORDER NUMBER:** PR-79-272

**SUBMITTED BY:** C.I. MacGillivray

**MEETING DATE:** 11-2-78

**TITLE:** Iowa 214, Grundy County, Iowa

**DISCUSSION/BACKGROUND:**

Due to a review of our Primary Road System records Iowa 214 in Grundy County, Iowa should be deleted and the new description added should be officially included into the Primary System.

Iowa 214 begins at the junction of Iowa 175, approximately 7 miles west of Grundy Center, and travels in a northerly direction terminating in Wellsburg, Iowa.

**PROPOSAL/ACTION RECOMMENDATION:**

Locate Iowa 214 and its extension in Grundy County as follows:

Beginning at a point near the SW Corner Section 11-T87N-R87W (junction of Iowa 175); thence north following substantially the section line of Sections 11 and 2-T87N-R18W and Sections 35, 26, and 23-T88N-R18W to the south corporation line of the City of Wellsburg connecting with an unnamed street.

Wellsburg:

Beginning at the south corporation line connecting with an unnamed street; thence northerly approximately 3,750 feet.

NOW, THEREFORE: Be it resolved that the Iowa Department of Transportation approve the location of Iowa 214 in Grundy County, Iowa.

NOTE: To be effective upon the adoption of this resolution.

REVISED: 12-18-86

**OFFICIAL DESCRIPTION CHANGE**

**COUNTY:** Grundy

**CITY OF:** Wellsburg

**ROUTE:** Iowa 214

**APPROVAL DATE:** 12-16-59

Commencing on Washington Street at the south corporation line; thence northerly on Washington Street approximately 3749 ft to the Chicago, Rock Island & Pacific Railroad crossing.

REVISED: 4-6-60

**OFFICIAL DESCRIPTION CHANGE**

**COUNTY:** Grundy

**ROUTE:** Iowa 214

**APPROVAL DATE:** 4-14-37

Beginning at a point near the SW Corner Section 11-T87N-R18W; thence north following substantially the section line to the south corporation line of the Town of Wellsburg, connecting with Washington Street.