

**OFFICIAL DESCRIPTION CHANGE**

**OFFICE:** Transportation Data

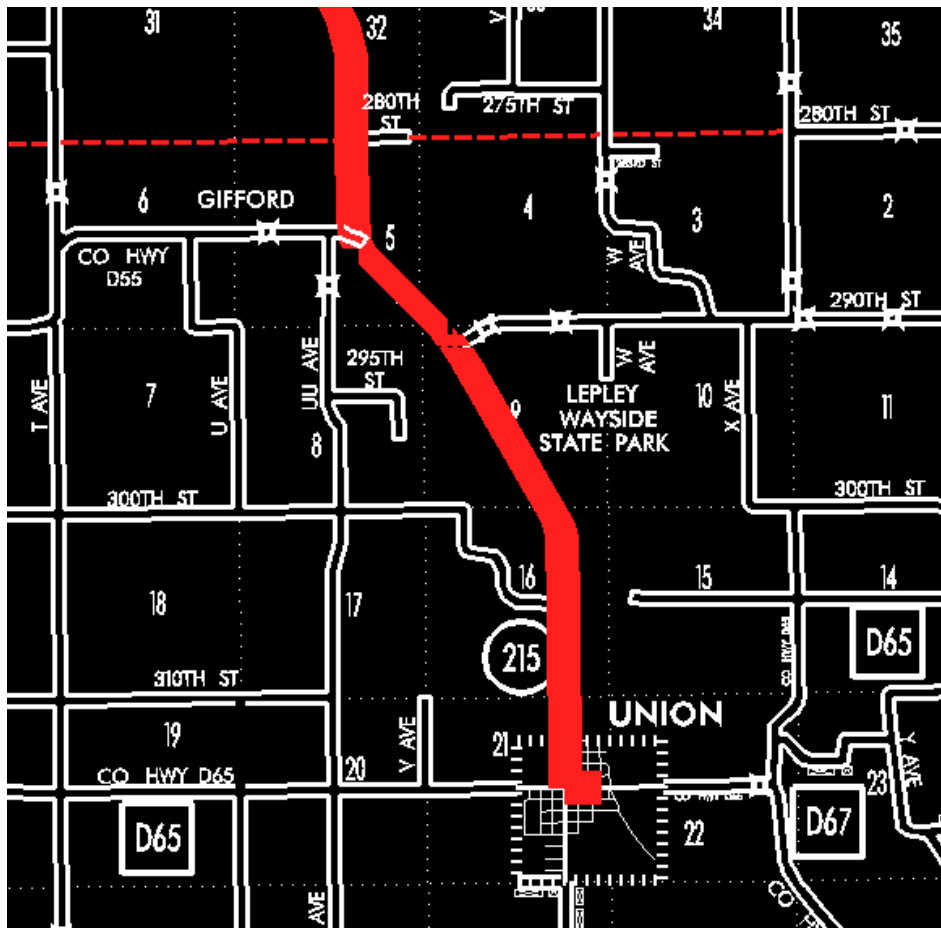
**EFFECTIVE DATE:** 07-01-2003

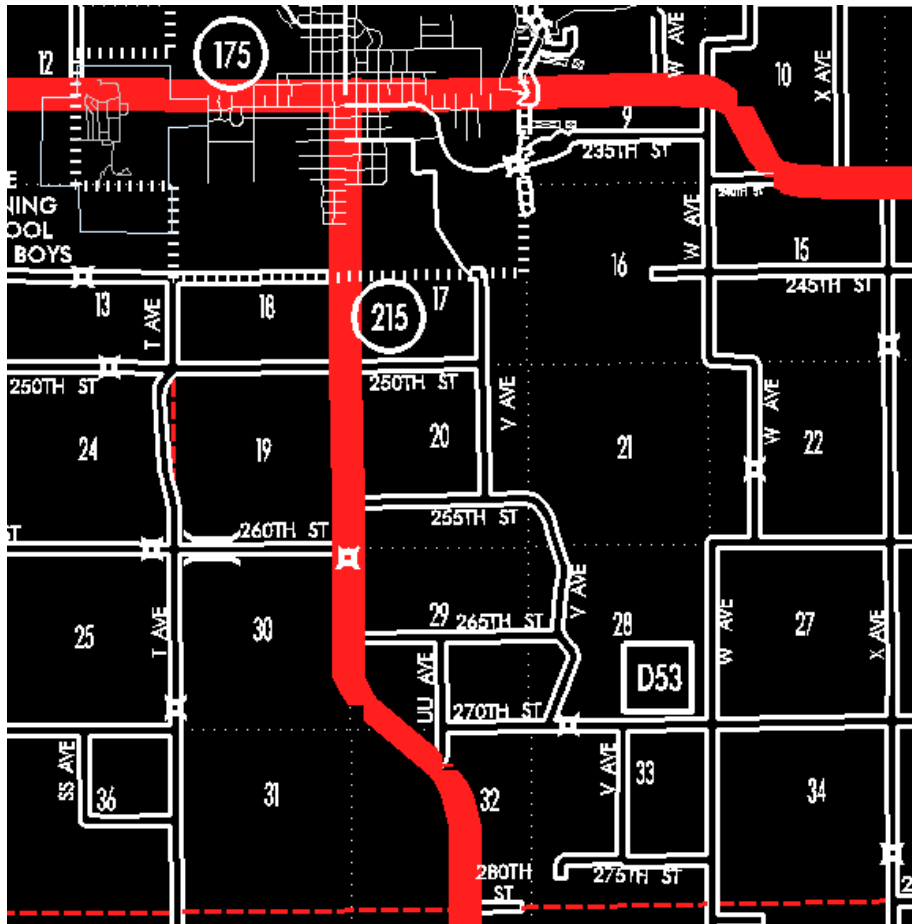
**ENTERED BY:** Stefani Wonders

**ENTERED DATE:** 08-28-2006

**DISCUSSION/BACKGROUND:**

Senate File 451 transferred Iowa 215 in its entirety, in Hardin County, to city and county jurisdiction on July 1, 2003.





## OFFICIAL DESCRIPTION CHANGE

COUNTY: Hardin

ROUTE: Iowa 215

STAFF ACTION NUMBER: S-87-731

APPROVAL DATE: 12-18-86

New Description – Iowa 215 and its extensions in Hardin County described as follows:

Union:

Beginning on Center Street at the intersection of 1st Street; thence west on Center Street to Main Street; thence north on Main Street to the north corporation line.

Beginning at the north corporation line of Union, connecting with Main Street; thence in a northerly direction through Section 21 and 16-T86N-R19W to a point approximately  $\frac{1}{4}$  mile west of the NE Corner Section 16-T86N-R19W; thence in a northwesterly direction along the west side of the Chicago and Northwestern Railway and substantially parallel thereto through Sections 9, 4, and 5-T86N-R19W to a point a short distance southeast of the center of Section 5-T86N-R19W; thence in a northerly direction crossing said Railway and continuing in a northerly direction through Section 5-T86N-R19W and Section 32-T87N-R19W to a point a short distance east of the center of Section 32-T87N-R19W; thence northwesterly through Section 32 and 29-T87N-R19W to a point near the W  $\frac{1}{4}$  Corner Section 29-T87N-R10W; thence north following substantially the section line of Section 29, 20 and 17-T87N-R19W to the south corporation line of Eldora, connecting with Washington Street.

Eldora:

Beginning on Washington Street at the south corporation line; thence north on Washington Street to Edgington Avenue.

**COMMISSION ORDER**

**DIVISION:** Planning & Research

**COMMISSION ORDER NUMBER:** PR-79-272

**SUBMITTED BY:** C.I. MacGillivray

**MEETING DATE:** 11-2-78

**DISCUSSION/BACKGROUND:**

Due to a review of our Primary Highway System records, Iowa 215, in Hardin County should be deleted and the new description added should be officially included into the Primary Road System.

Iowa 215 begins in Union, and travels in a northwesterly and northerly direction terminating at the junction of Iowa 175 in Eldora, Iowa.

**PROPOSAL/ACTION RECOMMENDATION:**

Locate Iowa 215 and its extensions in Hardin County as follows:

Union:

Beginning on an unnamed street at First Street; thence westerly and northerly to the north corporation line connecting with an unnamed street (junction Iowa 175).

Beginning at the north corporation line of the City of Union, connecting with an unnamed street; thence in a northerly direction through Section 21 and 16--T86N-R19W to a point approximately  $\frac{1}{4}$  mile west of the NE Corner Section 16-T86N-R19W; thence in a northwesterly direction along the west side of the Chicago and Northwestern Railway and substantially parallel thereto through Sections 9, 4, and 5-T86N-R19W to a point a short distance southeast of the center of Section 5-T86N-R19W; thence northerly crossing said Railway and continuing in a northerly direction through Section 5-T86N-R19W and Section 32-T87N-R19W to a point a short distance east of the center of Section 32-T87N-R19W; thence northwesterly through Section 32 and 29-T87N-R19W to a point near the W  $\frac{1}{4}$  Corner Section 29-T87N-R10W; thence northerly following substantially the section line of Section 29, 20 and 17-T87N-R19W to the south corporation line of the City of Eldora, connecting with an unnamed street.

Eldora:

Beginning at the south corporation line, connecting with an unnamed street; thence northerly to Edgington Avenue (junction Iowa 175).

NOW, THEREFORE: Be it resolved that the Iowa Department of Transportation approve the location of Iowa 215 in Hardin County, Iowa.

NOTE: To become effective upon adoption of this resolution.

REVISED: 12-18-86

**OFFICIAL DESCRIPTION CHANGE**

**COUNTY:** Hardin

**CITY OF:** Union

**ROUTE:** Iowa 215

**APPROVAL DATE:** 9-10-40

Commencing on Main Street at the north corporation line; thence south on Main Street to Center Street; thence east on Center Street to First Street.

REVISED: 11-2-78

**OFFICIAL DESCRIPTION CHANGE**

**COUNTY:** Hardin

**ROUTE:** Iowa 215

**APPROVAL DATE:** 4-14-37

Beginning on the north corporation line of the Town of Union, connecting with Main Street; thence in a northerly direction through Section 16-T86N-R19W to a point approximately  $\frac{1}{4}$  mile west of the NE Corner of Section 16-T86N-R19W; thence in a northwesterly direction along the west side of the Minneapolis and St. Louis Railroad and substantially parallel thereto through Sections 9, 4, and 5-T86N-R19W to a point a short distance southeast of the center of Section 5-T86N-R19W; thence northerly crossing said railroad and continuing in a northerly direction to a point a short distance east of the center of Section 32-T87N-R19W; thence northwesterly to a point near the W  $\frac{1}{4}$  Corner of Section 29-T87N-R19W; thence north following substantially the section line to the south corporation line of the City of Eldora, connecting with Washington Street.

REVISED: 11-4-74



**OFFICIAL DESCRIPTION CHANGE**

**COUNTY:** Hardin

**CITY OF:** Eldora

**ROUTE:** Iowa 215

**APPROVAL DATE:** 2-5-36

Commencing on Washington Street at the south corporation line; thence north on Washington Street to Edgington Avenue.

REVISED: 4-14-37