

OFFICIAL DESCRIPTION CHANGE

OFFICE: Transportation Data

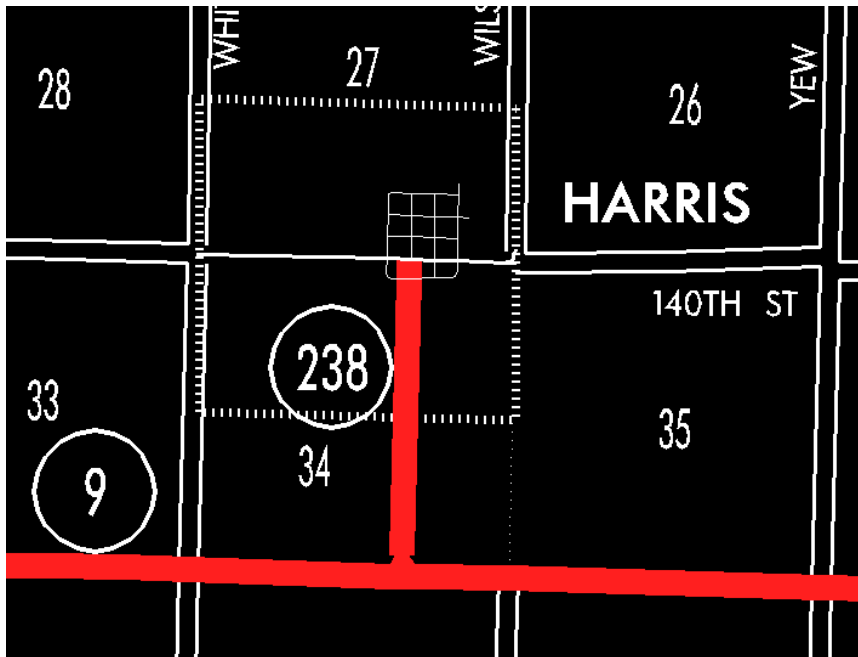
EFFECTIVE DATE: 07-01-2003

ENTERED BY: Stefani Wonders

ENTERED DATE: 08-31-2006

DISCUSSION/BACKGROUND:

Senate File 451 transferred Iowa 238 in its entirety, in Osceola County, to city and county jurisdiction on July 1, 2003.



STAFF ACTION

OFFICE: Transportation Inventory

STAFF ACTION NUMBER: S-88-275

SUBMITTED BY: Patrick R. Cain

SUBMITTAL DATE: 8-26-87

DISCUSSION/BACKGROUND:

A State Functional Classification Review Board hearing between the Iowa Department of Transportation and Osceola County and the City of Harris transferred jurisdiction of Iowa 238 to local authority upon completion of necessary repairs. Notice of completion of repairs was given to Osceola County and the City of Harris effective April 10, 1981.

Chapter 306.44 of the Iowa Code states that "transfers not executed as of April 1, 1981 shall be void unless mutually agreed upon by the parties involved". Since no mutual agreement has been worked out with Osceola County and the City of Harris our Legal Department has ruled the Iowa Department of Transportation has jurisdiction of Ia. 238. The official Description of Iowa 238 should be included in the Primary Road System to reflect this ruling.

Iowa 238 begins at a junction with Iowa 9, approximately one-half mile south of Harris and travels north to Harris.

PROPOSAL/ACTION RECOMMENDATION:

It is recommended to approve adding the description of Iowa 238 in Osceola County to the Primary Road System.

New Description – Iowa 238 and its' extension in Osceola County described as follows:

Beginning at a point (junction Iowa 9) approximately 1320 feet west of the SE Corner Section 34-T100N-R39W; thence northwesterly and northerly through Section 34-T100N-R39W to the south corporation line of Harris, connecting with Main Street.

Harris:

Beginning on Main Street at the south corporation line; thence northerly on Main Street 2679 feet.

COMMISSION ORDER

DIVISION: Planning & Research

COMMISSION ORDER NUMBER: PR-82-25

SUBMITTED BY: Patrick R. Cain

MEETING DATE: 7-7-81

DISCUSSION/BACKGROUND:

Iowa 238 begins at a junction with Iowa 9 approximately one-half mile south of the City of Harris, and proceeds north to the City of Harris.

A State Functional Classification Review Board hearing between the Iowa Department of Transportation (transferring jurisdiction) and Osceola County (receiving jurisdiction) transferred that portion of Iowa 238 from Iowa 9 near the S ¼ Corner SE ¼ Section 34-T100N-R39W north to the south corporation line of the City of Harris to county jurisdiction on April 10, 1981.

A State Functional Classification Review Board hearing between the Iowa Department of Transportation (transferring jurisdiction) and the City of Harris (receiving jurisdiction), transferred that portion of Iowa 238 from the south corporation line of the City of Harris north to Osceola Avenue to city jurisdiction on April 10, 1981.

PROPOSAL/ACTION RECOMMENDATION:

It is recommended the commission approve deleting the present description of Iowa 238 in Osceola County from the primary road system.

Remove Iowa 238 and its extension in Osceola County as follows:

Beginning at a point (junction Iowa 9) approximately 1320 feet west of the SE Corner Section 34-T100N-R39W; thence curving in a northwesterly and northerly direction through Section 34-T100N-R39W to the south corporation line of the City of Harris, connecting with an unnamed street.

Harris:

Beginning on the south corporation line connecting with an unnamed street; thence northerly on said unnamed street 2679 feet.

REVISED: 8-28-87

COMMISSION ORDER

DIVISION: Planning & Research

COMMISSION ORDER NUMBER: PR-79-272

SUBMITTED BY: C.I. MacGillivray

MEETING DATE: 11-2-78

DISCUSSION/BACKGROUND:

Due to a review of our Primary Road System Records, Iowa 238 in Osceola County should be deleted and the new description added should be officially included into the Primary System.

Iowa 233 begins at a junction with Iowa 9, 1 mile south of Harris, and travels northwesterly and northerly to Harris, Iowa.

PROPOSAL/ACTION RECOMMENDATION:

Locate Iowa 238 and its extension in Osceola County as follows:

Beginning at a point (junction Iowa 9) approximately 1320 feet west of the SE Corner Section 34-T100N-R39W; thence curving in a northwesterly and northerly direction through Section 34-T100N-R39W to the south corporation line of the City of Harris, connecting with an unnamed street.

Harris:

Beginning on the south corporation line connecting with an unnamed street; thence northerly on said unnamed street 2679 feet.

NOW, THEREFORE: Be it resolved that the Iowa Department of Transportation approve the location of Iowa 233 in Osceola County, Iowa.

NOTE: To become effective upon the adoption of this resolution.

REVISED: 7 -7-81

OFFICIAL DESCRIPTION CHANGE

COUNTY: Osceola

ROUTE: Iowa 238

APPROVAL DATE: 4-14-37

Beginning at a point approximately 700 feet east of the S ¼ Corner Section 34-T100N-R39W; thence curving in a northeasterly direction to a point approximately 930 feet east and 200 feet north of the S ¼ Corner Section 34-T100N-R39W; thence north to the south corporation line of the Town of Harris and connecting with Main Street.

REVISED: 11-2-78

OFFICIAL DESCRIPTION CHANGE

COUNTY: Osceola

APPROVAL DATE: 4-14-37

CONNECTING CURVES

Junction of Iowa 9 and Iowa 238.

Beginning at a point approximately 900 feet east and 400 feet north of the S $\frac{1}{4}$ Corner Section 34-T100N-R39W; thence curving in a southeasterly direction to a point approximately $\frac{1}{4}$ mile east of the S $\frac{1}{4}$ Corner Section 34-T100N-R39W.

OFFICIAL DESCRIPTION CHANGE

COUNTY: Osceola

CITY OF: Harris

ROUTE: Iowa 238

APPROVAL DATE: 2-5-36

Commencing on Main Street at the south corporation line; thence northerly on Main Street to Osceola Street.

REVISED: 11-2-78