

**OFFICIAL DESCRIPTION CHANGE**

**OFFICE:** Transportation Data

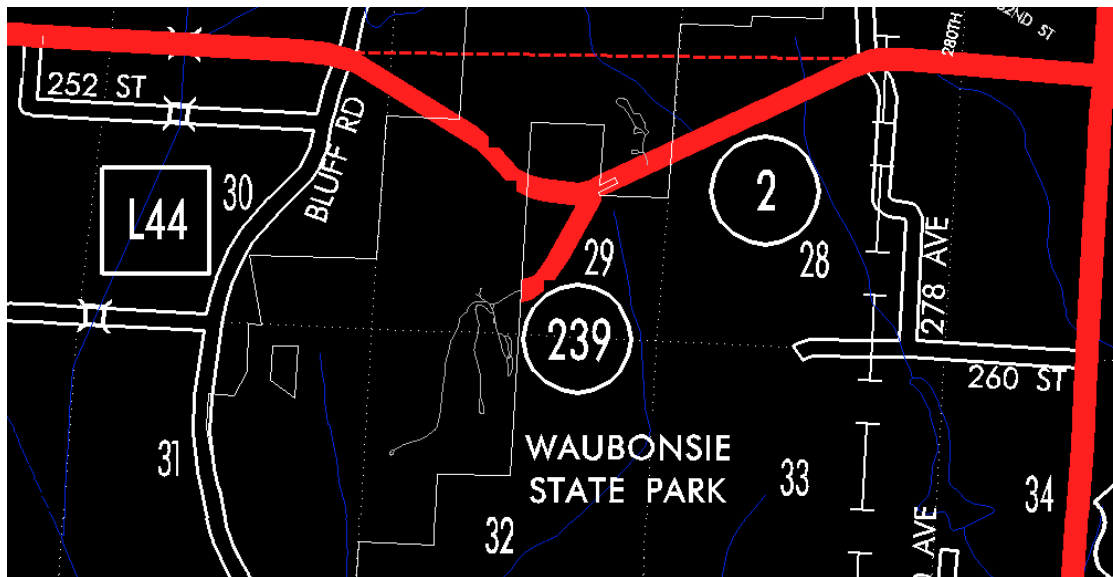
**EFFECTIVE DATE:** 07-01-2003

**ENTERED BY:** Stefani Wonders

**ENTERED DATE:** 08-21-2006

**DISCUSSION/BACKGROUND:**

Senate File 451 transferred Iowa 239 in its entirety, in Fremont County, to county jurisdiction on July 1, 2003.



**COMMISSION ORDER**

**DIVISION:** Planning & Research

**COMMISSION ORDER NUMBER:** PR-79-272

**SUBMITTED BY:** C. I. MacGillivray

**MEETING DATE:** 11-2-78

**DISCUSSION/BACKGROUND:**

Due to a review of our Primary Road System records Iowa 239 in Fremont County should be deleted and the new description added should be officially included into the Primary System.

**PROPOSAL/ACTION RECOMMENDATION:**

It is recommended that the old description of the Iowa 239 in Fremont County be deleted and the new description, as referred in the attached detailed description, be included in the Primary Road System effective upon the adoption of this resolution.

Locate Iowa 239 in Fremont County as follows:

Beginning at the entrance to Waubonsie State Park; thence in a northeasterly direction through Section 29-T68N-R42W to a point approximately  $\frac{1}{4}$  mile west of the E  $\frac{1}{4}$  Corner of Section 29-T68N-R42W (junction Iowa 2).

**OFFICIAL DESCRIPTION CHANGE**

**COUNTY:** Fremont

**ROUTE:** Iowa 239

**APPROVAL DATE:** 4-14-37

Beginning at the entrance to Waubonsie State Park; thence in a northeasterly direction to a point approximately  $\frac{1}{4}$  mile west of the E  $\frac{1}{4}$  Corner of Section 29-T68N-R42W.

**REVISED:** 11-2-78